

## PROGRAM ELEMENTS

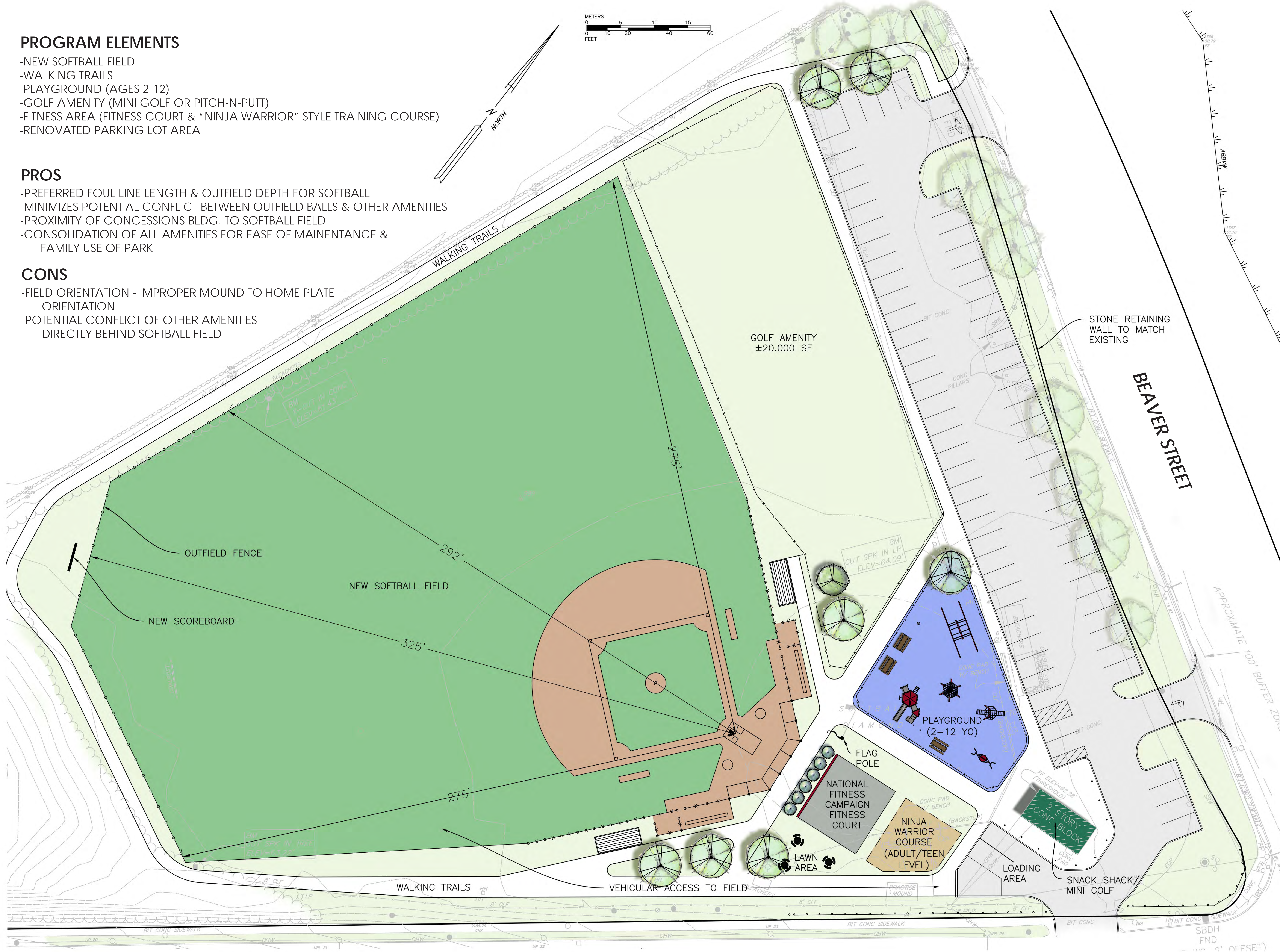
- NEW SOFTBALL FIELD
- WALKING TRAILS
- PLAYGROUND (AGES 2-12)
- GOLF AMENITY (MINI GOLF OR PITCH-N-PUTT)
- FITNESS AREA (FITNESS COURT & "NINJA WARRIOR" STYLE TRAINING COURSE)
- RENOVATED PARKING LOT AREA

## PROS

- PREFERRED FOUL LINE LENGTH & OUTFIELD DEPTH FOR SOFTBALL
- MINIMIZES POTENTIAL CONFLICT BETWEEN OUTFIELD BALLS & OTHER AMENITIES
- PROXIMITY OF CONCESSIONS BLDG. TO SOFTBALL FIELD
- CONSOLIDATION OF ALL AMENITIES FOR EASE OF MAINTENANCE & FAMILY USE OF PARK

## CONS

- FIELD ORIENTATION - IMPROPER MOUND TO HOME PLATE ORIENTATION
- POTENTIAL CONFLICT OF OTHER AMENITIES DIRECTLY BEHIND SOFTBALL FIELD



# Cornelia Warren Field & Park

## Detailed Conceptual Site Improvements Plan

City of Waltham Recreation Department

**BEALS + THOMAS**



DATE: 11/14/2018  
BTT FILE NO: 299200P005A-002