

# Community Fact Sheet

Waltham, Massachusetts

Updated 03/07/14

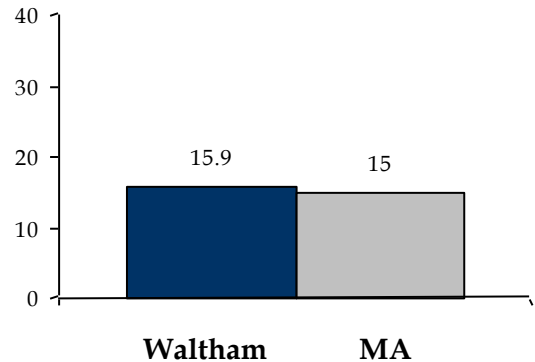
## Cigarette Smoking

An estimated 9,502 smokers live in Waltham (15.9% of adults, age 18+).

The adult smoking rate is 6% higher in Waltham than statewide (15.9% in Waltham compared to 15% statewide).

The rate of smoking during pregnancy in Waltham is 63% lower than statewide (2.6% in Waltham compared to 7% statewide).

% of Adult Smokers



## QuitWorks

From July 2009 to June 2013, 125 smokers enrolled in QuitWorks, a program for clinicians to refer their patients to the Massachusetts Smokers' Helpline. In addition, 176 people from Waltham called and completed an intake with the Massachusetts Smokers' Helpline to quit smoking.

## Health Effects of Smoking

Lung cancer incidence is 9% higher among males in Waltham compared to the state of Massachusetts. The age-adjusted lung cancer incidence (per 100,000) for males is 89.6 in Waltham compared to 82.2 in Massachusetts.

Lung cancer incidence is about the same among females in Waltham compared to the state of Massachusetts. The age-adjusted lung cancer incidence (per 100,000) for females is 62.8 in Waltham compared to 65.5 in Massachusetts.

Mortality from lung cancer is about the same in Waltham compared to Massachusetts.



Massachusetts Department of Public Health  
Tobacco Cessation and Prevention Program  
(617) 624-5900 [www.mass.gov/dph/mtcp](http://www.mass.gov/dph/mtcp)

Make smoking history.



# Community Fact Sheet

---

Waltham, Massachusetts

Updated 03/07/14

## Data Sources

Smoking figures are small area estimates based on data from the 2009 Behavioral Risk Factor Surveillance System, Massachusetts Department of Public Health.

Figures on smoking during pregnancy are based on 2006 to 2010 Births (Vital Records), Massachusetts Department of Public Health.

The number of completed screeners from the QuitWorks program and calls to the Massachusetts Smokers' Helpline is based on data collected by the Massachusetts Tobacco Cessation and Prevention Program from fiscal years 2009 to 2013.

Rates of lung cancer incidence are based on age-adjusted rates from 2005 to 2009 Cancer Registry maintained by the Massachusetts Department of Public Health.

Figures on lung cancer mortality are based on comparability modified age-adjusted rates for 2006 to 2010 (Vital Records), Massachusetts Department of Public Health.



Massachusetts Department of Public Health  
Tobacco Cessation and Prevention Program  
(617) 624-5900 [www.mass.gov/dph/mtcp](http://www.mass.gov/dph/mtcp)



**Make smoking history.**