

THE CITY OF WALTHAM
MASSACHUSETTS

PURCHASING DEPARTMENT

**WATER MAIN IMPROVEMENTS DESIGN,
BEAR HILL ROAD & SECOND AVENUE**

ADDENDUM NO. 2

Oct. 19, 2015

CHANGES, CORRECTIONS AND CLARIFICATIONS

The attention of bidders submitting proposals for the above subject project is called to the following addendum to the specifications. The items set forth herein, whether of omission, addition, substitution or clarification are all to be included in and form a part of the proposal submitted.

THE NUMBER OF THIS ADDENDUM (NO. 1) MUST BE RECOGNIZED AS RECEIVED BY YOUR COMPANY IN YOUR COVER LETTER

ITEM 1: DRAWINGS

See attached drawings of known existing conditions

ITEM 2: DELETE AND ADD

1. On Page 4 Section III Bidding Paragraph 2 - DELIVERY TO THE CITY **DELETE** the line: *"The 90% preliminary design shall be submitted with 40 day from the Notice to Proceed and the final design shall be submitted within 60 day from the notice to proceed"*. **ADD** in its place: *"The 50% preliminary design shall be submitted with 40 days from the Notice to Proceed and the final design (100%) shall be submitted within 40 days from the notice to proceed"*.
2. **DELETE** The PRICE SHEET Page and **ADD** the revised one attached to this addenda

End of Addendum 2

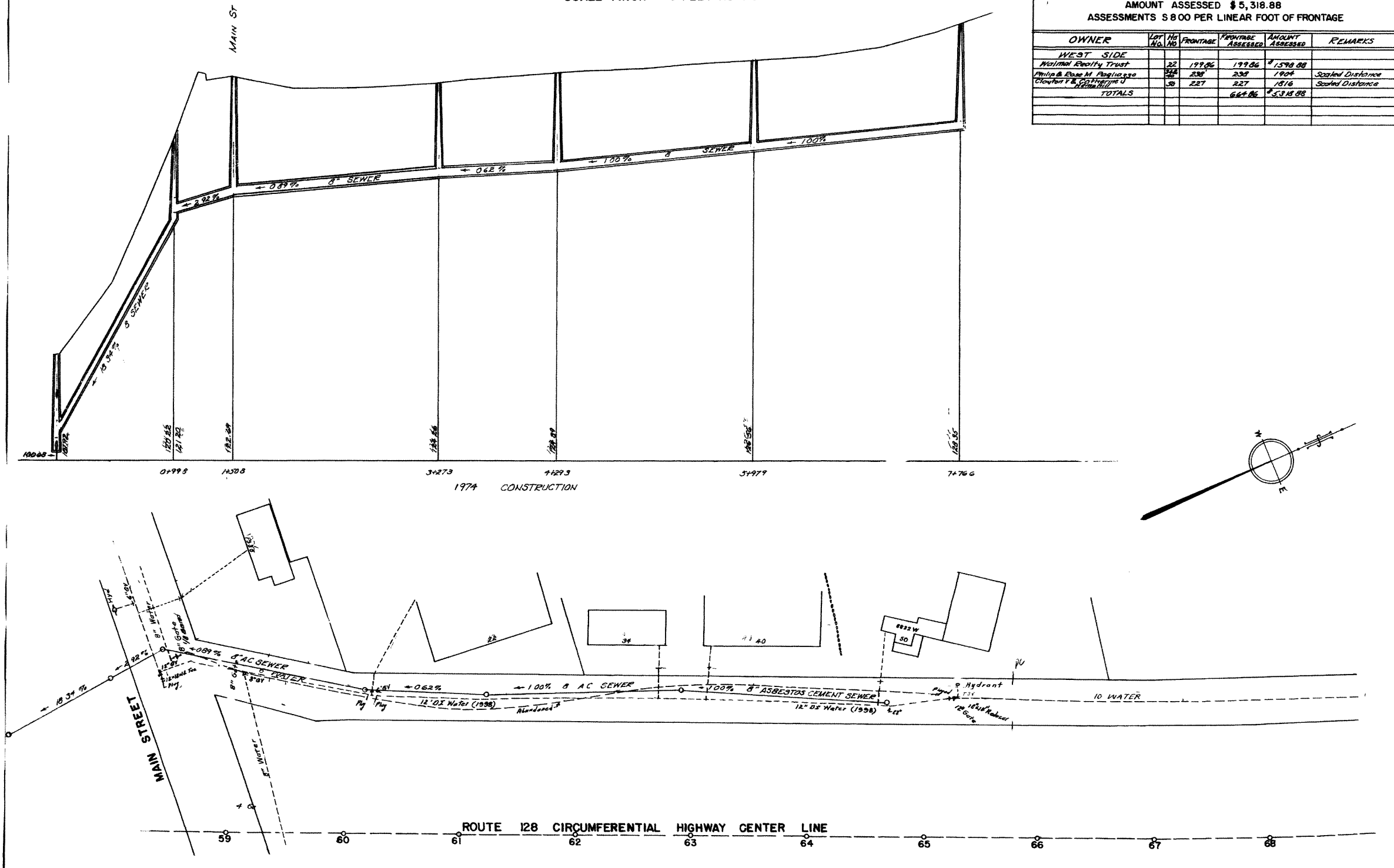
Bear Hill Road
Water & Sewer
22 - # 50

BEAR HILL ROAD

SCALE: 1 INCH = 40 FEET HOR. & 4 FEET VERT.

TABLE OF ASSESSMENTS FOR 1974 CONSTRUCTION
CONSTRUCTION ORDER NO 23616 DATE OF APPROVAL APR. 23, 1974
ASSESSMENT ORDER NO 23796 DATE OF APPROVAL FEB. 11, 1975
TOTAL COST \$20,911.12
AMOUNT ASSESSED \$5,318.88
ASSESSMENTS \$ 8.00 PER LINEAR FOOT OF FRONTAGE

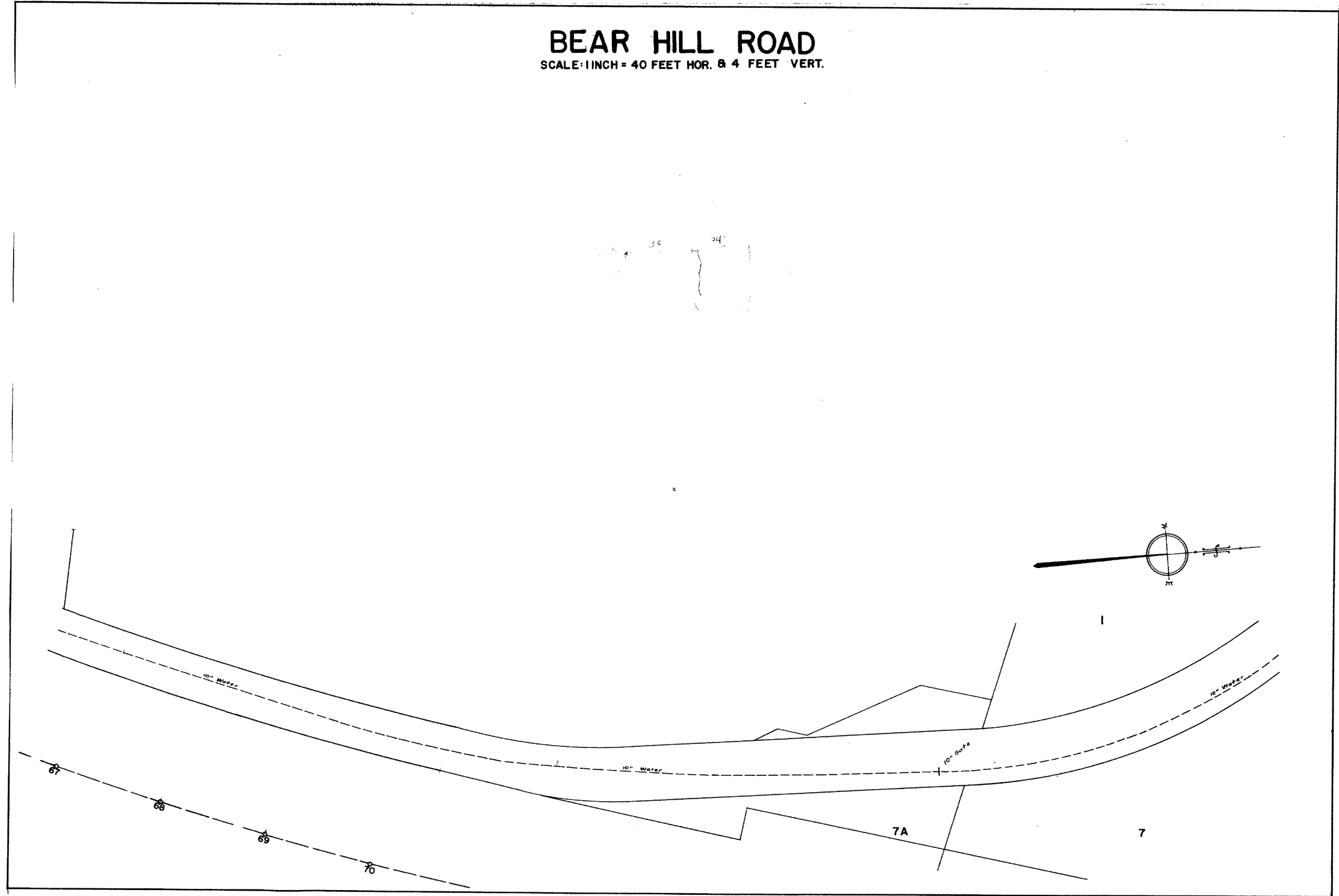
OWNER	LOT NO.	FRONTAGE	FRONTAGE ASSESSED	AMOUNT ASSESSED	REMARKS
WEST SIDE					
Waltham Realty Trust	22	197.86	197.86	\$1,578.88	
Winn & Co. M. Angell & Co.	23	230	230	1,840	Scaled Distance
Charles F. & Catherine J. Hennessey	30	227	227	1,816	Scaled Distance
TOTALS			654.86	\$5,318.88	



Bear Hill Road
Water & Sewer
-

BEAR HILL ROAD

SCALE: 1 INCH = 40 FEET HOR. & 4 FEET VERT.

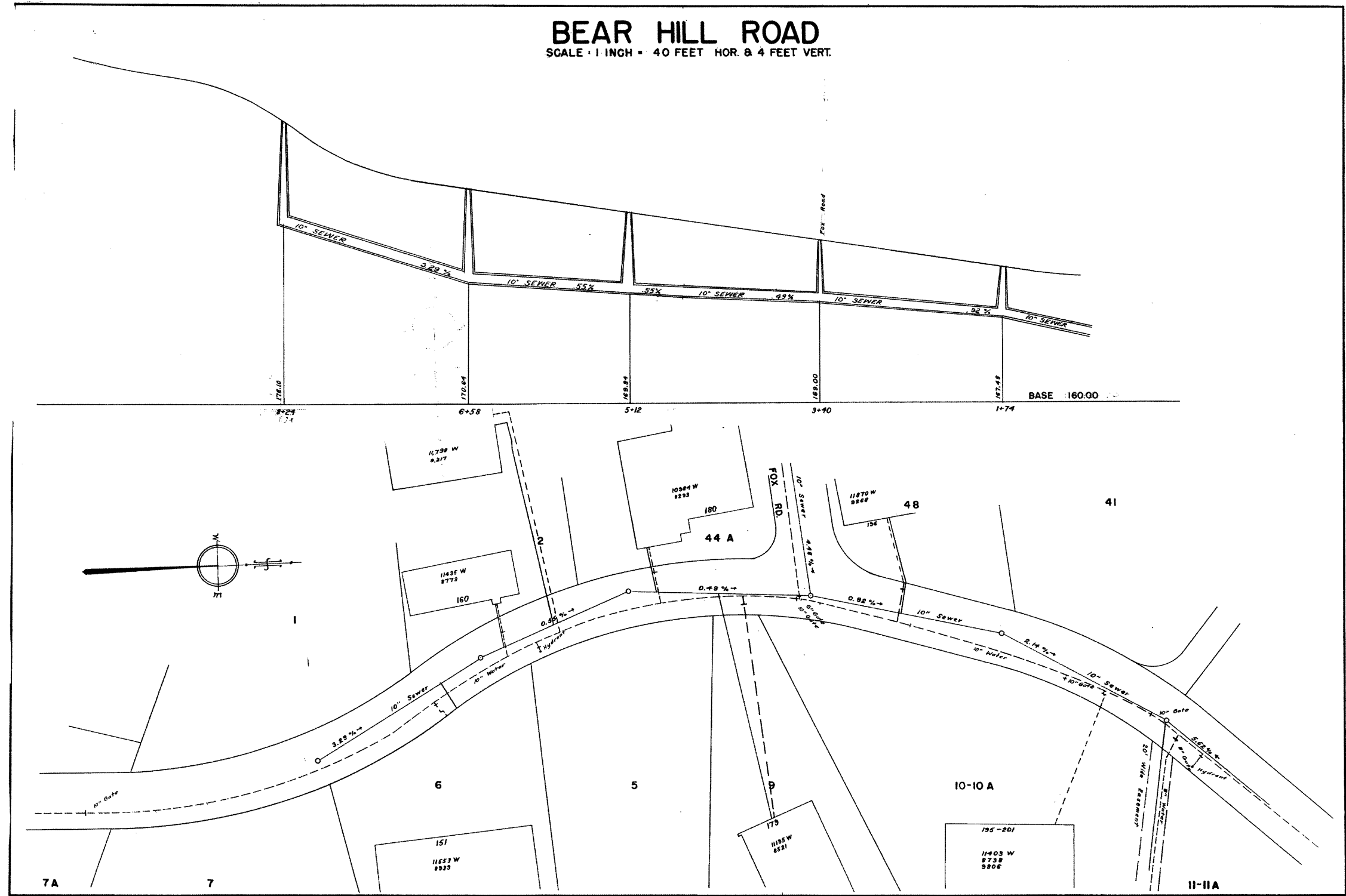


BEAR HILL ROAD B

Bear Hill Road
Water & Sewer
151 - # 201

BEAR HILL ROAD

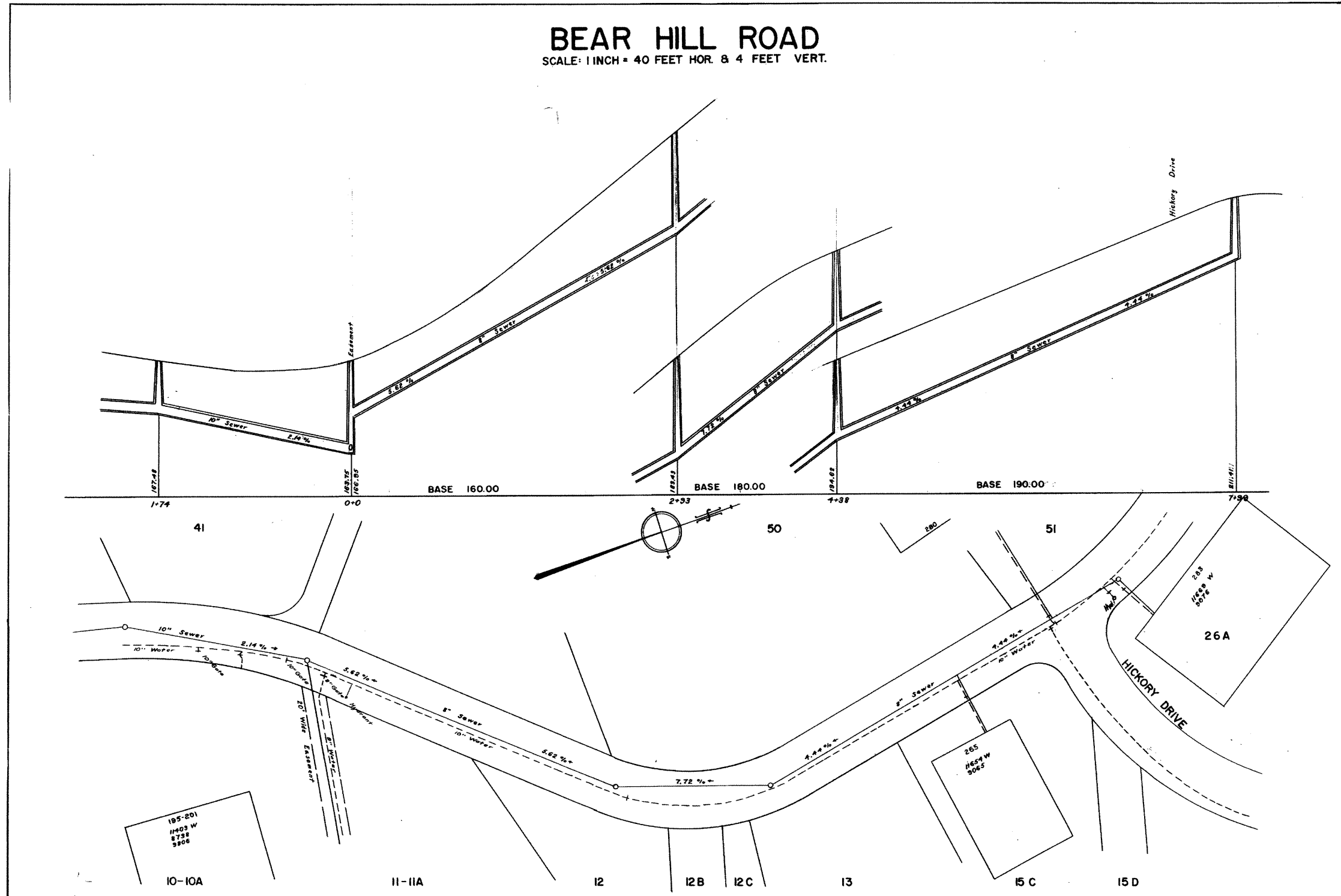
SCALE: 1 INCH = 40 FEET HOR. & 4 FEET VERT.



Bear Hill Road
Water & Sewer
195 - # 283

BEAR HILL ROAD

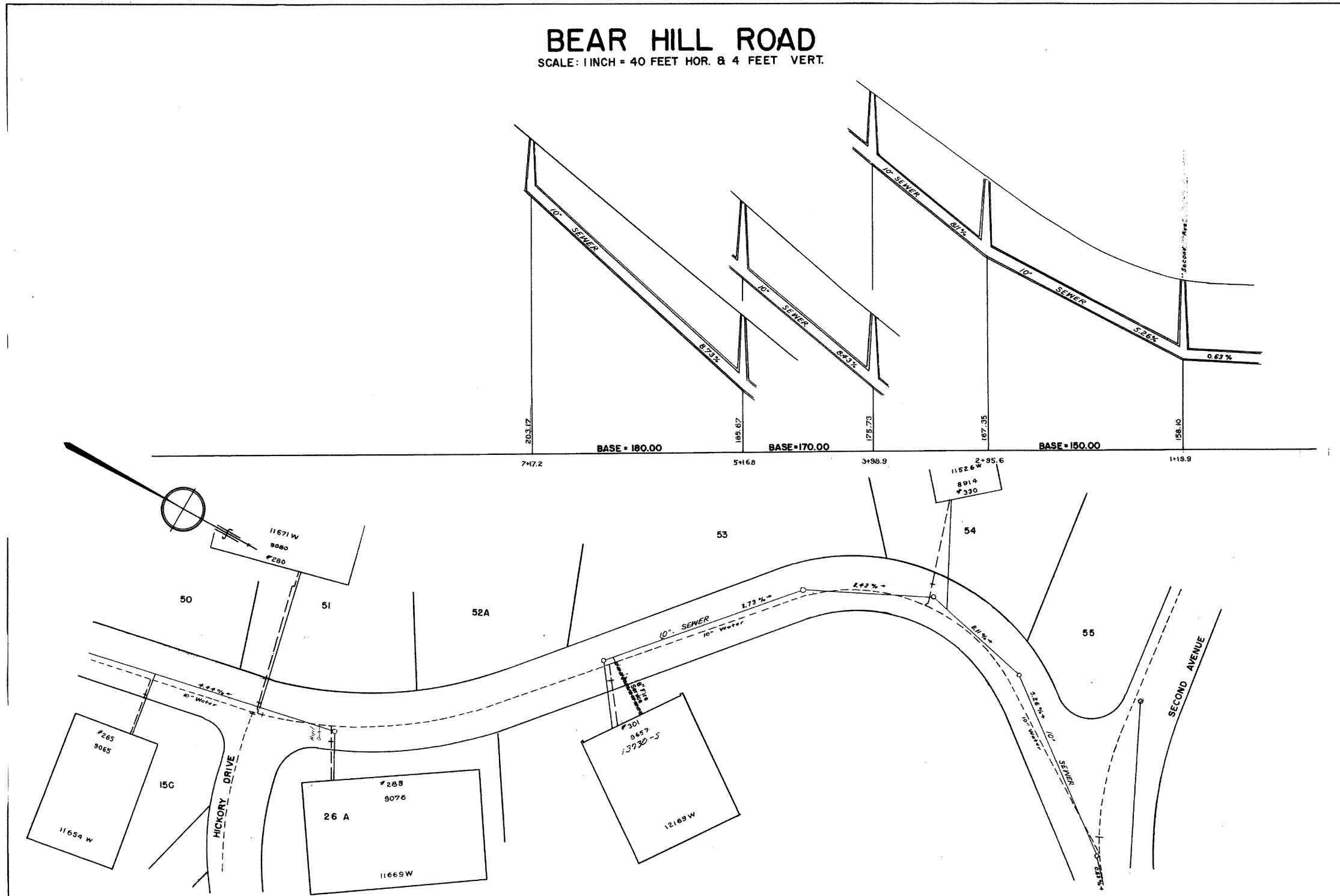
SCALE: 1 INCH = 40 FEET HOR. & 4 FEET VERT.



Bear Hill Road
Water & Sewer
265 - # 330

BEAR HILL ROAD

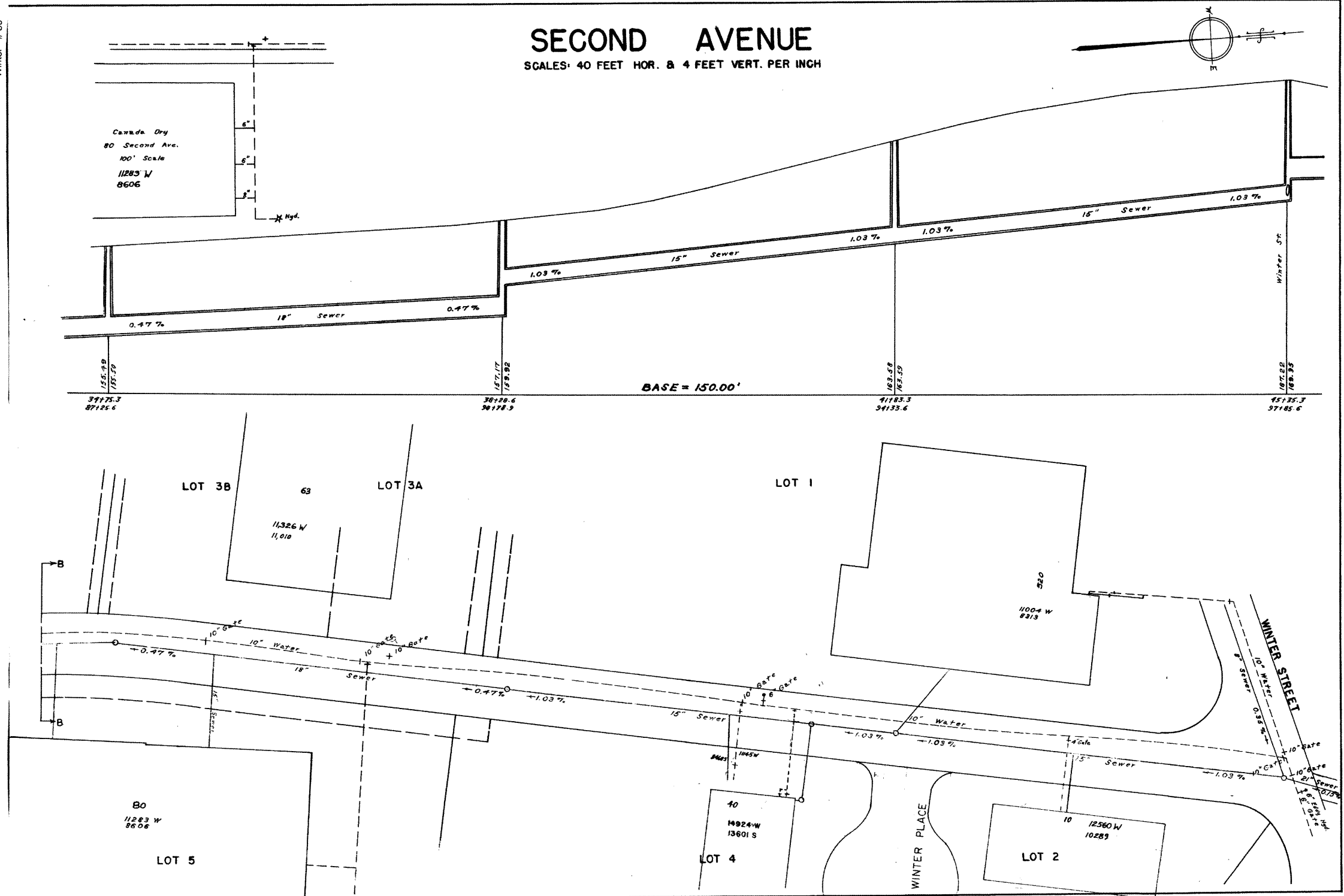
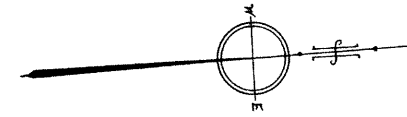
SCALE: 1 INCH = 40 FEET HOR. & 4 FEET VERT.



Second Ave. (A)
Water & Sewer
Winter - # 80

SECOND AVENUE

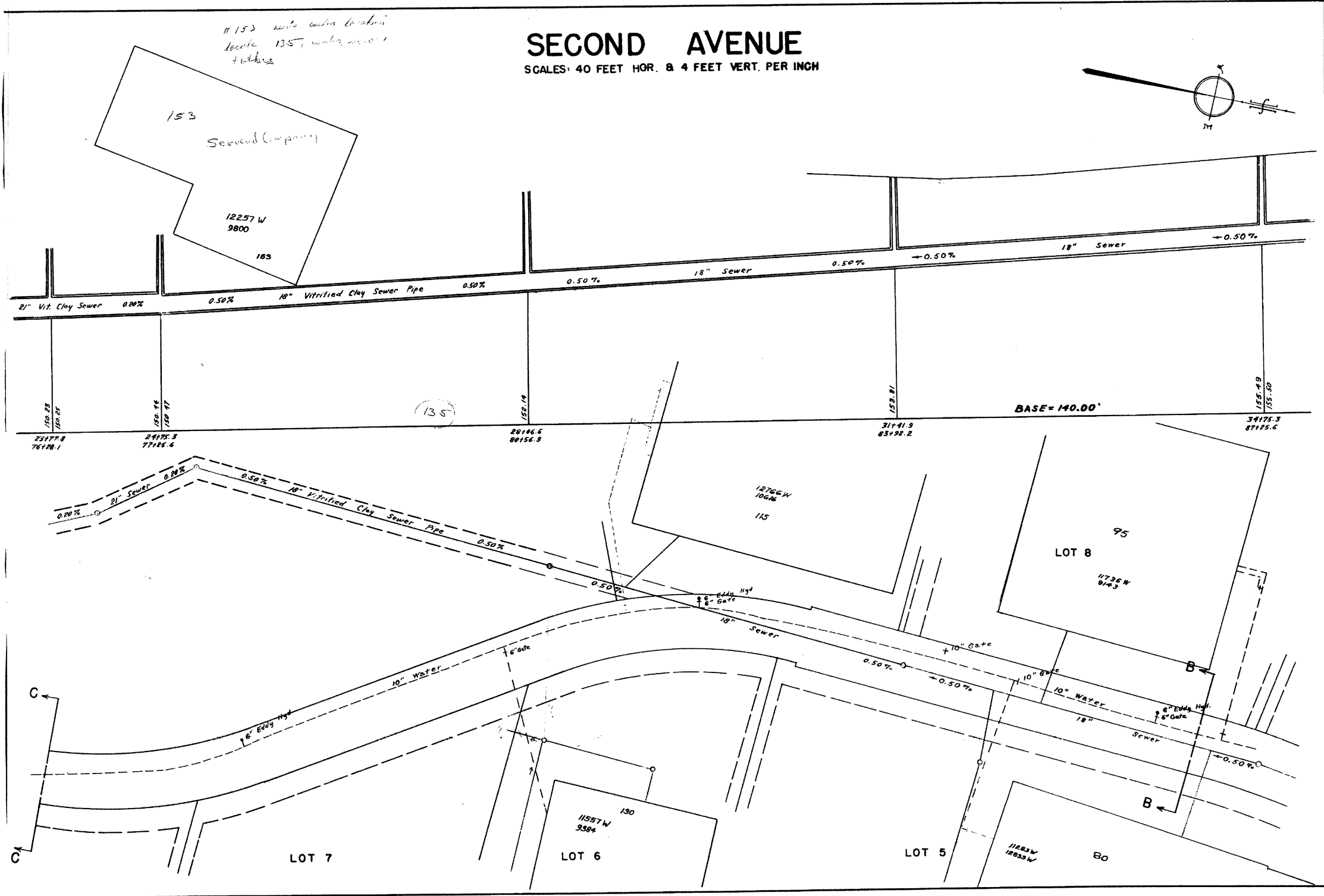
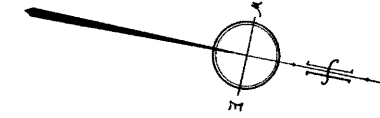
SCALES: 40 FEET HOR. & 4 FEET VERT. PER INCH



Second Ave. (B)
Water & Sewer
80-130

SECOND AVENUE

SCALES: 40 FEET HOR. & 4 FEET VERT. PER INCH

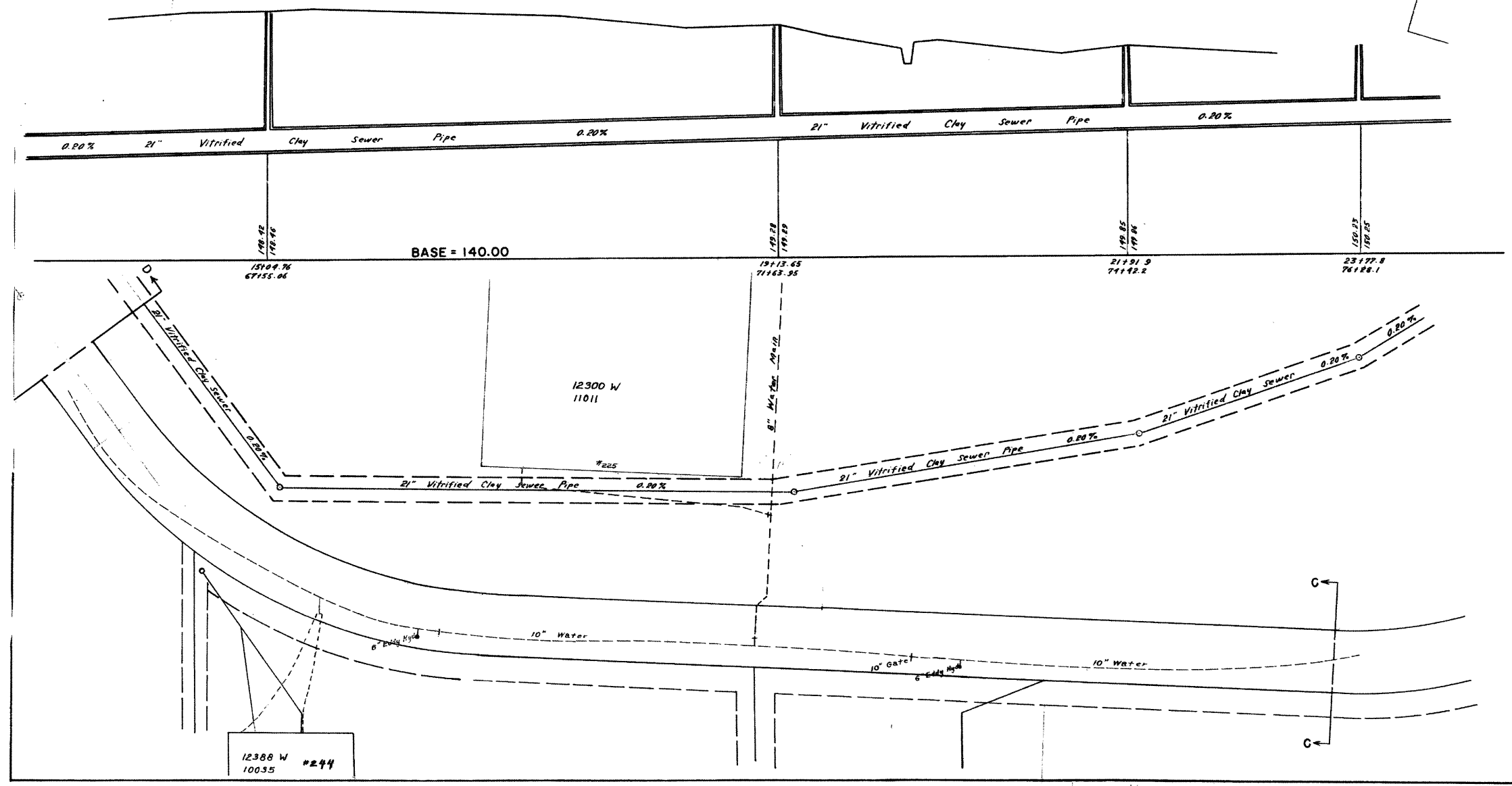
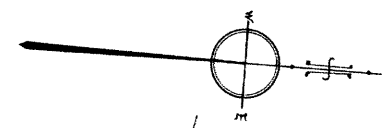


Second Ave. (c)
Water & Sewer
225, # 244

Locations

SECOND AVENUE

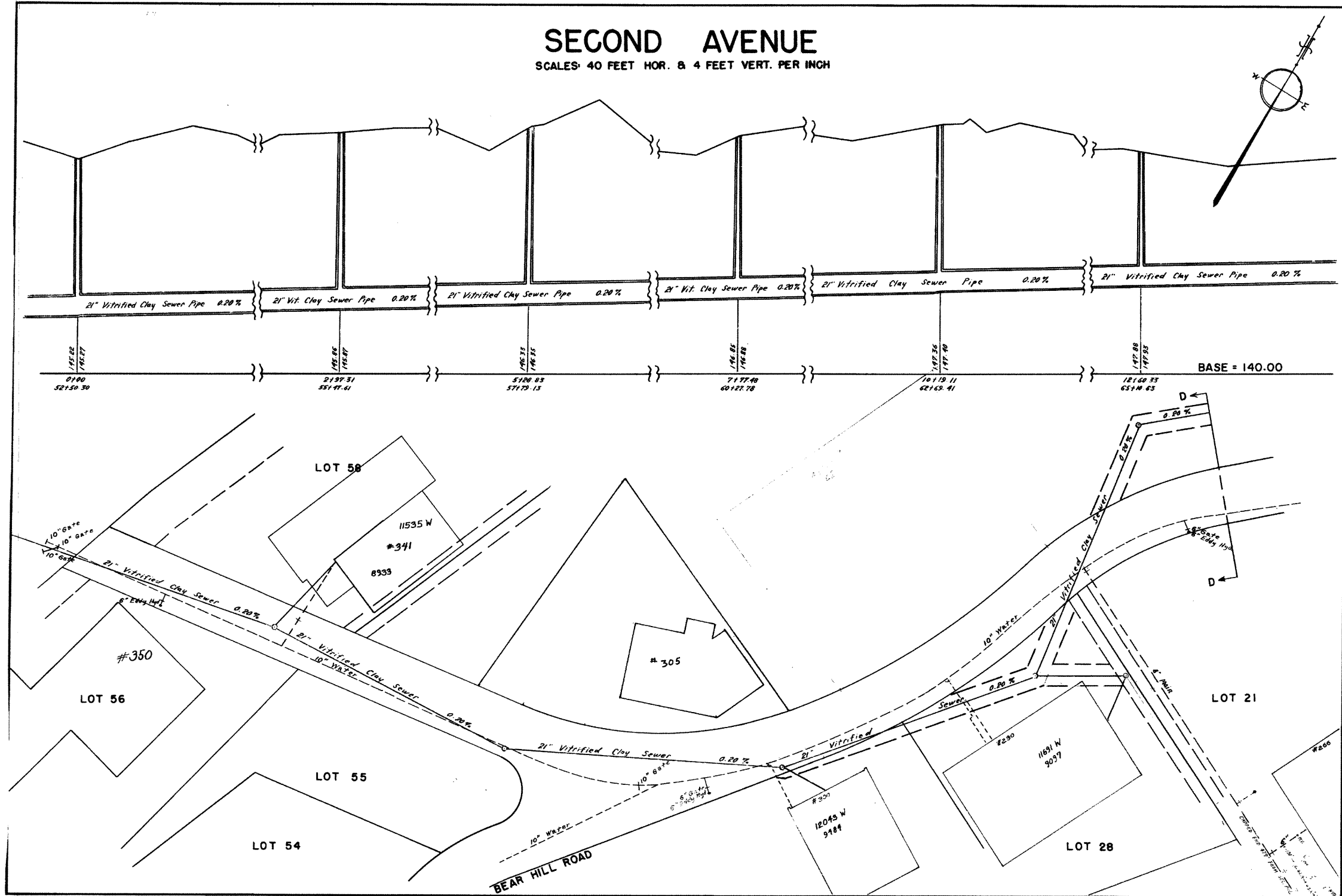
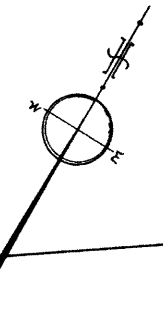
SCALES: 40 FEET HOR. & 4 FEET VERT. PER INCH

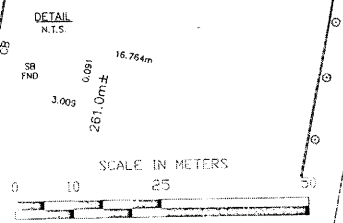
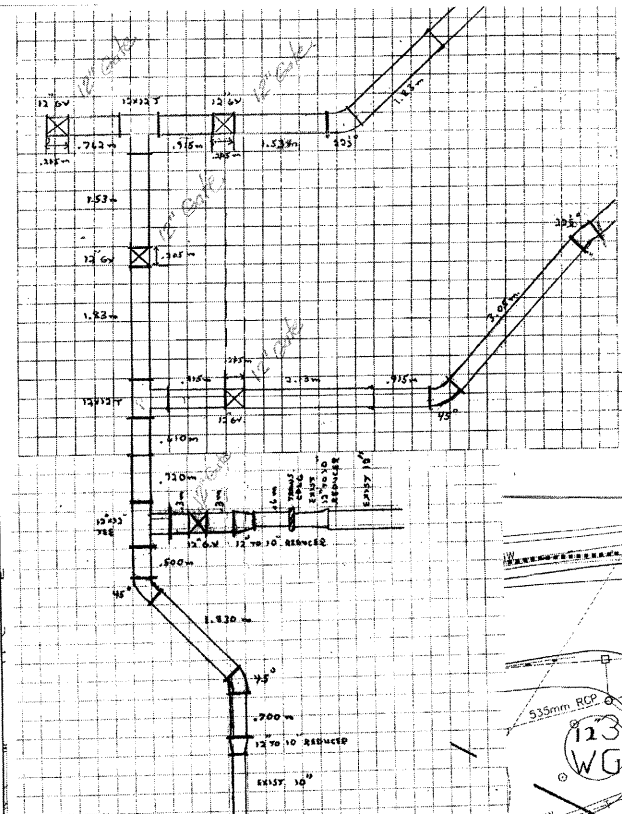
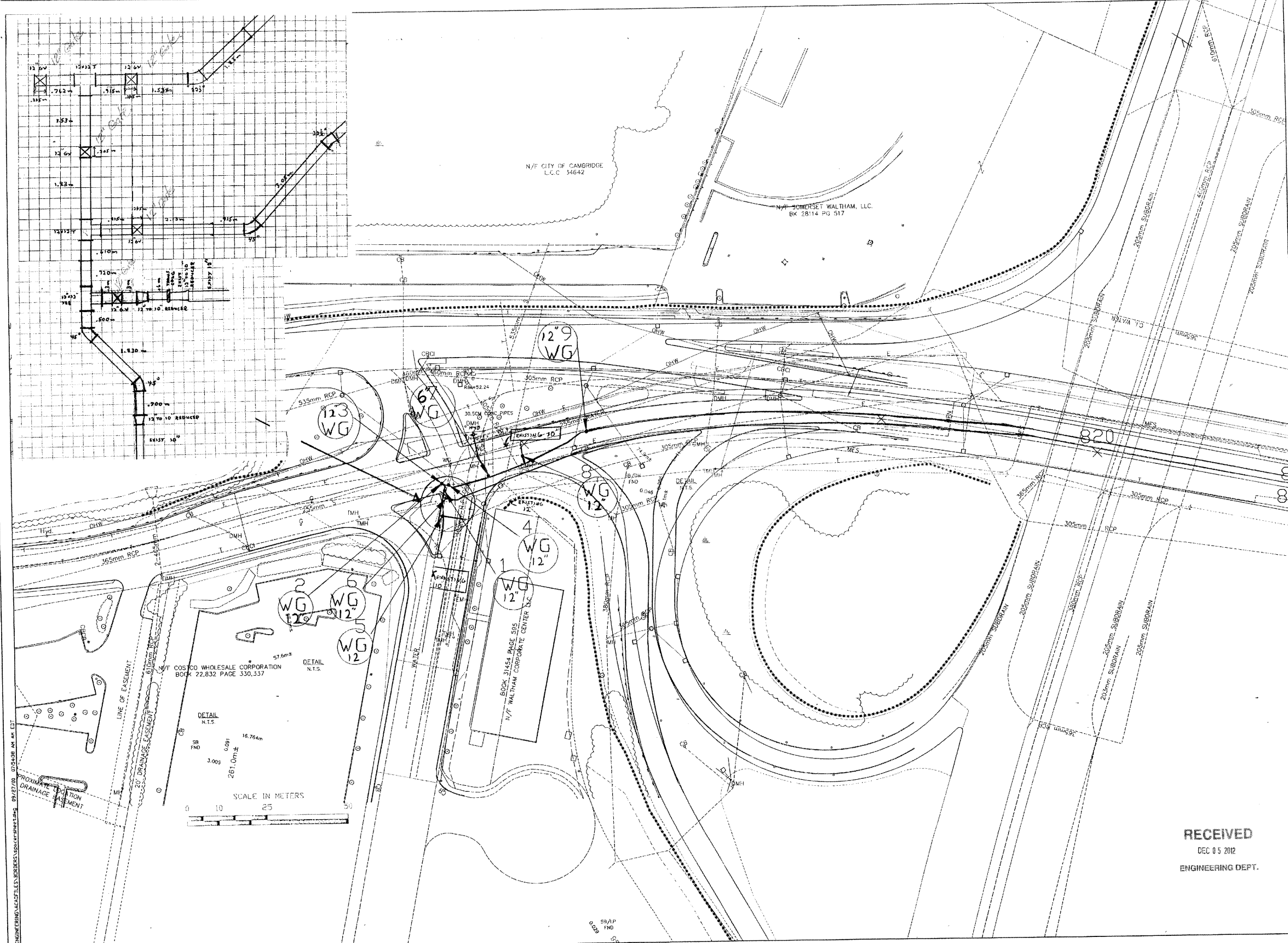


Second Ave. (D)
Water & Sewer
290 - # 350

SECOND AVENUE

SCALE: 40 FEET HOR. & 4 FEET VERT. PER INCH





No.	Date

Revision/Issue	Date

No.	Date

Drawing Title:
**WALTHAM
 WATER AS-BUILT**

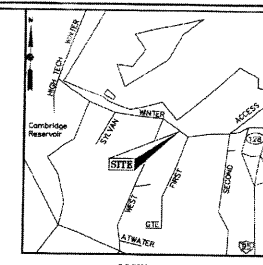
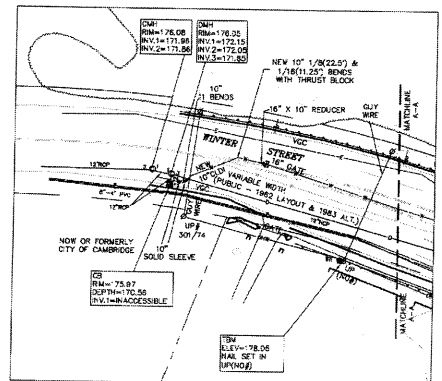
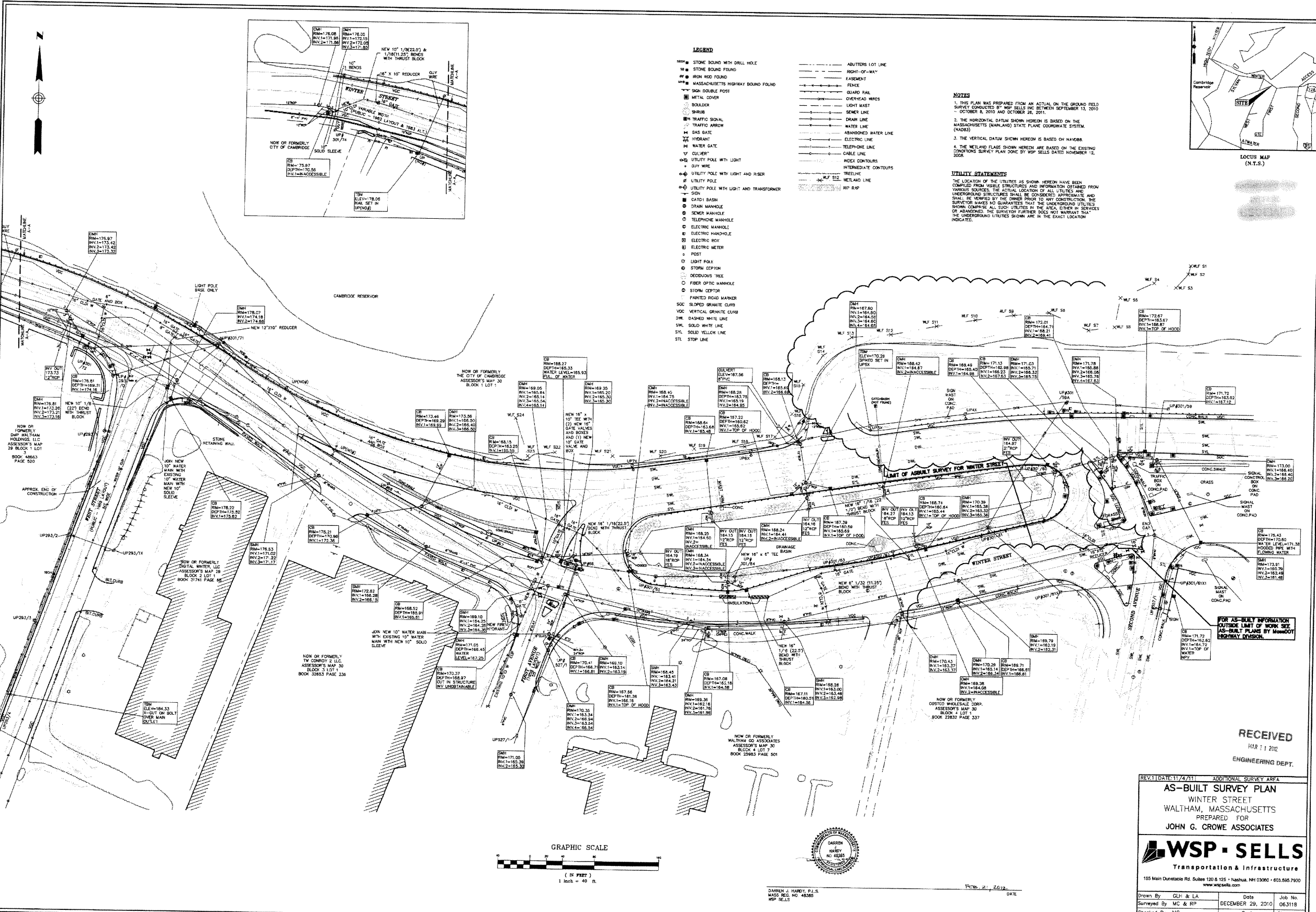
Date:	Dwg No.:
12/1/11	1
Drawn By:	Sheet:
PM	
Chk'd By:	WW-1
N/A	
Scale:	Revision:
1:50	0

RECEIVED
 DEC 05 2012
 ENGINEERING DEPT.



McCourt

S:\ENGINEERING\AS-BUILT FILES\WALTHAM WATER AS-BUILT.DWG
 08/27/10 07:54:38 AM AN EJT



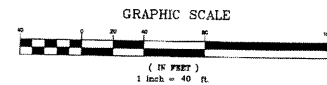
- LEGEND**
- ADJUSTERS LOT LINE
 - RIGHT-OF-WAY
 - EASEMENT
 - GUARD RAIL
 - OVERHEAD WIRES
 - LIGHT MAST
 - SEMER LINE
 - DRAIN LINE
 - WATER LINE
 - ABANDONED WATER LINE
 - ELECTRIC LINE
 - TELEPHONE LINE
 - CABLE LINE
 - HOSE CONTOURS
 - INTERMEDIATE CONTOURS
 - TREE LINE
 - WETLAND LINE
 - RIP RAP
- STONE BOUND WITH DRILL HOLE
 - STONE BOUND FOUND
 - IRON ROD FOUND
 - MASSACHUSETTS HIGHWAY BOUND FOUND
 - IRON DOUBLE POST
 - METAL CORNER
 - BOLLARD
 - SHRUB
 - TRAFFIC SIGNAL
 - TRAFFIC ARROW
 - GAS GATE
 - HYDRANT
 - WATER GATE
 - GUY WIRE
 - UTILITY POLE WITH LIGHT
 - UTILITY POLE WITH LIGHT AND RISER
 - UTILITY POLE
 - UTILITY POLE WITH LIGHT AND TRANSFORMER
 - SIGN
 - CAT 1 BASH
 - DRAIN MANHOLE
 - SEWER MANHOLE
 - TELEPHONE MANHOLE
 - ELECTRIC MANHOLE
 - ELECTRIC MANHOLE
 - ELECTRIC BOX
 - ELECTRIC METER
 - POST
 - LIGHT POLE
 - STORM CENTER
 - DECIDUOUS TREE
 - FAIRER OPTIC MANHOLE
 - STORM CENTER
 - PAINTED ROAD MARKER
 - SLOPED GRANITE CURB
 - VERTICAL GRANITE CURB
 - DASHED WHITE LINE
 - SOLID WHITE LINE
 - SOLID YELLOW LINE
 - STL STOP LINE

NOTES

1. THIS PLAN WAS PREPARED FROM AN ACTUAL ON THE GROUND FIELD SURVEY CONDUCTED BY WSP SELLS INC BETWEEN SEPTEMBER 13, 2010 - OCTOBER 8, 2010 AND OCTOBER 26, 2011.
2. THE HORIZONTAL DATUM SHOWN HEREON IS BASED ON THE MASSACHUSETTS (MAINLAND) STATE PLANE COORDINATE SYSTEM (NAD83).
3. THE VERTICAL DATUM SHOWN HEREON IS BASED ON NAVD83.
4. THE WETLAND FLAG SHOWN HEREON ARE BASED ON THE EXISTING CONDITIONS SURVEY PLAN DONE BY WSP SELLS DATED NOVEMBER 12, 2008.

UTILITY STATEMENTS

THE LOCATION OF THE UTILITIES AS SHOWN HEREON HAVE BEEN COMPILED FROM VISIBLE STRUCTURES AND INFORMATION OBTAINED FROM VARIOUS SOURCES. THE ACTUAL LOCATION OF ALL UTILITIES AND UNDERGROUND STRUCTURES SHALL BE CONSIDERED APPROXIMATE AND SHALL BE VERIFIED BY THE OWNER PRIOR TO ANY CONSTRUCTION. THE SURVEYOR MAKES NO GUARANTEE THAT THE UNDERGROUND UTILITIES SHOWN COMPRISE ALL SUCH UTILITIES IN THE AREA, EITHER IN SERVICES OR ABANDONED. THE SURVEYOR FURTHER DOES NOT WARRANT THAT THE UNDERGROUND UTILITIES SHOWN ARE IN THE EXACT LOCATION INDICATED.



DARREN J. HARDY, P.E.
MASS REG. NO. 46385
WSP SELLS
DATE

RECEIVED
12/21/2012
ENGINEERING DEPT.

REVISED DATE: 11/4/11 ADDITIONAL SURVEY AREA

AS-BUILT SURVEY PLAN
WINTER STREET
WALTHAM, MASSACHUSETTS
PREPARED FOR
JOHN G. CROWE ASSOCIATES

WSP SELLS
Transportation & Infrastructure
155 Main Dunstable Rd. Suite 120 & 125 • Waltham, MA 02450 • 603.995.7900
www.wspells.com

Drawn By: GLH & LA	Date: 08/31/11	Job No.: 083118
Surveyed By: MC & RP	DECEMBER 29, 2010	
Checked By: MC	Scale: 1" = 40'	Sheet No.: 1 OF 1
Book No.: N-216B		

