

THE CITY OF WALTHAM
MASSACHUSETTS

PURCHASING DEPARTMENT

**MacArthur School Playground Construction,
2D Issue**

ADDENDUM NO. 2

November 13, 2017

CHANGES, CORRECTIONS AND CLARIFICATIONS

The attention of bidders submitting proposals for the above subject project is called to the following addendum to the specifications. The items set forth herein, whether of omission, addition, substitution or clarification are all to be included in and form a part of the proposal submitted.

THE NUMBER OF THIS ADDENDUM (NO. 2) MUST BE ACKNOWLEDGED IN THE BID FORM - SECTION 00 41 13 (B).

ITEM 1: DELETE AND REPLACE BID DUE DATE

- a) Please **DELETE** any reference in the original bid packet to the original bid due date of 2.00 PM November 16, 2017 **and REPLACE** with **10.00 AM Monday November 27, 2017**
- b) **DELETE drawings** in the current bid packet and **REPLACE** them with the ones attached here

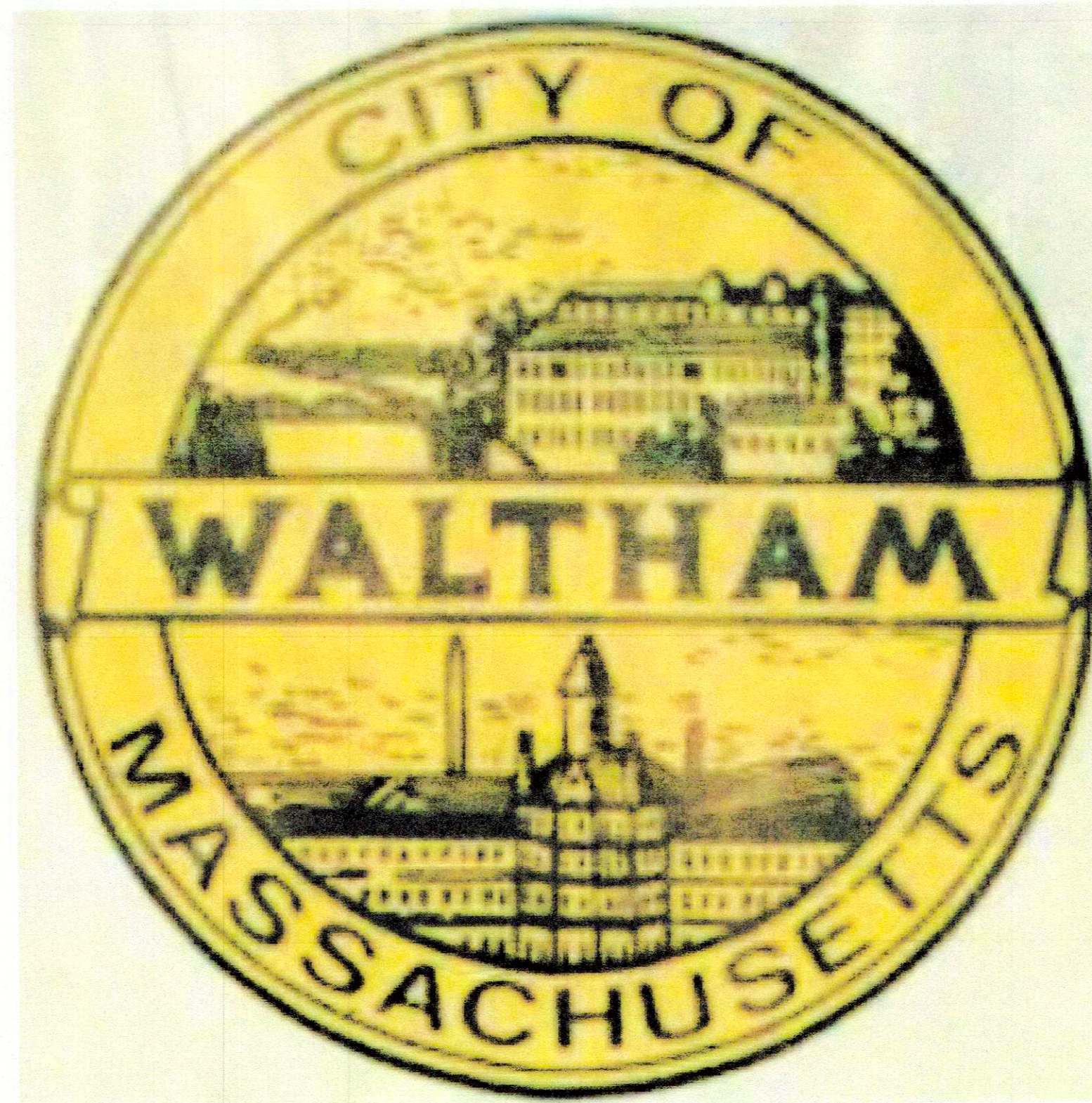
ITEM 2: CLARIFICATIONS

- 1. The construction details are shown on these drawings:
 - L-3 Rubber Safety Surface with Concrete Edge
Concrete Paving
Bituminous Concrete Pavement
 - L-4 Leaching Basin
 - L-5 Hopscotch Game
 - 4 Square Games
 - Basketball Court
 - Fence post in Concrete Mow Strip (Alternate No. 3)
- 2. The rubberized safety play surface shall be a two layer system with the base layer being SBR rubber with urethane binder and the top layer being EPDM rubber mixture of 50% standard and 50% color selected by Landscape Architect.

3. The existing survey in the proposed field area shown on the drawings is supplemented by data from the City's GSI to include an existing walk on the east side and fencing on the south site. The proposed grading closely follows the existing elevations meeting the grades at the walk, fence and southern edge of the existing detention system.
4. The Hopscotch Games are included in Alternate No. 2 where the existing brick and concrete pavement is removed and paved with bituminous concrete. The existing bituminous pavement from the brick area to the large paved area is to be seal coated with four 4 square game courts painted on the surface and included in the Base Bid.
5. Included in Alternate No. 3 the length of existing 6 foot high galvanized fencing to be removed and replaced with a black vinyl 8 foot high fence with concrete mowing strip shown on the drawings is 170 feet.
6. The surface of the existing bituminous concrete surface in Alternate No. 1 is to be milled and paved with a minimum of 1 inch bituminous concrete overlay.
7. As shown on the drawings and as specified the damaged areas of the rubber surface of the existing circular play structure area are to be repaired and the entire rubber surface paved with a 1 inch layer of poured in place colored rubber.
8. The layout (dimensions) of the proposed play structures area shall be as shown on drawing L-5 Play Structures Plan. The three concrete walks connecting the Play Structures area shown on drawings L-3 shall connect the Play Structures area to the existing play structures area and the adjacent bituminous walks.

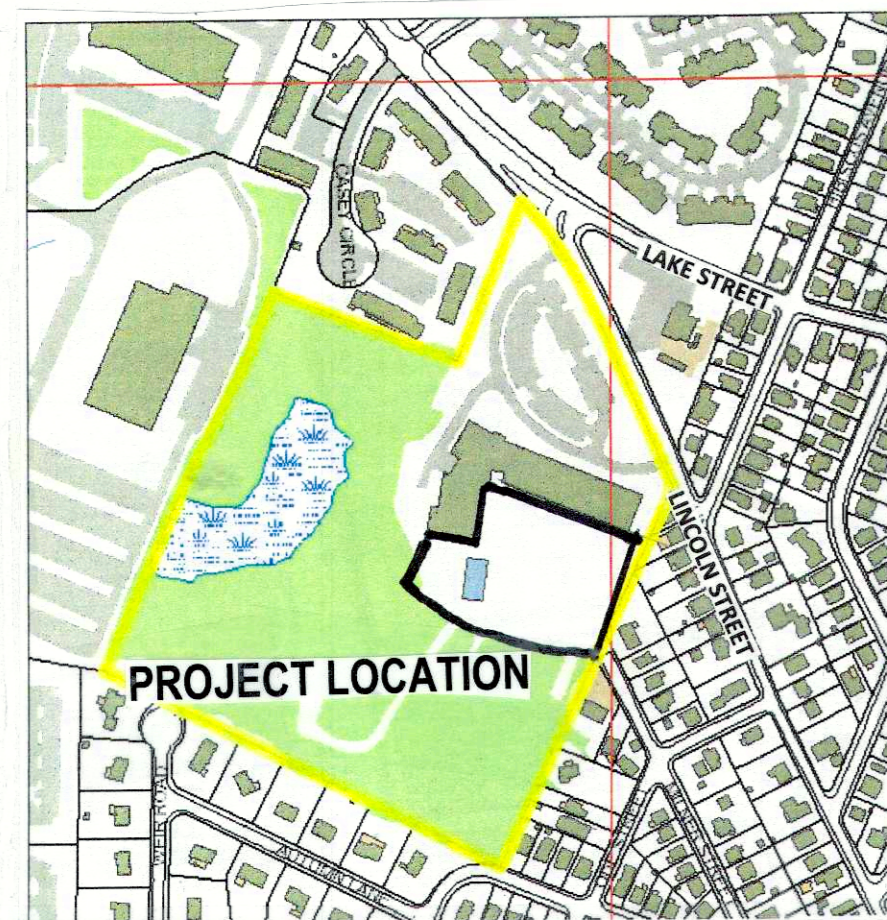
End of Addendum 2

**MacARTHUR ELEMENTARY SCHOOL PLAYGROUND
494 LINCOLN STREET, WALTHAM, MASSACHUSETTS**



Mayor Jeanette A. McCarthy

PROJECT LOCUS MAP



For Construction August 2017

LANDSCAPE ARCHITECTS

Marshall Gary, LLC
17 Naumkeag Row
Danvers, MA 01923
Tel: 617-699-6644
Email: BGARY@MGARY.COM

LIST OF DRAWINGS

- Cover
- L-1 Existing Conditions Plan
- L-2 Site Preparation Plan
- L-3 Layout & Materials Plan
- L-4 Grading & Drainage Plan
- L-5 Playground Enlargement & Installation
Details

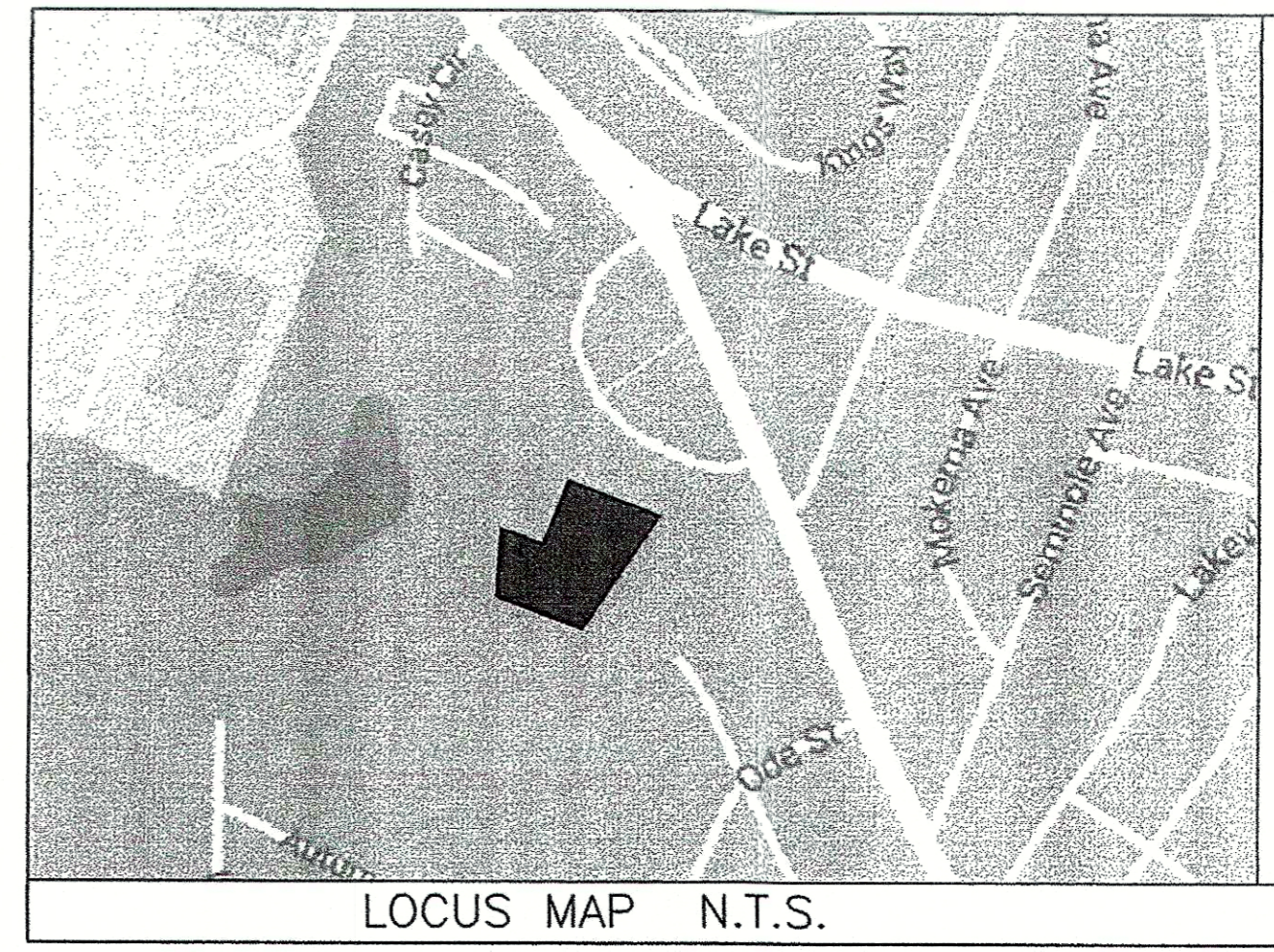
Revisions:

Rev	Date	Description

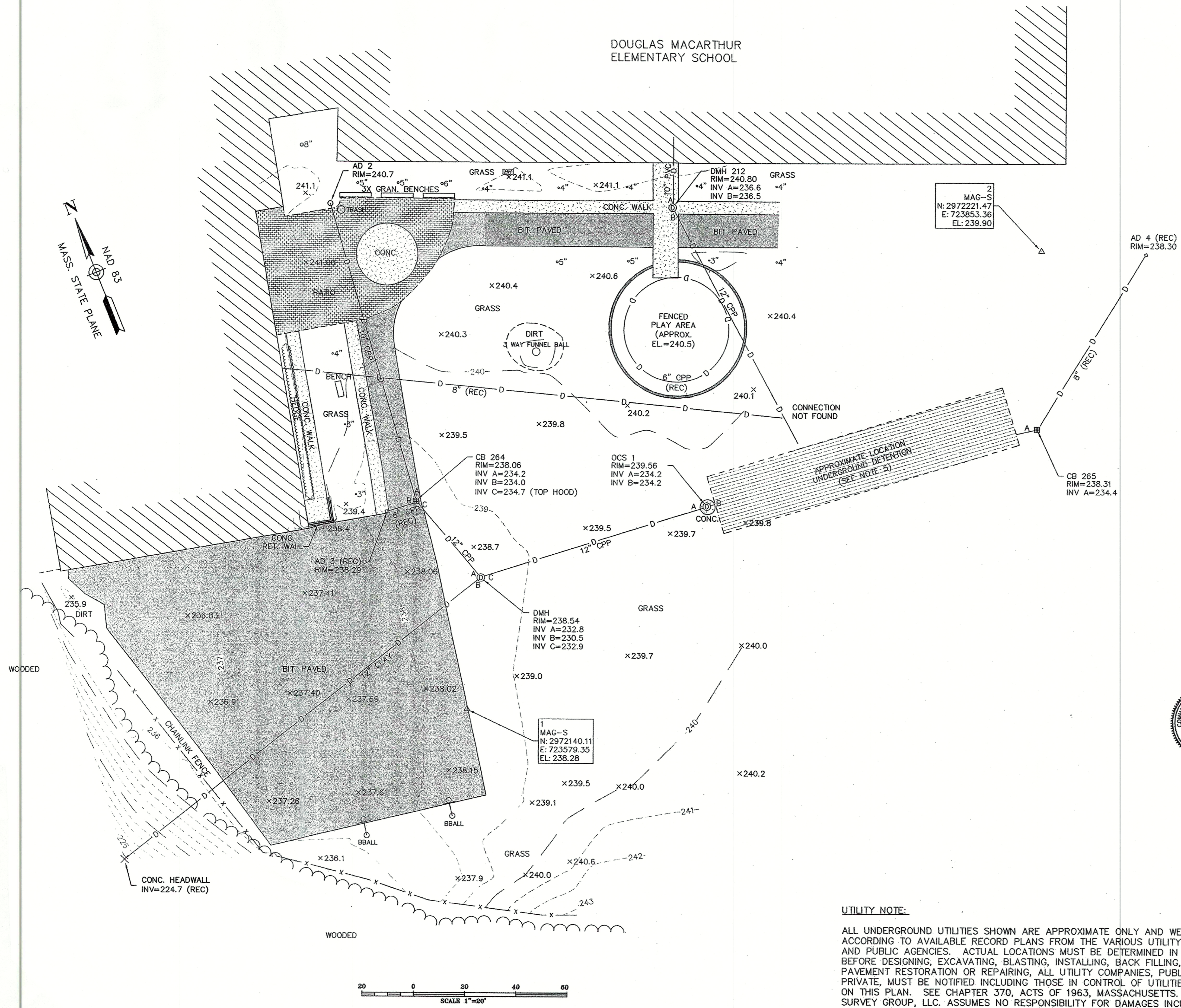
Seal:

FOR CONSTRUCTION

Date:	8-30-17
Scale:	As Shown
Drawn By:	JE
Reviewed By:	
Checked By:	BG
Approved By:	BG



**DOUGLAS MACARTHUR
ELEMENTARY SCHOOL**



- NOTES:**
- 1) THE INFORMATION SHOWN HEREON IS BASED ON AN ON-THE-GROUND SURVEY PERFORMED ON APRIL 19, 2017 UTILIZING A COMBINATION OF GPS OBSERVATIONS AND CONVENTIONAL SURVEY METHODS.
 - 2) THE HORIZONTAL DATUM FOR THIS PROJECT IS REFERENCED TO THE MASSACHUSETTS STATE PLANE COORDINATE SYSTEM REFERENCED TO THE NORTH AMERICAN DATUM OF 1983 (NAD83), CORS ADJUSTMENT (NA2011/GEIOD 12a) AS DETERMINED BY REDUNDANT GPS OBSERVATIONS MADE ON APRIL 19, 2017 UTILIZING KEYSTONE PRECISION INSTRUMENTS' KEYNET GPS VIRTUAL REFERENCE SYSTEM (VRS) NETWORK.
 - 3) THE VERTICAL DATUM FOR THIS PROJECT IS REFERENCED TO THE NORTH AMERICAN VERTICAL DATUM OF 1988 (NAV88), CORS ADJUSTMENT (NA2011/GEIOD 12a) AS DETERMINED BY REDUNDANT GPS OBSERVATIONS MADE ON APRIL 19, 2017 UTILIZING KEYSTONE PRECISION INSTRUMENTS' KEYNET GPS VIRTUAL REFERENCE SYSTEM (VRS) NETWORK, AND A CLOSED LOOP LEVEL RUN WAS PERFORMED BETWEEN THE CONTROL POINTS.
 - 4) NO WETLAND DELINEATION WAS PERFORMED AS PART OF THIS PROJECT.
 - 5) DRAINAGE STRUCTURE DESIGNATIONS ARE TAKEN FROM A PLAN SET ENTITLED "MACARTHUR ELEMENTARY SCHOOL, CONSTRUCTION BID SET" DATED 02 DECEMBER, 2003 PREPARED BY FLANSBURGH ASSOCIATES. LOCATION OF UNDERGROUND DETENTION STRUCTURE DERIVED FROM DETAIL AS SHOWN ON SHEET C-2 OF ABOVE REFERENCED PLAN SET.

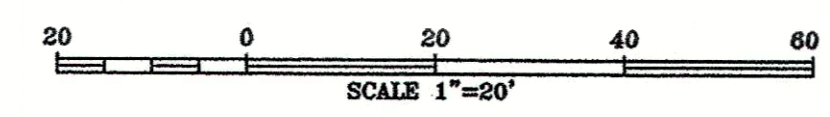


I CERTIFY THE LOCATIONS ON THIS PLAN RESULT FROM AN ACTUAL SURVEY MADE ON THE GROUND.
James E. Peterson
REGISTERED PROFESSIONAL LAND SURVEYOR
FOR ALPHA SURVEY GROUP, LLC
4/26/17
DATE

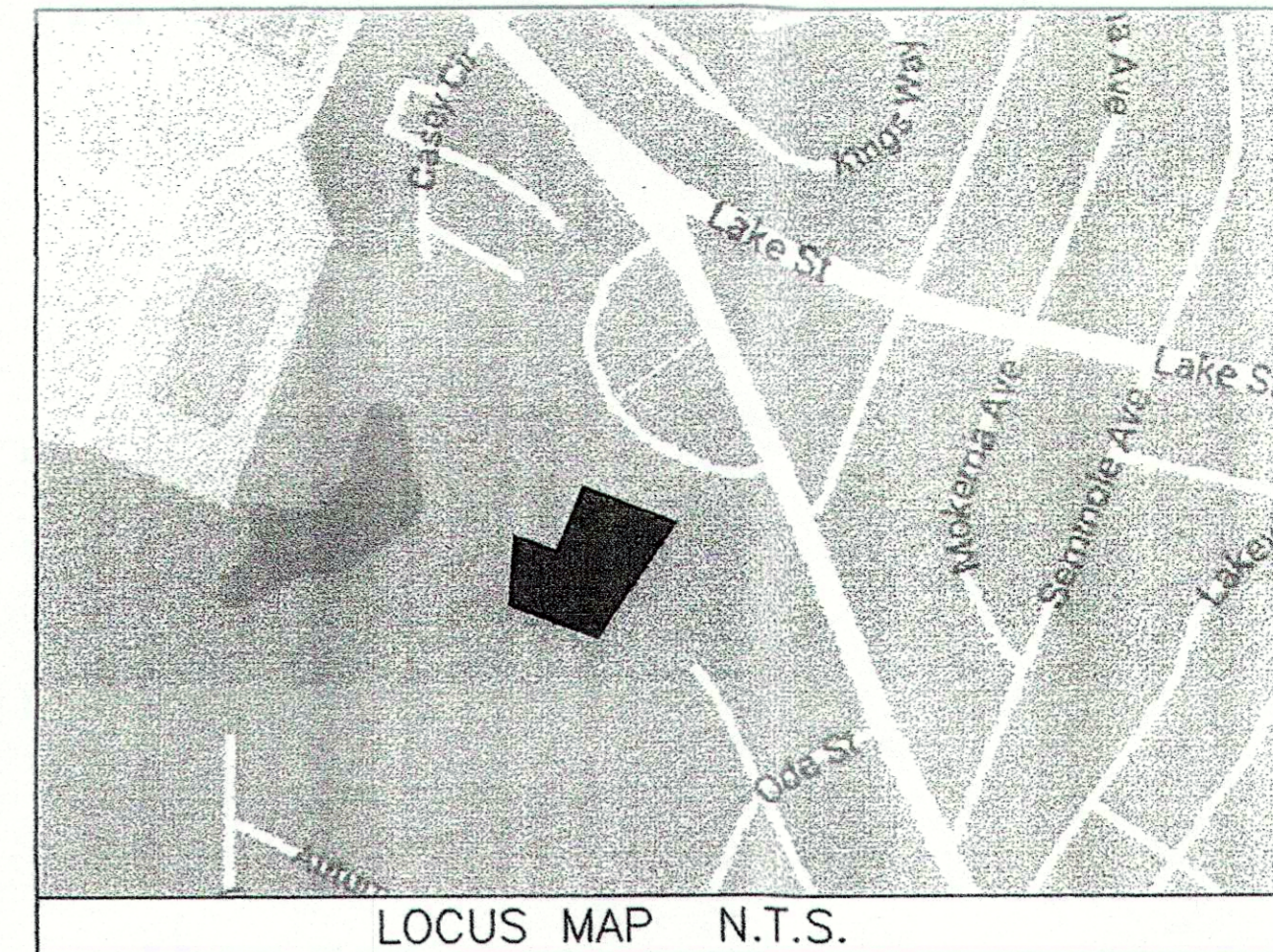
SYMBOL LEGEND

DRAIN MANHOLE	⊙
CATCH BASIN	⊞
HAND HOLE	⊞
TREE (TRUNK SIZE INCHES)	○
DRAIN LINE	—D—
CHAIN LINK FENCE	—X—X—
TREELINE	~~~~~
RETAINING	RET.
CONCRETE:	CONC.
BITUMINOUS:	BIT.
CORRUGATED PLASTIC PIPE	CPP
AREA DRAIN	AD
OUTLET CONTROL STRUCTURE	OCS
SPOT GRADE:	X 100.00
MAG NAIL	MAG
TRAVERSE (CONTROL) POINT	△
RECORD	(REC)
BASKETBALL HOOP	BBALL

UTILITY NOTE:
ALL UNDERGROUND UTILITIES SHOWN ARE APPROXIMATE ONLY AND WERE COMPILED ACCORDING TO AVAILABLE RECORD PLANS FROM THE VARIOUS UTILITY COMPANIES AND PUBLIC AGENCIES. ACTUAL LOCATIONS MUST BE DETERMINED IN THE FIELD. BEFORE DESIGNING, EXCAVATING, BLASTING, INSTALLING, BACK FILLING, GRADING, PAVEMENT RESTORATION OR REPAIRING, ALL UTILITY COMPANIES, PUBLIC & PRIVATE, MUST BE NOTIFIED INCLUDING THOSE IN CONTROL OF UTILITIES NOT SHOWN ON THIS PLAN. SEE CHAPTER 370, ACTS OF 1963, MASSACHUSETTS. ALPHA SURVEY GROUP, LLC. ASSUMES NO RESPONSIBILITY FOR DAMAGES INCURRED AS A RESULT OF UTILITIES OMITTED OR INACCURATELY SHOWN. BEFORE FUTURE CONNECTIONS, THE APPROPRIATE UTILITY ENGINEERING DEPARTMENTS MUST BE CONSULTED. CALL "DIG SAFE" AT 811.



z:\2017\17107\dwg\17107-ec.dwg



LOCUS MAP N.T.S.

Project:
CITY OF WALTHAM

 MacArthur School
 Playground

MG
 Marshall | Gary LLC
 17 Naumkeag Row
 Danvers, MA 01923
 p. 781.245.7699 e. 617.699.6644
 www.mgary.com

Consultants:
ALPHA
 SURVEY GROUP, LLC
 695 WAREHAM STREET
 MIDDLEBORO, MA 02346

Revisions:

Rev	Date	Description

Seal:

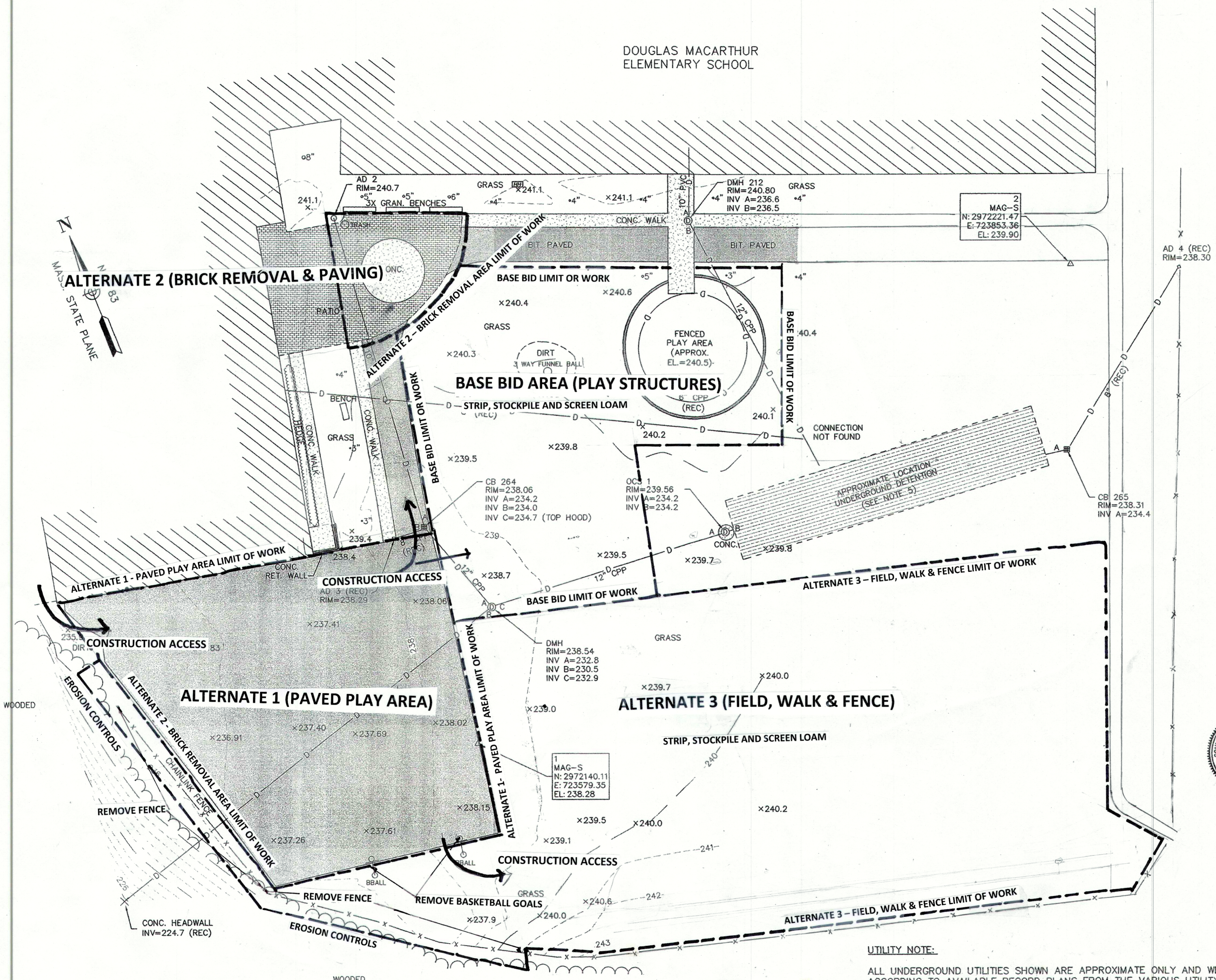
FOR CONSTRUCTION

Date: 8-30-17
 Scale: As Shown
 Drawn By: JE
 Reviewed By:
 Checked By: BG
 Approved By: BG

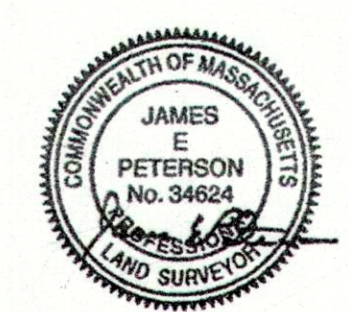
Drawing Title:
SITE PREPARATION PLAN

Sheet Number:
L-2

DOUGLAS MACARTHUR
 ELEMENTARY SCHOOL



- NOTES:**
- 1) THE INFORMATION SHOWN HEREON IS BASED ON AN ON-THE-GROUND SURVEY PERFORMED ON APRIL 19, 2017 UTILIZING A COMBINATION OF GPS OBSERVATIONS AND CONVENTIONAL SURVEY METHODS.
 - 2) THE HORIZONTAL DATUM FOR THIS PROJECT IS REFERENCED TO THE MASSACHUSETTS STATE PLANE COORDINATE SYSTEM REFERENCED TO THE NORTH AMERICAN DATUM OF 1983 (NAD83), CORS ADJUSTMENT (NA2011/GEOD 12a) AS DETERMINED BY REDUNDANT GPS OBSERVATIONS MADE ON APRIL 19, 2017 UTILIZING KEYSTONE PRECISION INSTRUMENTS' KEYNET GPS VIRTUAL REFERENCE SYSTEM (VRS) NETWORK.
 - 3) THE VERTICAL DATUM FOR THIS PROJECT IS REFERENCED TO THE NORTH AMERICAN VERTICAL DATUM OF 1988 (NAVD88), CORS ADJUSTMENT (NA2011/GEOD 12a) AS DETERMINED BY REDUNDANT GPS OBSERVATIONS MADE ON APRIL 19, 2017 UTILIZING KEYSTONE PRECISION INSTRUMENTS' KEYNET GPS VIRTUAL REFERENCE SYSTEM (VRS) NETWORK, AND A CLOSED LOOP LEVEL RUN WAS PERFORMED BETWEEN THE CONTROL POINTS.
 - 4) NO WETLAND DELINEATION WAS PERFORMED AS PART OF THIS PROJECT.
 - 5) DRAINAGE STRUCTURE DESIGNATIONS ARE TAKEN FROM A PLAN SET ENTITLED "MACARTHUR ELEMENTARY SCHOOL, CONSTRUCTION BID SET" DATED 02 DECEMBER, 2003 PREPARED BY FLANSBURGH ASSOCIATES. LOCATION OF UNDERGROUND DETENTION STRUCTURE DERIVED FROM DETAIL AS SHOWN ON SHEET C-2 OF ABOVE REFERENCED PLAN SET.



I CERTIFY THE LOCATIONS ON THIS PLAN RESULT FROM AN ACTUAL SURVEY MADE ON THE GROUND.

James E. Peterson
 REGISTERED PROFESSIONAL LAND SURVEYOR
 FOR ALPHA SURVEY GROUP, LLC

4/26/17
 DATE

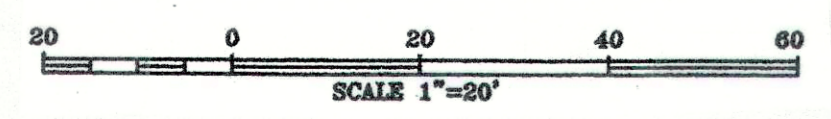
SYMBOL LEGEND

DRAIN MANHOLE	⊙
CATCH BASIN	⊞
HAND HOLE	⊞
TREE (TRUNK SIZE INCHES)	○
DRAIN LINE	— D —
CHAIN LINK FENCE	— X — X —
TREELINE	~~~~~
RETAINING	RET.
CONCRETE:	CONC.
BITUMINOUS:	BIT.
CORRUGATED PLASTIC PIPE	CPP
AREA DRAIN	AD
OUTLET CONTROL STRUCTURE	OCS
SPOT GRADE:	X 100.00
MAG NAIL	MAG
TRAVERSE (CONTROL) POINT	△
RECORD	(REC)
BASKETBALL HOOP	BBALL

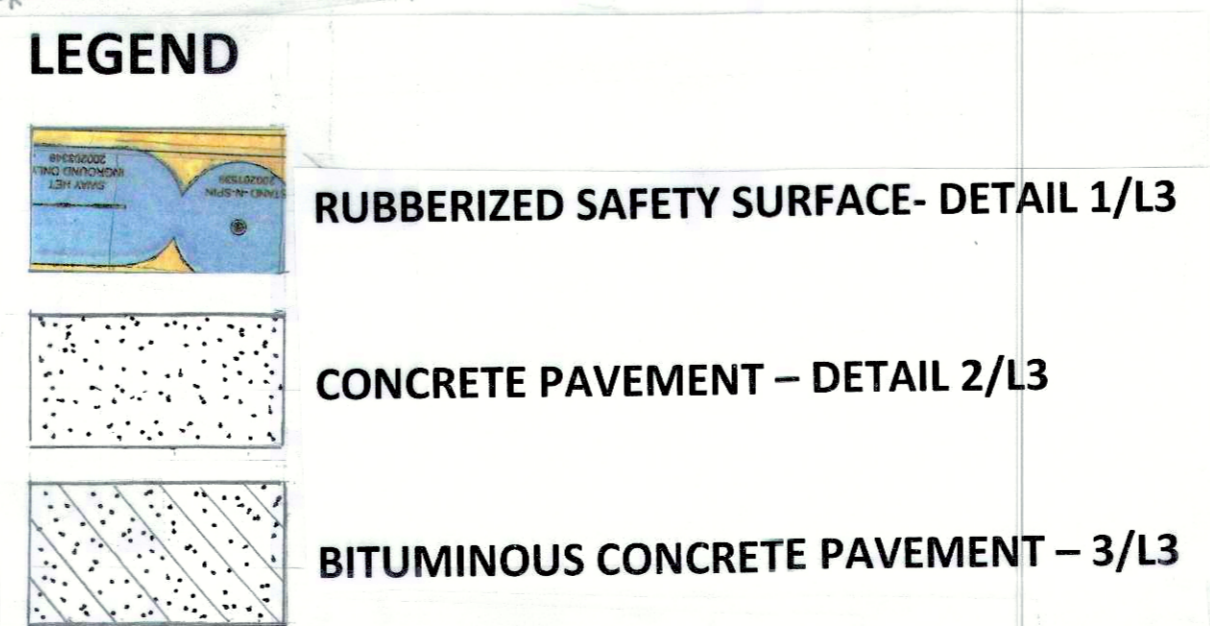
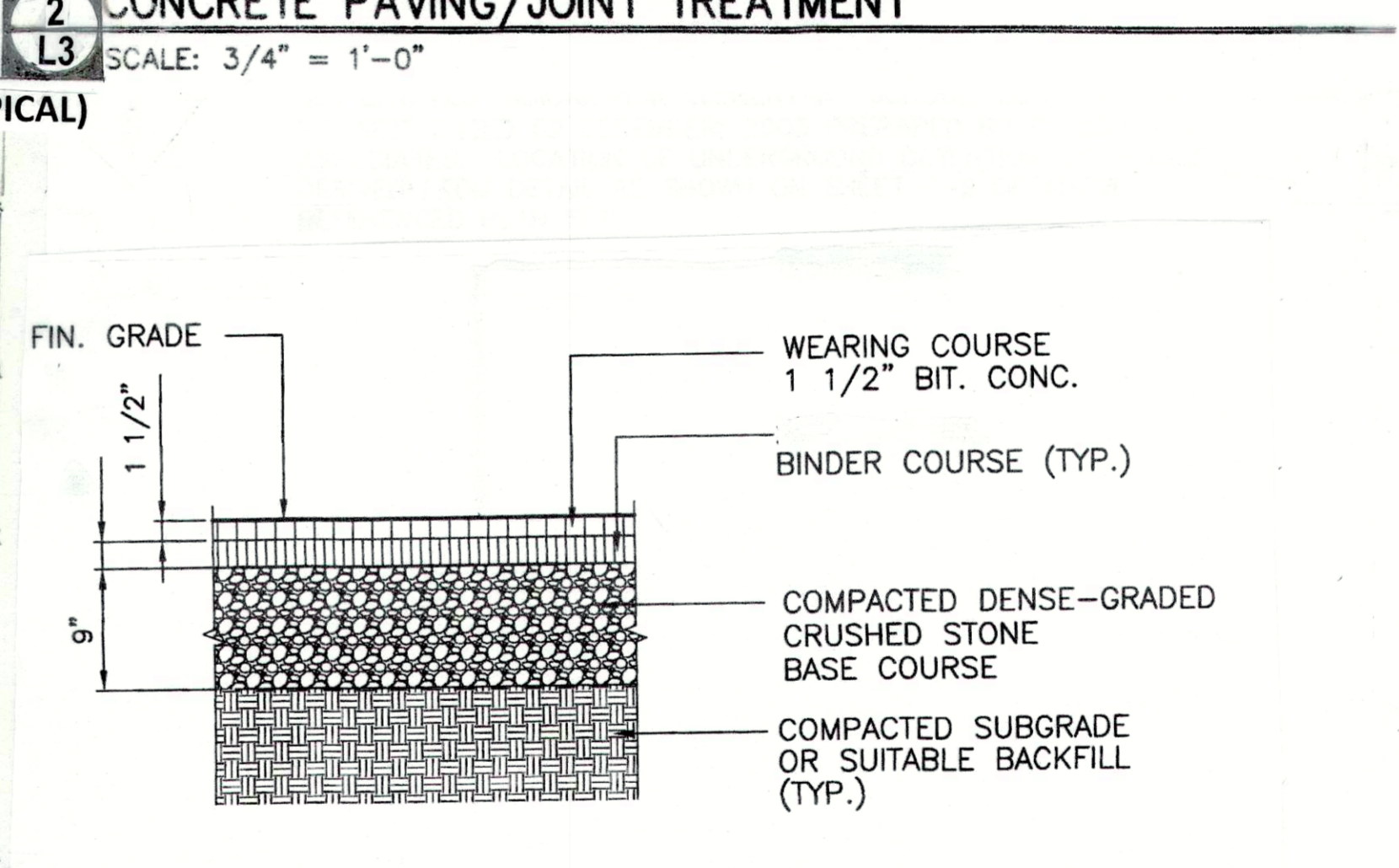
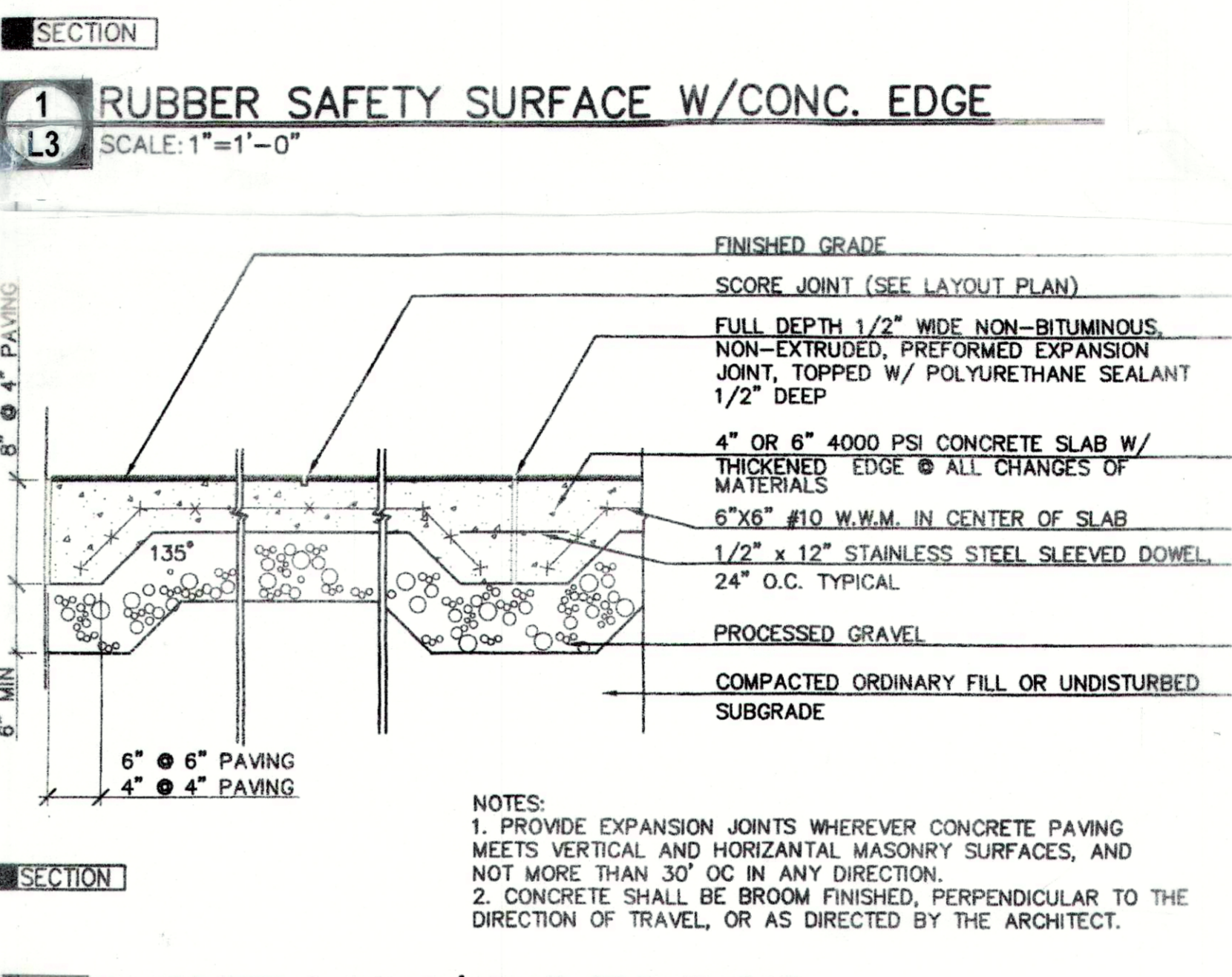
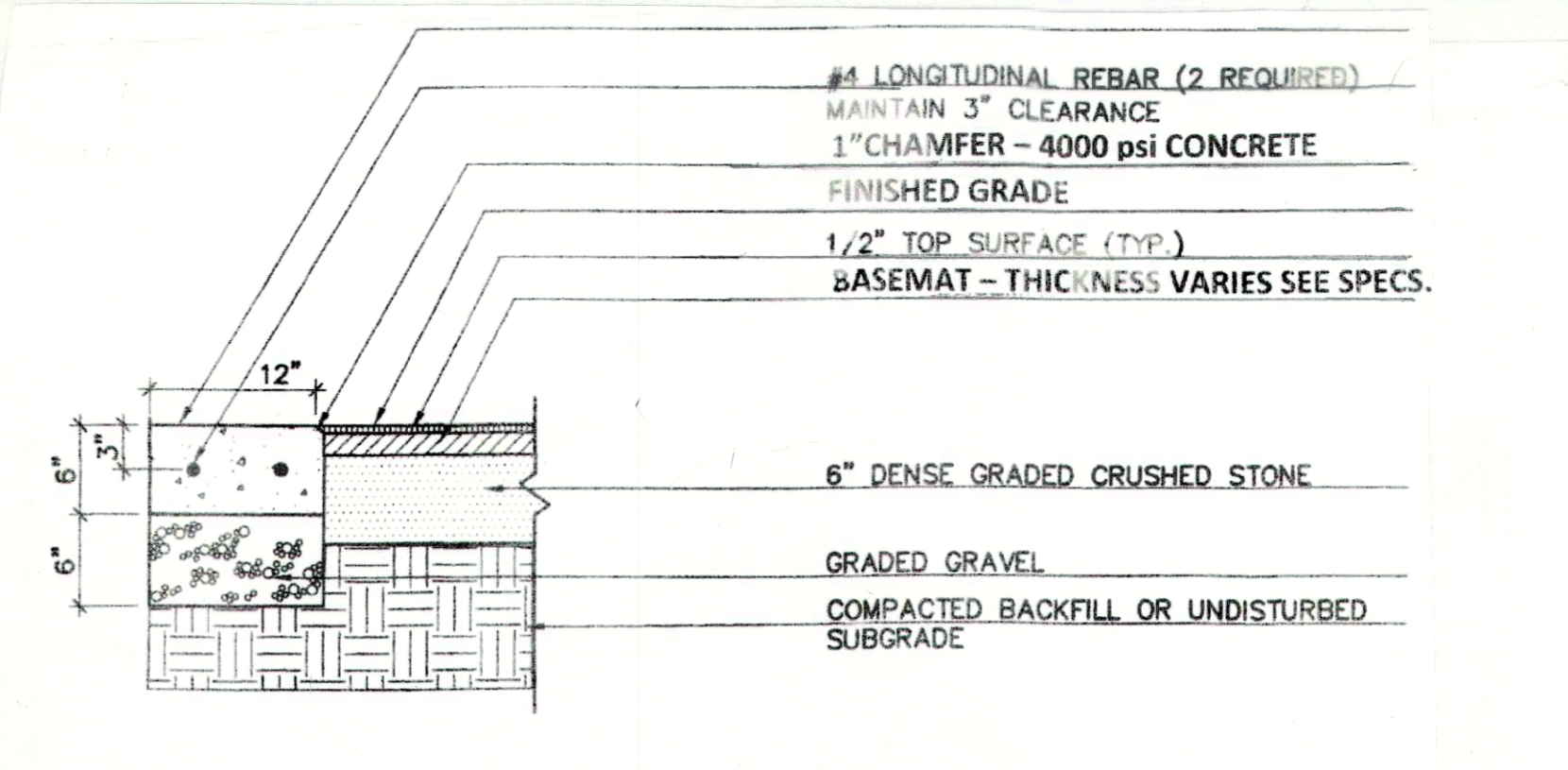
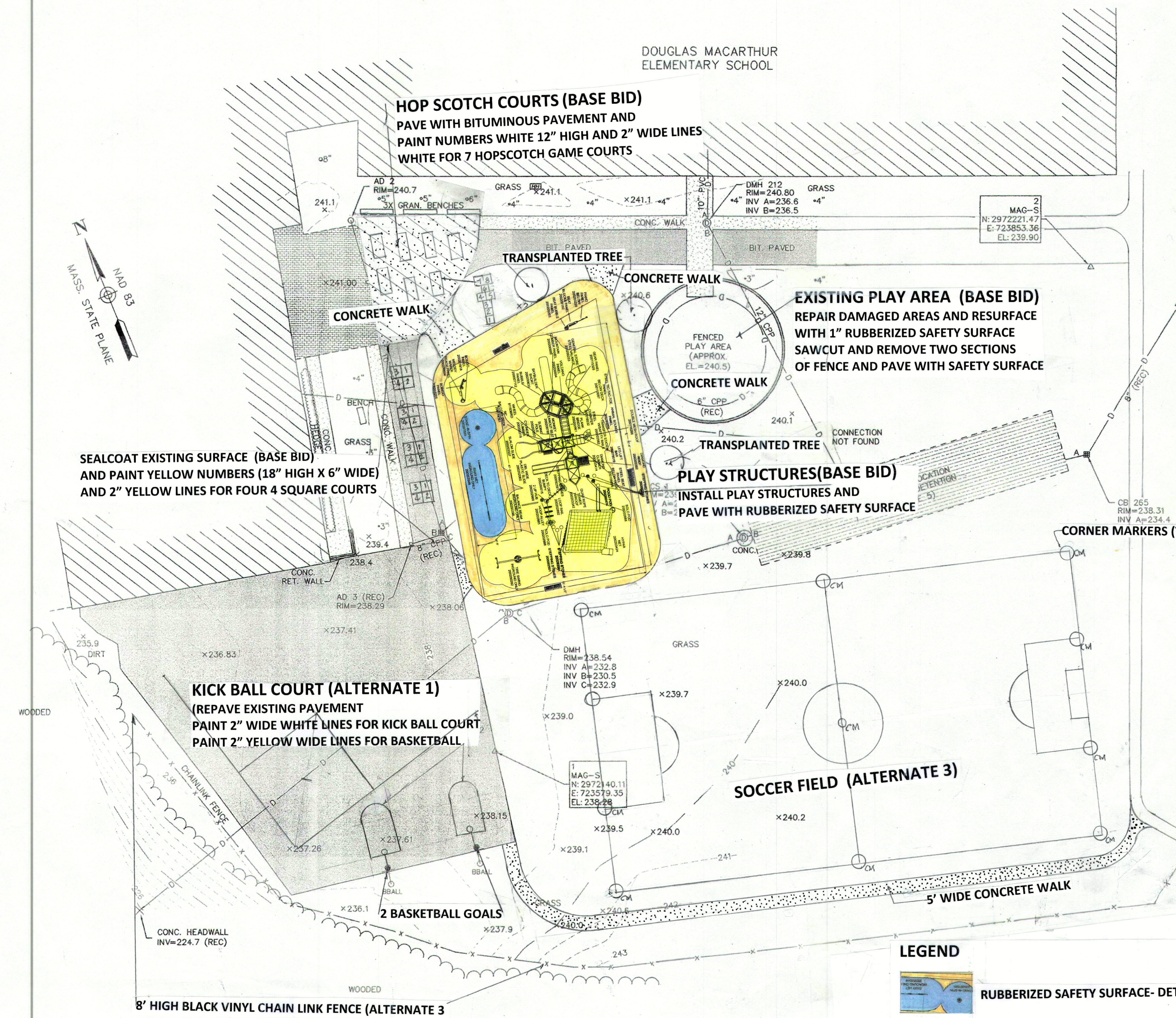
UTILITY NOTE:

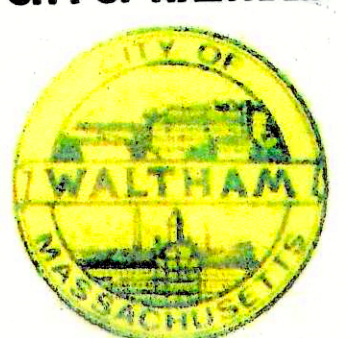
ALL UNDERGROUND UTILITIES SHOWN ARE APPROXIMATE ONLY AND WERE COMPILED ACCORDING TO AVAILABLE RECORD PLANS FROM THE VARIOUS UTILITY COMPANIES AND PUBLIC AGENCIES. ACTUAL LOCATIONS MUST BE DETERMINED IN THE FIELD. BEFORE DESIGNING, EXCAVATING, BLASTING, INSTALLING, BACK FILLING, GRADING, PAVEMENT RESTORATION OR REPAIRING, ALL UTILITY COMPANIES, PUBLIC & PRIVATE, MUST BE NOTIFIED INCLUDING THOSE IN CONTROL OF UTILITIES NOT SHOWN ON THIS PLAN. SEE CHAPTER 370, ACTS OF 1963, MASSACHUSETTS. ALPHA SURVEY GROUP, LLC. ASSUMES NO RESPONSIBILITY FOR DAMAGES INCURRED AS A RESULT OF UTILITIES OMITTED OR INACCURATELY SHOWN. BEFORE FUTURE CONNECTIONS, THE APPROPRIATE UTILITY ENGINEERING DEPARTMENTS MUST BE CONSULTED. CALL "DIG SAFE" AT 811.

- NOTES:**
1. FURNISH, INSTALL, MAINTAIN AND REMOVE TEMPORARY CONSTRUCTION FENCE AND CONSTRUCTION ACCESS GATES FOR EACH CONSTRUCTION AREA.
 2. FURNISH, INSTALL, MAINTAIN AND REMOVE EROSION CONTROLS (ALTERNATE 1)



z:\2017\17107\dwg\17107-ec.dwg



Project:
CITY OF WALTHAM

 MacArthur School
 Playground


MG
 Marshall | Gary LLC
 17 Naumkeag Row
 Danvers, MA 01923
 p. 781.245.7699 c. 617.699.6644
 www.mgary.com

Consultants:

Rev	Date	Description

Revisions:

Rev	Date	Description

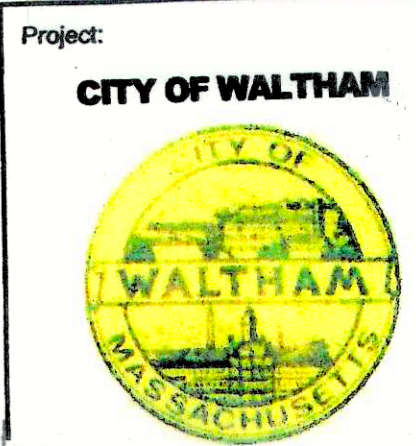
Seal:


FOR CONSTRUCTION

Date:	8-30-17
Scale:	As Shown
Drawn By:	JE
Reviewed By:	
Checked By:	BG
Approved By:	BG

Drawing Title:
LAYOUT & MATERIALS PLAN

Sheet Number:
L-3



MacArthur School
Playground

MG

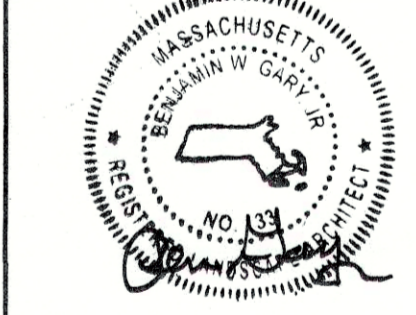
Marshall | Gary LLC
17 Naumkeag Row
Danvers, MA 01923
p. 781.245.7699 c. 617.699.6644
www.mgary.com

Consultants:

Revisions:

Rev	Date	Description

Seal:



FOR CONSTRUCTION

Date: 8-30-17

Scale: As Shown

Drawn By: JE

Reviewed By:

Checked By: BG

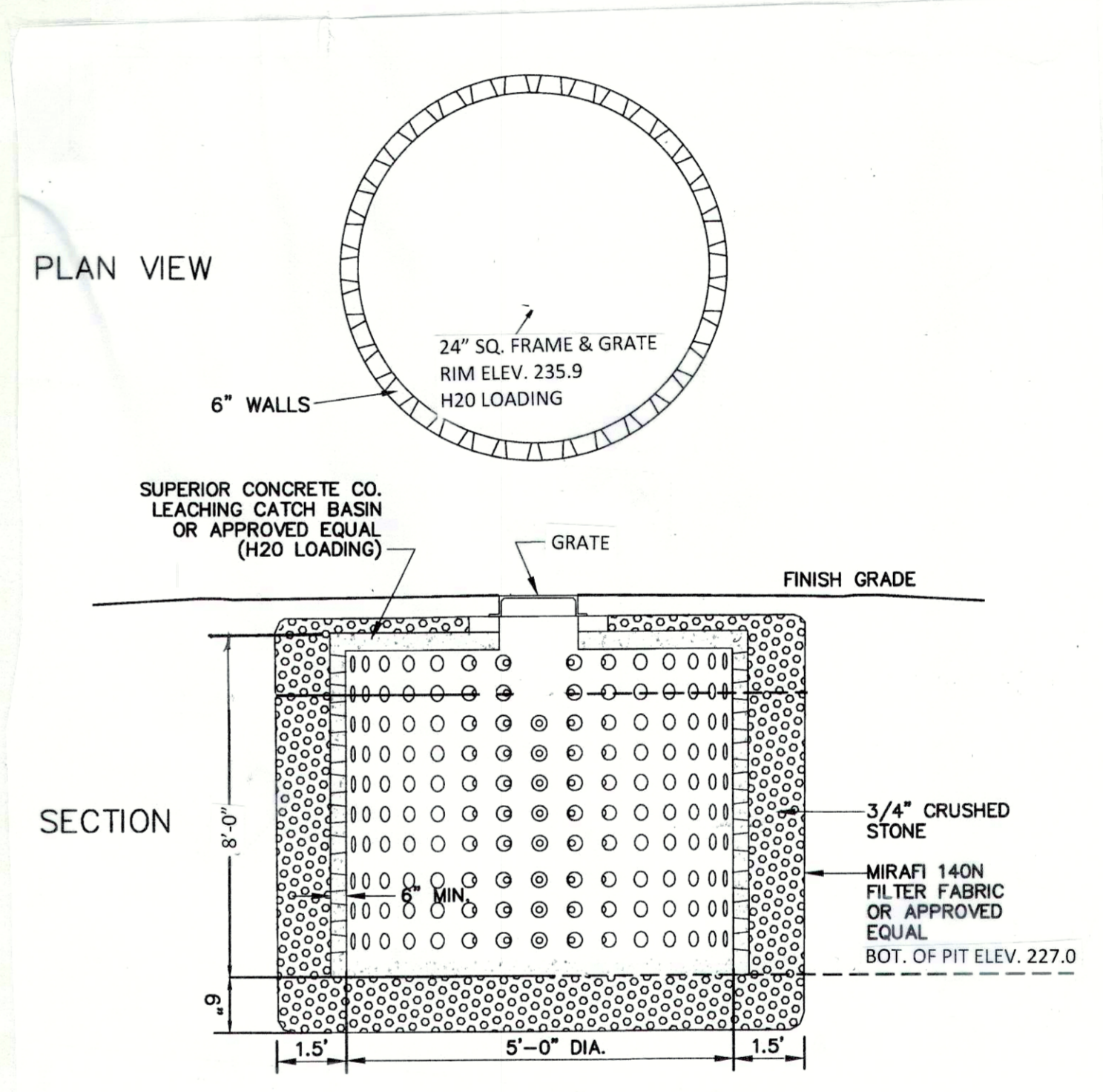
Approved By: BG

Drawing Title:

**GRADING &
DRAINAGE
PLAN**

Sheet Number:

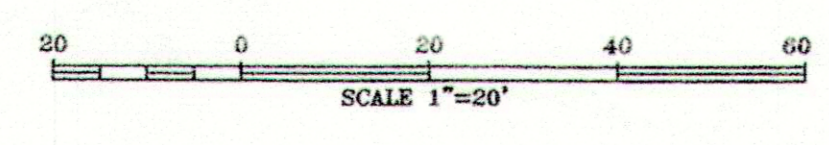
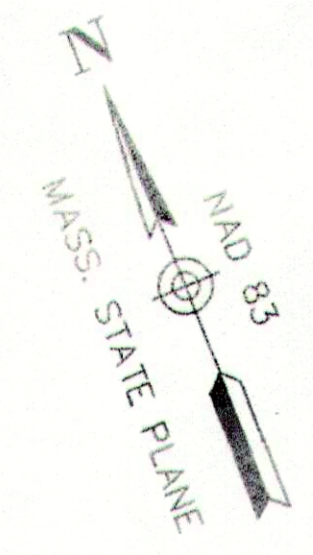
L-4

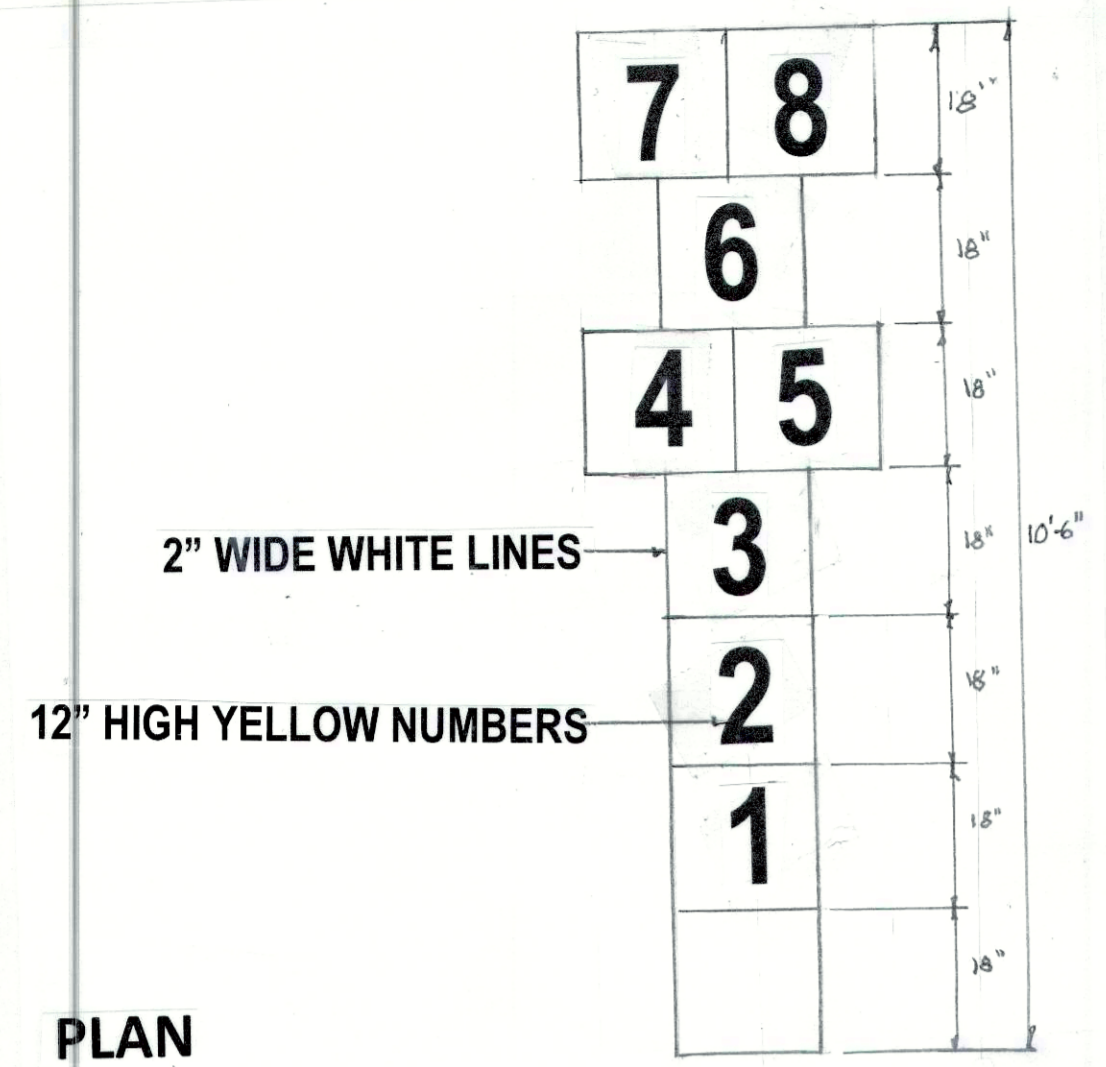


1 LEACHING BASIN
L4 SCALE: N.T.S.

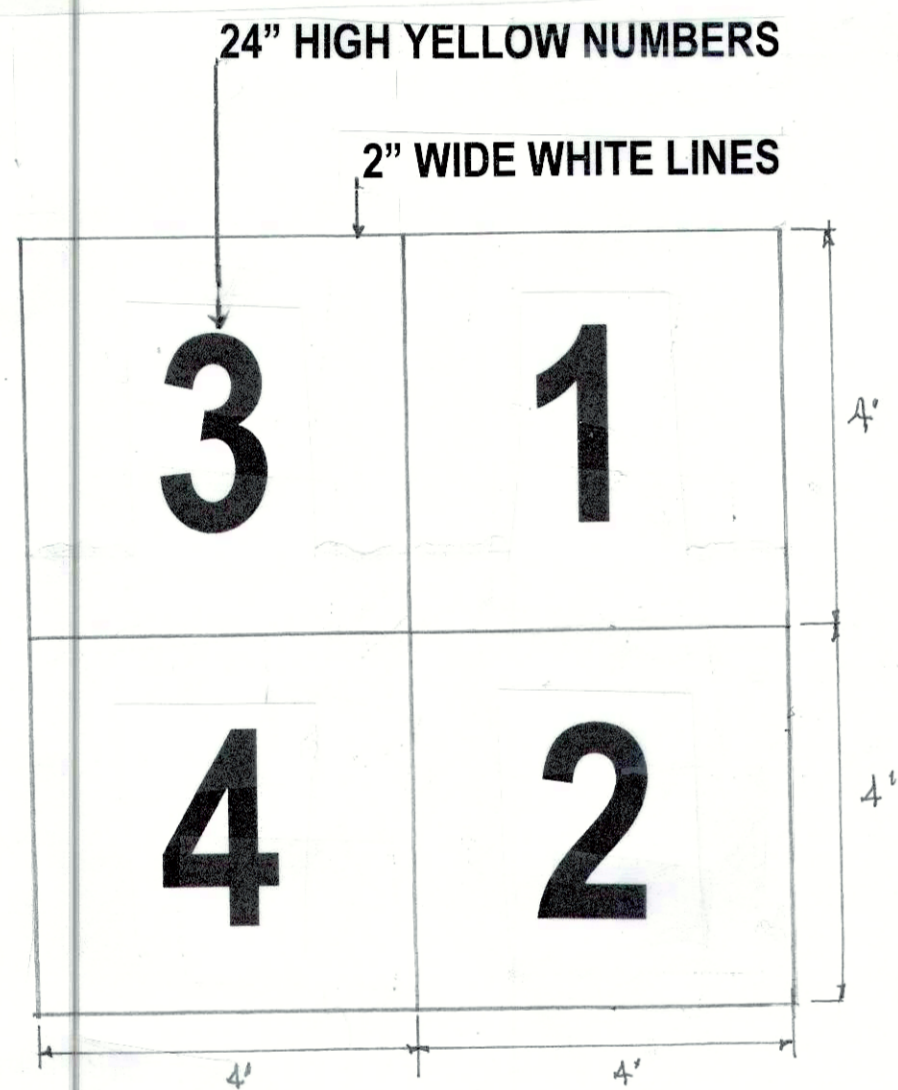
LEGEND

- EXISTING CONTOUR
- PROPOSED CONTOUR
- EXISTING SPOT ELEVATION
- PROPOSED SPOT ELEVATION

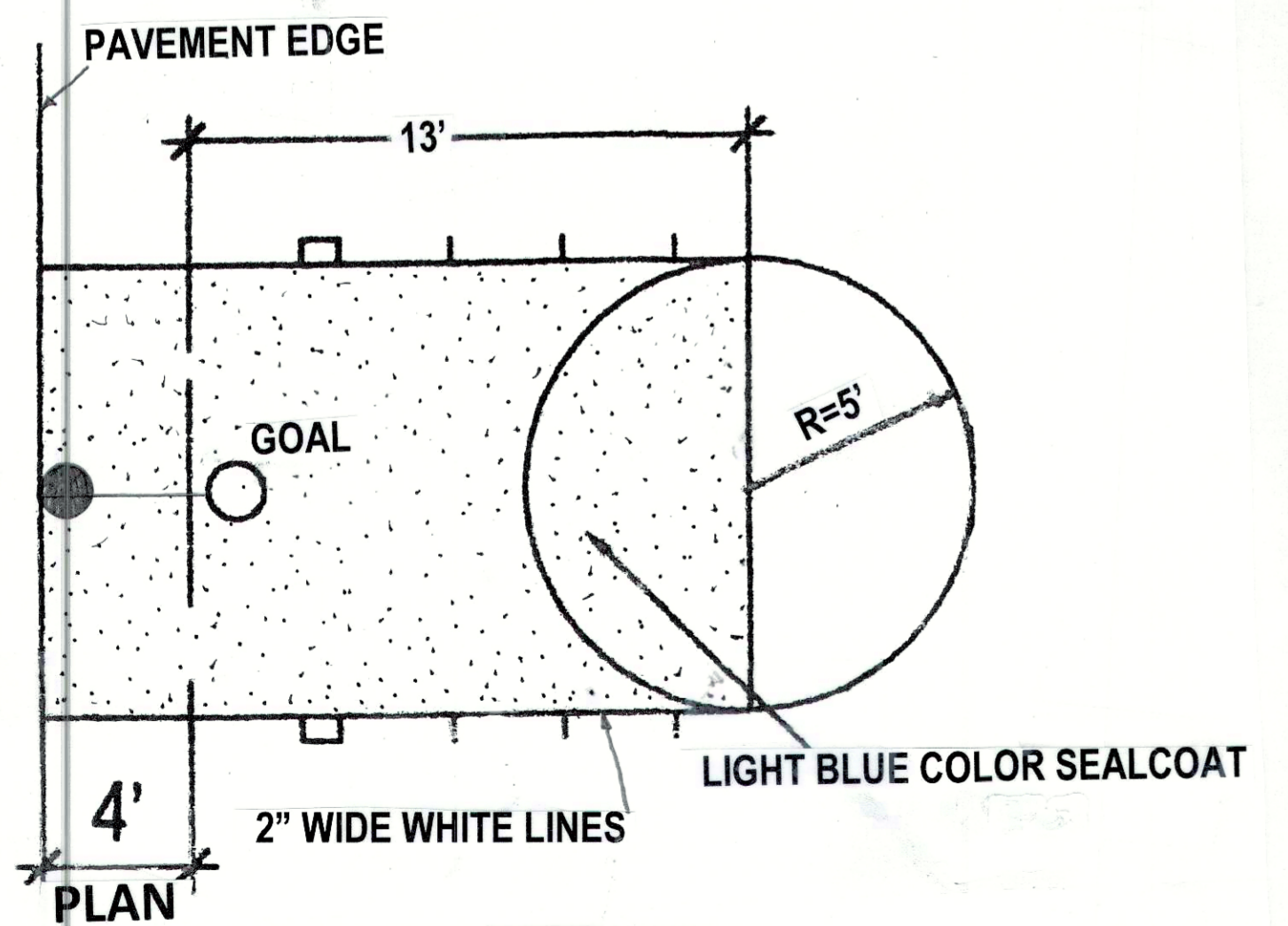




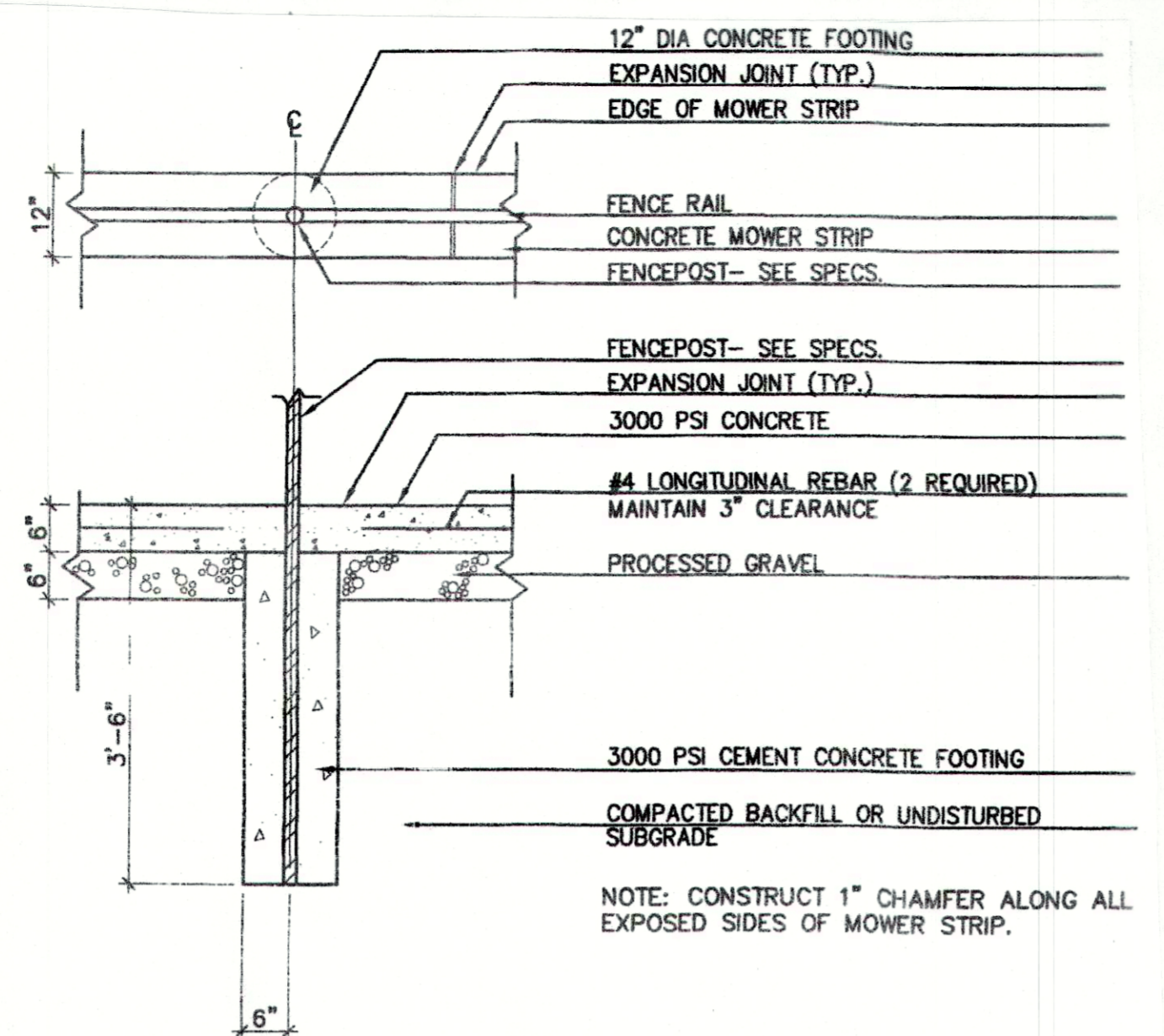
1 HOPSCOTCH GAME
L5 SCALE: 1/2" = 1'-0"



2 4 SQUARE GAME
L5 SCALE: 1/2" = 1'-0"



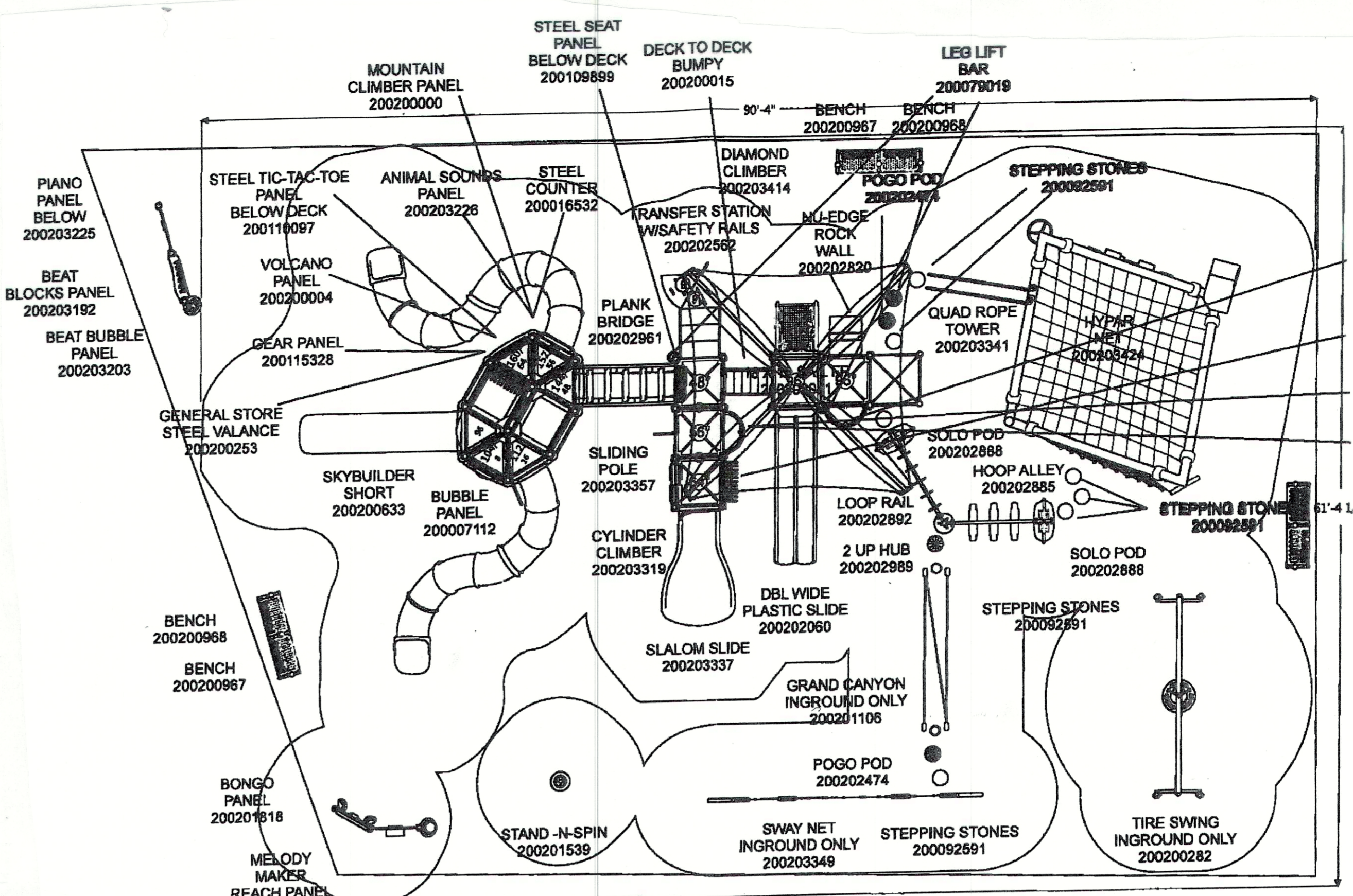
3 BASKETBALL COURT
L5 SCALE: 1/4" = 1'-0"



4 FENCEPOST FOOTING IN CONCRETE MOWER STRIP
L5 SCALE: NOT TO SCALE

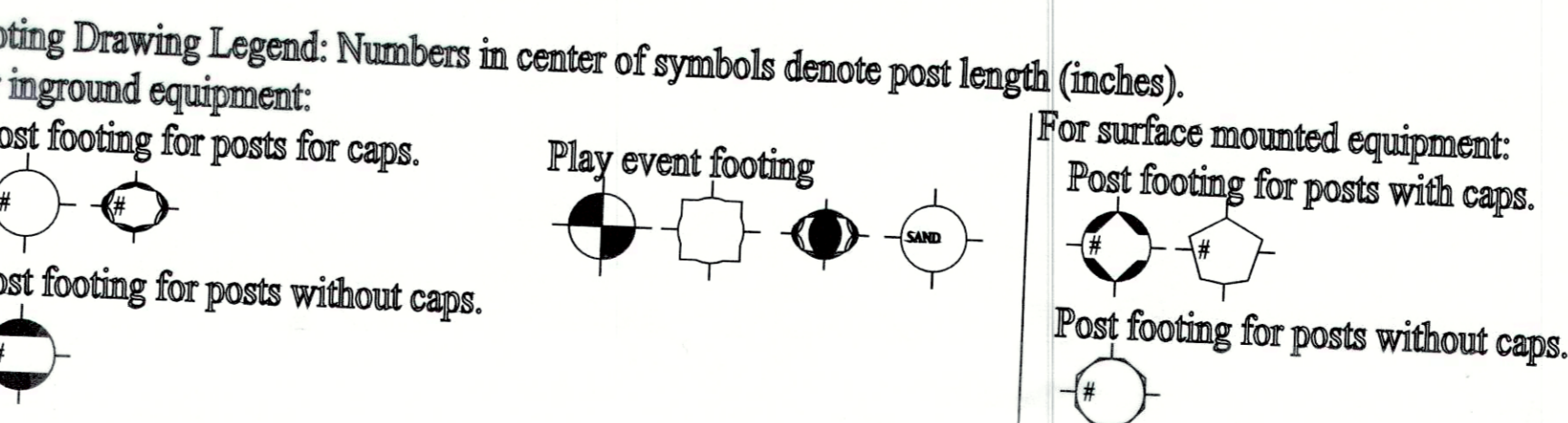
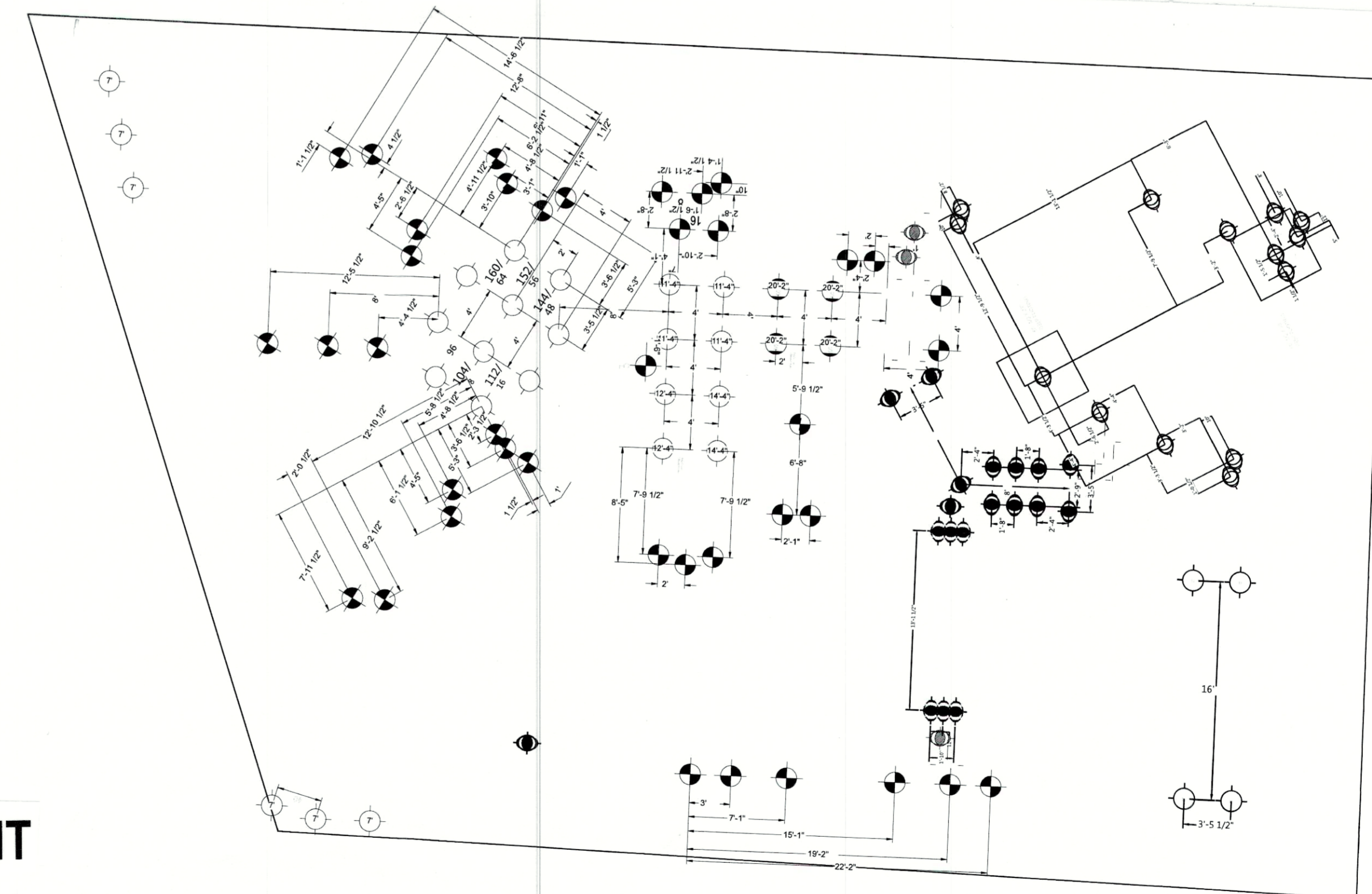
Equipment	Type	ADA Type	Location	Quantity
Plano Panel	Activity Panel	Ground	Independent	1
Beat Blocks	Activity Panel	Ground	Independent	1
Beat Bubble	Activity Panel	Ground	Independent	1
General Store and Valance	Activity Panel	Ground	Under Sky Tower	1
Tic-Tac-Toe	Activity Panel	Transfer	In Sky Tower	1
Volcano Panel	Activity Panel	Transfer	In Sky Tower	1
Animal Sounds	Activity Panel	Transfer	In Sky Tower	1
Mountain Climber	Activity Panel	Transfer	In Sky Tower	1
Monkey Lean out Seat	Activity Panel	Transfer	Top of Slalom Slide	2
Bubble Panel	Activity Panel	Transfer	In Sky Tower	1
Bongo Panel	Activity Panel	Ground	Independent	1
Melody Maker	Activity Panel	Ground	Independent	1
Stand-N-Spin	Spinner	Ground	Independent	1
Sway Net	Climber	Ground	Linking	7
Stepping Stones	Balance	Ground	Linking	4
Pogo Pod	Swing	Ground	Independent	1
Tire Swing	Balance	Ground	Independent	1
Grand Canyon	Slide	Transfer	Sky Tower	2
Tunnel Slide	Slide	Transfer	Sky Tower	2
Hypersonic Slide	Slide	Transfer	Sky Tower	2
Plank Bridge	Bridge	Transfer	Sky Tower	2
Sliding Pole	Overhead Climber	Transfer	KB Deck	2
Cylinder Climber	Climber	Transfer	KB Deck	2
Slalom Slide	Slide	Transfer	KB Deck	2
Balcony Deck	Lookout	Transfer	KB Deck	1
Steel Seat	Activity Panel	Ground	KB Deck	1
Bumpy Climber	Bridge	Transfer	KB Deck	1
Diamond Climber	Net Climber	Transfer	KB Deck	1
Double Slide	Slide	Transfer	KB Deck	1
Rock Wall	Climber	Transfer	KB Deck	2
Leg Lift	Over Head Climber	Ground	KB Deck	1
Quad Rope Tower	Rope Climber	Transfer	KB Deck	1
Banister Rails	Overhead Climber	Ground	Hy Par	1
Fun wheel	Overhead Climber, Spinner	Transfer	Hy Par	1
Cylinder Climber	Climber	Ground	Hy Par	1
Net climber	Rope Climber	Ground	Hy Par	1
tire Climber	Climber, Spinner	Transfer	Hy Par	1
Hammock	Climber	Transfer	Hy Par	1
Loop Rail	Overhead Climber	Ground	Independent	1
Hoop Alley	Bridge	Ground	Independent	1

LIST - PLAYSTRUCTURES EQUIPMENT



PLAY STRUCTURES - PLAN

SCALE: 1/8" = 1'-0"



FOOTINGS FOR PLAY STRUCTURES - PLAN

SCALE: 1/8" = 1'-0"

Project:
CITY OF WALTHAM

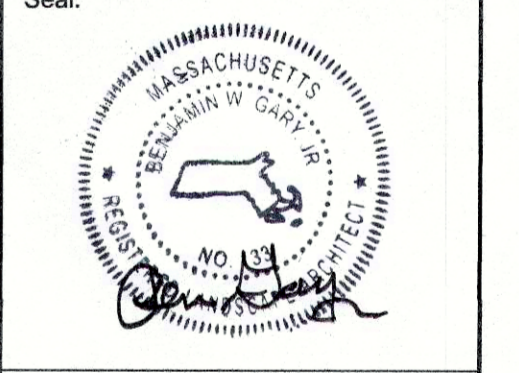
MacArthur School
Playground

MG
Marshall | Gary LLC
17 Naumkeag Row
Danvers, MA 01923
p. 781.245.7699 c. 617.699.6644
www.mgary.com

Consultants:

Revisions:

Rev	Date	Description



FOR CONSTRUCTION

Date: 8-30-17
Scale: As Shown
Drawn By: JE
Reviewed By:
Checked By: BG
Approved By: BG

Drawing Title:
PLAYGROUND ENLARGEMENT & INSTALLATION DETAILS

Sheet Number:
L-5