

THE CITY OF WALTHAM
MASSACHUSETTS
PURCHASING DEPARTMENT

Trapelo Road Water Services, 2018

ADDENDUM NO. 1

November 30th, 2018

CHANGES, CORRECTIONS AND CLARIFICATIONS

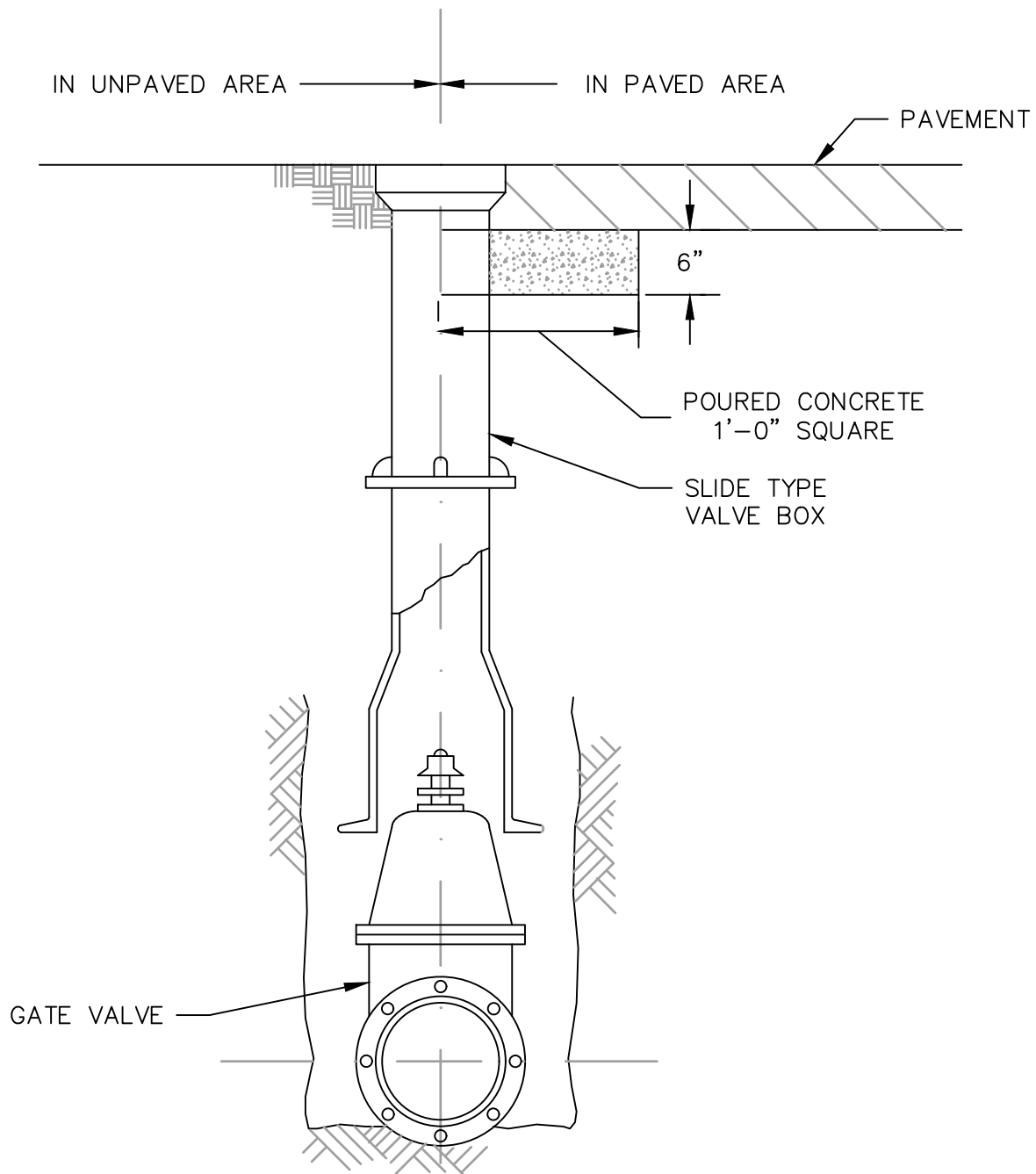
The attention of bidders submitting proposals for the above subject project is called to the following addendum to the specifications. The items set forth herein, whether of omission, addition, substitution or clarification are all to be included in and form a part of the proposal submitted.

THE NUMBER OF THIS ADDENDUM (NO. 1) MUST BE ACKNOWLEDGED IN SECTION Bid Price Form Page.

ITEM 1: ANSWERS TO POSED QUESTIONS

- Q1.** Please provide Hydrant replacement locations.
A1. *All hydrants on Trapelo Rd from Smith St to Lexington St are planned to be replaced. Hydrants are shown on the plan sheets*
- Q2.** Please provide gate valve replacement locations.
A2. *Gate valves will be replaced as needed at the digression of inspectors. It is assumed that a portion of existing hydrant gate valves will need to be replaced.*
- Q3.** Is the 6" DI water main item for the replacement of hydrants and gate valves.
A3. *Yes*
- Q4.** Can you supply standard detail drawings for the following:
a. Water Service replacement
A4-a. *See Attached detail W-7 Typical Water Service*
b. Sewer Service replacement
A4-b. *See Attached detail S-3 Sewer Service Detail*
c. Hydrant replacement
A4-c. *See Attached detail W-5 Typical Fire Hydrant*
d. Gate valve replacement
A4-d. *See Attached detail W-1 Gate Valve and Box*
- Q5.** What is the thickness of the existing asphalt on Trapelo Road.
A5. *Unknown but assumed to be greater than 5"*
- Q6.** Will excavations require CDF backfill on Trapelo Road.
A6. *No, the quantity of CDF in the bid will be used at the inspectors digression if there is a utility conflict that may prevent proper compaction of the backfill*
- Q7.** Do the existing water service corporations have lead goosenecks.
A7. *Yes, most if not all of the water services to be replaced have lead goosenecks.*
- Q8.** What is the existing water service replacement pipe material.
A8. *Most if not all of services planned to be replaced are iron on the city side. Most will also be iron on private side but some may be copper.*

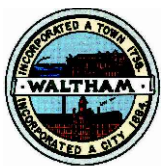
End of Addendum 1



NOTE:

1. ALL VALVES MUST OPEN RIGHT
2. ALL VALVES TO BE MANUFACTURED BY MUELLER CO.

DWG FILE: S:\Standard Details\Details W.1 - Gate Valve and Box.dwg



CITY OF WALTHAM, MA
ENGINEERING DEPARTMENT

STANDARD DETAILS

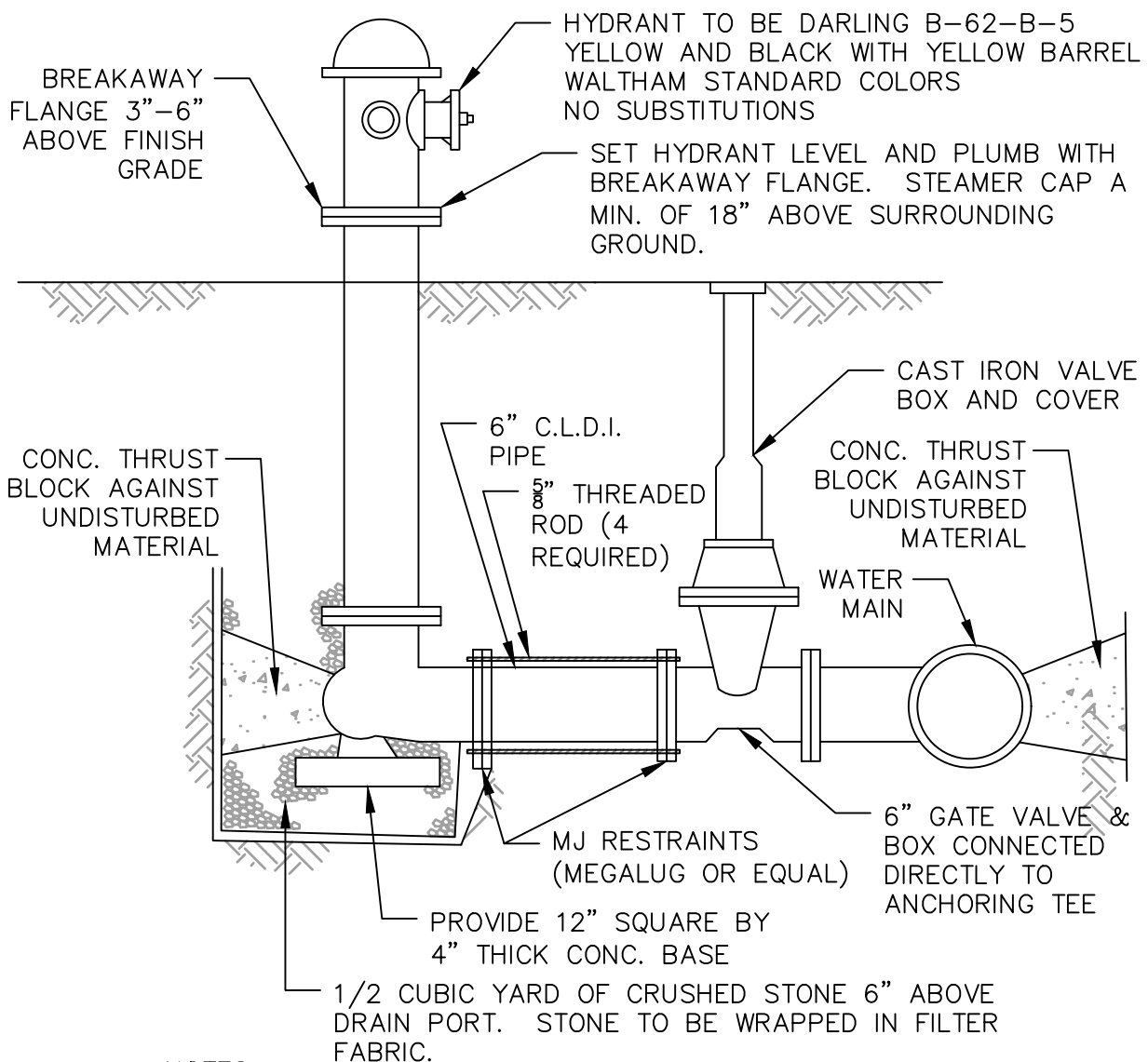
DETAIL NO:
W.1

WATER

SCALE:
N.T.S.

GATE VALVE AND BOX

REV. DATE:
MAY 2017



NOTES:

1. HYDRANT VALVE AND TEE SHALL BE RODDED TOGETHER.
2. ALL VALVES OPEN RIGHT
3. ALL HYDRANTS SHALL BE PLACED AT BACK OF SIDEWALK WHERE POSSIBLE WITH HYDRANT MARKER.

TYPICAL FIRE HYDRANT DETAIL
N.T.S.

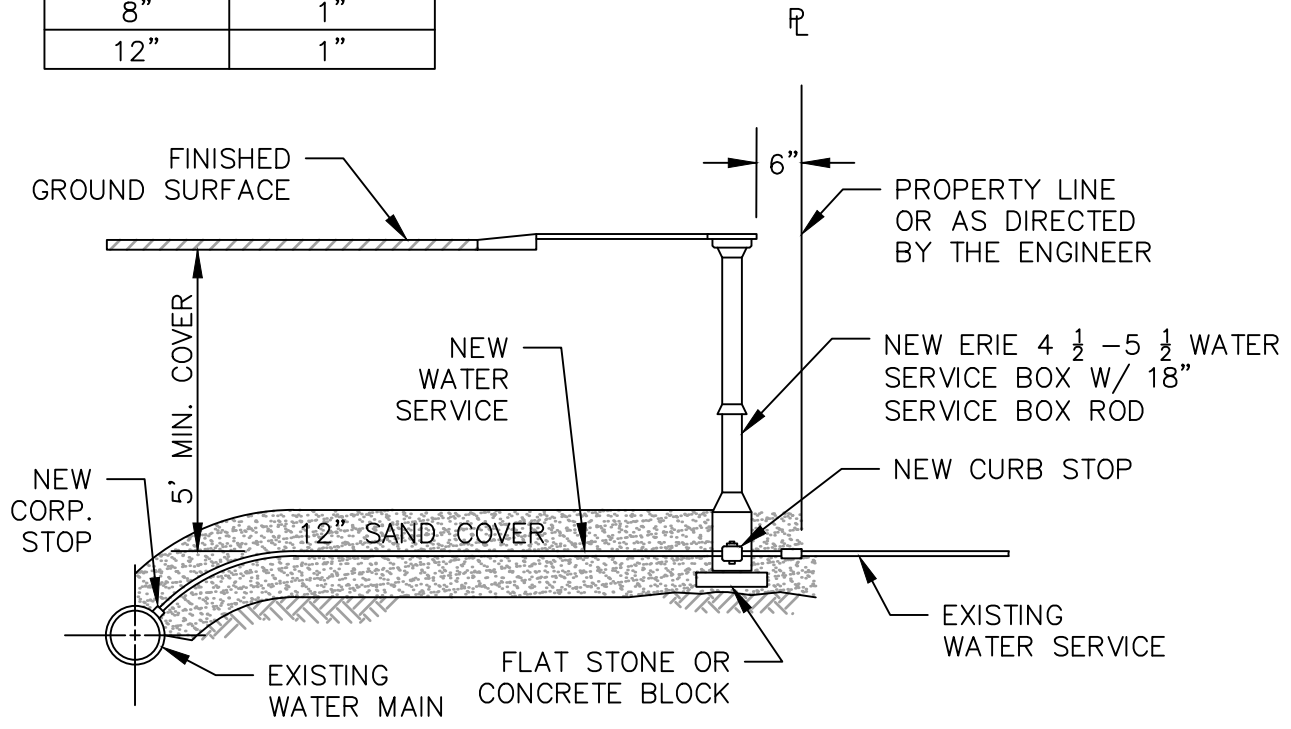
DWG FILE: S:\Standard Details\Details W.5 - Typical Fire Hydrant.dwg



CITY OF WALTHAM, MA
ENGINEERING DEPARTMENT

STANDARD DETAILS	DETAIL NO: W.5
WATER	SCALE: N.T.S.
TYPICAL FIRE HYDRANT	REV. DATE: MAY 2017

WATER MAIN DIAMETER	MAXIMUM TAP DIAMETER
4"	1/2"
6"	3/4"
8"	1"
12"	1"



NOTES:

1. ALL WATER SERVICES SHALL BE 1" DIA. TYPE K COPPER TUBING UNLESS OTHERWISE NOTED. SERVICE SHALL BE ONE CONTINUOUS LENGTH FROM MAIN TO CURB STOP.
2. ALL WATER SERVICES SHALL BE REPLACED UP TO THE RIGHT OF WAY
3. WHERE THE SIZE OF THE CONNECTION EXCEEDS THAT GIVEN IN THE TABLE, THE CONNECTION SHALL BE MADE MEANS OF A TAPPED SADDLE OR TEE CONNECTION.
4. WHERE GATE BOX IS NEAR OBSTRUCTION SUCH AS FENCE OR WALL, PLACE TO ALLOW SUFFICIENT ROOM TO OPERATE VALVE WITH WRENCH.
5. REMOVE AND DISPOSE OF EXISTING PIPE AND GATE BOX.

TYPICAL WATER SERVICE



CITY OF WALTHAM, MA
ENGINEERING DEPARTMENT

STANDARD DETAILS

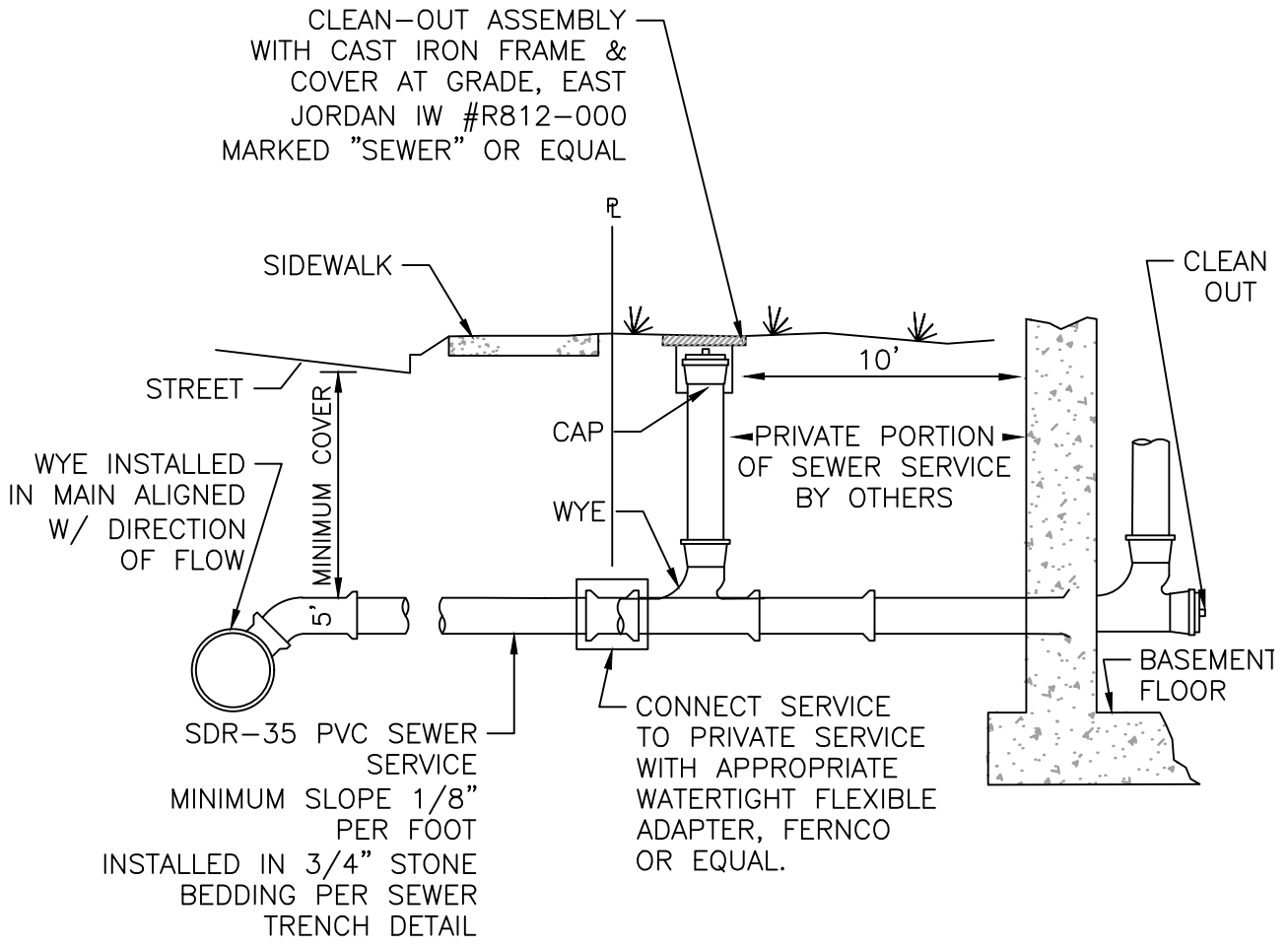
WATER

TYPICAL WATER SERVICE

DETAIL NO:
W.7

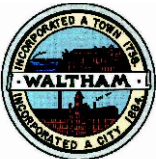
SCALE:
N.T.S.

REV. DATE:
MAY 2017



SEWER SERVICE DETAIL
N.T.S.

DWG FILE: S:\CAD\Standard Details\Details\S.3 Sewer Service Detail.dwg



CITY OF WALTHAM, MA
ENGINEERING DEPARTMENT

STANDARD DETAILS	DETAIL NO: S.3
SEWER	SCALE: N.T.S.
SEWER SERVICE DETAIL	REV. DATE: MAY 2017