

May 18, 2012

MCDEVITT MIDDLE SCHOOL FLOOR REPLACEMENT PHASE II
MCDEVITT MIDDLE SCHOOL
75 CHURCH STREET
WALTHAM, MASSACHUSETTS 02452

ADDENDUM #1

The attention of bidder submitting proposals for the above named project is called to the following addenda to the drawings and specifications. Revisions designed as Addendum items set forth herein, whether of omission, addition or substitution, supersede specific parts of the documents described herein and are to be included in and form part of the drawings for the above named project.

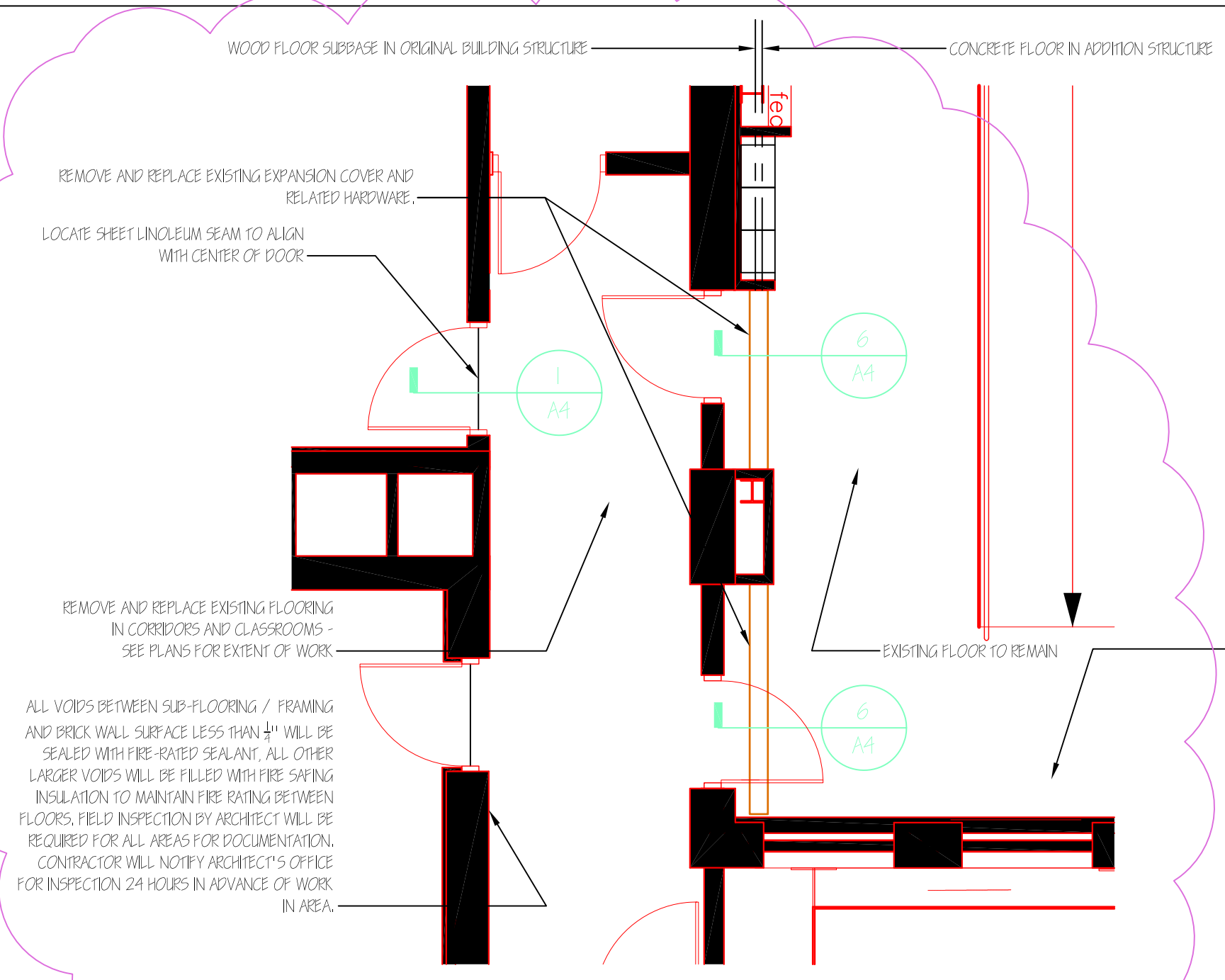
ITEMS APPLICABLE TO THE SPECIFICATIONS:

1. Project Manual, dated 30 April, 2012, Section 09516.13 – 2.2; add Paragraph, “D. Manufacturer, Forbo Flooring, NA, has frozen price of material based upon prices available and quoted per June 2011 quoted prices. Contractors are encouraged to contact Mr. Scott Relihan, New England Division Manager, Forbo Flooring NA, 617-828-7501 for additional information.”

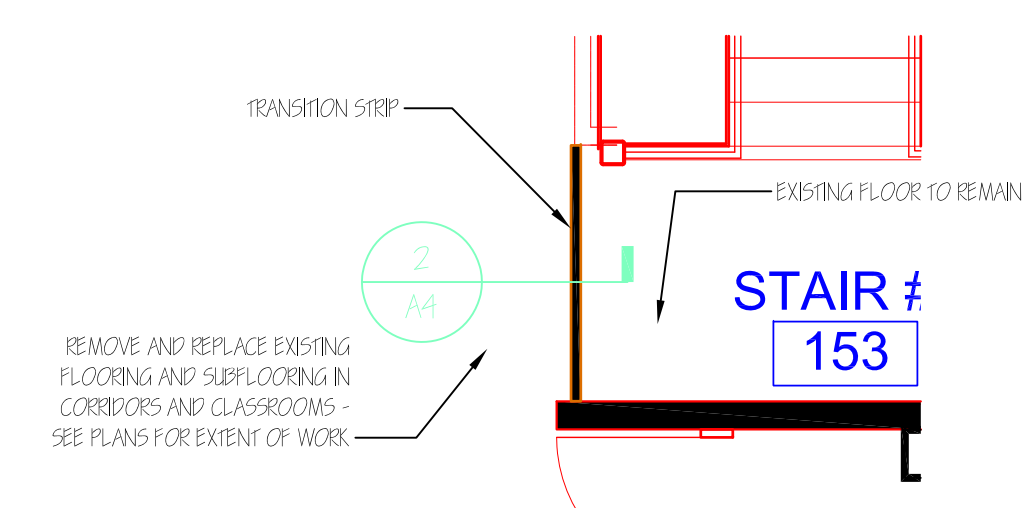
ITEMS APPLICABLE TO THE DRAWINGS:

1. Drawing A-4, dated April 30, 2012, revised by Addendum #1, dated 5/18/2012, Clouded revisions to notes for various details referencing new vinyl base and fire rating protection for clarification details 4 & 5 and partial plan A. See attached drawing A-4 in entirety for clarification.

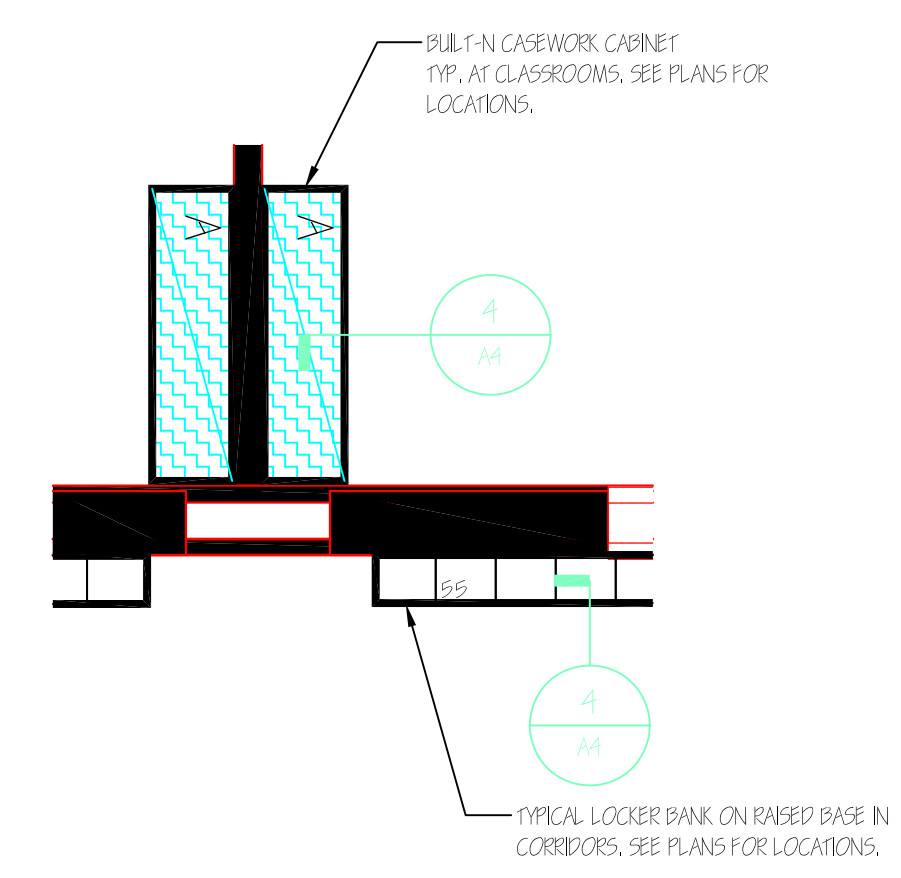
END OF ADDENDUM # 1



A PARTIAL PLAN AT FLOOR EXPANSION JT
1/4"=1'-0"

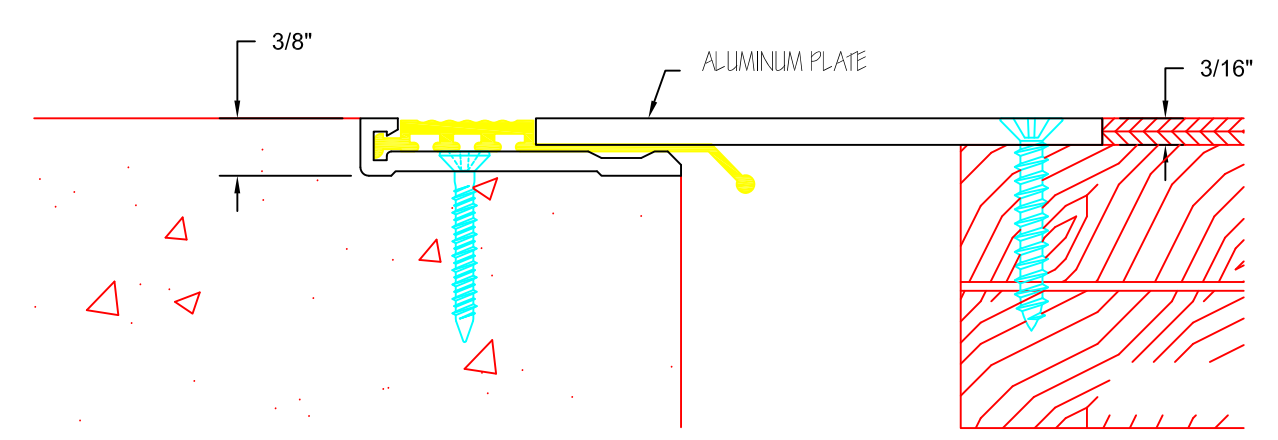


B PARTIAL PLAN AT FLOOR TRANSITION
1/4"=1'-0"



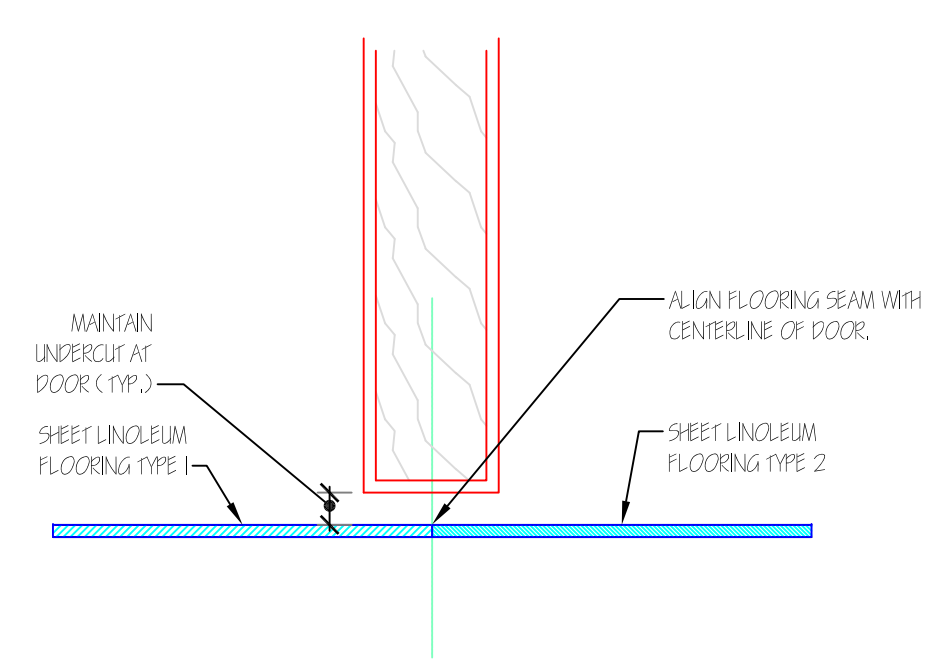
C PARTIAL PLAN AT FLOOR / BASE TRANSITION
1/4"=1'-0"

BALCO - 1420
FLOOR SYSTEM (INTERIOR ONLY)
MILL FINISH ALUMINUM COVER
MILL FINISH ALUMINUM BASE
50% MOVEMENT
GRAY COLOR.

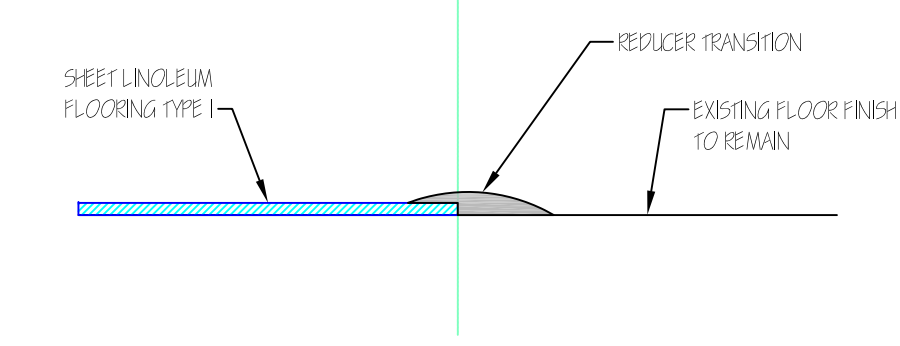


ALUMINUM PLATE EXPANSION JOINT TO SPAN GAP BETWEEN WOOD FLOOR OF ORIGINAL BUILDING AND CONCRETE FLOOR OF NEW ADDITION. VERIFY ACTUAL CONDITION IN FIELD. DETAIL SHOWN IS AN EXAMPLE OF THE CONDITION ONLY AND DOES NOT REPRESENT THE ACTUAL CONDITION.

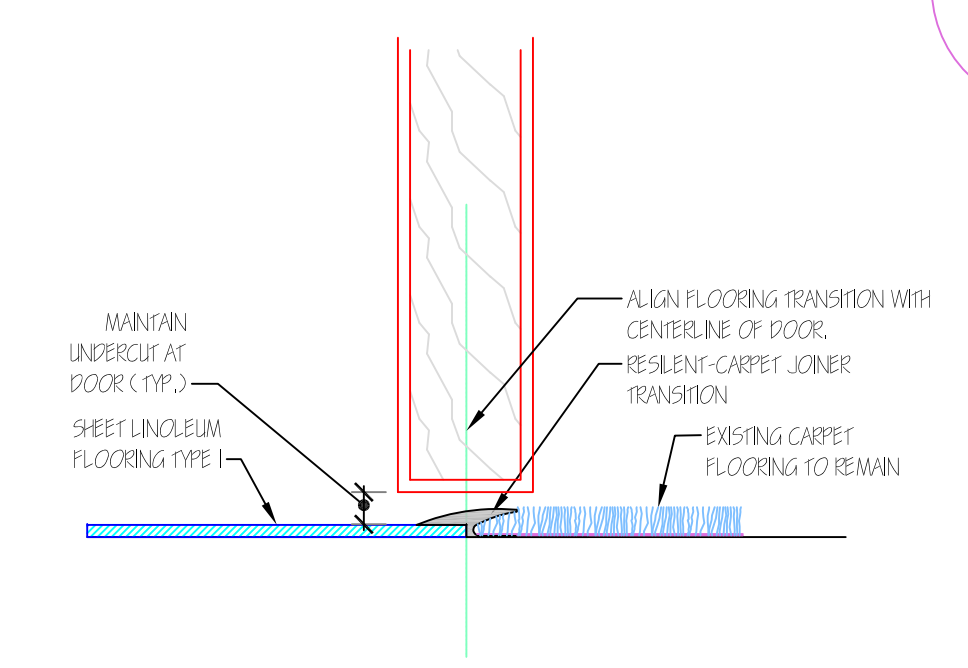
6 DETAIL AT FLOOR EXPANSION JT
NONE



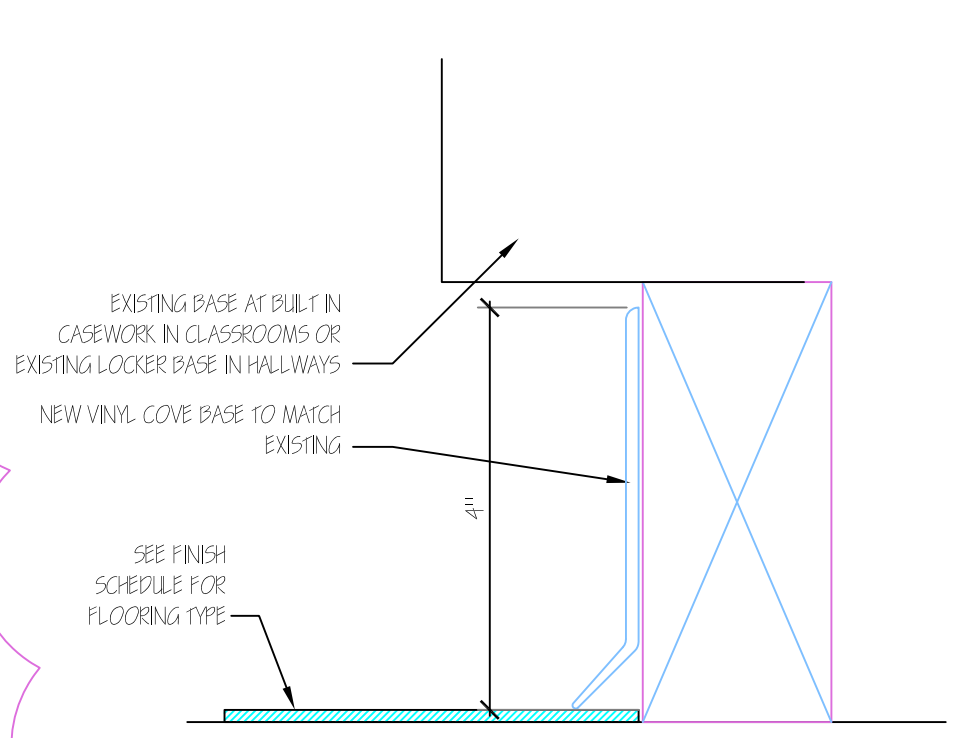
1 DETAIL AT FLOOR SEAM
NONE



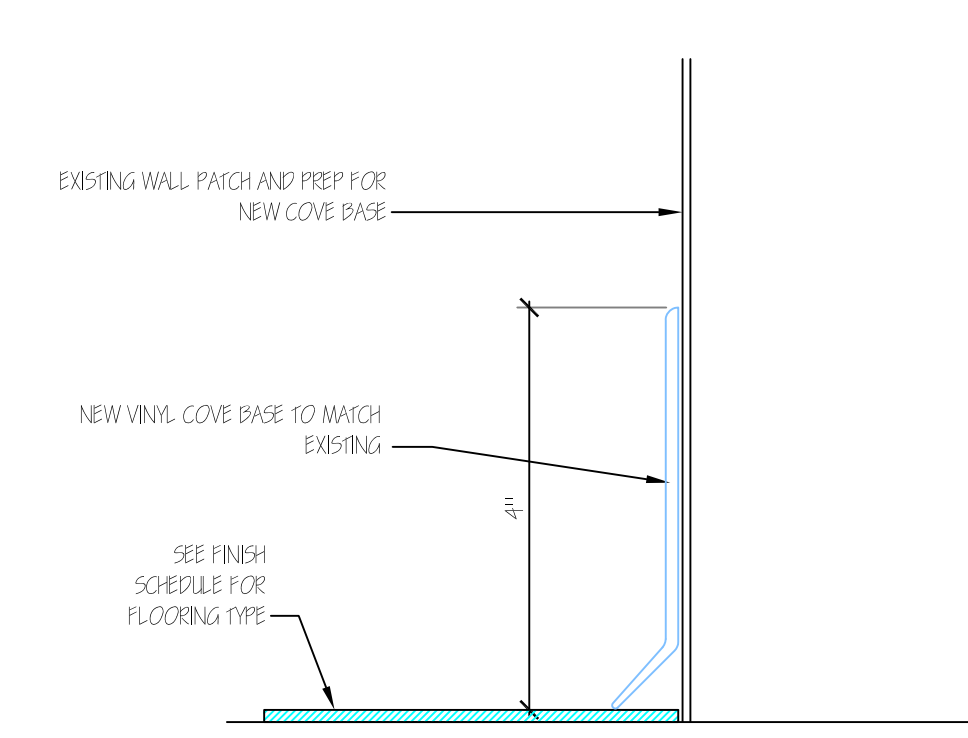
2 FLOOR TRANSITION DETAIL
NONE



3 FLOOR TRANSITION DETAIL
NONE



4 FLOOR / BASE TRANSITION DETAIL
NONE



5 FLOOR / BASE TRANSITION DETAIL
NONE

APPENDIX #1		5/18/2012
REV. #	DESCRIPTION	REV. DATE
1		REV. BY: BR
		SCALE: AS NOTED
		DATE: APRIL 30, 2012
PROJECT: FLOOR REPLACEMENT - THIRD FLOOR LEVEL MCDONNELL MIDDLE SCHOOL 79 CHURCH STREET WALTHAM, MA 02452		DRAWING NUMBER: A4
DRAWING TITLE: FLOORING DETAILS		JOB #:
<small>ALL WORK SHALL BE THE SOLE RESPONSIBILITY OF THE CONTRACTOR. THE ARCHITECT'S RESPONSIBILITY IS LIMITED TO THE DESIGN AND CONSTRUCTION OF THE WORK SHOWN ON THESE DRAWINGS. THE ARCHITECT SHALL NOT BE RESPONSIBLE FOR THE WORKMANSHIP OF THE CONTRACTOR OR THE WORKMANSHIP OF THE CONTRACTOR'S SUBCONTRACTORS.</small>		25-299