

Line	Floor	Room No.	Item No.	Physical Obstacle	ADA Code	Method/ Proposed Correction	Photo	Priority	Official Responsible	Schedule	Cost	Status	Comments
			0067	Water closet is centered at 18.5" (470 mm) from side wall.	\$604.2	Relocate water closet and center between 16" and 18" (406 mm - 457 mm) from side wall (2010 ADA Fig. 604.2).	0216	3	Sub-contractor	3	\$700.00		
			0068	Rear wall and side wall grab bar are mounted at 1.75" (44 mm) clear from the back wall.	\$609.3	Relocate/replace grab bar and mount at 1.5" (38 mm) clear from the back wall (2010 ADA Fig. 609.3).	0216	3	Sub-contractor	3	\$300.00		
			0069	Water closet rear wall grab bar is mounted at 37.25" (946 mm) above the finished floor to the top of the gripping surface.	\$604.5.2	Relocate rear wall grab bar and mount between 33" and 36" (838 mm - 914 mm) above the finished floor to the top of the gripping surface.	0216	3	Sub-contractor	3	\$0.00		Included in item No. 0068.
			0070	Water closet side wall grab bar is mounted at 36.75" (933 mm) above the finished floor to the top of the gripping surface.	\$604.5.1	Install a 42" (1066 mm) min. long side wall grab bar at 54" (1371 mm) min. from rear wall to centerline of outer flange and mount at 33"-36" (838 mm - 914 mm) above the finished floor to the top of the gripping surface (2010 ADA Fig. 604.5.1)	0216	3	Sub-contractor	3	\$0.00		Included in item No. 0068.
			0071	Trash can encroaches over the water closet clearance.	\$604.3.2	Relocate encroaching item to provide the required 60" by 56" (1524 mm by 1422 mm) min. clearance at water closet (2010 ADA Fig. 604.3.1).	0216	3	In-house	3	\$30.00		
0019	2nd	Shine Office	0072	Furniture encroaches over maneuvering clearance on the pull side of the door.	\$404.2.4	Relocate encroaching item to provide the required 18" (457 mm) min. maneuvering clearance on the pull side of the door (2010 ADA Fig. 404.2.4.1).	0218	2	In-house	2	\$30.00		

Line	Floor	Room No. Name	Item No.	Physical Obstacle	ADA Code	Method/ Proposed Correction	Photo	Priority	Official Responsible	Schedule	Cost	Status	Comments
0020	2nd	Computer Room	0073	Permanent room identifying signage is mounted on the door leaf.	\$703.4.1	Provide signage on latch side with raised characters and grade 2 Braille, mounted at 48 inches min. measured from the baseline of the lowest tactile character and 60 inches max. from the baseline of the highest tactile character (2010 ADA Fig. 703.4.1).	0219	2	In-house	2	\$30.00		
0021	2nd	Conference Room	0074	Permanent room identifying signage is mounted on the door leaf.	\$703.4.1	Provide signage on latch side with raised characters and grade 2 Braille, mounted at 48 inches min. measured from the baseline of the lowest tactile character and 60 inches max. from the baseline of the highest tactile character (2010 ADA Fig. 703.4.1).	0222	2	In-house	2	\$30.00		
0022	2nd	Hallway	0075	Clothes rod is mounted beyond required reach allowed for approach provided and is mounted at 60" (1524 mm) above the finished floor.	\$308.2.1	Lower or install accessible clothes rod at 48" (1219 mm) max. above the finished floor for forward approach to object (2010 ADA Fig. 308.2.1).	0223	4	In-house	3	\$60.00		
			0076	Shelf is mounted beyond required reach range for approach provided and is mounted at 63" (1600 mm) above the finished floor.	\$308.2.1	Lower or install accessible shelf at 48" (1219 mm) max. above the finished floor for forward (2010 ADA Fig. 308.2.1).	0223	4	In-house	3	\$60.00		
0023	2nd	Classroom	0077	Permanent room identifying signage is mounted on the door leaf.	\$703.4.1	Provide signage on latch side with raised characters and grade 2 Braille, mounted at 48 inches min. measured from the baseline of the lowest tactile character and 60 inches max. from the baseline of the highest tactile character (2010 ADA Fig. 703.4.1).	0224	2	In-house	2	\$30.00		

Line	Floor	Room No. Name	Item No.	Physical Obstacle	ADA Code	Method/ Proposed Correction	Photo	Priority	Official Responsible	Schedule	Cost	Status	Comments
			0078	Maneuvering clearance on the pull side of the door is 6.5" (165 mm).	\$404.2.4	Rework door side partition to provide the required 18" (457 mm) min. maneuvering clearance on the pull side of the door beyond the latch side and 60" (1524 mm) min. deep clear floor leveled area with slopes not exceeding 1:48 (2010 ADA Fig. 404.2.4.1).	0225	2	Sub-contractor	2	\$1,185.60		Reverse door swing.
			0079	Door has a non-compliant door opening force of 12 lbf.	\$404.2.9	Adjust or replace door closer, maintain door hinges to provide an opening force not to exceed 5 lbf.	0225	2	Sub-contractor	2	\$275.00		
			0080	Sink is mounted at 37.25" (946 mm) above the finished floor to top of rim.	\$804.4	Relocate and/or mount sink at 34" (863 mm) max. above the finished floor to top of rim.	0227	4	Sub-contractor	3	\$1,891.00		
0024	2nd	Activity Room	0081	Permanent room identifying signage is mounted on the door leaf.	\$703.4.1	Provide signage on latch side with raised characters and grade 2 Braille, mounted at 48 inches min. measured from the baseline of the lowest tactile character and 60 inches max. from the baseline of the highest tactile character (2010 ADA Fig. 703.4.1).	0228	2	In-house	2	\$30.00		
			0082	Sink is mounted at 36" (914 mm) above the finished floor to top of rim.	\$804.4	Relocate and/or mount sink at 34" (863 mm) max. above the finished floor to top of rim.	0230	4	Sub-contractor	3	\$1,891.00		
0025	Basement	Accessible Putting Green	0083	Access to the putting green has a 0.5" (13 mm) vertical change in level.	\$303.2	Rework area and provide a 0.25" (6 mm) max. vertical change of level, with a slope no greater than 1:2 (2010 ADA Fig. 303.2).	0235	4	Sub-contractor	3	\$300.00		

Report No. ECCOW613-1408

Line	Floor	Room No.	Item No.	Physical Obstacle	ADA Code	Method/ Proposed Correction	Photo	Priority	Official Responsible	Schedule	Cost	Status	Comments
	Priority:			Official Responsible					Schedule				Status
1	Entrance		1	A/E - Bid Package				1	FY: 2017-2018		\$7,650.00		Pending
2	Accessible Route		2	Sub-contractor				2	FY: 2018-2019		\$11,127.37		Complete
3	Restrooms		3	In-House				3	FY: 2019-2020		\$10,024.00		CIP/Bid
4	Programs & Services												
									Sub-Total		\$28,801.37		
									A/E Fees 10%		\$2,880.14		
									Total:		\$31,681.51		

Item	Observations
0002	There are 36 parking spaces in total and 3 are designated as accessible. Only 2 accessible parking spaces are required.
0003	CS1: 2.5%, CS2: 2.1%, CS3: 0.5%.
0005	CS1: 4.4%, CS2: 3.7%, CS3: 1.9%. Sidewalk is 6" high.
0006	Left sign mounted at 24" and right sign mounted at 37".
0008	RS1: 4.8%, RS2: 1.6%, RS3: 1.6%.
0009	CS1: 2.1%, CS2: 1.6%, CS3: 4.0%.
0010	Proposed correction is to relocate accessible parking space to the right side or eliminate this accessible parking space.
0015	RS1: 7.9%, RS2: 8.4%, RS3: 8.7%, RS4: 9.5%.
0039	Secondary urinal is mounted at 24" and it has a clear width of 27.5".
0055	Secondary stall is 33" wide.
0063	Staff Only.

GENERAL NOTES

1	State and local government facilities must follow the requirements of the 2010 standards, including both the Title II regulations at 28 CFR part 35.151; and the 2004 ADAAG at 36 CFR part 1191, appendices B and D.
2	Alterations to public facilities shall be made to ensure that to the maximum extent feasible, altered portions of the facility are readily accessible to persons with disabilities. If the facility chooses to alter elements compliant with 1991 ADA Standards of the Uniform Federal Accessibility Standards, it is necessary to meet the 2010 ADA standards to the maximum extent feasible.
3	State and local governments must provide program access, so that each service, program or activity when viewed in its entirety be readily accessible to persons with disabilities.
4	Alterations to historic properties shall comply to the maximum extent feasible with the provisions applicable to historic properties in the design standards specified in 35.151(c), but shall not threaten or destroy the historic significance of a historic property.
5	Full compliance with the requirements is not required where an entity can demonstrate that it is structurally impracticable to meet the requirements, such as when unique characteristics of the terrain prevent incorporation of accessibility features.
6	Public entities are not required to make each of its existing facilities accessible where this results in a fundamental alteration in the nature of the program, or in an undue financial and administrative burden.
7	Public entities may comply with the requirements through such means as reassignment of services to accessible buildings, assignment of aides to beneficiaries, home visits, delivery of services at alternate accessible sites, alteration of existing facilities and construction of new facilities, use of accessible rolling stock or other conveyances, or any other methods that result in making its services, programs, or activities readily accessible. In choosing which methods to utilize a public entity must give priority to the methods that offer access in the most integrated settings.
8	Elements in existing facilities built or altered in compliance with the 1991 ADA Standards or the Uniform Federal Accessibility Standards are not required to be modified to comply with the requirements set forth in the 2010 standards.
9	The 2010 standards, contain specific scoping and technical criteria required for Judicial Facilities, Detention Facilities and Correctional Centers, Residential Facilities, Amusement Rides, Recreational Boating Facilities, Exercise Machines and Equipment, Fishing Piers and Platforms, Golf Facilities, Miniature Golf Facilities, Play Areas, Saunas and Steam Rooms, Swimming Pools, Wading Pools, and Spas, Shooting Facilities with Firing Positions.
10	Where parking spaces are provided, parking spaces shall be provided in accordance with 208 (See table 208.2 Parking Spaces for minimum number required).
11	For every six or fraction of six parking spaces required by section 208.2 to comply with 502, at least one shall be a van parking space complying with 502.
12	Signage indicating accessible parking shall display the international symbol of accessibility and be mounted at 60" (1525) min. above the ground floor to the characters and symbols.
13	All accessible routes shall be stable, firm and slip resistant, and have a cross slope not exceeding 2%.
14	In existing sites ramp slopes shall be permitted to have running slopes steeper than 1:12 where such slopes are necessary due to space limitations. Slopes permitted are between 1:10 - 1:8 for a maximum rise of 3", and between 1:12 - 1:10 for a maximum rise of 6".
15	Wall mounted protruding objects mounted between 27"- 80" (685 mm -2032 mm) shall not project more than 4" (101 mm) from back wall to outer leading edge (ADA Fig. 307.2).
16	Except as noted, handrails shall be mounted on both sides of ramp between 34" - 38" (863 mm - 965 mm) above the finished floor to top of gripping surfaces. Handrails shall extend 12" (304 mm) min. beyond the top and bottom of the ramp segment and have a gripping surface of 1.25" to 2" (32 mm to 50 mm) with a space between the wall and the handrail of 1.5" (38 mm) (2010 ADA Fig. 405.9.1-2).
17	All doors that are part of an accessible route shall comply with 404, if doors provide user passage they shall comply with 404.2.3 providing a minimum clear opening of 32" (815 mm) with the door opened 90 degrees, measured between the face of the door and the opposite stop (2010 ADA Fig. 404.2.3).
18	All doors that are part of an accessible route shall have door hardware not requiring pinching, tight grasping or turning of the wrist to operate.
19	All doors that are part of an accessible route shall have door thresholds shall provide a 0.5" (12 mm) max. change of level, beveled with a slope no greater than 1:2 (2010 ADA Fig. 303.2).
20	Except as noted, tactile characters on interior signage shall be located at 48" (1370 mm) min. above the floor measured to the baseline of the lowest tactile character and 60" (1675 mm) max. above the finished floor measured from the baseline of the highest tactile character (2010 ADA Fig. 703.4.1).
21	All accessible bathrooms shall provide the required clear 60" (1524 mm) min. diameter wheelchair turnaround space or T-shaped space (2010 ADA Fig. 304.3.2).
22	Except as noted, all GRAB BARS shall have 1.25" - 2" (32 mm - 50 mm) diameter and be mounted at 33"- 36" (838 mm - 914 mm) above the finished floor to the top of gripping surfaces.
23	All accessible elements including, but not limited to storage, shelves, clothes rods, switches, outlets, thermostats, and fire extinguishers shall be mounted within reach ranges at 48" (1220 mm) max. above the finished floor for forward or side approach to object (2010 ADA Fig. 308.2.1-2). Shelves shall be mounted at 40" (1015 mm) min. above the finished floor.
24	The DOJ extended the compliance date for section 242 and 1009 of the 2010 ADA as they relate to the provision of accessible entry and exit to existing swimming pools, wading pools, and spas (pools built before March 15, 2012). The new provisions took effect on January 31, 2012.





IMG_0197



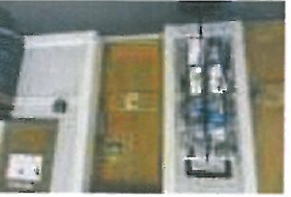
IMG_0198



IMG_0199



IMG_0200



IMG_0201



IMG_0202



IMG_0203



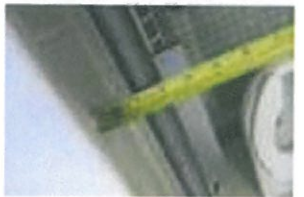
IMG_0204



IMG_0205



IMG_0206



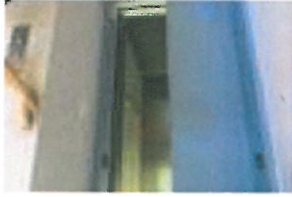
IMG_0207



IMG_0208



IMG_0209



IMG_0210



IMG_0211



IMG_0212



IMG_0213



IMG_0214



IMG_0215



IMG_0216



IMG_0217



IMG_0218



IMG_0219



IMG_0220



IMG_0221



IMG_0222



IMG_0223



IMG_0224



IMG_0225



IMG_0226



IMG_0227



IMG_0228



IMG_0229



IMG_0230



IMG_0231



IMG_0232



IMG_0233



IMG_0234

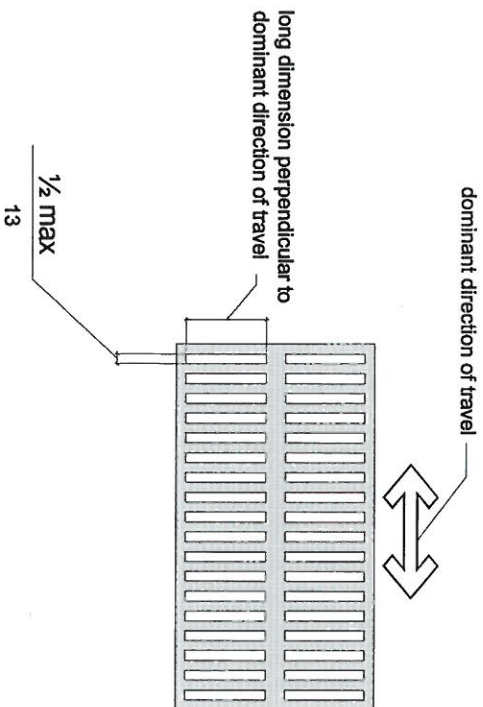


FIGURE 302.3
ELONGATED OPENINGS IN FLOOR OR GROUND SURFACES

* This graphic has been prepared by ADAAG Consulting Services, LLC for informational purposes only, with no warranty as to accuracy or to a particular set of circumstances.



ADAAG CONSULTING SERVICES, LLC

Architecture – Engineering – Construction
www.adaag-consulting.com 1-888-768-7788
Miami–New York–New Orleans–Dallas–Los Angeles

TITLE

ELONGATED OPENINGS IN FLOOR
OR GROUND SURFACES

N.T.S.

FIGURE NUMBER

302.3

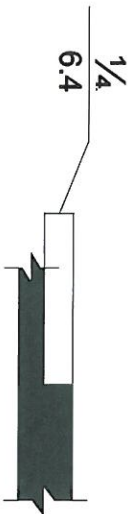


FIGURE 303.2
VERTICAL CHANGE IN LEVEL

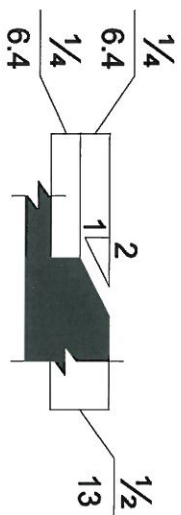


FIGURE 303.3
BEVELED CHANGE IN LEVEL

* This graphic has been prepared by ADAAG Consulting Services, LLC for informational purposes only, with no warranty as to accuracy or to a particular set of circumstances.



ADAAG CONSULTING SERVICES, LLC

Architecture – Engineering – Construction
www.adaag-consulting.com 1-888-768-7788
Miami–New York–New Orleans–Dallas–Los Angeles

TITLES

CHANGE IN LEVEL

N.T.S.

FIGURE NUMBERS

303.2
303.3



ADAAG CONSULTING SERVICES, LLC
Architecture - Engineering - Construction
www.adaag-consulting.com 1-888-768-7788
Miami-New York-New Orleans-Dallas-Los Angeles

MINIMUM CLEAR FLOOR
SPACE FOR WHEELCHAIRS

N.T.S.

FIGURE NUMBERS
305.3
305.5
305.7.1
305.7.2

* This graphic has been prepared by ADAAG Consulting Services, LLC for informational purposes only, with no warranty as to accuracy or to a particular set of circumstances.

FIGURE 305.7.1
MANEUVERING CLEARANCE IN
AN ALCOVE, FORWARD APPROACH

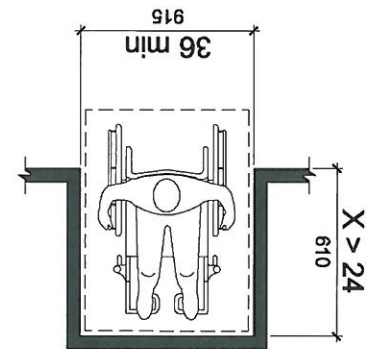


FIGURE 305.7.2
MANEUVERING CLEARANCE IN
AN ALCOVE, PARALLEL APPROACH

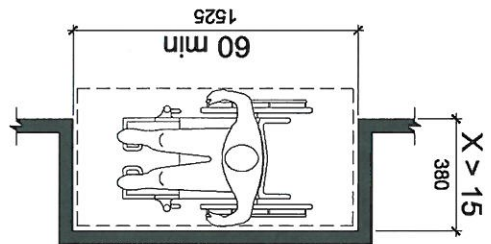
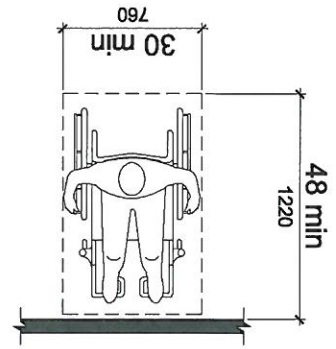


FIGURE 305.5
POSITION OF CLEAR FLOOR OR GROUND SPACE

(a)
forward



(b)
parallel

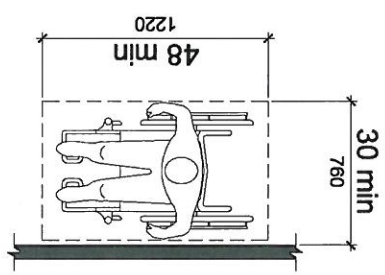
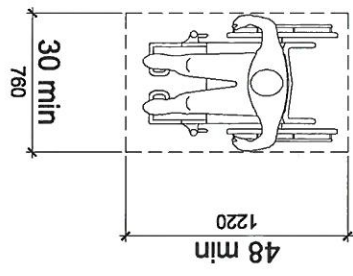


FIGURE 305.3
CLEAR FLOOR OR GROUND SPACE



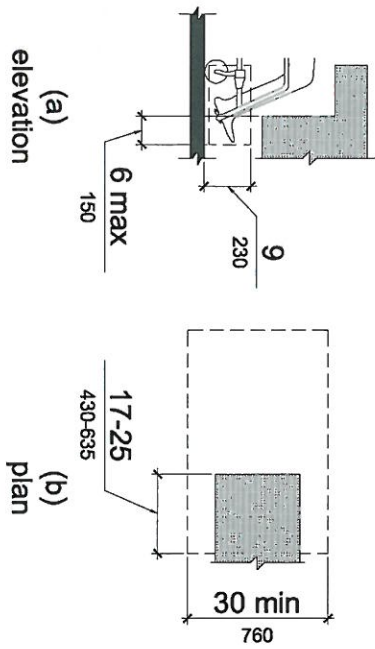


FIGURE 306.2
TOE CLEARANCE

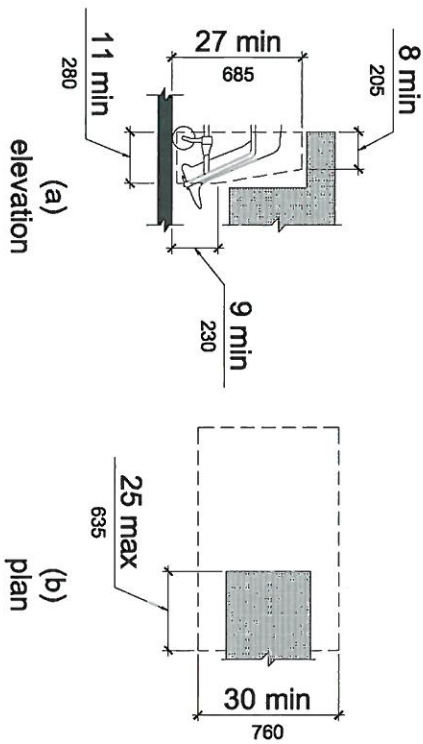


FIGURE 306.3
KNEE CLEARANCE

* This graphic has been prepared by ADAAG Consulting Services, LLC for informational purposes only, with no warranty as to accuracy or to a particular set of circumstances.



ADAAG CONSULTING SERVICES, LLC

Architecture – Engineering – Construction
www.adaag-consulting.com 1-888-768-7788
 Miami–New York–New Orleans–Dallas–Los Angeles

TITLE

TOE & KNEE CLEARANCE

N.T.S.

FIGURE NUMBERS

306.2
306.3

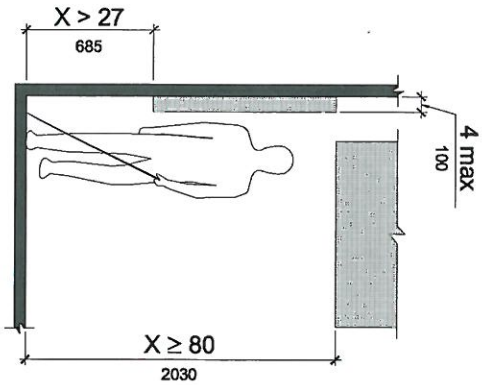


FIGURE 307.2
LIMITS OF PROTRUDING OBJECTS

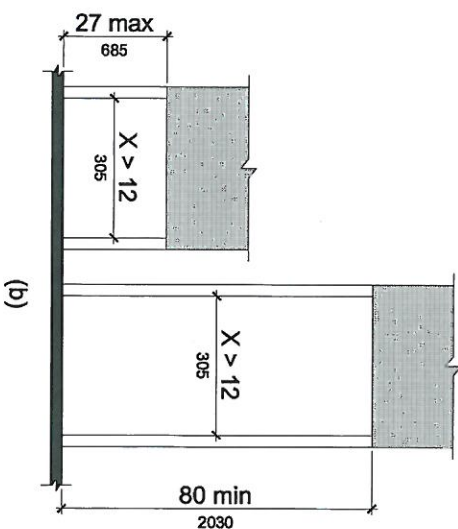
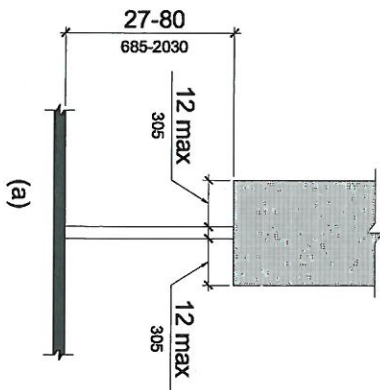


FIGURE 307.3
POST-MOUNTED PROTRUDING OBJECTS

* This graphic has been prepared by ADAAG Consulting Services, LLC for informational purposes only, with no warranty as to accuracy or to a particular set of circumstances.



ADAAG CONSULTING SERVICES, LLC

Architecture – Engineering – Construction
www.adaag-consulting.com 1-888-768-7788
Miami-New York-New Orleans-Dallas-Los Angeles

TITLE

PROTRUDING OBJECTS

N.T.S.

FIGURE NUMBERS

307.2
307.3



ADAAG CONSULTING SERVICES, LLC
Architecture - Engineering - Construction
www.adaag-consulting.com 1-888-768-7788
Miami-New York-New Orleans-Dallas-Los Angeles

FORWARD & SIDE REACH

N.T.S.

FIGURE NUMBERS
308.2.1
308.2.2
308.3.1
308.3.2

* This graphic has been prepared by ADAAG Consulting Services, LLC for informational purposes only, with no warranty as to accuracy or to a particular set of circumstances.

FIGURE 308.2.1
UNOBSTRUCTED FORWARD REACH

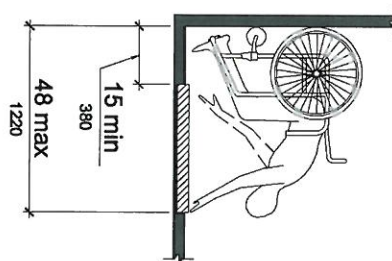


FIGURE 308.2.2
OBSTRUCTED HIGH FORWARD REACH

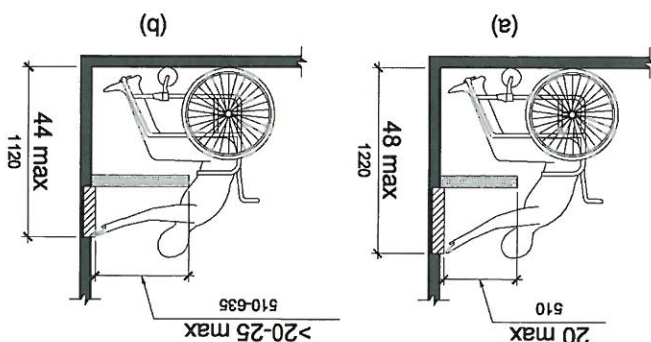


FIGURE 308.3.1
UNOBSTRUCTED SIDE REACH

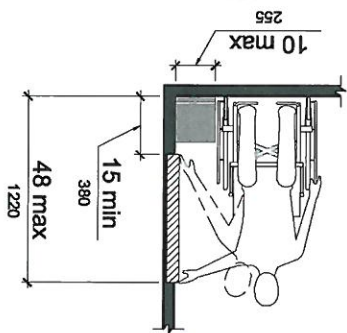
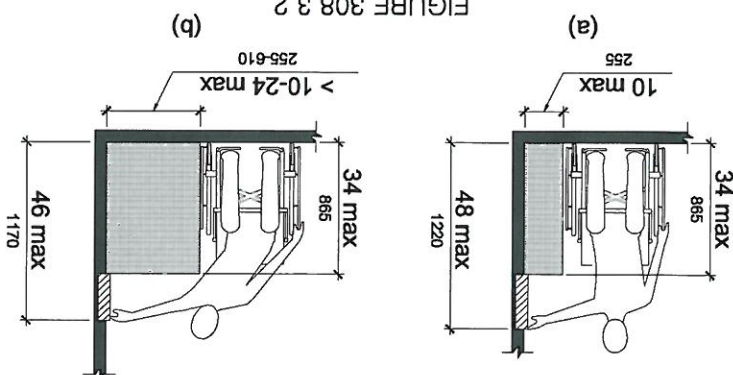


FIGURE 308.3.2
OBSTRUCTED HIGH SIDE REACH





ADAAG CONSULTING SERVICES, LLC
Architect - Engineering - Construction
www.adaag-consulting.com 1-888-768-7788
Miami-New York-New Orleans-Dallas-Los Angeles

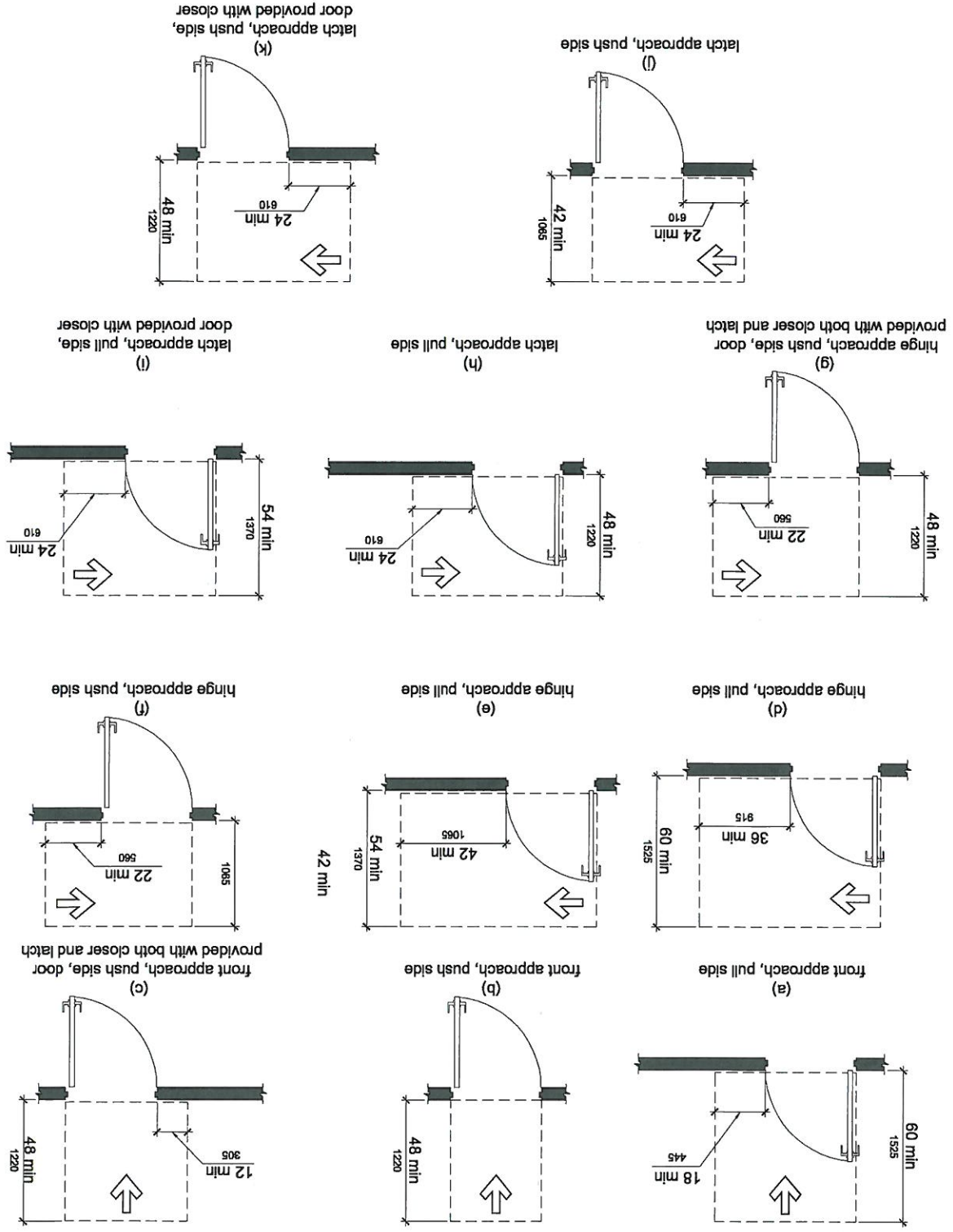
MANEUVERING CLEARANCES

N.T.S.

404.2.4.1

FIGURE NUMBER

FIGURE 404.2.4.1
MANEUVERING CLEARANCES AT MANUAL SWINGING DOORS AND GATES



* This graphic has been prepared by ADAAG Consulting Services, LLC for informational purposes only, with no warranty as to accuracy or to a particular set of circumstances.

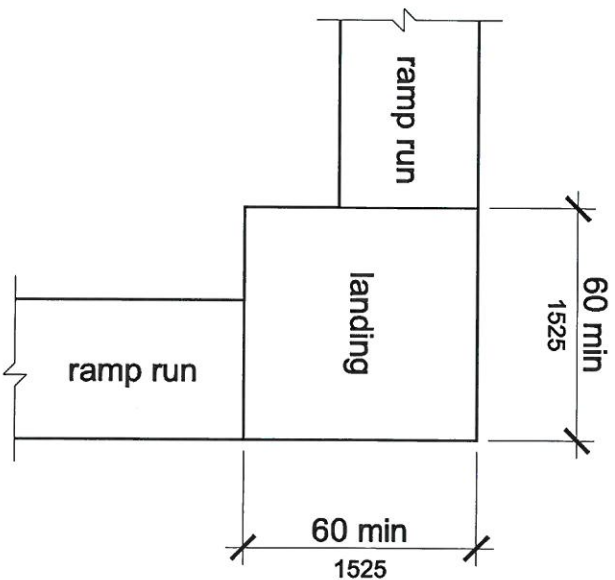
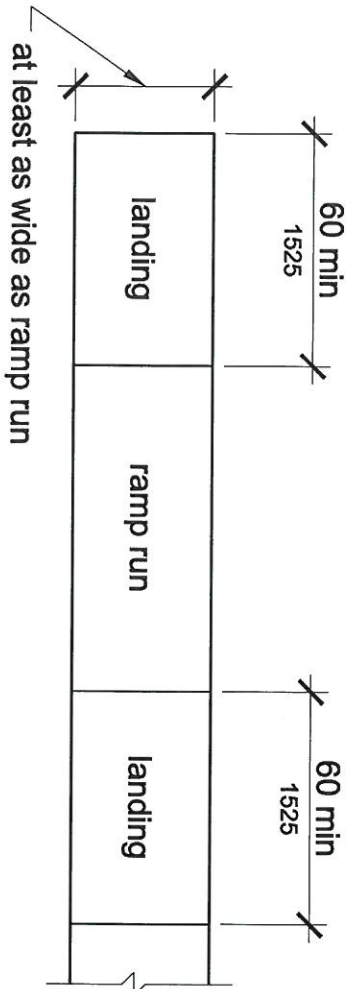


FIGURE 405.7
RAMP LANDINGS

* This graphic has been prepared by ADAAG Consulting Services, LLC for informational purposes only, with no warranty as to accuracy or to a particular set of circumstances.



ADAAG CONSULTING SERVICES, LLC

Architecture – Engineering – Construction
www.adaag-consulting.com 1-888-768-7788
Miami-New York-New Orleans-Dallas-Los Angeles

TITLE

RAMP LANDINGS

N.T.S.

FIGURE NUMBER

405.7

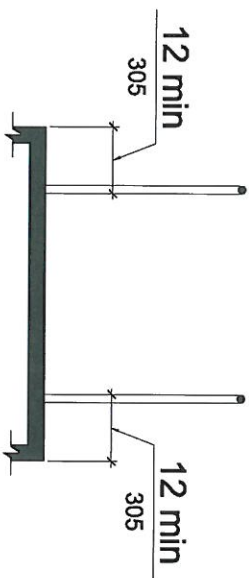


FIGURE 405.9.1
EXTENDED FLOOR OR GROUND SURFACE EDGE PROTECTION

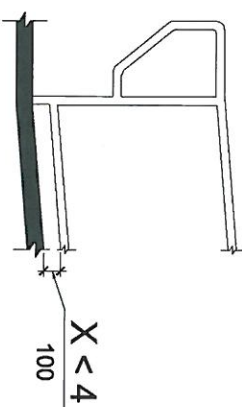


FIGURE 405.9.2
CURB OR BARRIER EDGE PROTECTION

* This graphic has been prepared by ADAAG Consulting Services, LLC for informational purposes only, with no warranty as to accuracy or to a particular set of circumstances.



ADAAG CONSULTING SERVICES, LLC

Architecture – Engineering – Construction
www.adaag-consulting.com 1-888-768-7788
Miami–New York–New Orleans–Dallas–Los Angeles

TITLE

EDGE PROTECTION

FIGURE NUMBERS

405.9.1
405.9.2

N.T.S.



ADAAG CONSULTING SERVICES, LLC
Architecture - Engineering - Construction
www.adaag-consulting.com 1-888-768-7788
Miami-New York-New Orleans-Dallas-Los Angeles

PARKING SPACES
& LOADING ZONES

N.T.S.

FIGURE NUMBERS
502.2
502.3
503.3

* This graphic has been prepared by ADAAG Consulting Services, LLC for informational purposes only, with no warranty as to accuracy or to a particular set of circumstances.

FIGURE 503.3
PASSENGER LOADING ZONE ACCESS AISLE

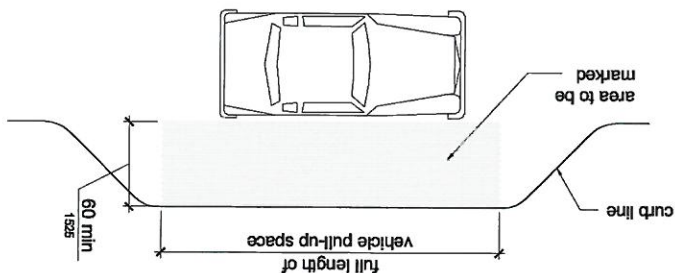


FIGURE 502.3
PARKING SPACE ACCESS AISLE

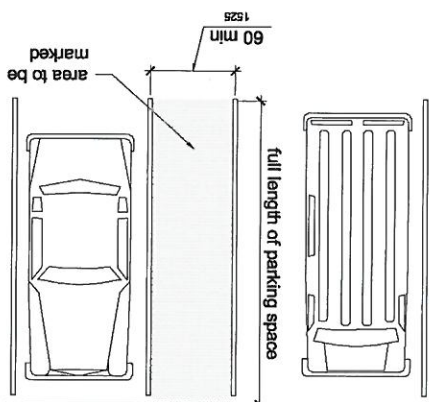
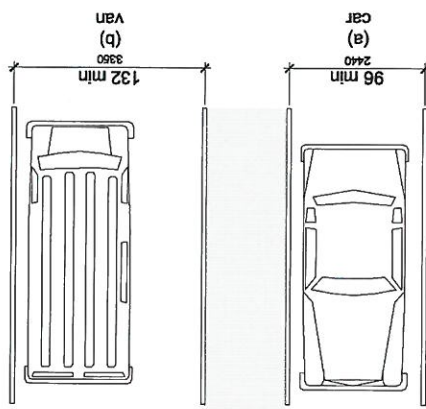


FIGURE 502.2
VEHICLE PARKING SPACES



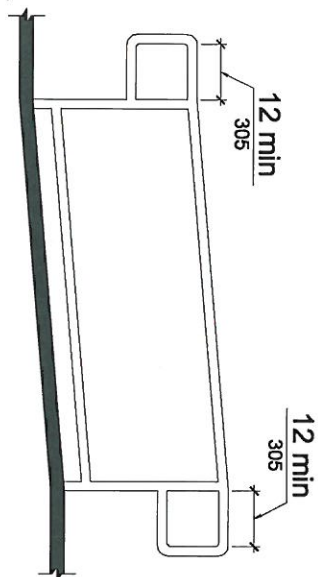


FIGURE 505.10.1
TOP AND BOTTOM HANDRAIL EXTENSION AT RAMPS

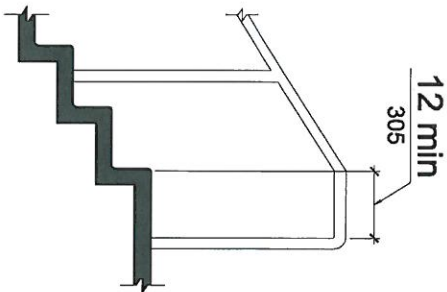


FIGURE 505.10.2
TOP HANDRAIL EXTENSION AT STAIRS

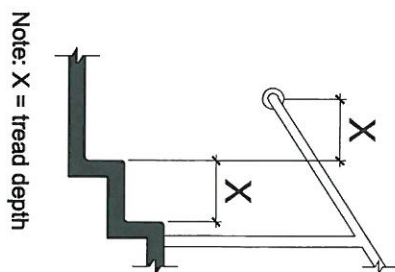


FIGURE 505.10.3
BOTTOM HANDRAIL EXTENSION AT STAIRS

* This graphic has been prepared by ADAAG Consulting Services, LLC for informational purposes only, with no warranty as to accuracy or to a particular set of circumstances.



ADAAG CONSULTING SERVICES, LLC

Architecture – Engineering – Construction
www.adaag-consulting.com 1-888-768-7788
Miami–New York–New Orleans–Dallas–Los Angeles

TITLE

HANDRAIL EXTENSIONS

N.T.S.

FIGURE NUMBERS

505.10.1
505.10.2
505.10.3

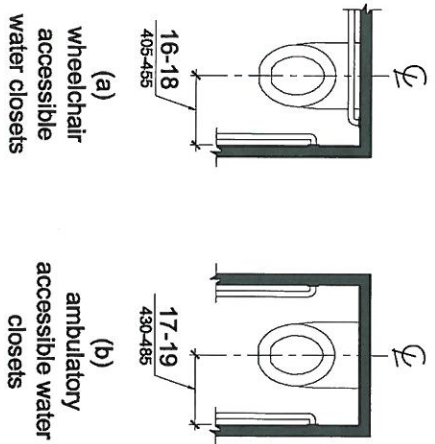


FIGURE 604.2
WATER CLOSET LOCATION

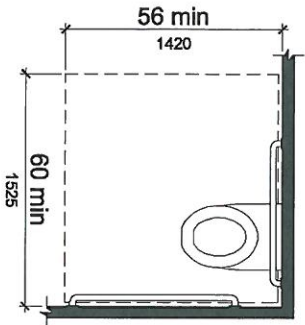


FIGURE 604.3.1
SIZE OF CLEARANCE AT WATER CLOSET

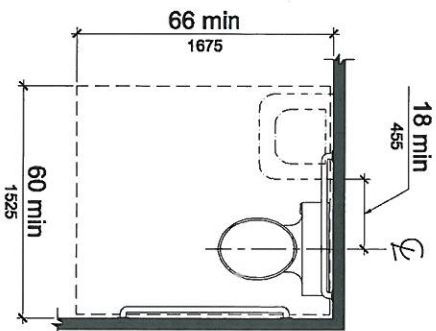


FIGURE 604.3.2 (EXCEPTION)
OVERLAP OF WATER CLOSET CLEARANCE
IN RESIDENTIAL DWELLING UNITS

* This graphic has been prepared by ADAAG Consulting Services, LLC for informational purposes only, with no warranty as to accuracy or to a particular set of circumstances.



ADAAG CONSULTING SERVICES, LLC

Architecture – Engineering – Construction
www.adaag-consulting.com 1-888-768-7788
Miami–New York–New Orleans–Dallas–Los Angeles

TITLE

WATER CLOSETS

N.T.S.

FIGURE NUMBERS

604.2
604.3.1
604.3.2

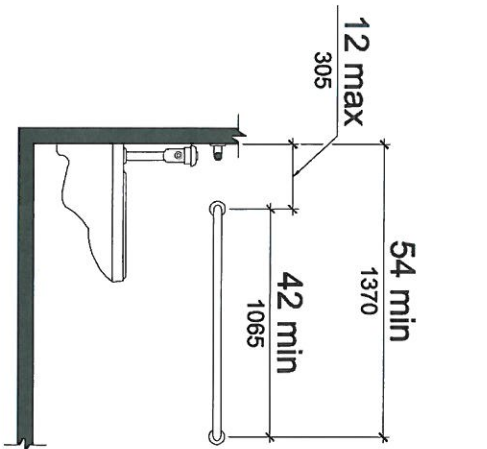


FIGURE 604.5.1
SIDE WALL GRAB BAR
AT WATER CLOSETS

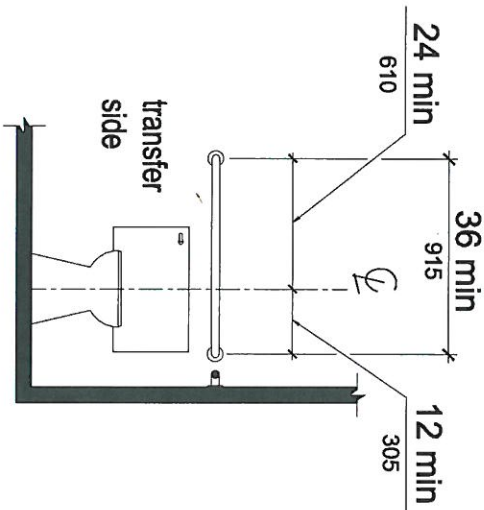


FIGURE 604.5.2
REAR WALL GRAB BAR
AT WATER CLOSETS

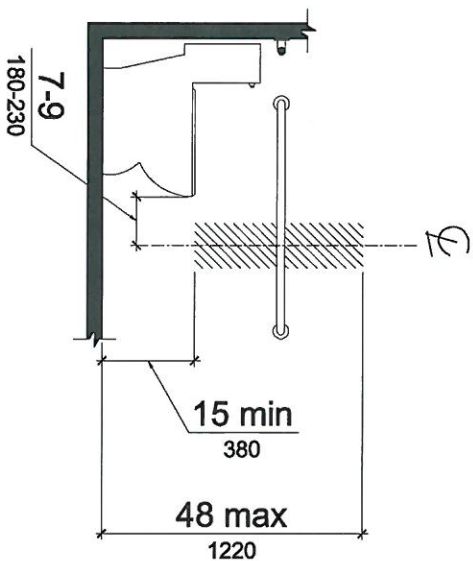


FIGURE 604.7
DISPENSER
OUTLET LOCATION

* This graphic has been prepared by ADAAG Consulting Services, LLC for informational purposes only, with no warranty as to accuracy or to a particular set of circumstances.



ADAAG CONSULTING SERVICES, LLC

Architecture – Engineering – Construction
www.adaag-consulting.com 1-888-768-7788
Miami–New York–New Orleans–Dallas–Los Angeles

TITLE

WALL GRAB BAR &
DISPENSER OUTLET

N.T.S.

FIGURE NUMBERS

604.5.1
604.5.2
604.7

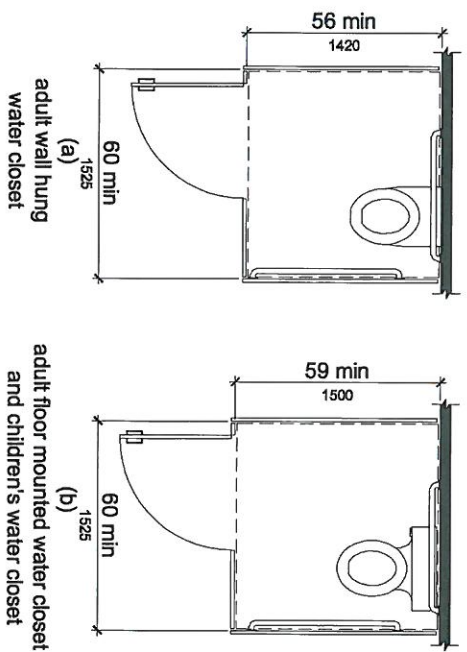


FIGURE 604.8.1.1
SIZE OF WHEELCHAIR ACCESSIBLE
TOILET COMPARTMENT

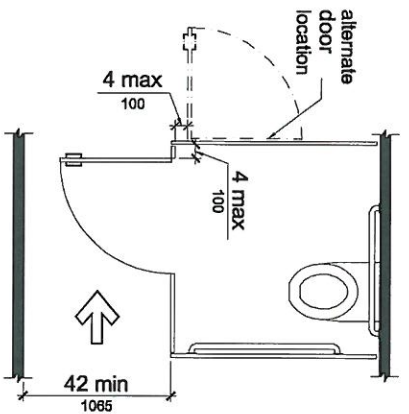


FIGURE 604.8.1.2
WHEELCHAIR ACCESSIBLE TOILET
COMPARTMENT DOORS

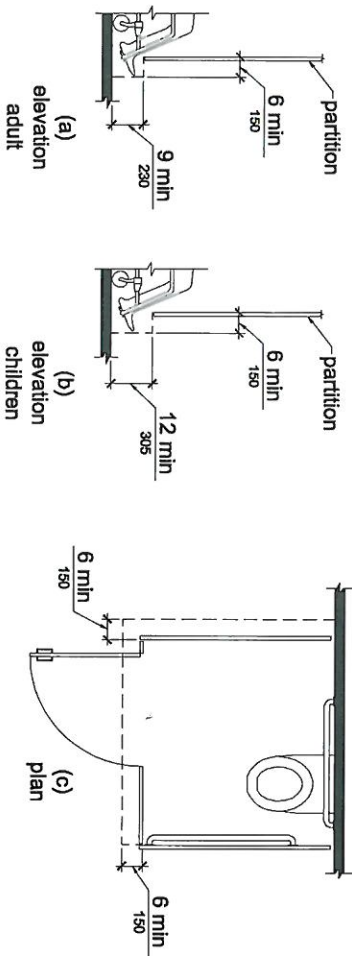


FIGURE 604.8.1.4
WHEELCHAIR ACCESSIBLE TOILET
COMPARTMENT TOE CLEARANCE

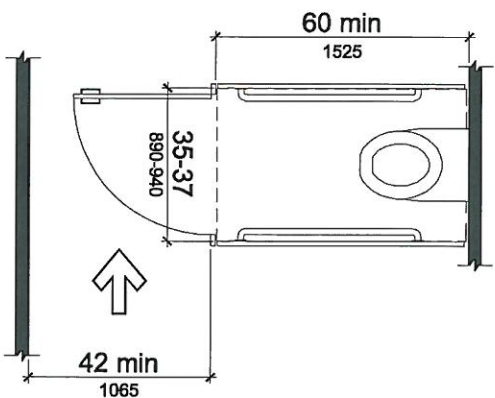


FIGURE 604.8.2
AMBULATORY ACCESSIBLE
TOILET COMPARTMENT

* This graphic has been prepared by ADAAG Consulting Services, LLC for informational purposes only, with no warranty as to accuracy or to a particular set of circumstances.



ADAAG CONSULTING SERVICES, LLC

Architecture – Engineering – Construction
www.adaag-consulting.com 1-888-768-7788
Miami–New York–New Orleans–Dallas–Los Angeles

TITLE

TOILET COMPARTMENTS

FIGURE NUMBERS

604.8.1.1
604.8.1.2
604.8.1.4
604.8.2

N.T.S.

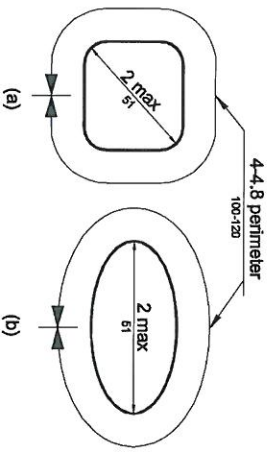


FIGURE 609.2.2
GRAB BAR NON-CIRCULAR CROSS SECTION

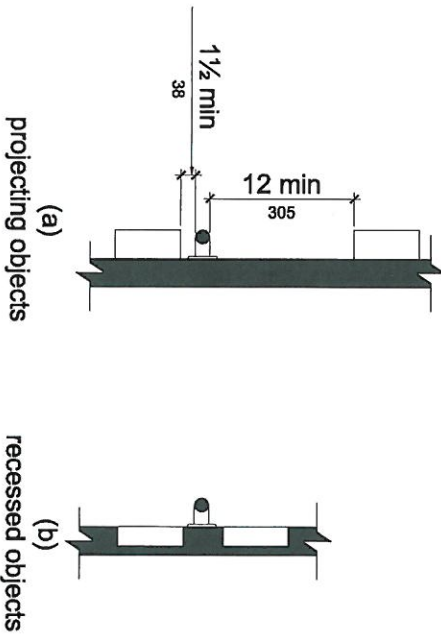


FIGURE 609.3
SPACING OF GRAB BARS

* This graphic has been prepared by ADAAG Consulting Services, LLC for informational purposes only, with no warranty as to accuracy or to a particular set of circumstances.

	<p>ADAAG CONSULTING SERVICES, LLC</p> <p>Architecture – Engineering – Construction</p> <p>www.adaag-consulting.com 1-888-768-7788</p> <p>Miami–New York–New Orleans–Dallas–Los Angeles</p>	<p>TITLE</p> <p>SHOWERS' GRAB BARS</p> <p>N.T.S.</p>	<p>FIGURE NUMBERS</p> <p>609.2.2</p> <p>609.3</p>
--	---	--	---

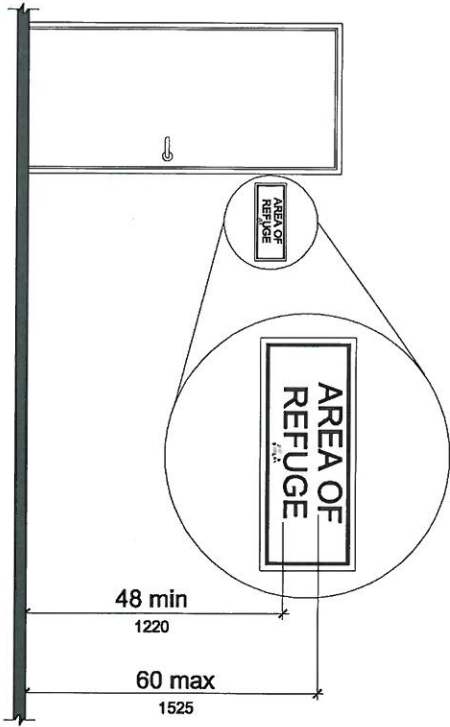


FIGURE 703.4.1
HEIGHT OF TACTILE CHARACTERS
ABOVE FINISH FLOOR OR GROUND

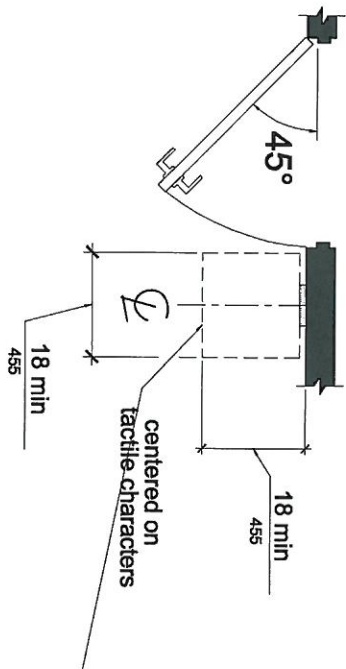


FIGURE 703.4.2
LOCATION OF TACTILE SIGNS AT DOORS

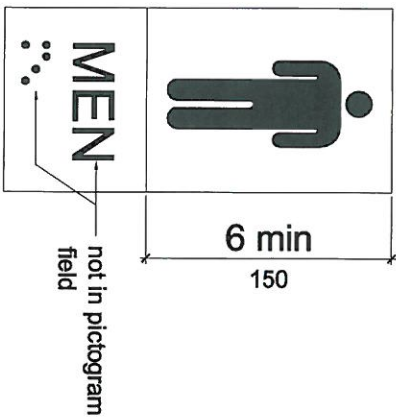


FIGURE 703.6.1
PICTOGRAM FIELD

* This graphic has been prepared by ADAAG Consulting Services, LLC for informational purposes only, with no warranty as to accuracy or to a particular set of circumstances.

ADAAG CONSULTING SERVICES, LLC

Architecture – Engineering – Construction
www.adaag-consulting.com 1-888-768-7788
Miami–New York–New Orleans–Dallas–Los Angeles

Copyright © 2012 ADAAG Consulting Services, LLC

TITLE

SIGNS

N.T.S.

FIGURE NUMBERS

703.4.1

703.4.2

703.6.1