



Waltham's

2nd Annual Waltham Bicycle Update



May 13, 2015 6-7pm

Government Center Public Meeting Room
City of Waltham Planning Department

Agenda 6:00 - 7:00pm

- ▣ **Welcome & Happy Waltham Bay State Bike Week!**
- ▣ **MA Bicycle Framework**
- ▣ **Bicycle-Friendly Waltham**
- ▣ **2014 Updates to Waltham's Baseline**
- ▣ **Waltham Goals 2015**
- ▣ **Q&A**

MA Transportation Framework

- ▣ **MA now 4th Bicycle Friendly State; Up from 19th in 2010**
- ▣ **Progressive Legal Framework for Bicyclists**
- ▣ **Bay State Greenway Network Vision**
- ▣ **MassDOT Healthy Transportation Design Directive**
- ▣ **Goal to Triple Bicycling, Walking & Transit Trips by 2030**

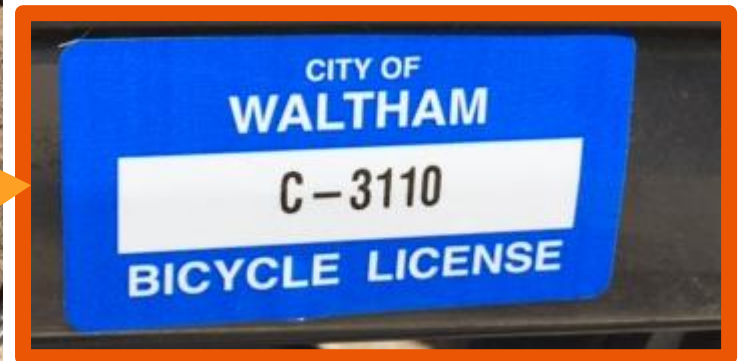
Bicycle Friendly Waltham

- **Location, Scale & Existing Land Use/Transportation Network**
- **Vibrant Downtown and 128/95 Businesses**
- **Waltham's Multi-Modal Transportation Master Plan Funded**
- **Increasing Interest for More & Better Travel Options**
- **'Bicycling Renaissance' as a Travel Option that is "Easy, Convenient, Healthy & Fun Way to Get Around"**
- **Active Waltham Bicycle Committee**
- **ALL Project/Proposals Comply with Waltham Traffic Commission's 'Complete Street Policy'**
- **Waltham Police Department Offers Bicycle Registration**

Waltham Bicycle Registry



- ▣ **FREE & EASY** Bicycle Registration Offered by Waltham Police Department
- ▣ **<5 Minutes to Complete Form & Pickup Stickers at Station on Lexington Street**
- ▣ **Helps to Locate Your Bike, if Stolen**



2014 Updates to Waltham's Baseline

- ▣ **Bicycle Crash Data**
- ▣ **Bicycle Facilities**
- ▣ **Data Trends & Takeaways**

Bicycle Crash Locations 2010 City of Waltham



Bicycle Crashes

● 2010 (19)

Bicycle Facilities

— Bicycle Lanes

— Shared Use Off Road Path



Bicycle Crash Locations 2011

City of Waltham



Bicycle Crashes

● 2011 (26)

Bicycle Facilities

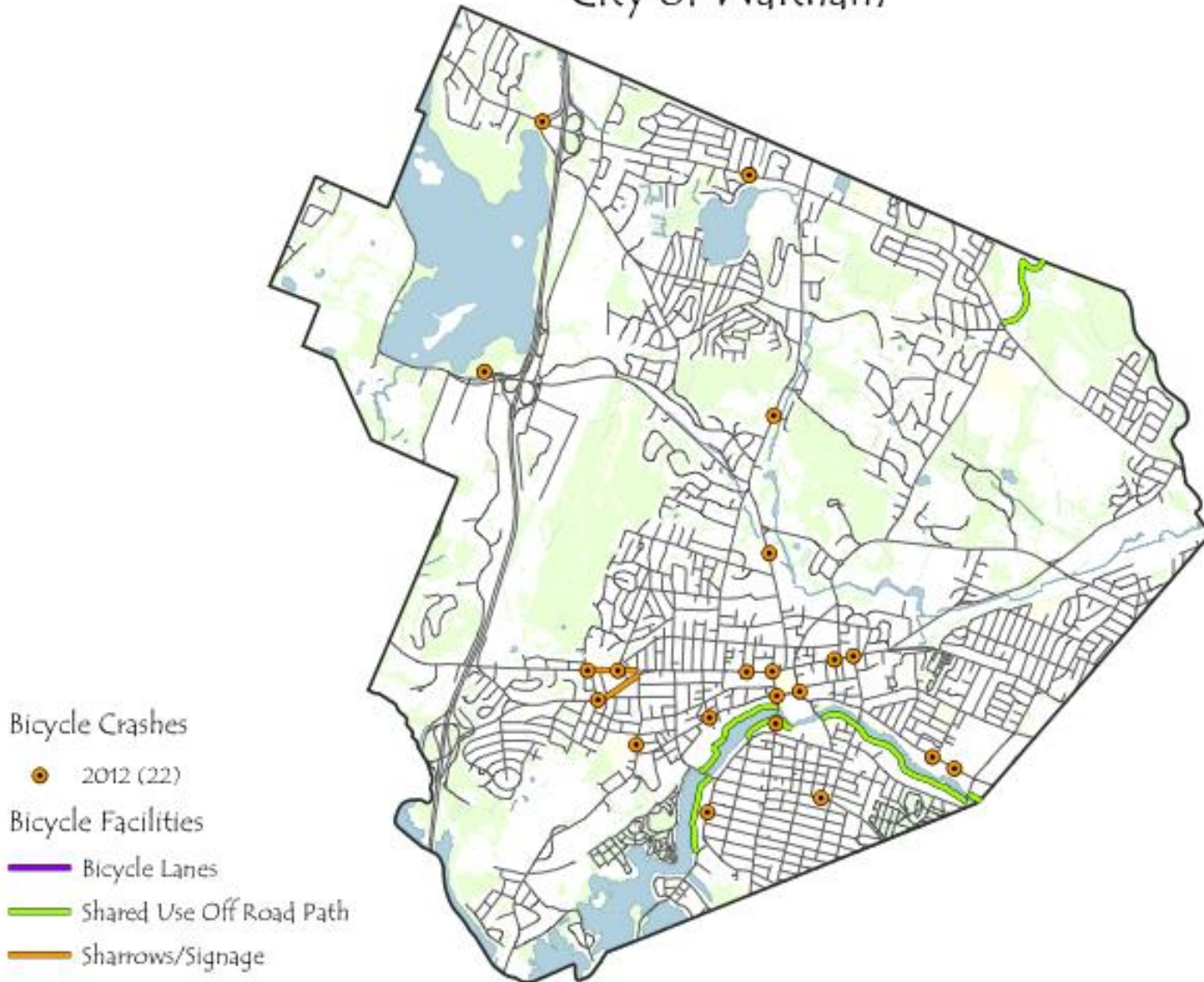
— Bicycle Lanes

— Shared Use Off Road Path



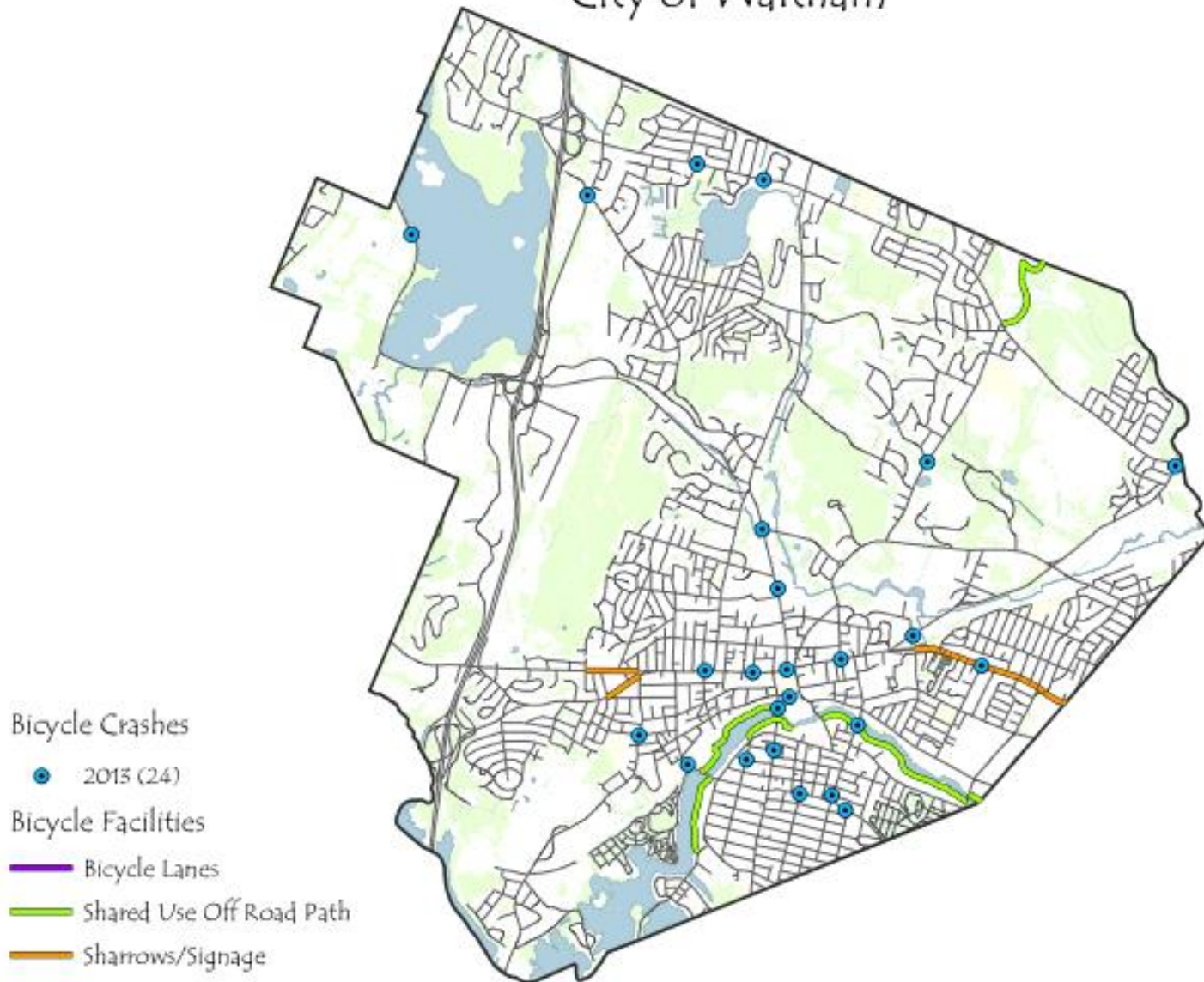
Bicycle Crash Locations 2012

City of Waltham



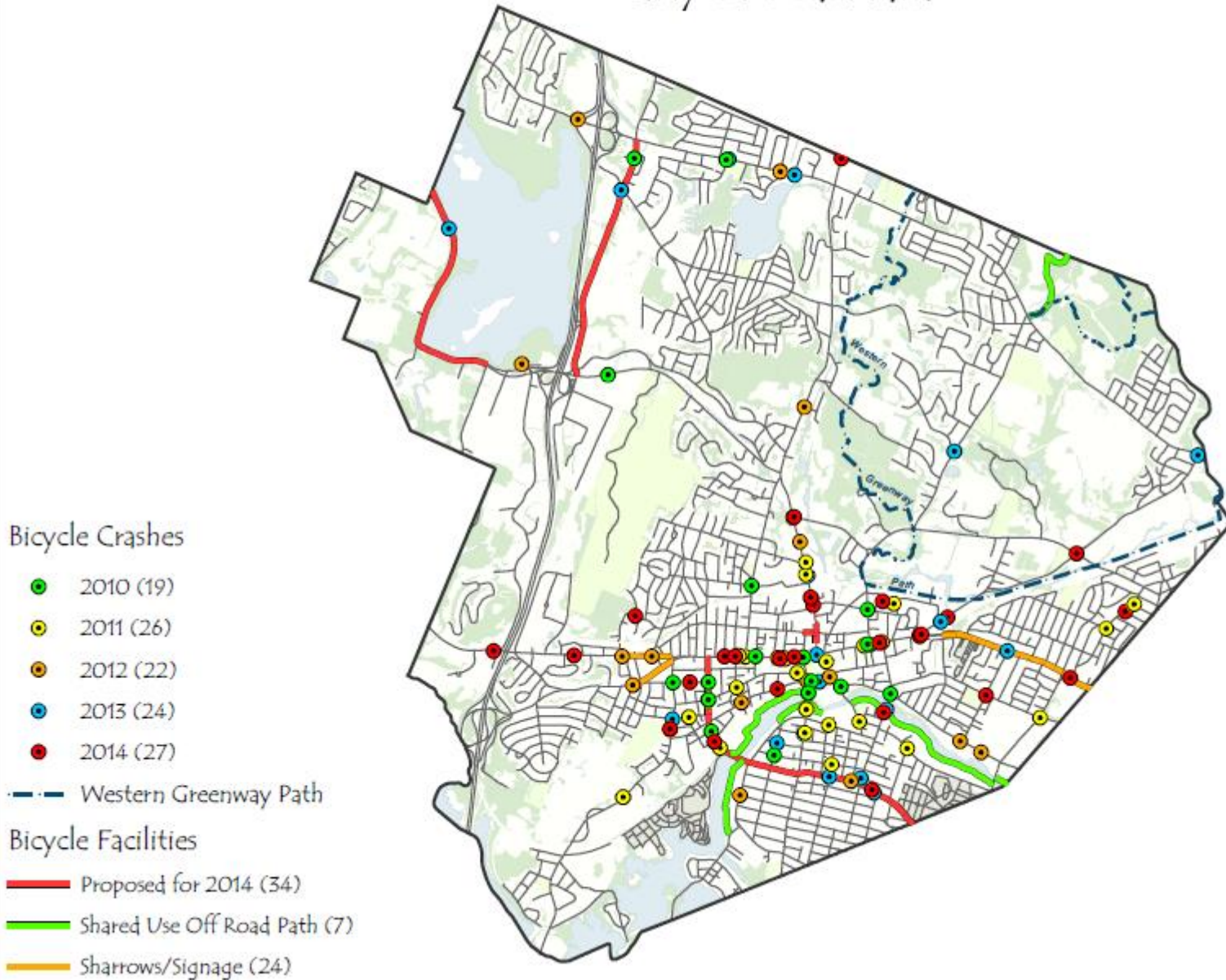
Bicycle Crash Locations 2013

City of Waltham

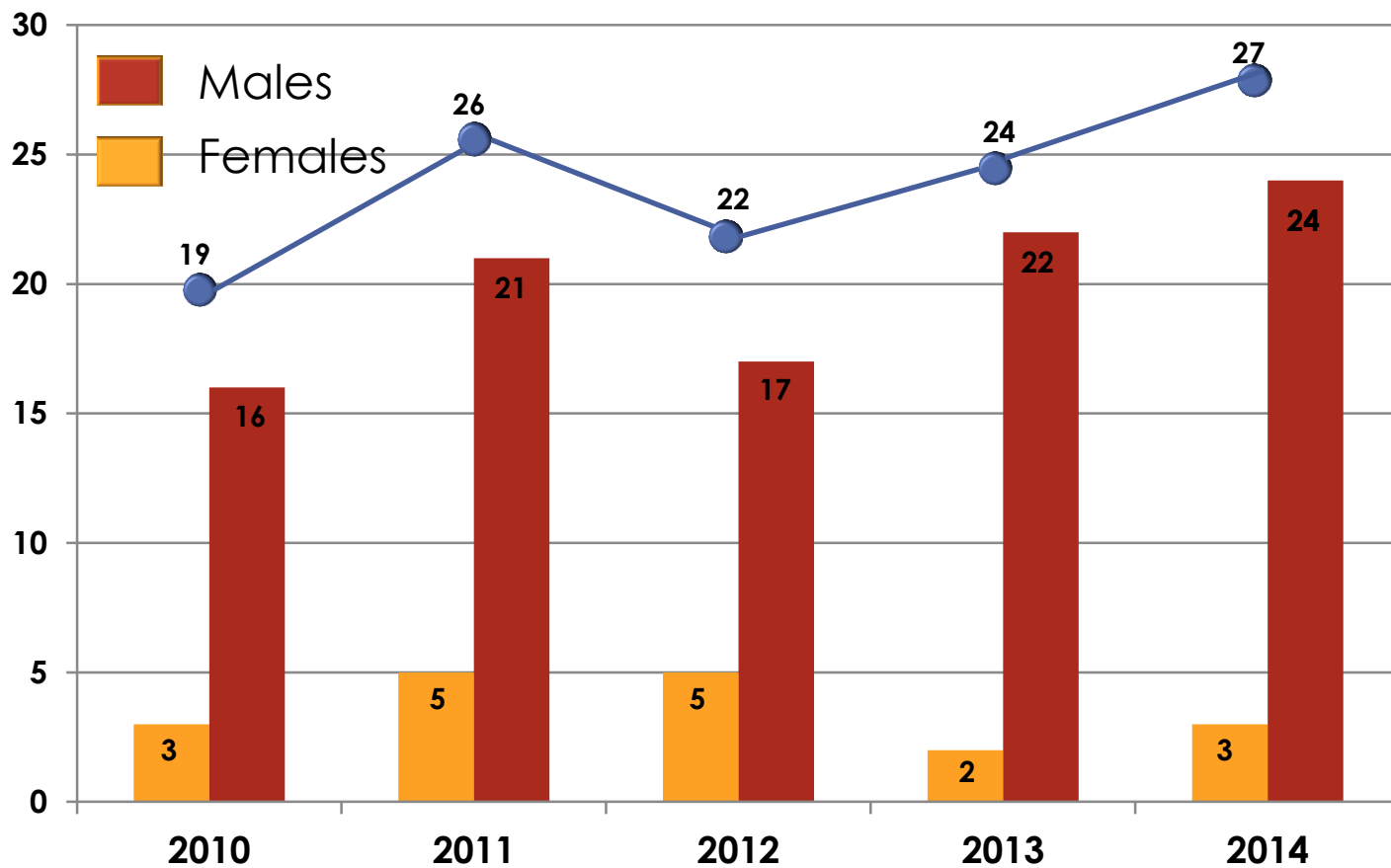


Bicycle Crash Locations 2010 - 2014

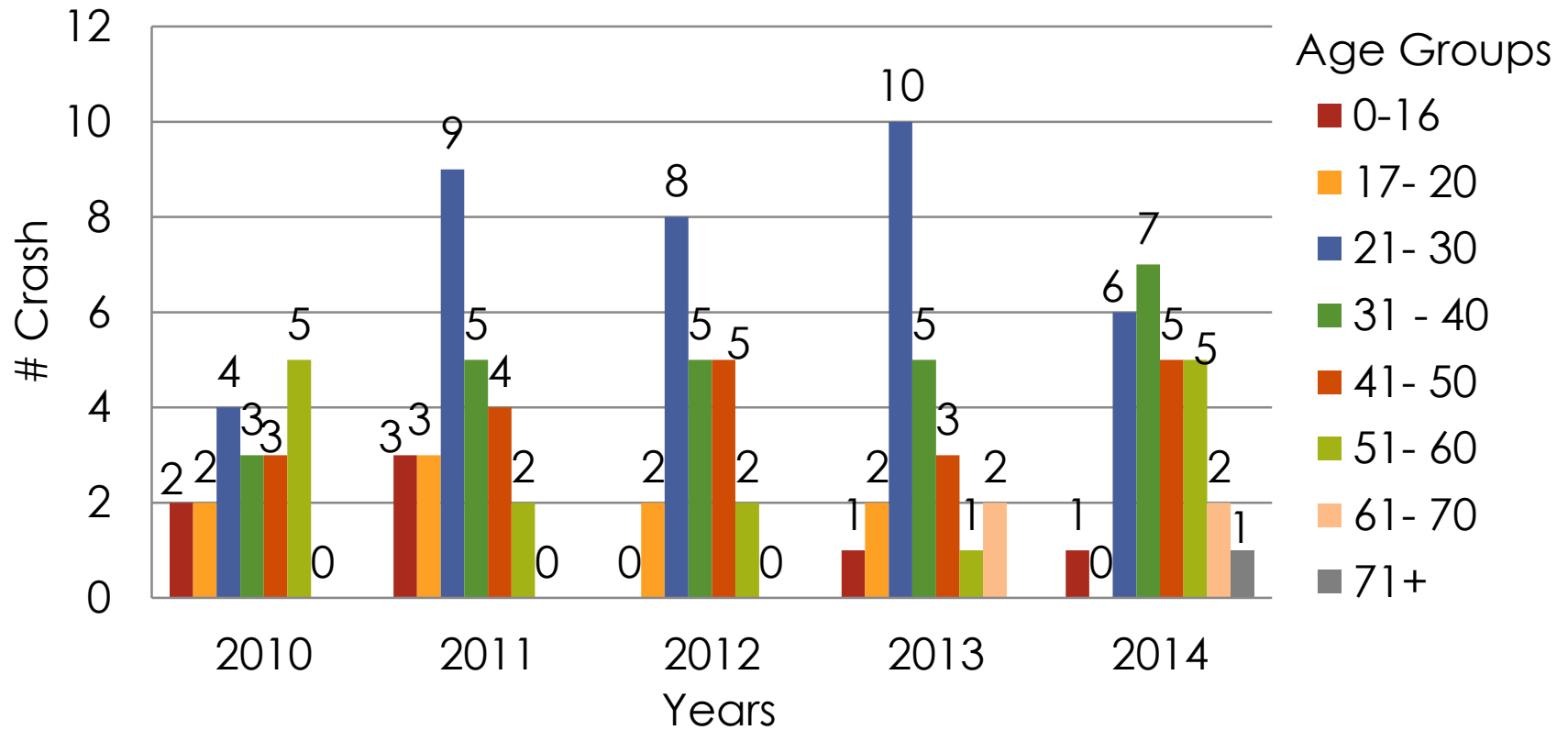
City of Waltham



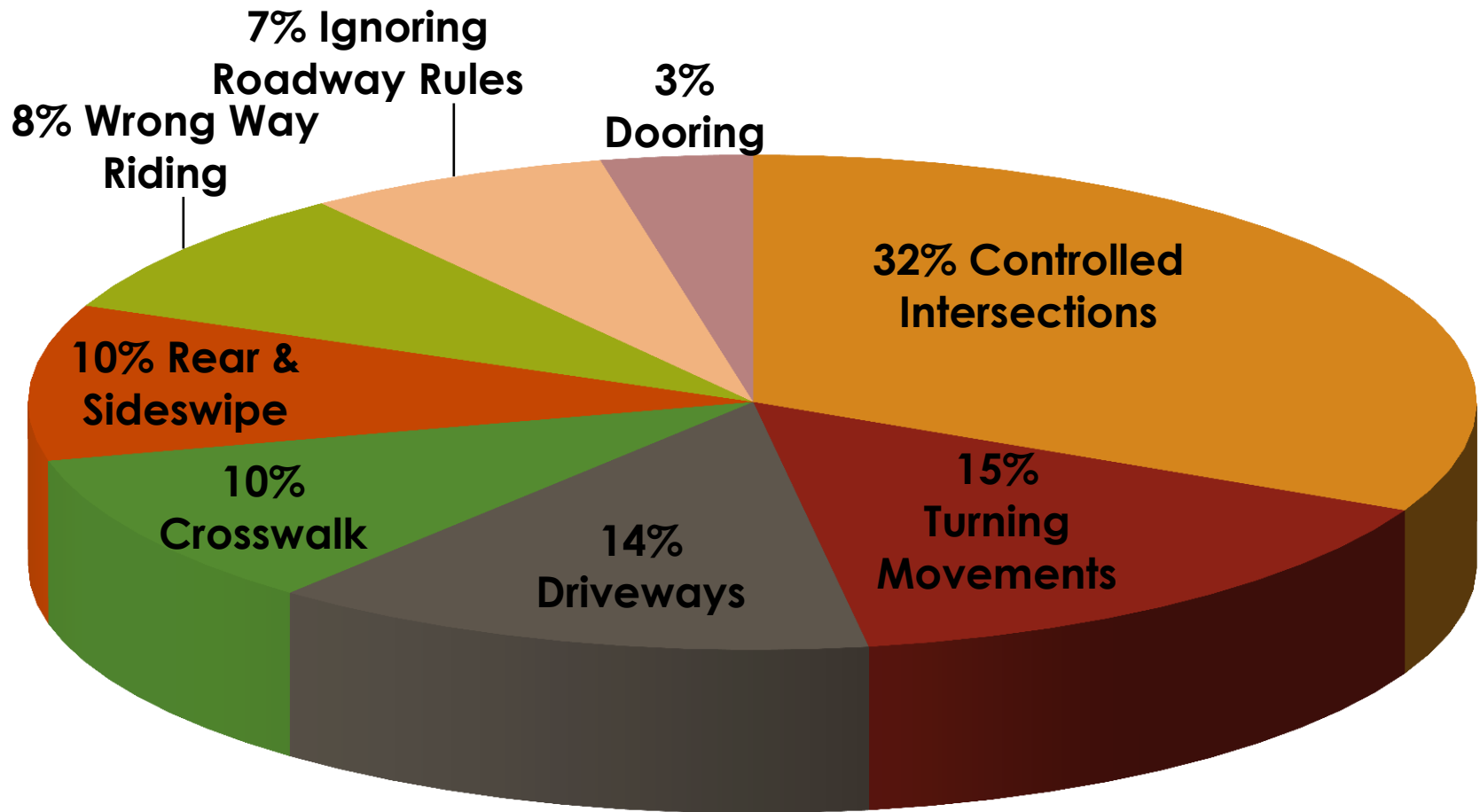
Crash Data by Year & Gender



Crash Data by Year & Age



Waltham's Reported Bicycle Crashes



Takeaways & Data Trends

- **118** Reported Bicycle Crashes 2010 – 2014
- **61 of the 118** Crashes Resulted in Transport to Hospital
- **50%** of the Reported Crashes for 2014 Required Transport to Hospital
- **24** Reported Bicycle Crashes Average Per Year
- Most Accidents Reported by Data Group - **Men 31-40 Years** closely followed by Men 21-40 Years

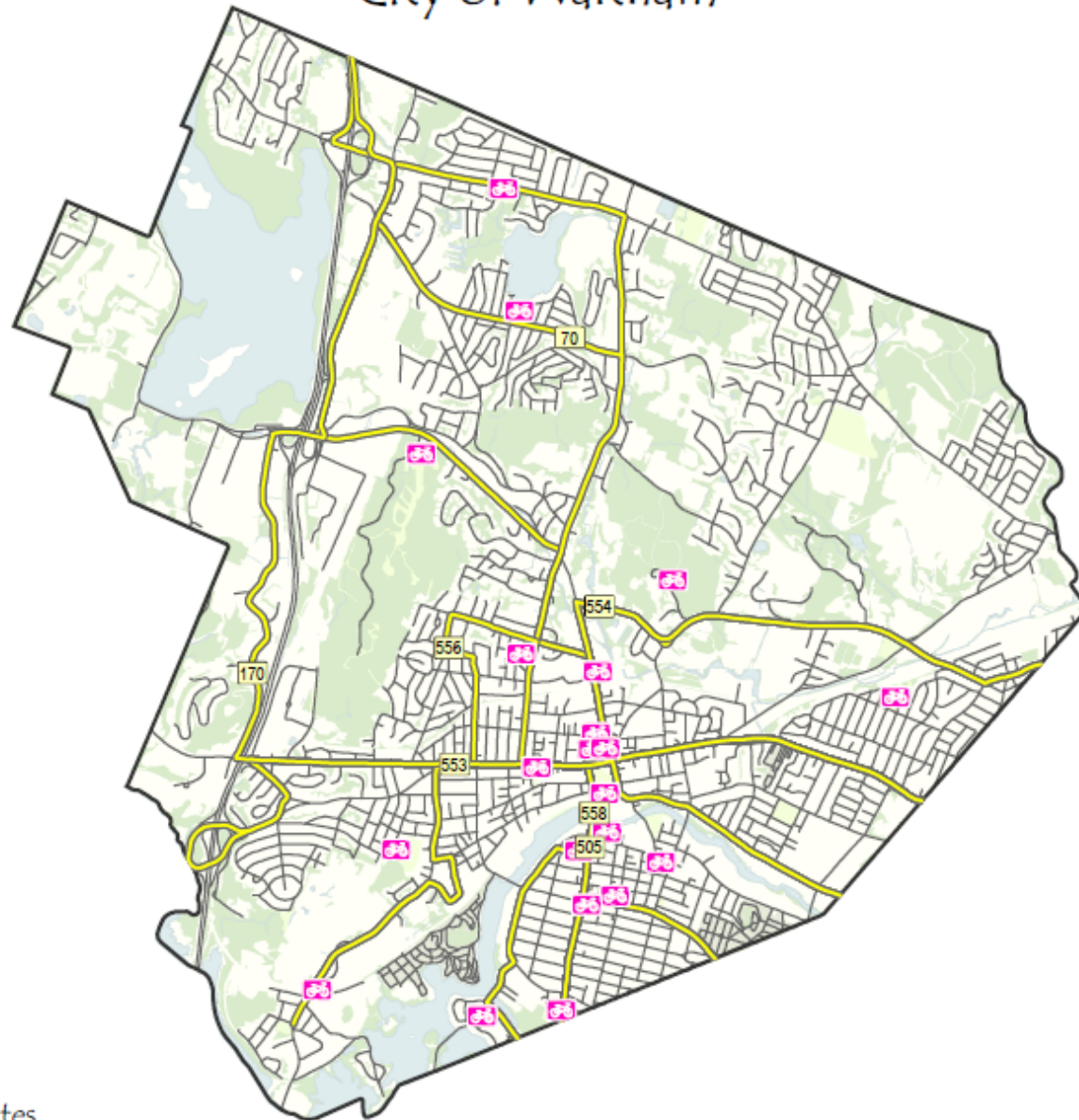
Baseline Existing On-Road Bicycle Facilities

Type of Facility	Location	Year	Miles
On Road Sharrows/Signage	Main Street Between (Palmer - Lunda Streets)	2012	.26
	Weston Street (South- Eddy Streets)	2012	.19
	Main Street (RR Tracks – Watertown)	2013	.66
			1.12 Miles


Baseline Existing Off-Road Bicycle Facilities

Type of Facility	Location	Year	Miles
Off-Road Shared-Use Path	Waltham Charles River Path	Varied	2.27
	Metropolitan Parkway	Varied	1.19
			3.46 Miles

Bicycle Parking City of Waltham



Bicycle Facilities

 Bicycle Parking

 MBTA Bus Routes

Bicycle Facilities Added in 2014

Opportunity	Location	New Miles Proposed	New Miles Installed	Update
Maintenance	High St. & Prospect St.	1.59	0	Summer 2015
Utility Work	School St. & Lex. St	.16	0	Utility Work 2015
Special Permit	Wyman St.	1.26	1.26	---
Maintenance	Winter St.	1.37	1.37	Spring 2015 (Fix Lane Width & Signs)
MassDOT	Rte. 20	0	.93	Currently in Process
Maintenance	Beaver St.	0	.82	---
Maintenance	Main/117	0	.4	---
		4.38 Miles Proposed 2014	4.78 Miles Created 2014	1.75 Miles Pending (6.53 Total)

May 2015 Proposed Bicycle Facilities

Opportunity	Location	New Miles Proposed
Sharrow Update: Replace Fading Paint with Longer Lasting Decals	Main, Wyman, Lexington, Beaver	Maintenance (Not New Miles)
Maintenance	Forest St.	1.22
Maintenance	River St.	.44
DCR Elm to Mill Connection	Charles River Reservation	.15
		2.72 New Miles Proposed 2015

Updated Bicycle Facilities and Bicycle Crash Data City of Waltham

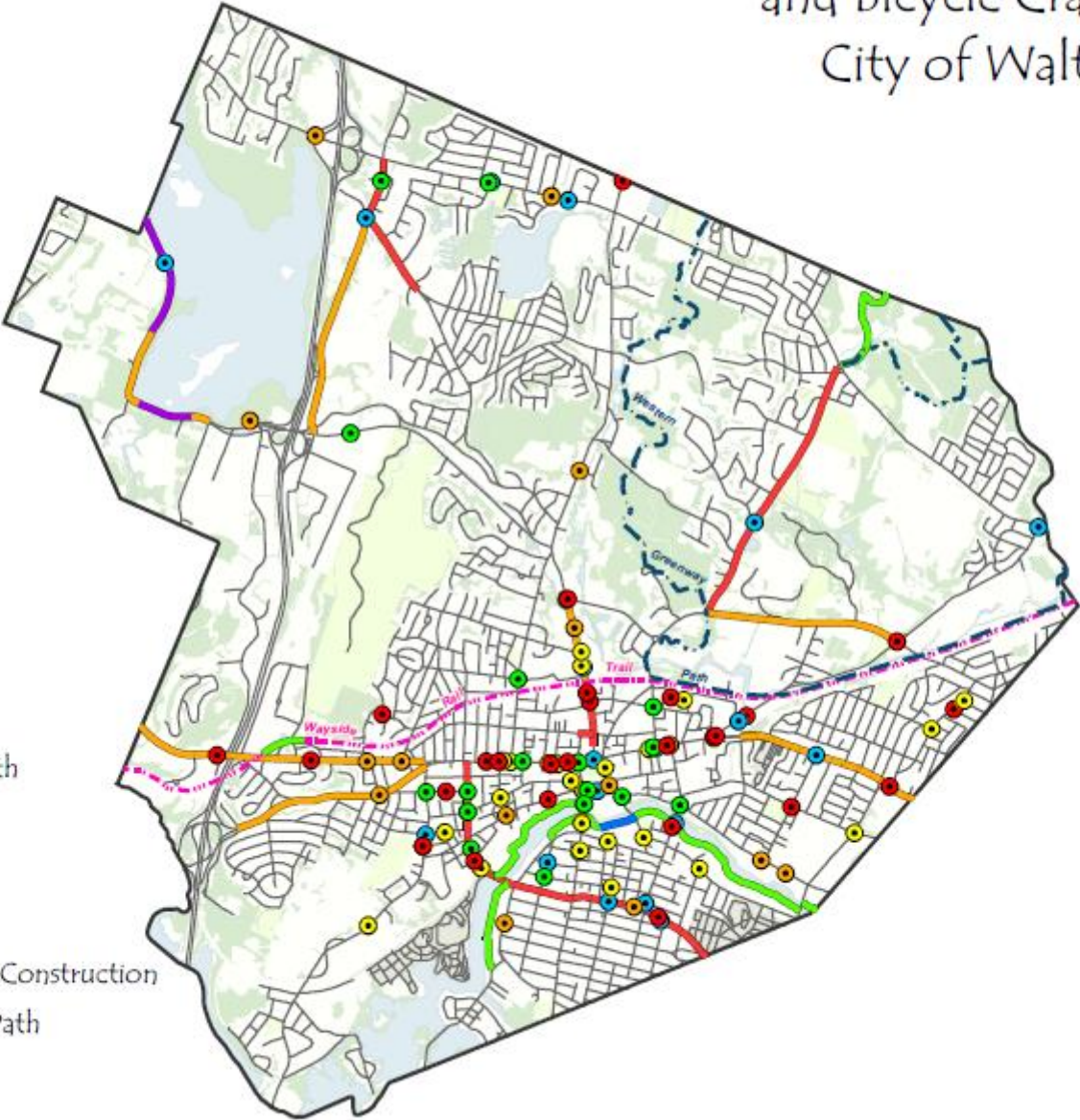
Bicycle Crashes

- 2010 (19)
- 2011 (26)
- 2012 (22)
- 2013 (24)
- 2014 (27)

Western Greenway Path

Bicycle Facilities

- Bicycle Lanes
- Proposed for 2015
- DCR Riverwalk Under Construction
- Shared Use Off Road Path
- Sharrows/Signage
- Wayside Rail Trail



Outcomes 2014 Bicycle Transportation Goals

- ✓ Install **1st Bicycle Lanes (Winter Street)** in Waltham
- ✓ Increase On-Road Facilities by **New 3 Miles (Exceeded Goal Actual 4.78 Miles)**
- ✓ Work with Police + Traffic Engineering to Use Crash Data to Reduce Number of Bicycle Crashes **Helmet Data 2015/Bicycle Registration**
- ✓ Bridge Data Gap on Helmut Usage **Modified Crash Form**
- ✓ Establish Strategy for Funding, Designing and Building Wayside Rail Trail **Presented Wayside to City Council April, Hosted MassDOT/DCR Forum November, Meeting with MassDOT & DCR Currently on Design & Next Steps**
- ✓ Apply for Bicycle Friendly Community Designation **Applied & Seeking to Implement Recommendations for Resubmission**

****BONUS** WALTHAM TRAFFIC COMMISSION ADOPTS 9/18/14 COMPLETE STREET POLICY**

2015 Bicycle Transportation Goals

- ❑ **Seek Funding for Design of Wayside Rail Trail**
- ❑ **Increase On-Road Facilities by 3 Miles**
- ❑ **Adopt APBP Type Guidance for Bicycle Parking**
- ❑ **Continue Collaborations with Police + Traffic Engineering on Complete Street Safety**
- ❑ **Start Multi-Modal Transportation Plan – Data Collection & Public Process**
- ❑ **Re-apply for Bicycle Friendly Community Designation**
- ❑ **Encourage Local Businesses to Consider Applying for Bicycle Friendly Business Designation**
- ❑ **Encourage Brandeis University & Bentley University to Consider Applying for Bicycle Friendly University Designation**

Thank You!

Waltham's

