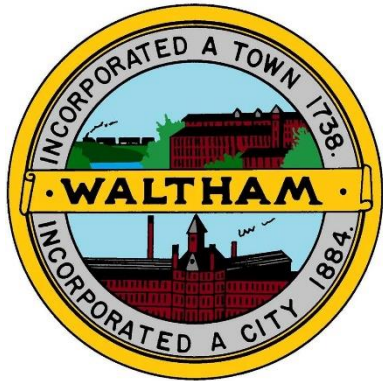




# Route 128 Transportation Planning Study

Presented by  
**Robert Nagi, PE**

October 18, 2018



# Regional Development Growth

- Over the last 10 years, about 3 MSF of building space has been built in the western portion of Waltham
- Over 3.5 MSF of building space planned and permitted along this corridor
  - 2.9 MSF of office space
  - 230 KSF of retail space
  - 625 hotel rooms
  - Various fitness, warehouse, and other uses
- Potential for an additional development ranging from office to residential to retail.



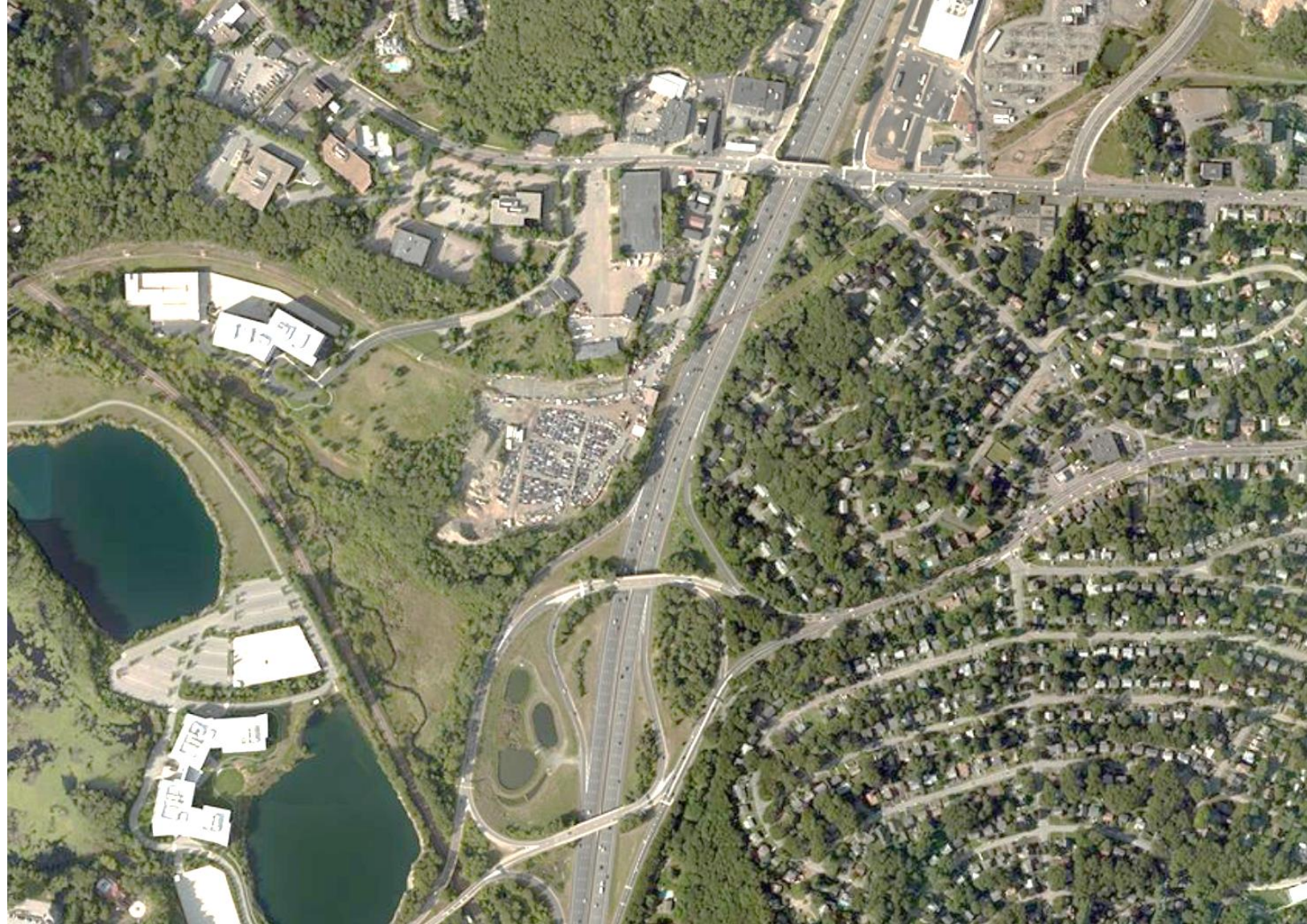
# Areas of Congestion

- Winter Street
- Wyman Street
- Third Avenue



# Areas of Congestion

- Stow and Tavern Neighborhood
- Route 117 Bridge
- Route 128 Ramps
- Speeds on Route 20







**Green Street**

**Route 20**

**Main Street / Route 117**

**Route 128/I95**

**Winter Street**



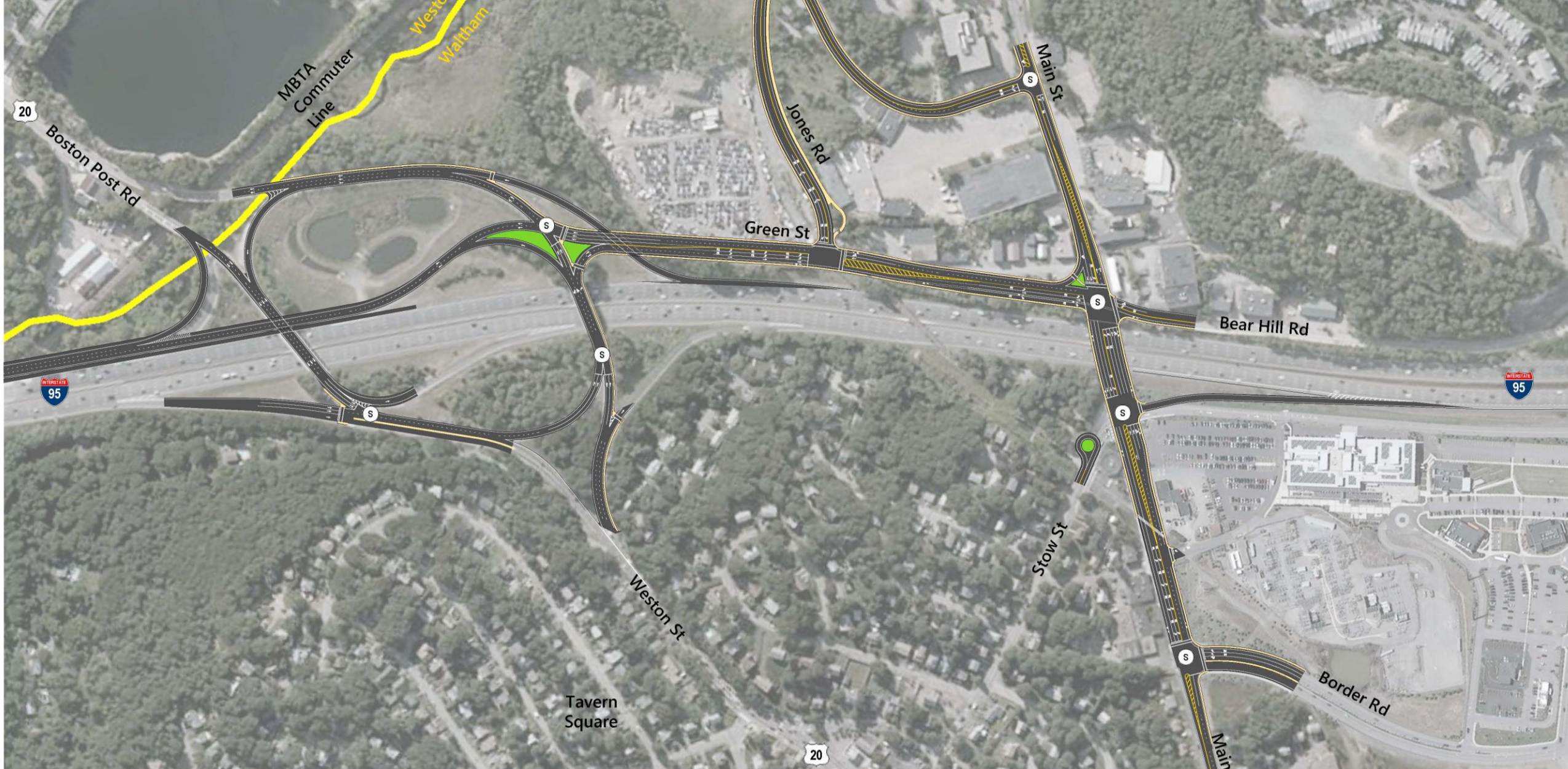
**Green Street**

**Route 20**

**Main Street / Route 117**

**Route 128/I95**

**Winter Street**



## Route 128 Corridor Master Plan – Route 20 / Route 117

Waltham, Massachusetts





**Green Street**

**Route 20**

**Main Street / Route 117**

**Route 128/I95**

**Winter Street**

# Route 20 Interchange

- Ramps Upgrades
- Safety Upgrades
  - Weaves
  - Speeds
- Access To Green Street





**Green Street**

**Route 20**

**Main Street / Route 117**

**Route 128/I95**

**Winter Street**

# Green Street Extension Phase 1

- Connection between Route 20 and Route 117
- Alternative Route to Tavern/Stow Neighborhood
- Access to Bear Hill Road



# Green Street Extension Phase 2

- Widened Corridor
- Connection to Jones Road
- Access to Bear Hill Road





**Green Street**

**Route 20**

**Main Street / Route 117**

**Route 128/I95**

**Winter Street**

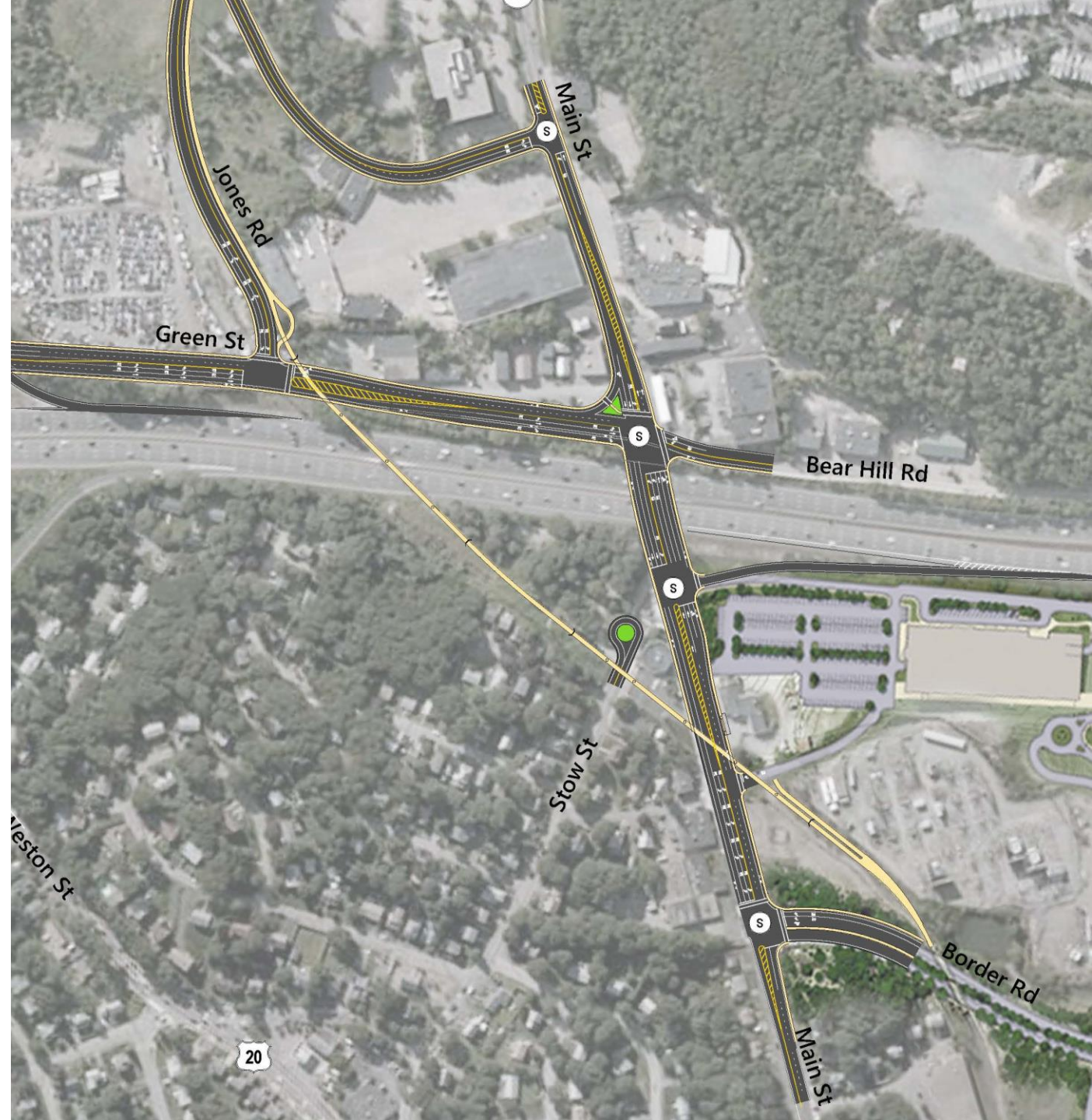
# Route 117 Corridor

- Widening Route 117 Bridge
- New Northbound Route 128 On-Ramp
- Cul-de-Sac at the end of Stow Street
- Upgrades to:
  - Bear Hill Road
  - Route 117



# Pedestrian / Bicycle Network

- Sidewalks
- Bicycle Lanes
- Wayside Trail Connections
  - On-Street
  - At-grade
  - Grade Separated
- MBTA Considerations







**Green Street**

**Route 20**

**Main Street / Route 117**

**Route 128/I95**

**Winter Street**



# Third Avenue Upgrades

- Intersection Upgrades
- Modified Route 128 Off-Ramp
- New Route 128 NB On-Ramp
  - Reduces Impacts to Wyman Street





**Green Street**

**Route 20**

**Main Street / Route 117**

**Route 128/I95**

**Winter Street**

# Connector Road

- Full Time Connection
- Alternative Route to Winter Street / Route 20
- Reduces burden on Route 128



## Project Summary

- Regionally Significant Project
- \$50-60 Million Project
- Reduces Residential Impacts
- Provides More Direct Access to Route 128
- Upgrades Safety
- Complete Street Compliant

## Next Steps

- Seek Support from the City
- Continue to Advance the Studies and Design
  - City of Waltham
  - MassDOT
  - FHWA
- Secure Right of Way Needed
- Secure Financing

# Questions

Robert Nagi | [RNagi@vhb.com](mailto:RNagi@vhb.com) | 617.607.2731

Kathleen Keen | [KKeen@vhb.com](mailto:KKeen@vhb.com) | 617.607.2970

[www.vhb.com](http://www.vhb.com)



Offices located throughout the east coast

# Piety Corner

- Signal Upgrades
- Ped/Bike Connections
- Consolidated Intersection

