

Waltham High School Joint Meeting

Waltham City Council & Waltham School Committee



January 30, 2018

Symmes Maini & McKee
Associates

SMMA

AGENDA



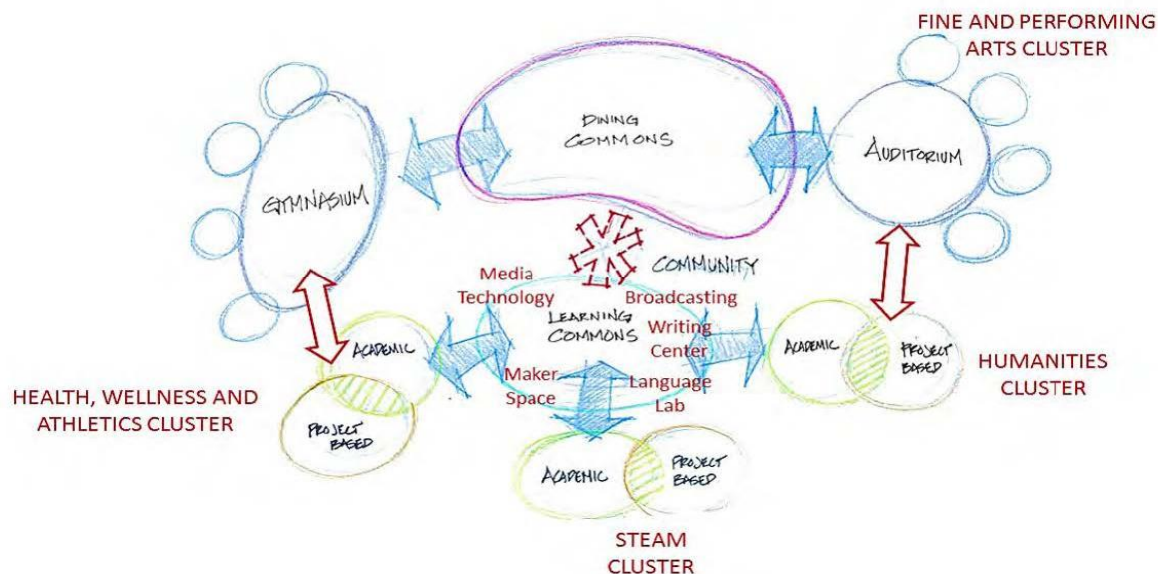
1. Agreed Upon Items
2. Waltham Public Schools
Current and Future Building
Needs
 1. District Needs
 2. Waltham High School
Needs
3. Career and Vocational
Technical Education
4. Brief Analysis of Potential
Sites
5. Waltham High School
project ramifications
6. Questions for Departments,
Boards and Commissions
7. Open Discussion



1 Agreed upon items



1. We must deliver a new WHS to our community.
2. The State has used the Waltham educational plan as an exemplar. The plan provides to our students new academic opportunities that will make them more competitive in college, career and community.
3. The building concept achieves the educational plan.
4. The City of Waltham and its students deserve this.



1 Proposed Ground Floor Plan



Fine and Performing Arts Cluster

- Graphic Design
- Fashion Technology
- Auditorium / Drama
- Carpentry (Set Design)
- Cosmetology
- Radio & TV Broadcasting
- Art
- Music
- Dance
- Drama

Humanities Cluster

- Family & Consumer Science
- Lab
- Maker Space
- Culinary Arts
- Restaurant
- Early Education/Preschool
- World Languages
- Art
- English
- Social Studies
- History
- Science
- SPED

Health, Wellness and Athletics Cluster

- Health Services
- Gymnasium
- PE Alternatives
- Locker Rooms
- Phys Ed Offices
- Athletic Storage
- SPED/Lifeskills
- Biology
- Chemistry
- Mathematics
- English
- ELL



STEM Cluster

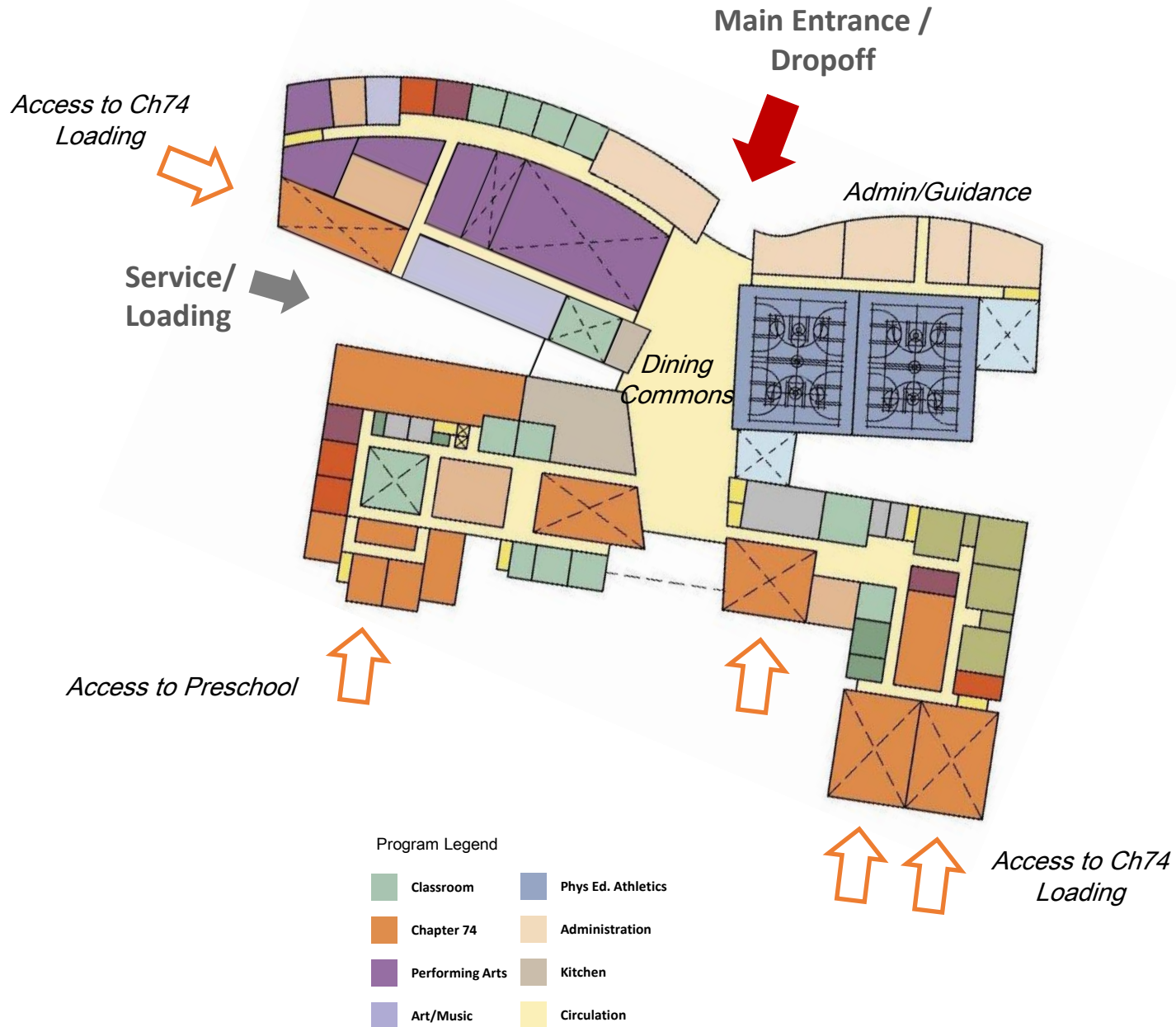
- STEAM Maker
- Fab Lab
- Electrical Tech
- Electronics
- Programming and Web Development
- Environmental Sciences
- HVAC
- Automotive & Collision Technology
- Space /
- Physics or Gen. Sciences
- Robotics
- Mathematics
- Social Studies
- English
- SPED
- Business

Program Legend

- Classroom
- Chapter 74
- Performing Arts
- Art/Music
- Phys Ed. Athletics
- Administration
- Kitchen
- Circulation

Existing High School: 384,800 gsf
 Proposed High School: 418,007 gsf

1 Proposed Ground Floor Plan



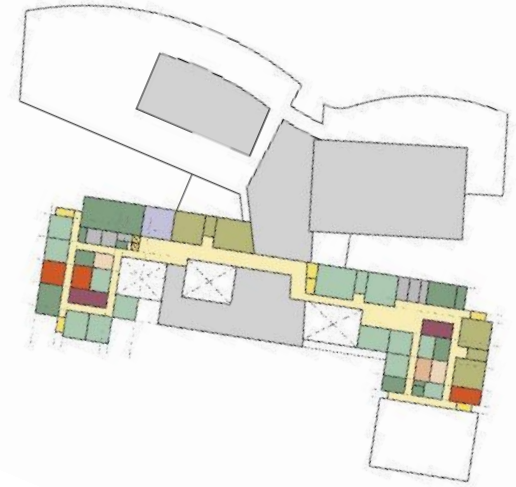
1 Proposed Upper Floor Plans



Level 2



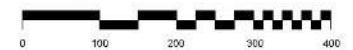
Level 3



Level 4

Program Legend

Classroom	Phys Ed. Athletics
Chapter 74	Administration
Performing Arts	Kitchen
Art/Music	Circulation





The City must address four specific needs: (1) new Waltham High School; (2) additional K-8 space; (3) Dual Language School; and (4) Central Office/PIC space.

A. District: If new WHS on current site

1. New High School for 1,830 Students – Approx. 418,000 GSF
2. New/renovate K-8 multi-purpose school to accommodate shifts in K-8 population growth- 828 students, Approx. 130,000 GSF
3. New/renovate K-5 or K-8 Dual Language School--552 students, Approx 56,000 GSF
4. New home for Central Office and PIC – Approx. 28,000 GSF.

or

B. District: If WHS on site other than current

1. New High School for 1,830 Students – Approx. 418,000 GSF Approx.
2. Renovated Existing High School for K-8 (possibly Dual Language) School, Central Office and PIC – Approx. 384,800 GSF.



3 Career and Vocational Technical



Current Career and Technical Education program offerings at Waltham High School include the following, with current enrollment noted in parenthesis (excluding exploratory).

Current Chapter 74 Programs:

Transportation Cluster

- Automotive Technology(38)
- Collision Technology (11)

Hospitalities Cluster

- Culinary Arts (20)

Education Cluster

- Early Education and Care (34)

Construction Cluster

- Electrical Technology (8)
- Carpentry and Cabinetmaking (23)

Arts and Communications Cluster

- Graphic Design and Communications (14)
- Radio and Television Broadcasting (50)

Manufacturing Cluster

- Metal Fabrication/Welding (20)
- Electronics Technology(23)

Proposed Future Chapter 74 Programs:

Construction Cluster

- Heating-Air Conditioning-Ventilation-Refrigeration

Agriculture and Natural Resources Cluster

- Environmental Science & Technology

Health Services Cluster

- Health Assisting

Business and Consumer Services Cluster

- Cosmetology

Information Technology Services Cluster

- Programming and Web Development





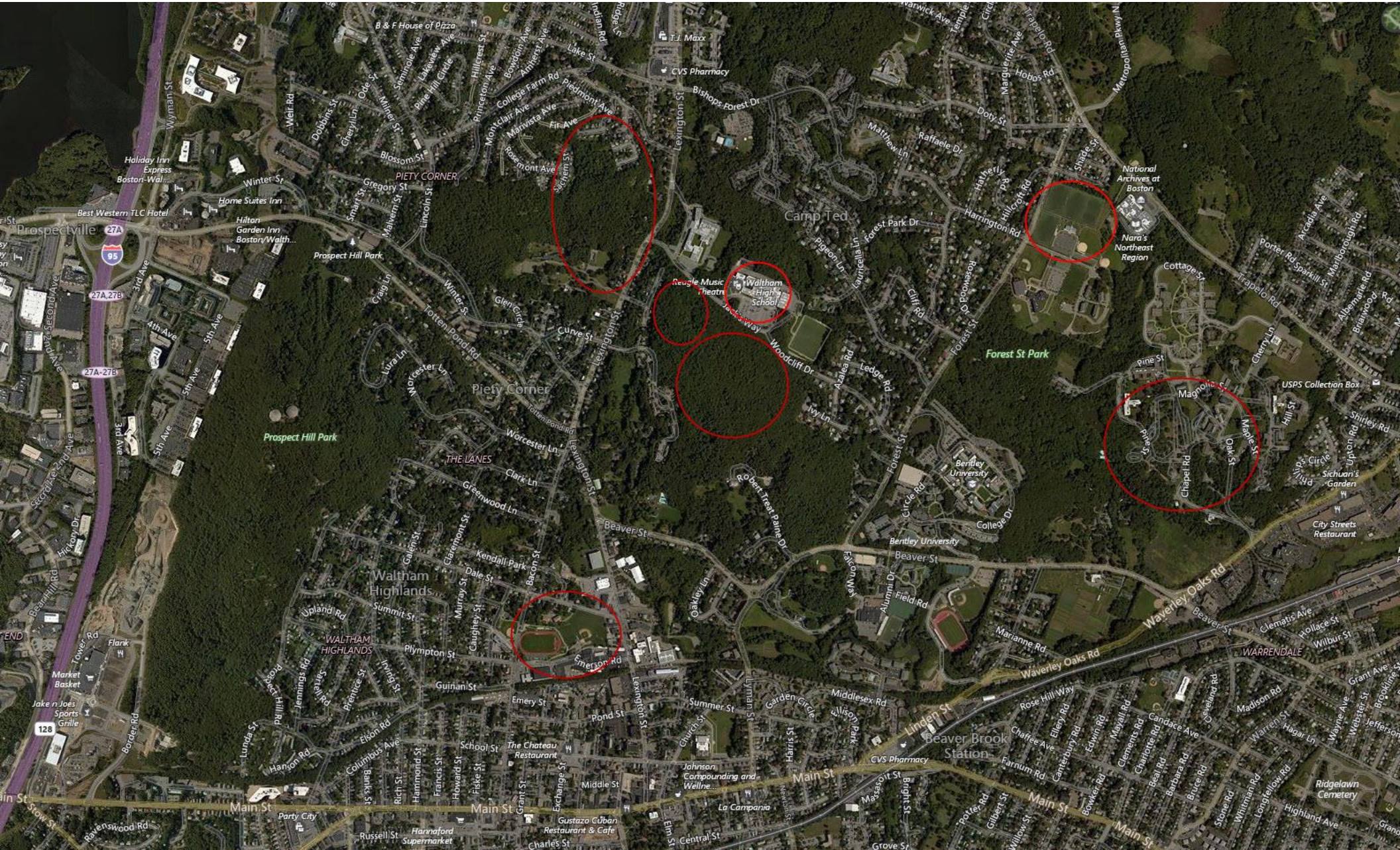
New STEM Pathways

In addition, the education plan calls for new pathways in the follow areas that might eventually grow into Chapter 74 options:

- *Robotics*
- *Computer Science and Cyber-security*
- *Biomedical Sciences and Biotechnology*
- *Engineering*



4 Brief Analysis of Potential Sites



4 Existing Conditions – High School Site



Acres: 30.69 HS
Building: 4.0 Acres
Parking : 479 HS



- Not a viable option
- Field cannot be located as shown without excessive costs due to existing topography and environmental conditions

Acres: 30.69 HS
Building: 4.5 Acres
Parking : 650 HS

4 High School Site – New Building Option



- Fields not Included:
- Multipurpose (2)
 - Baseball
 - Softball
 - Tennis Courts (12)

Acres: 30.69 HS
Building: 4.5 Acres
Parking : 650 HS

4 High School Site – New Building & K8



- Not a viable option
- Building cannot be located as shown without excessive costs.

Fields not Included:

- Multipurpose (2)
- Baseball
- Softball
- Tennis Courts (12)

Acres: 30.69 HS

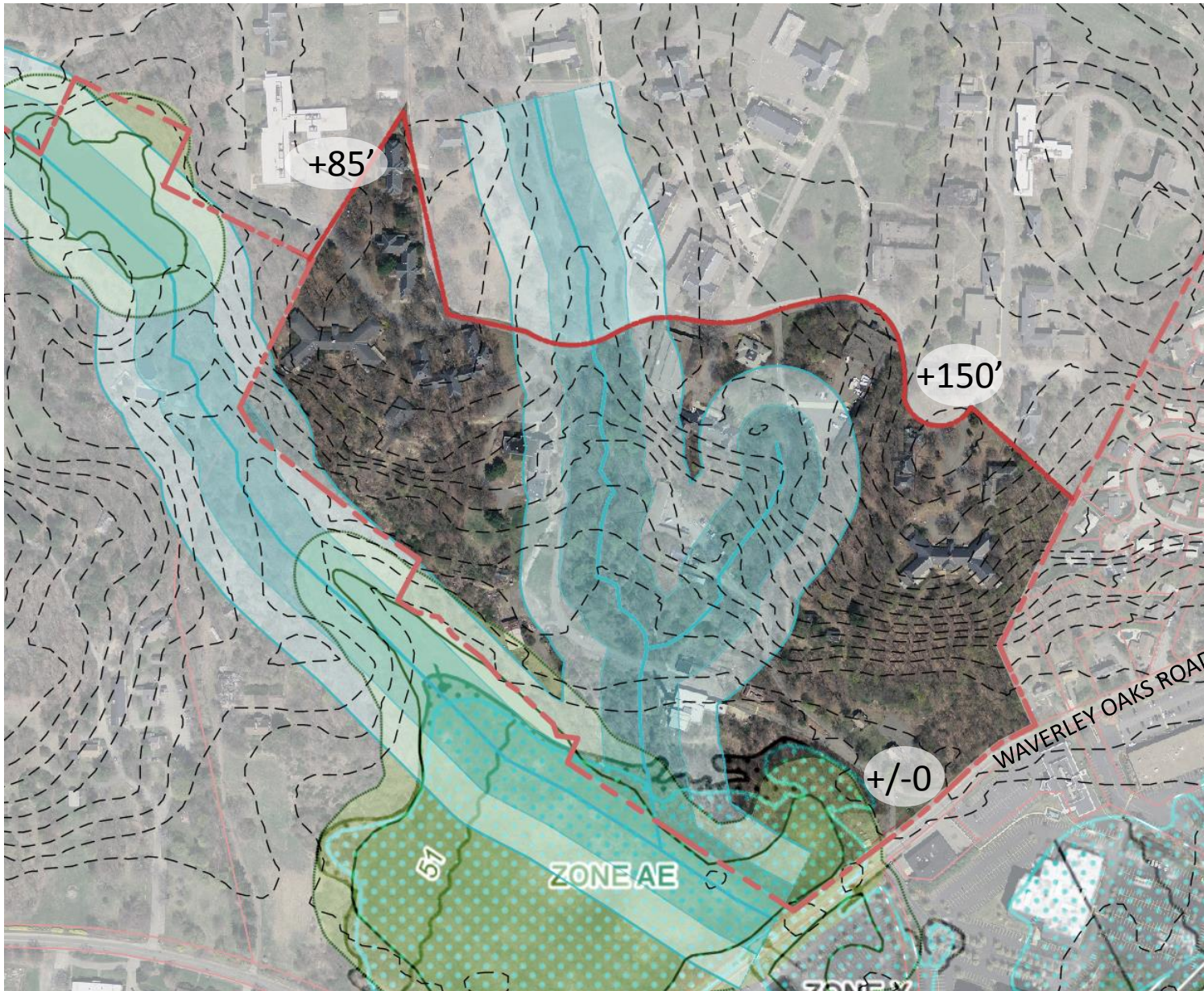
Building: 4.0 Acres K8


+ 4.5 Acres HS

Parking : 479 K8

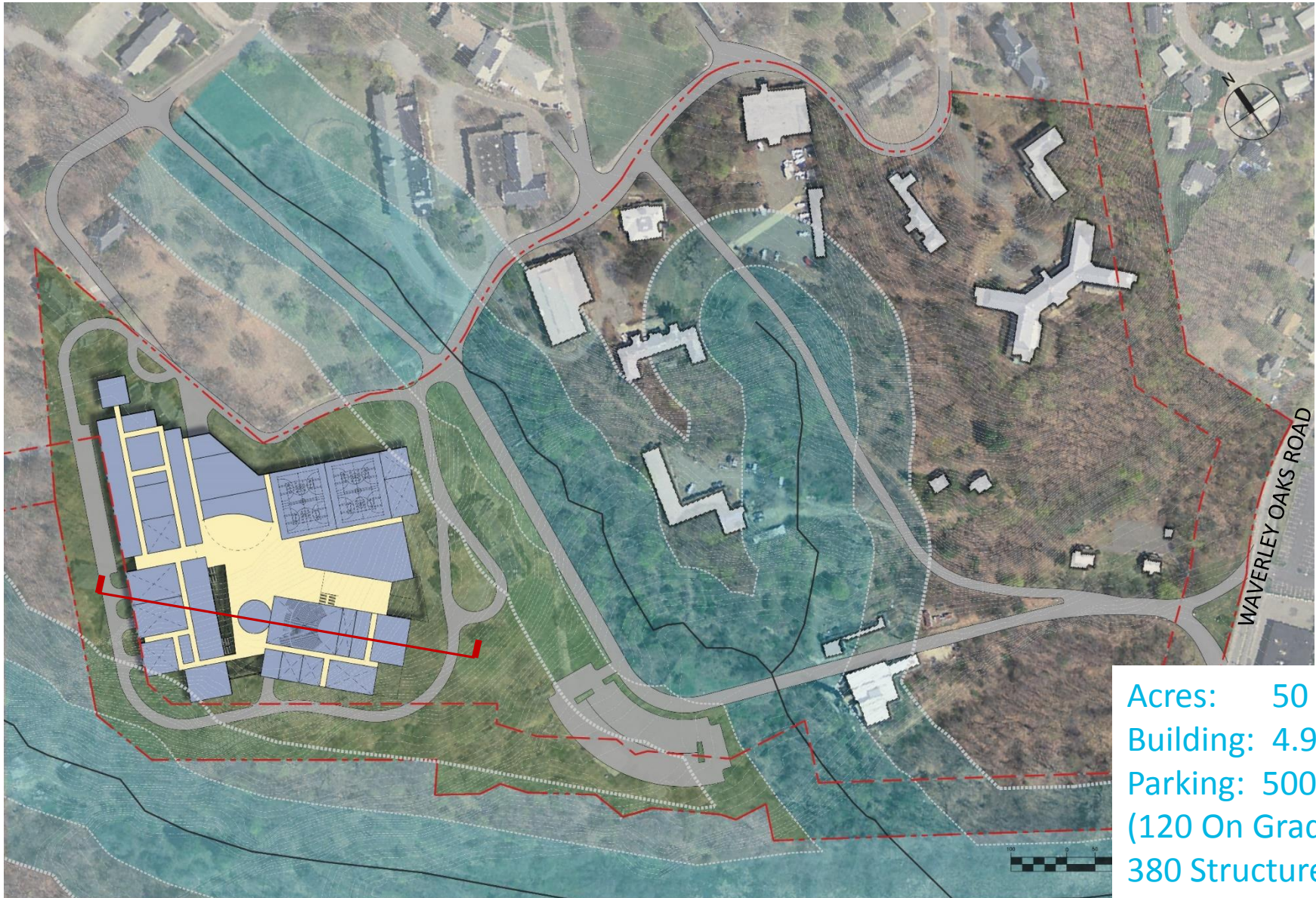
+ 650 HS

Existing Conditions - Former Fernald School Parcel



 Wetlands and buffers

Acres: 50 Non CPA
140 CPA



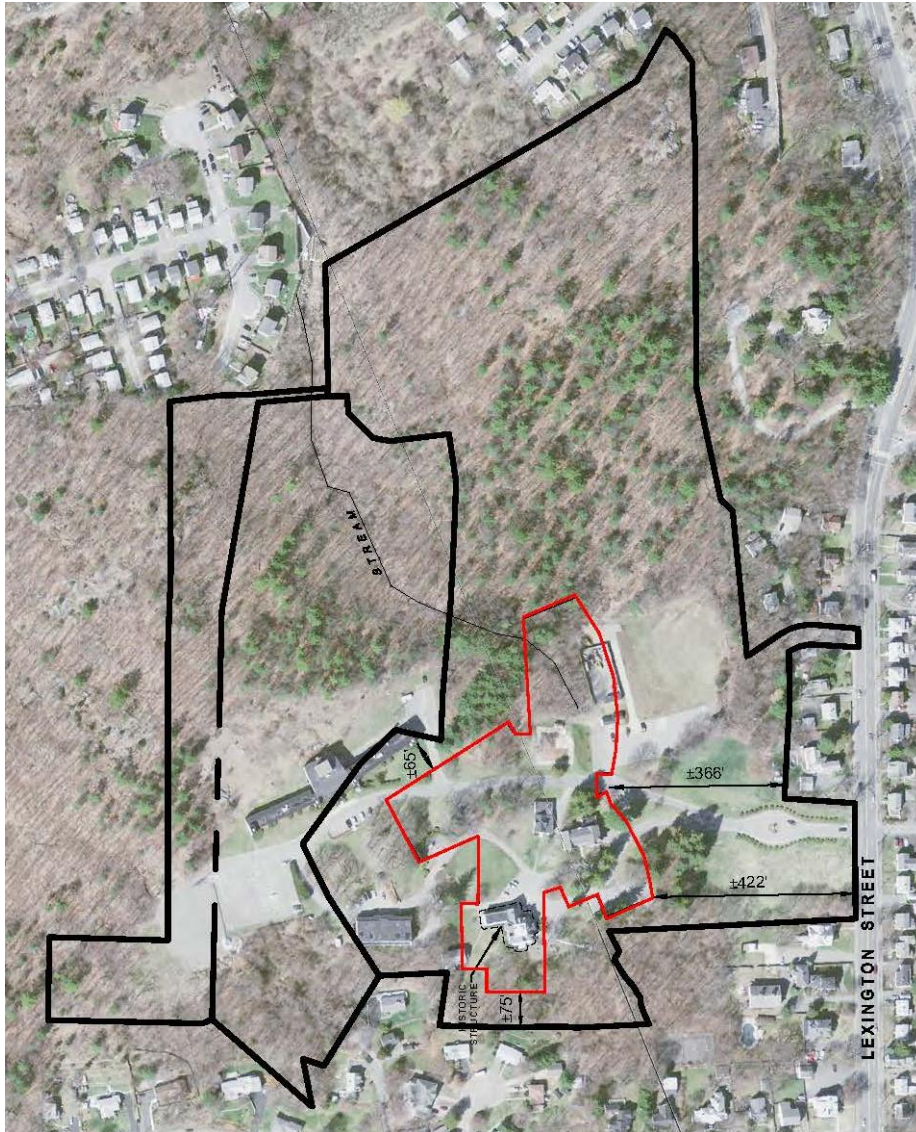
Acres: 50 Acres
Building: 4.9 Acres
Parking: 500 Spaces
(120 On Grade +
380 Structured)

Existing Conditions - Stigmatine Fathers Parcel



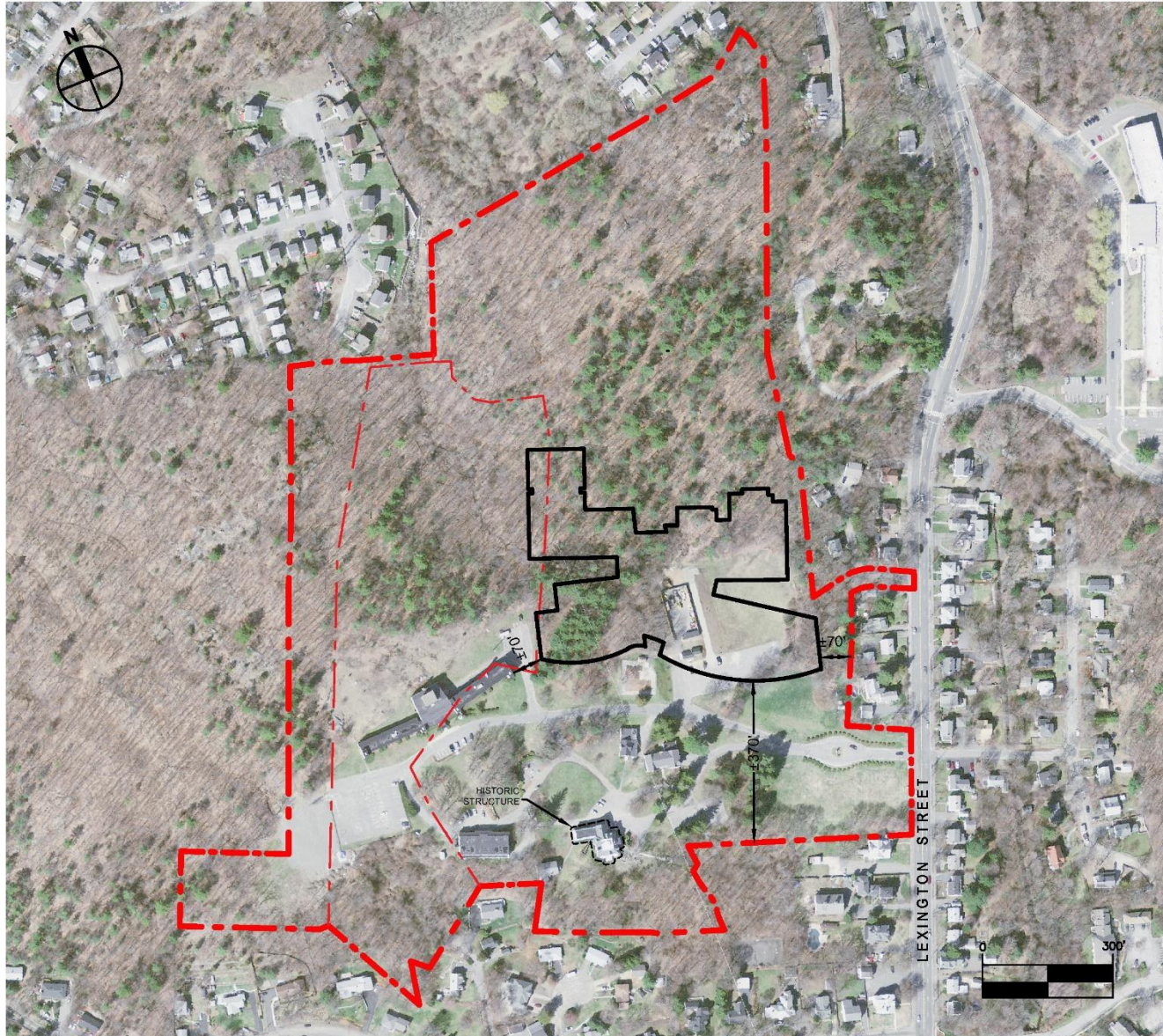
Acres: 46.03 HS
Building 4.5 Acres HS
Parking : 650 HS

4 Building Test Fit - Stigmatine Fathers Parcel



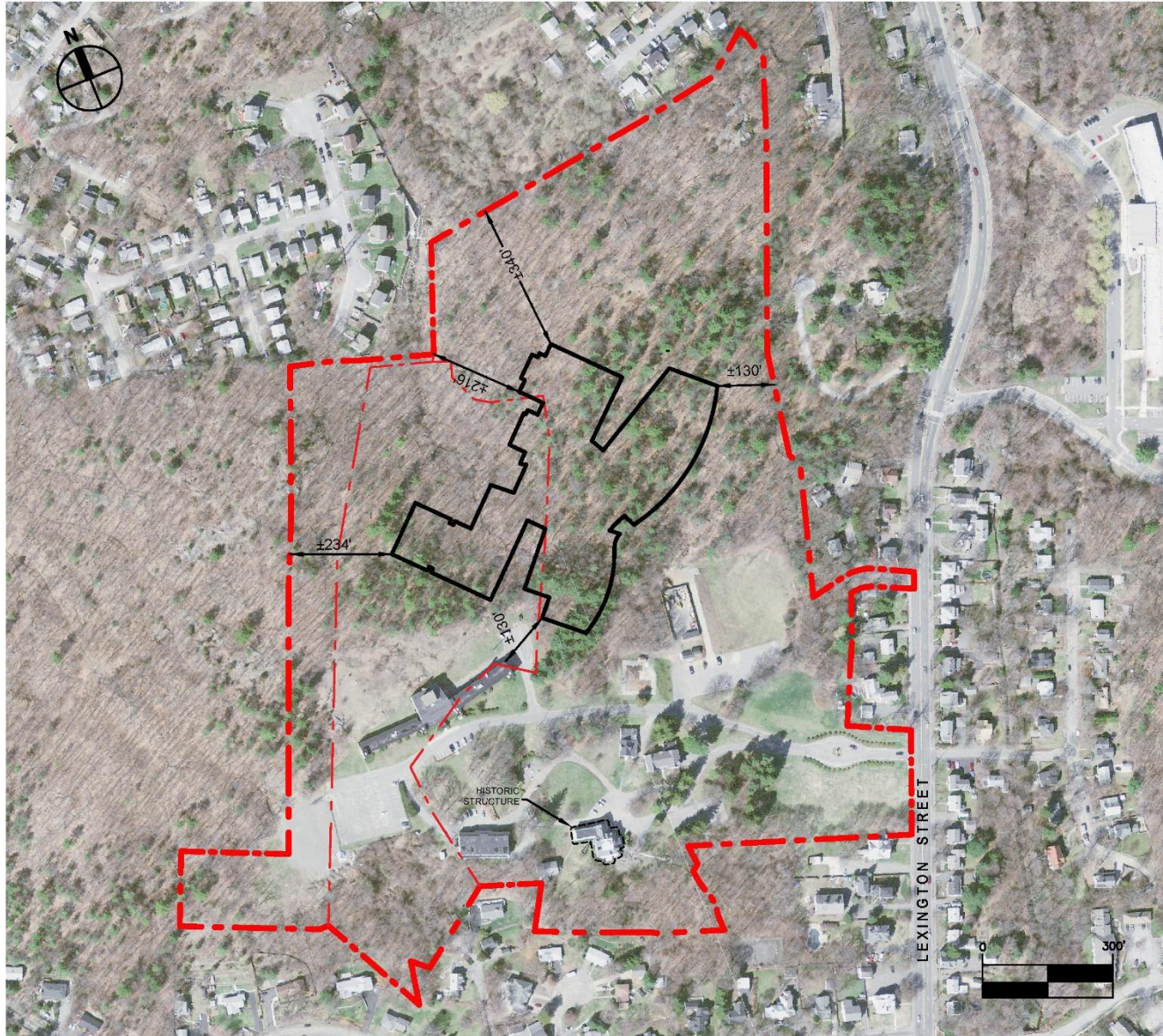
Acres: 46.03 HS
Building: 4.5 Acres HS
Parking : 650 HS

4 Building Test Fit - Stigmatine Fathers Parcel



Acres: 46.03 HS
Building: 4.5 Acres HS
Parking : 650 HS

4 Building Test Fit - Stigmatine Fathers Parcel



Acres: 46.03 HS
Building: 4.5 Acres HS
Parking : 650 HS



1. Community Impact for 3-4 Years

- No after-school or weekend use of facilities
 - SAT/ACT exams, Athletics, Fine and Performing Arts, community events
- No building rentals during construction: Impact 567 unique community based organizations who rent space at WHS during one year
 - Financial Impact to City/District: \$200,000.
- No Reagle Players Performances or Practices





2. Safety and Security Impact for 3-4 Years

- Very limited on-site parking—
 - City will be responsible for satellite parking for students and staff-500 cars. What happens if someone has a personal or family emergency?
 - Shuttle buses from satellite location
- Evacuations/fire drills—where and how will the students exit off property
- Emergency vehicles access to the property
- Workers on site during the school day
- Snow Removal



3. Academic and Educational Impact for 3-4 Years

- Disruption/noise will impact instruction and learning (emergent bilinguals and students with disabilities).
- Ventilation: Windows will be open resulting in dirt/dust in rooms
- Limited after-school support because of lack of student and adult parking
- Potential increase of attendance/tardiness issues as factors (shuttle and construction traffic)
- Limited to no school events: fine arts, athletics, senior activities will need to take place at other venues impacting other schools and City.
- Kennedy Middle School will be negatively impacted during construction
- Limited family access to building



7 Open Discussion: Waltham City Council and School Committee

