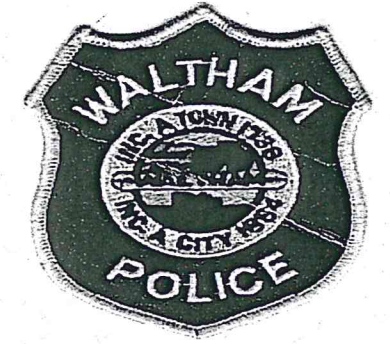
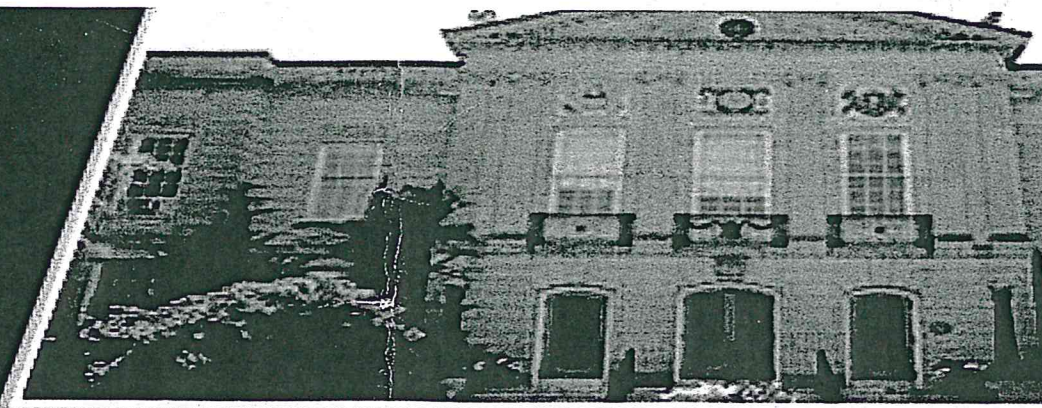


WALTHAM
MASSACHUSETTS
"The Watch City"



New Fire Station Addition and Administration Building Waltham Fire Department

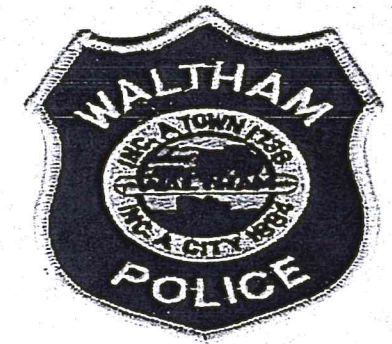
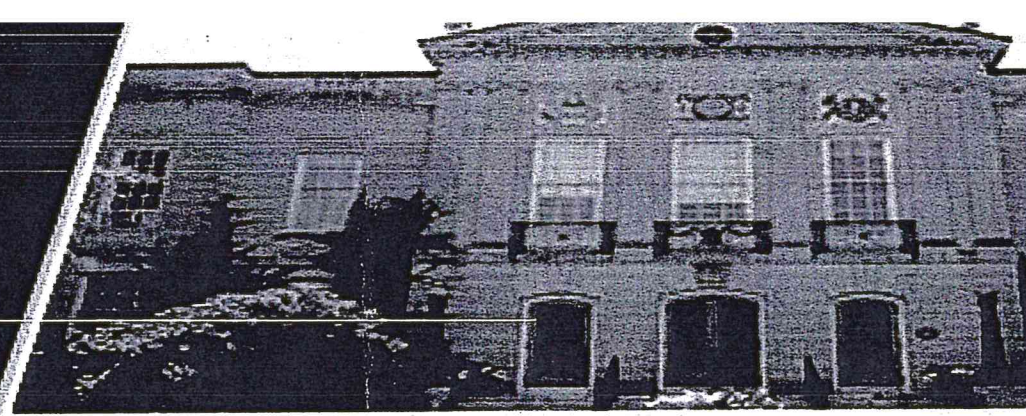
Designer Interview

CDR Maguire Group Inc.

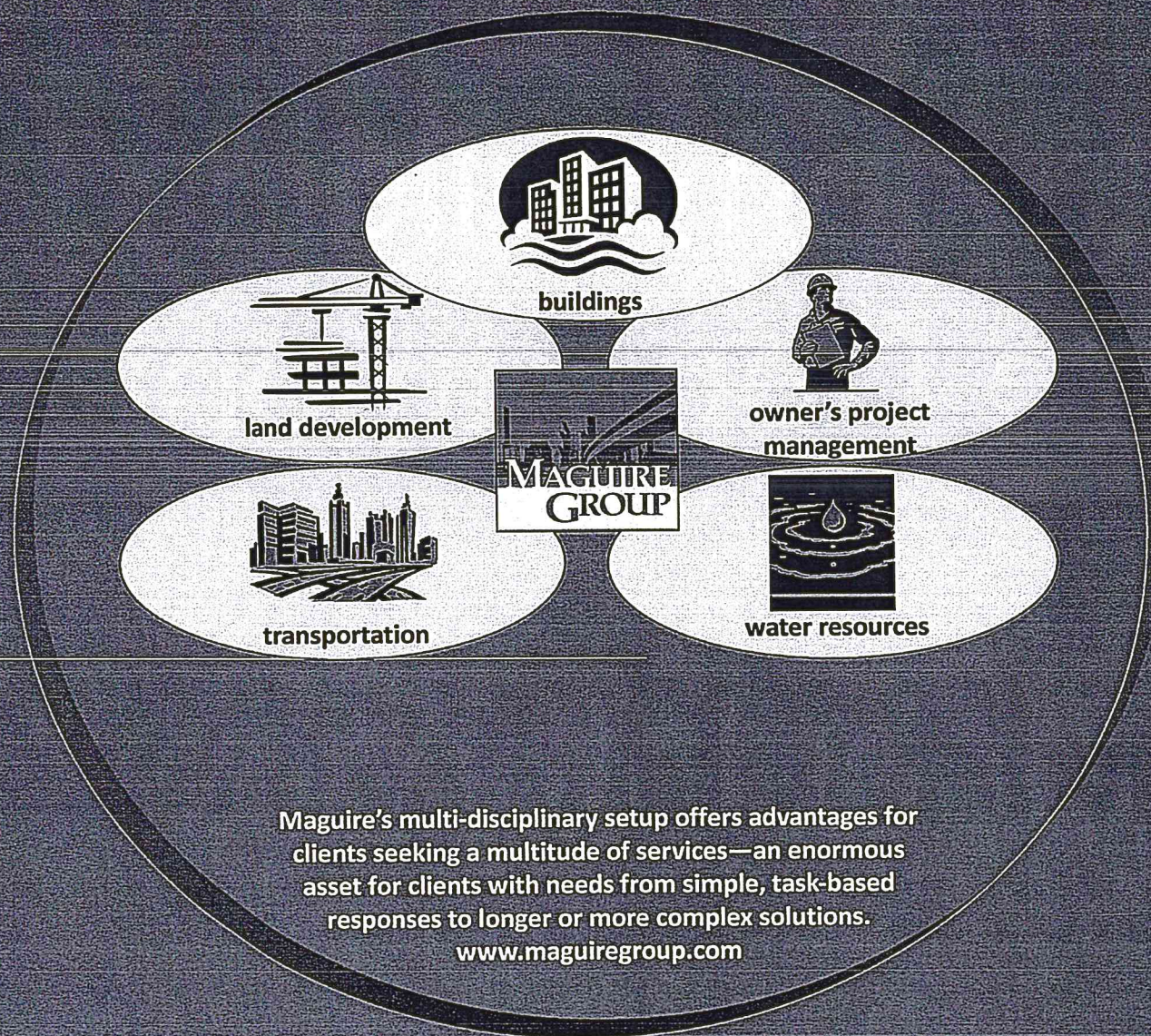


WALTHAM MASSACHUSETTS

"The Watch City"

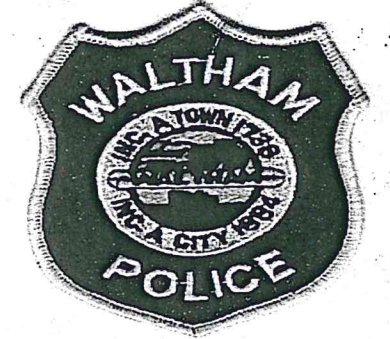
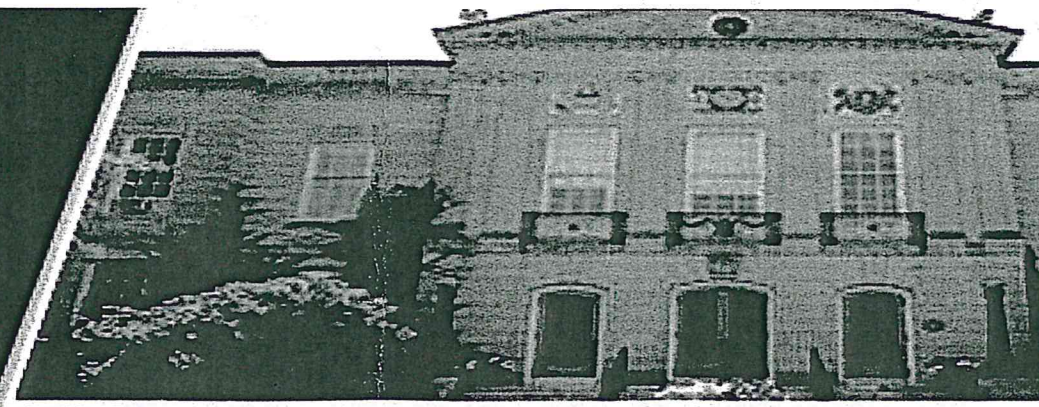


- Maguire Group is a national, award-winning full-service A/E and construction project management with offices in MA, RI, CT, FL, CO, VI and PA
- Local offices in Milton staffed with experienced professionals backed by specialized resources
- Past Experience with Waltham projects
- Offers full complement of services through its varied and responsive units:
 - Buildings / A&E
 - Land Development / Environmental
 - Owner's Project Management (OPM)
 - Transportation
 - Water Resources



WALTHAM MASSACHUSETTS

"The Watch City"



Project Manager: *Mark Saccoccio, AIA, NCARB*
Years of Experience: *30 years experience*
Projects:

- Smithfield Police
- Warwick Fire Station
- Cranston Fire Station
- Brewster Fire Headquarters
- Millis Police Station
- Cranston Police

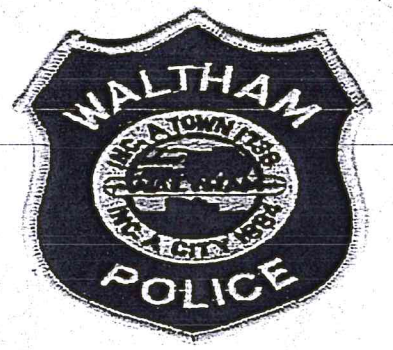
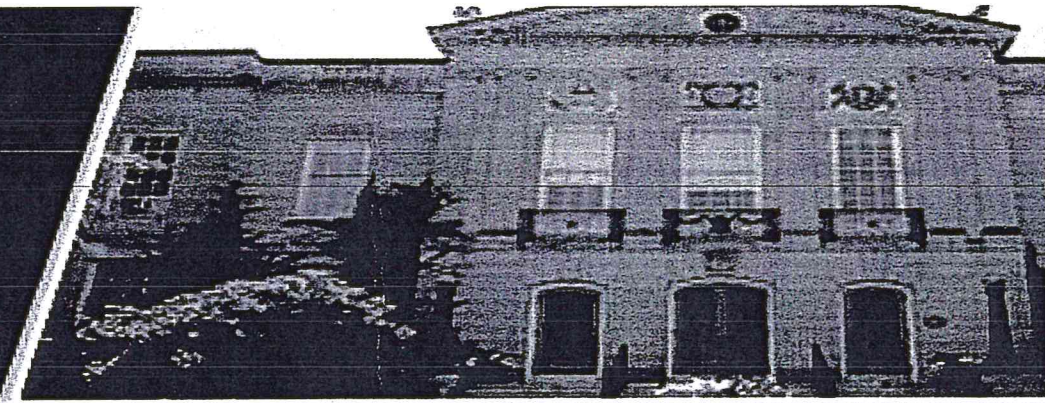
Project Architect: *Steve Guglielmo, AIA, NCARB, LEED*
Years of Experience: *30 years experience*
Projects:

- Cranston Police
- Warwick Fire Station
- Cranston Fire Station
- Burrillville Police Station
- Pawtucket Public Safety Study



WALTHAM MASSACHUSETTS

"The Watch City"



Project Team

The City of Waltham
Design Services for the Central Police and Fire Station



Regional Director
CDR Maguire Inc.
Richard A. Bernardo, P.E.
MA PE #42672

Principal-In-Charge
CDR Maguire Inc.
Mark Saccoccio, NCARB, AIA
MA RA #9598

Project Architect
CDR Maguire Inc.
Steve Guglielmo AIA, NCARB, LEED AP
MA RA #30822



Project Manager
CDR Maguire Inc.
Ron Stevenson

Production Team
CDR Maguire Inc.
Leo Grenier
Tom Imondi
Kevin G. Chan

Specification and Document
CDR Maguire Inc.
Victor LaPerche

Structural
CDR Maguire Inc.
Jitendra Shah, P.E.
MA PE #35613

Geotechnical
CDR Maguire Inc.
David Nacci, P.E.
MA PE #35713

Civil
CDR Maguire Inc.
James Jackson, P.E.
MA PE #42563
Robin Dyer, P.E.
MA PE #45783

Sustainability
CDR Maguire Inc.
Andrew Pellegrini, MCPPO

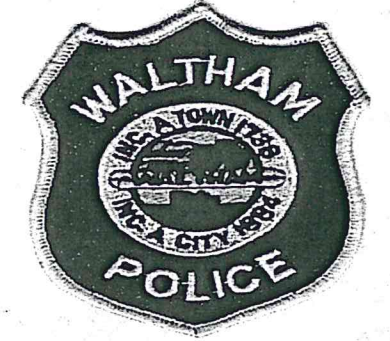
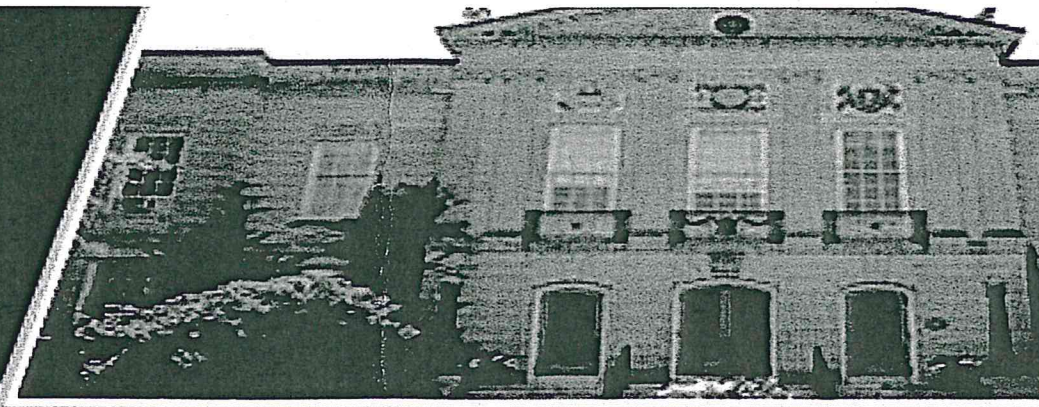
RDK Engineers
Principal-in-Charge
Daniel J. Wall, P.E., LEED AP,
MCPPO
MA PE #38978
Mechanical
Michael Peugh, P.E., LEED AP
MA PE #45466
Electrical/Telecommunications
Gilbert Martin, P.E., LEED AP
MA PE #33353
Plumbing/Fire Protection
Rand J. Refrigeri, P.E.
MA PE #30394

Landscape Arch.
Copley Wolff Design Group
(WBE)
Lynn Wolff, FASLA



WALTHAM MASSACHUSETTS

"The Watch City"



Relevant Similar Projects

Waltham Moody St.

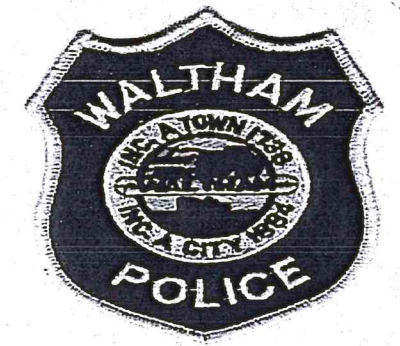
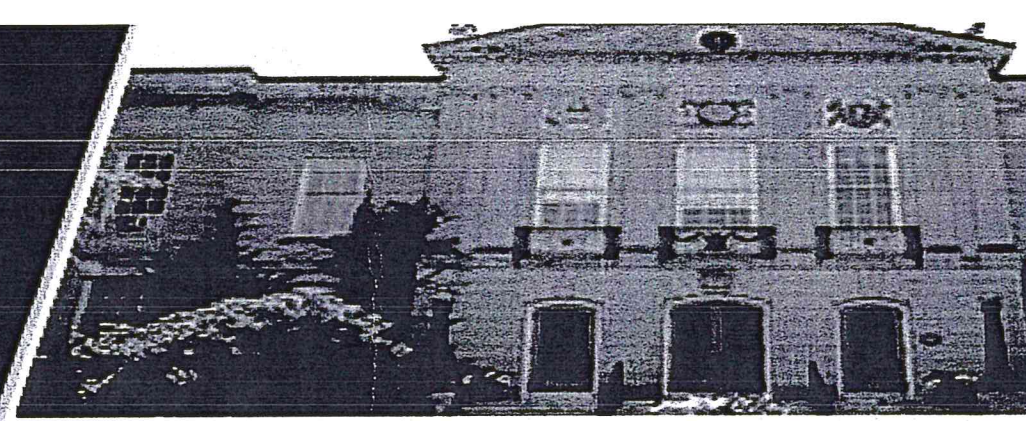


Waltham Police



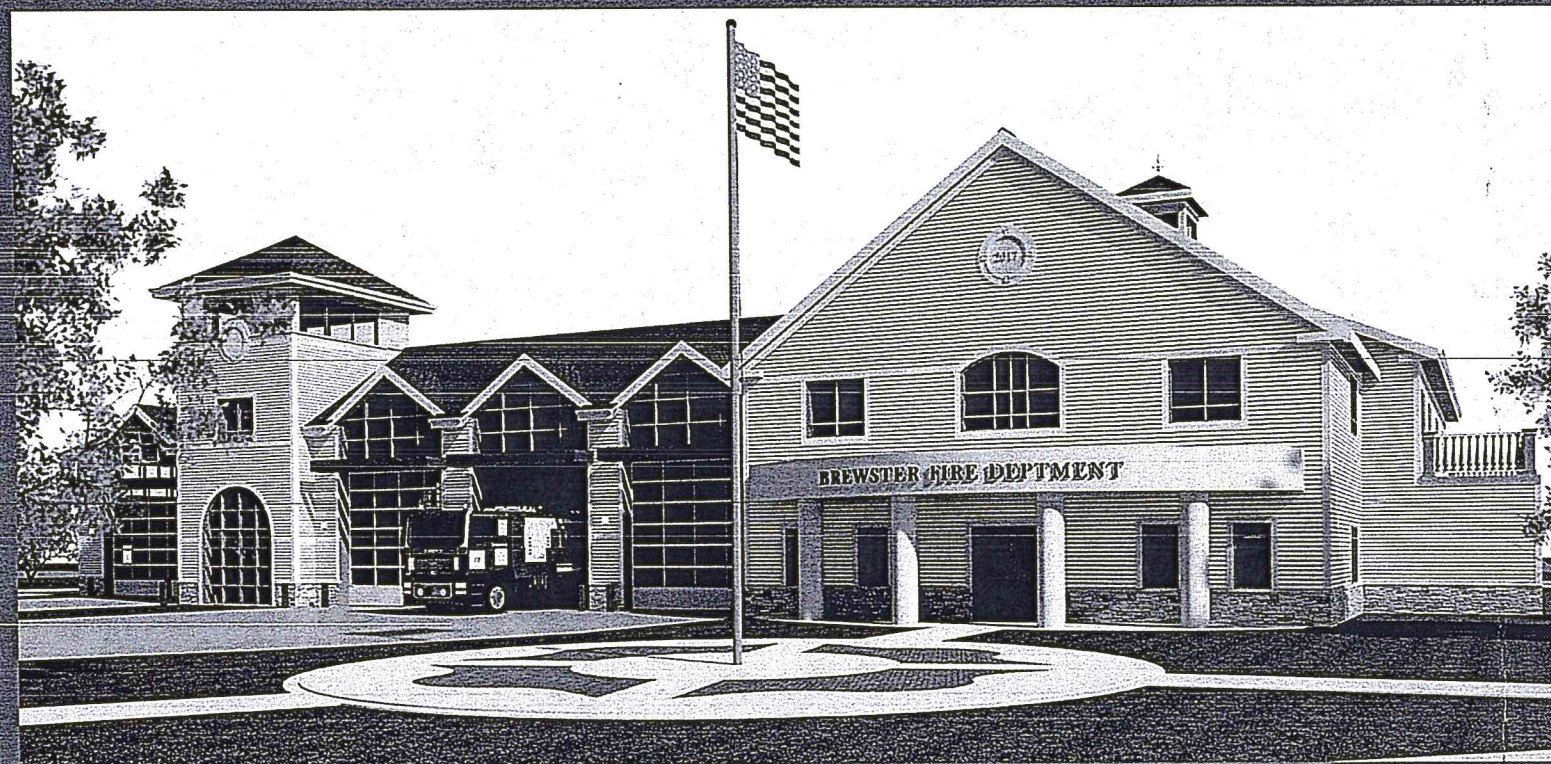
WALTHAM MASSACHUSETTS

"The Watch City"



Relevant Similar Projects

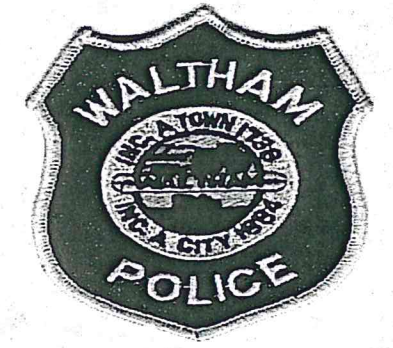
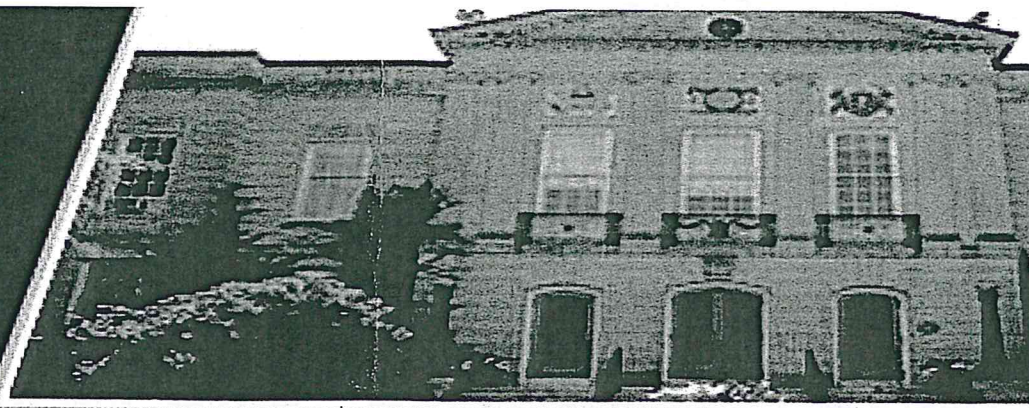
Brewster



Warwick



WALTHAM MASSACHUSETTS *"The Watch City"*

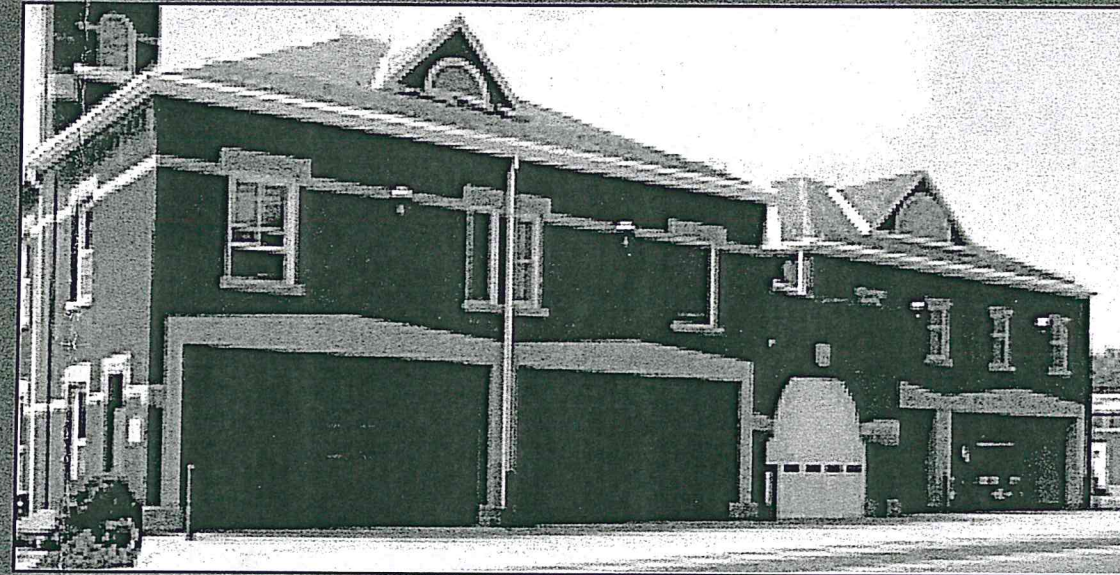


Relevant Similar Projects

Cranston



Westborough

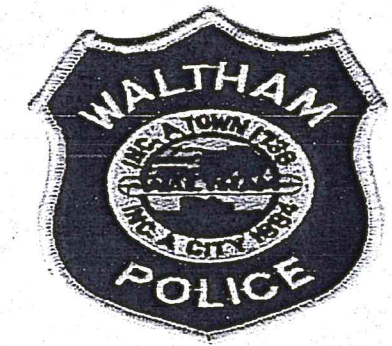
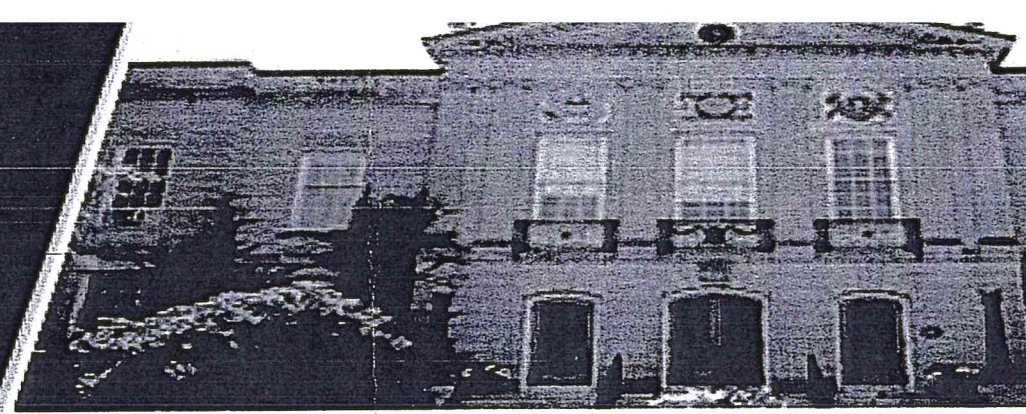


Concord



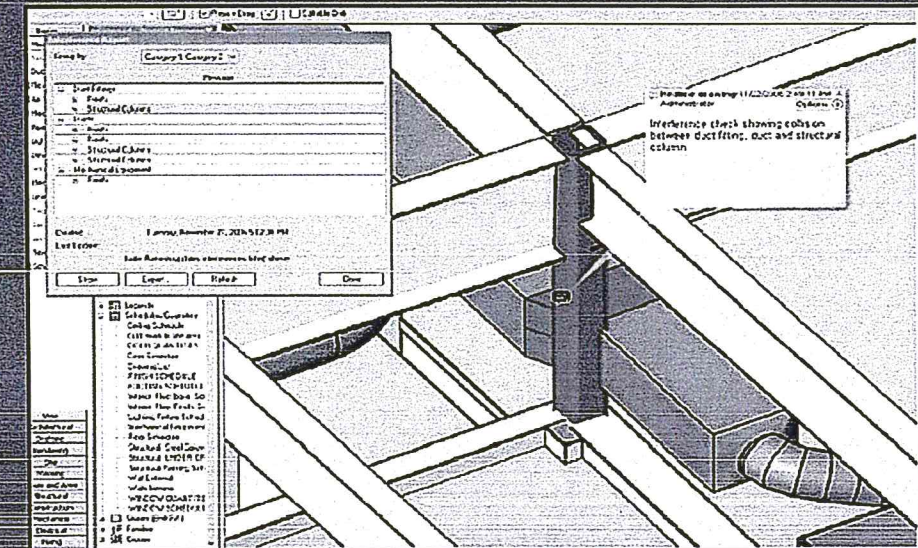
WALTHAM MASSACHUSETTS

"The Watch City"



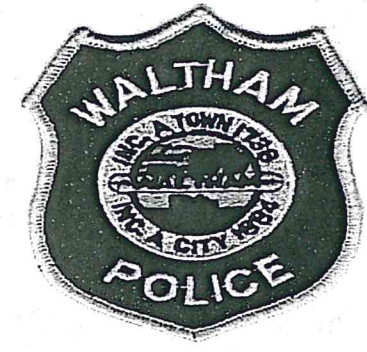
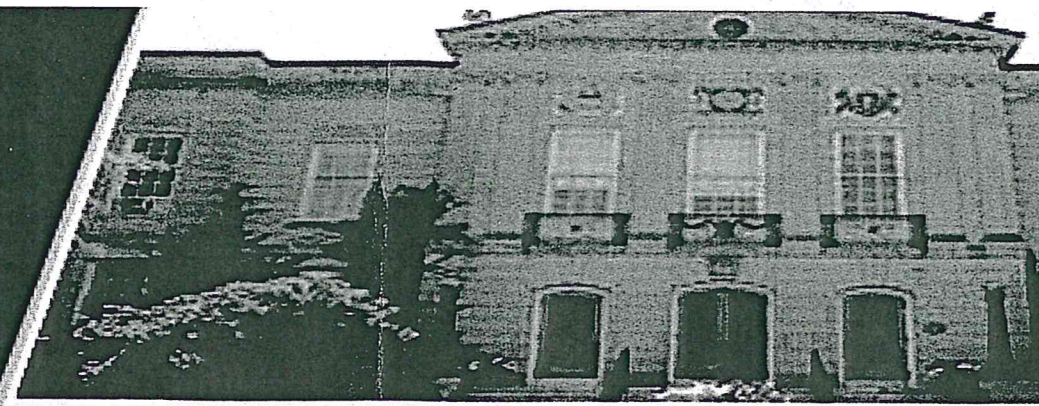
Building Information Modeling

- Utilizing Autodesk's Revit Software
- "Construct" the Building via a 3D Computer Model
- Understand Potential Conflicts and Issues
- Reduce RFIs, Change Orders and Construction Impacts
- Proactive, Advanced Conflict Resolution
- Increased Building Systems Efficiency in Design and Construction



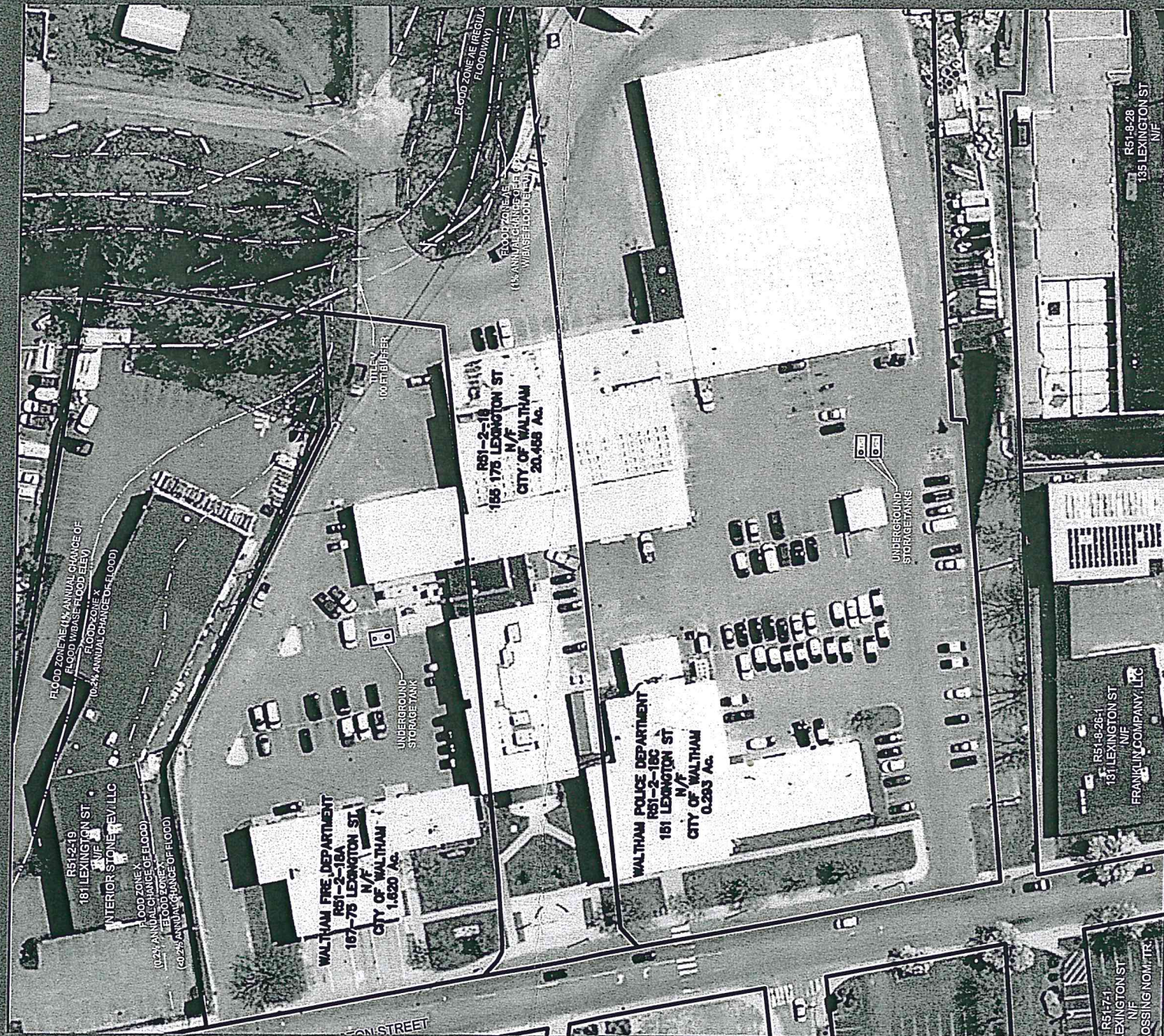
WALTHAM MASSACHUSETTS

"The Watch City"

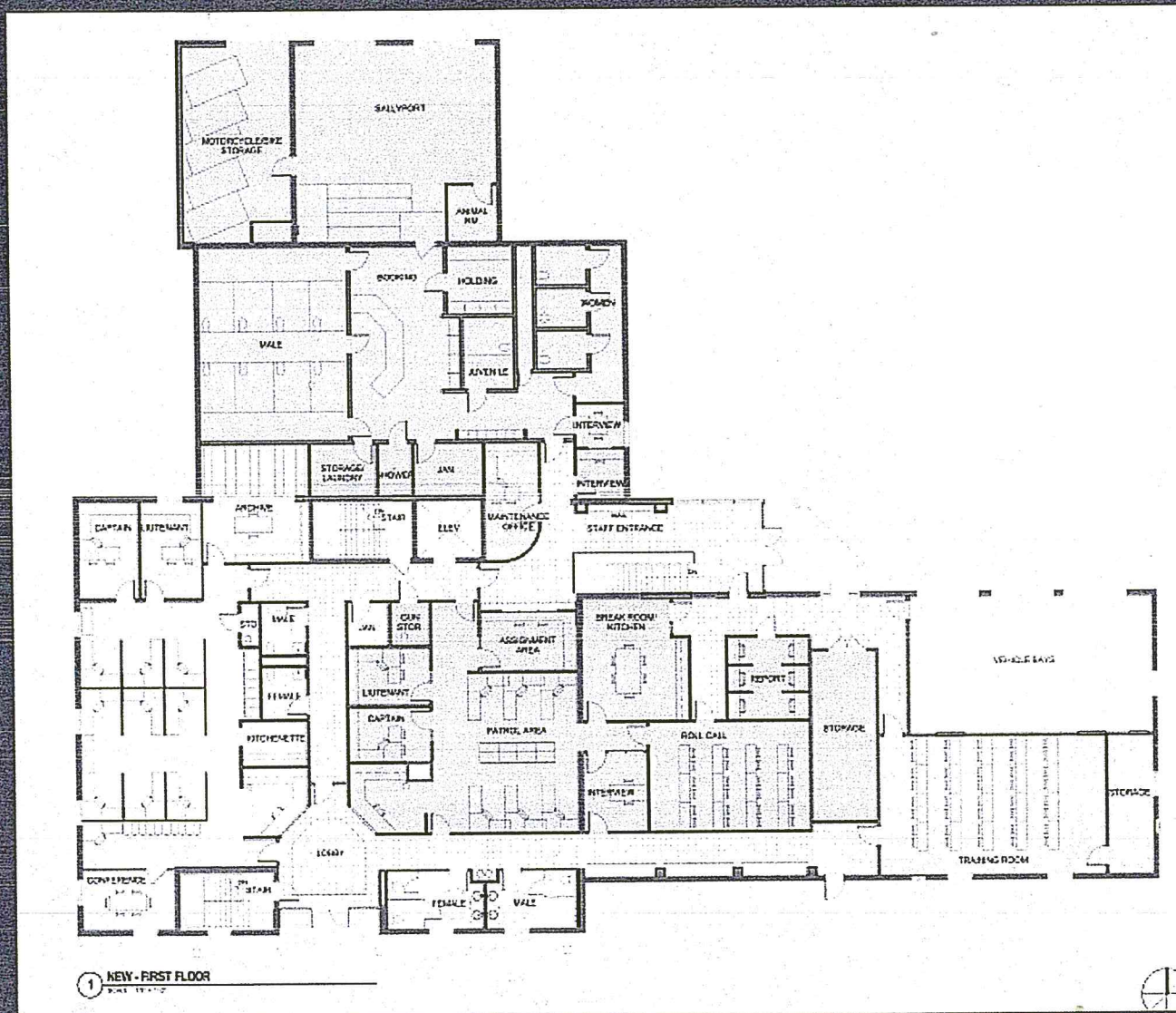
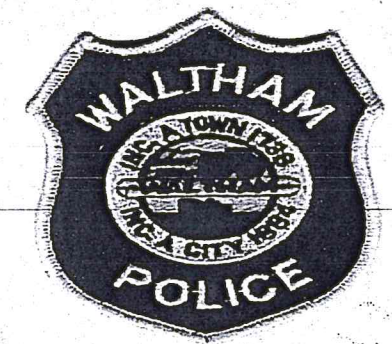
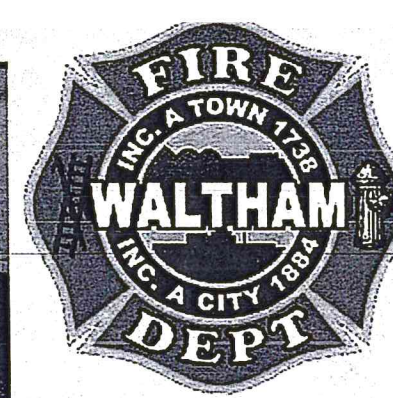
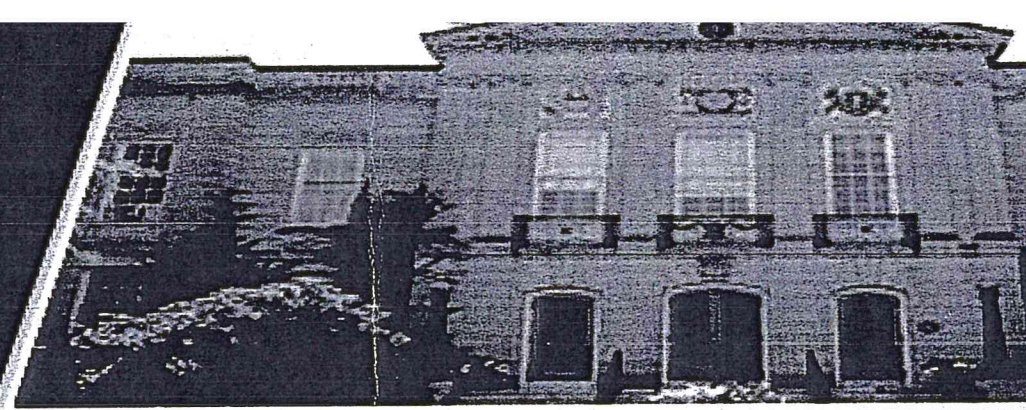


Understanding the Scope

- Evaluate Existing Building and Site



WALTHAM MASSACHUSETTS *"The Watch City"*

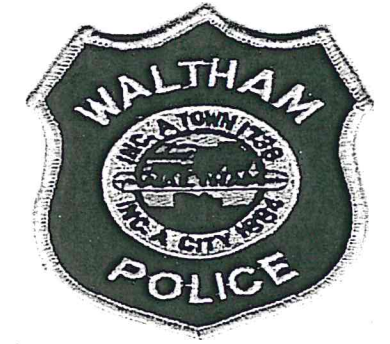
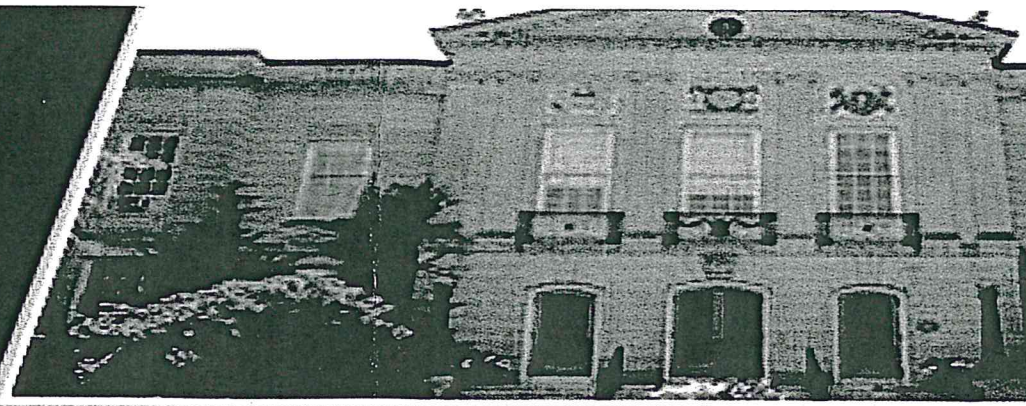


Understanding the Scope

- Evaluate Existing Building and Site
- Interview Staff for Space Requirements and Equipment
- Program For Current and Future Growth
- Develop Schematic Floor Plans & Phasing Plans
- Develop phased costs and funding approach
- Develop phasing schedule and mitigation plans

WALTHAM MASSACHUSETTS

"The Watch City"



Closing Thoughts:

- **Maguire provides hands-on approach to problem solving.**
- **Ready to go day one...CDR had the history to begin work immediately**
- **Maguire Group provides a comprehensive depth of resources.**
- **Consistently design functional, affordable and durable architectural solutions to support our public safety first responders**



Questions?



