

CITY OF WALTHAM
CITY CLERK'S OFFICE

2021 MAR 24 A 8:57

RECEIVED

Notice is hereby given that a Community Outreach Meeting for proposed Marijuana Establishments is scheduled for April 15th at 7pm at the below Zoom Meeting. The proposed Retail/Delivery Marijuana Establishments are anticipated to be located at 1256 Main St, Waltham MA. There will be an opportunity for the public to ask questions.

We will also accept questions submitted in advance and respond during the meeting. Please email questions to: questions@1256MainSt.com

At least 24 hours before the meeting all meeting materials will be posted at: 1256MainSt.com

Thursday, April 15th – 7:00 pm

Marijuana Establishment Community Outreach Meeting

Join Zoom Meeting

<https://us02web.zoom.us/j/84270564562?pwd=bG50OWpoY3cyRy8rSHppQmhrem9aUT09>

Meeting ID: 842 7056 4562

Password: 702976

Or Dial by your location

1 929 205 6099 US

All participants are required to enter their first and last name as their screen name in order to be admitted to the meeting. Once the meeting starts all participants except for the speaker will be on mute. If you would like to ask a question, please use the "Raise Hand" feature or post it in the chat room.

CITY OF WALTHAM
CITY PLANNING OFFICE

2021 MAR 24 A 8:57

RECEIVED

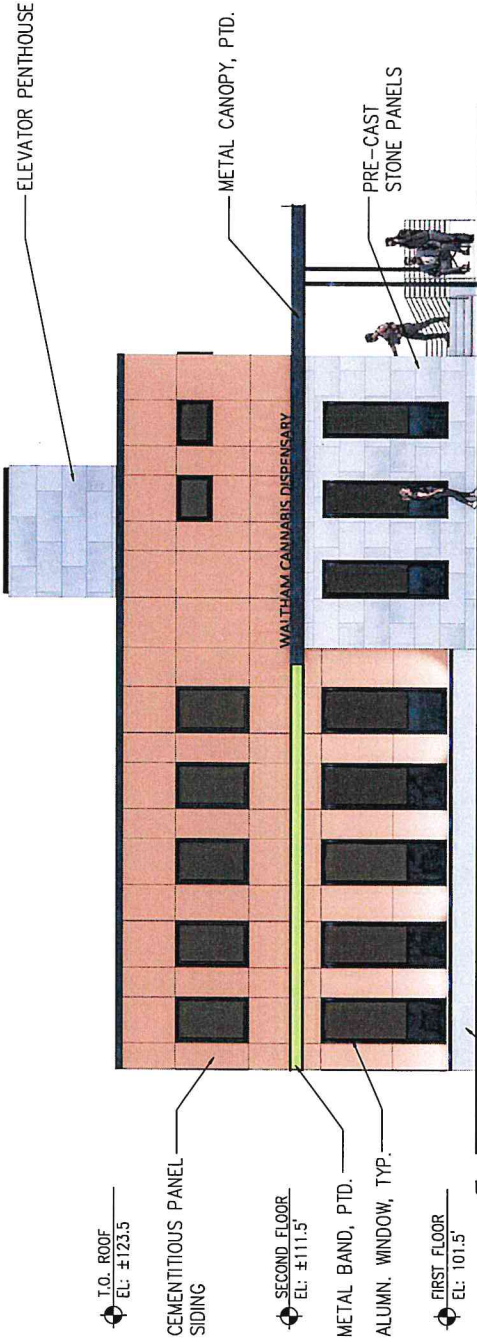


SEGER ARCHITECTS, INC.
10 Derby Square, Salem, MA
p. 978-744-0208 johnseger@segerarchitects.com

Waltham Cannabis Inc.
1256 Main Street
Waltham, MA

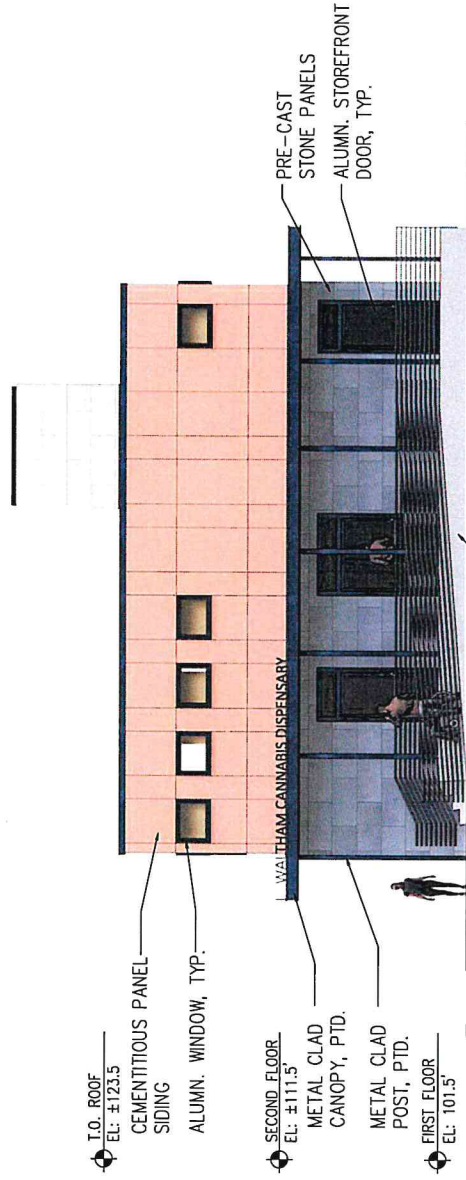
Project #: 20-008
Date: March 24, 2021
Scale: AS NOTED

A-2



1 North Elevation (Main Street)

SCALE: 1/8"=1'-0"



2 West Elevation (Cutting Lane)

SCALE: 1/8"=1'-0"

CITY OF WALTHAM
CITY ENGINEER'S OFFICE

2021 MAR 24 A 8:57

RECEIVED

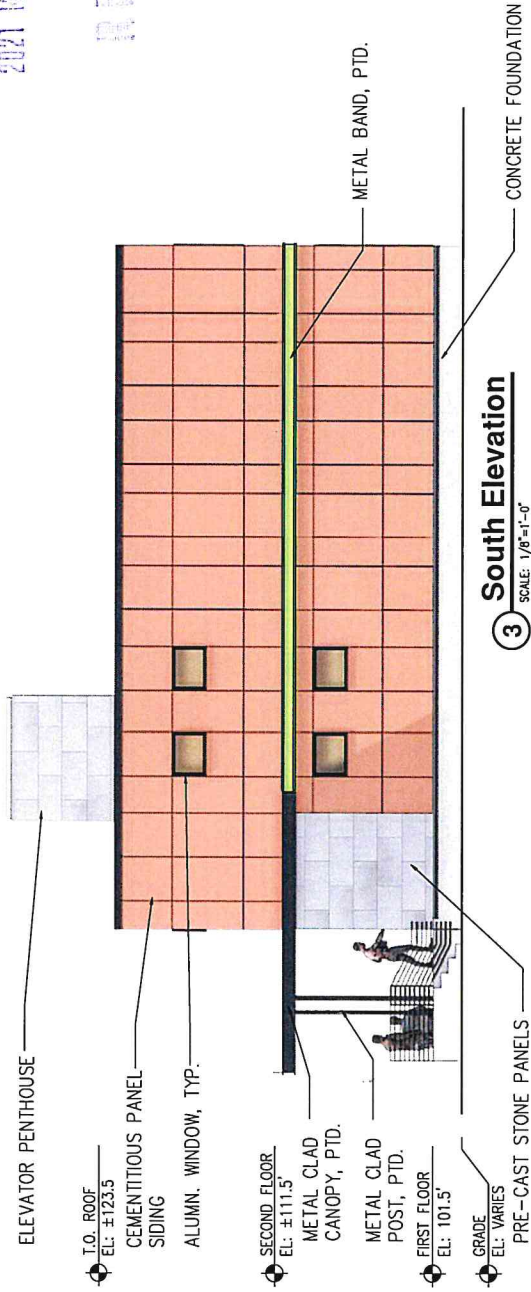


SEGER ARCHITECTS, INC.
10 Derby Square, Salem, MA
p. 978-744-0208 john.segger@segerarchitects.com

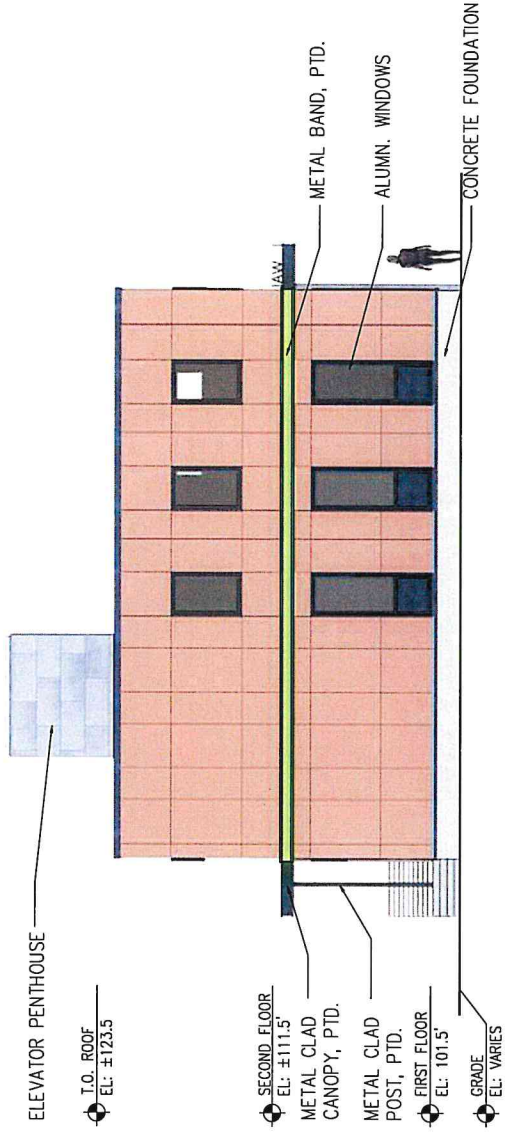
Waltham Cannabis Inc.
1256 Main Street
Waltham, MA

Project #: 20-008
Date: March 24, 2021
Scale: AS NOTED

A-3



3 South Elevation
SCALE: 1/8"=1'-0"



4 East Elevation
SCALE: 1/8"=1'-0"



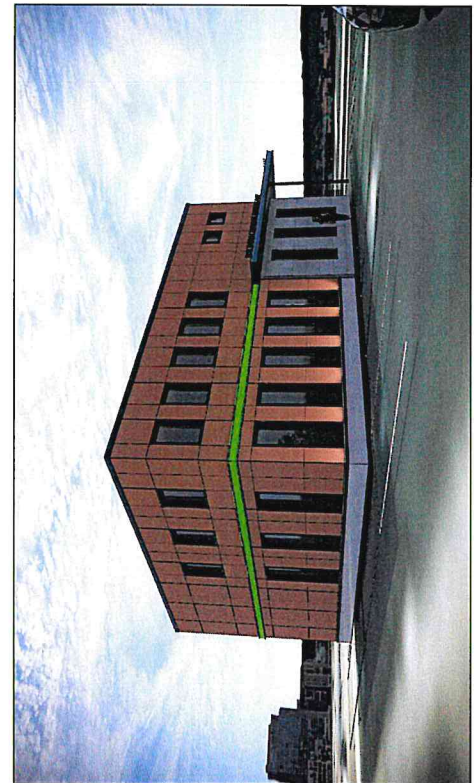
CITY OF WALTHAM
CITY ENGINEER'S OFFICE

2021 MAR 24 A 8:57

RECEIVED



VIEW FROM CORNER OF MAIN ST. & CUTTING LANE



VIEW FROM DRIVE ENTRY (MAIN STREET)



VIEW FROM CUTTING LANE