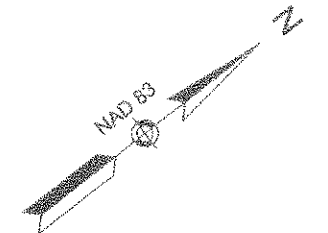
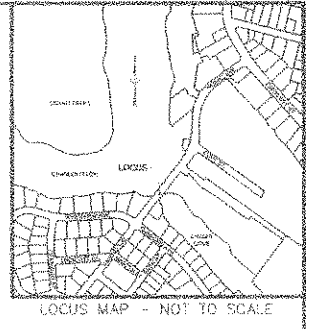


CITY OF WALTHAM  
CITY CLERK'S OFFICE  
2018 AUG -9 P 3:14  
**RECORDED**



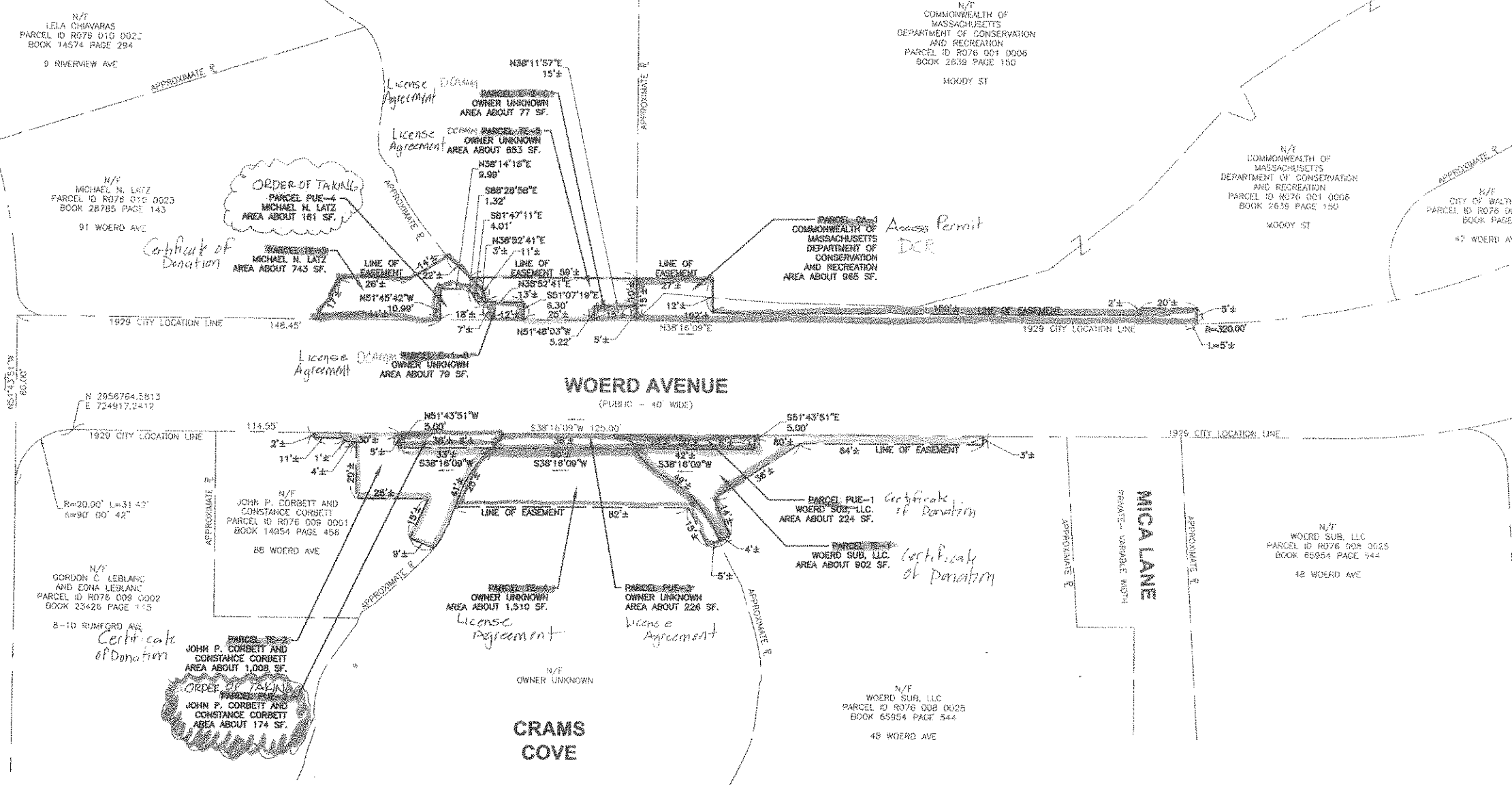
**CHARLES RIVER**

**RIVERVIEW AVENUE**  
(PUBLIC - 40' WIDE)

**RUMFORD AVENUE**  
(PUBLIC - 40' WIDE)

**COVE STREET**  
(PUBLIC - 40' WIDE)

**MICA LANE**  
PRIVATE - VARIABLE WIDTH



**PLAN REFERENCES**

- JANUARY 1998 CORRECTED PLAN OF CRESCENT PARK AT THE CITY OF WALTHAM, FILED IN PLAN BOOK 95, PLAN NO. 40 AT SOUTH MIDDLESEX COUNTY REGISTRY OF DEEDS.
- DECEMBER 1927 PLAN SHOWING RELOCATION & WIDENING OF WOERD AVENUE, APPROVED DECEMBER 30, 1929 BY CITY COUNCIL ORDER #11588, FILED AT THE CITY OF WALTHAM ENGINEERING DEPARTMENT.
- MAY 1937 PLAN AND PROFILE OF MARTYN STREET, APPROVED MAY 11, 1937 BY CITY COUNCIL ORDER #13317, FILED AS PLAN NO. 427 OF 1937 AT SOUTH MIDDLESEX COUNTY REGISTRY OF DEEDS.
- MAY 1937 PLAN AND PROFILE OF ENDICOTT STREET, APPROVED MAY 11, 1937 BY CITY COUNCIL ORDER #13318, FILED AS PLAN NO. 523 OF 1937 AT SOUTH MIDDLESEX COUNTY REGISTRY OF DEEDS.
- OCTOBER 1940 PLAN AND PROFILE OF COVE STREET, APPROVED OCTOBER 21, 1940 BY CITY COUNCIL ORDER #14117, FILED AS PLAN NO. 1018 OF 1940 AT SOUTH MIDDLESEX COUNTY REGISTRY OF DEEDS.

**GENERAL NOTES**

- THE RIGHT OF WAY LINES SHOWN ON THIS PLAN ARE THE DIRECT RESULT OF AN INSTRUMENT SURVEY PERFORMED ON THE GROUND BY GREEN INTERNATIONAL AFFILIATES, INC. ON OCTOBER 26, 2015, AND FROM PLANS AND DEEDS OF RECORD.
- BEARINGS ARE BASED UPON MASSACHUSETTS STATE PLANE COORDINATE SYSTEM MAINLAND ZONE (NAD 83).
- THE PERMANENT AND TEMPORARY EASEMENTS SHOWN HEREON ARE TAKEN BY CITY OF WALTHAM FOR BRIDGE IMPROVEMENTS.
- PARCEL CA-1 IS CONSTRUCTION ACCESS FOR TEMPORARY CONSTRUCTION ON COMMONWEALTH OF MASSACHUSETTS DEPARTMENT OF CONSERVATION AND RECREATION PROPERTY.



THE CERTIFICATIONS SHOWN HEREON ARE INTENDED TO MEET REGISTRY OF DEEDS REQUIREMENTS AND ARE NOT A CERTIFICATION TO TITLE OR OWNERSHIP OF PROPERTY SHOWN. OWNERS OF ADJOINING PROPERTIES ARE ACCORDING TO CURRENT CITY OF WALTHAM ASSESSOR'S RECORDS.

I HEREBY CERTIFY THAT THIS PLAN WAS PREPARED IN ACCORDANCE WITH THE RULES AND REGULATIONS OF THE REGISTERS OF DEEDS OF THE COMMONWEALTH OF MASSACHUSETTS.

I HEREBY CERTIFY THAT THE PROPERTY LINES SHOWN ARE THE LINES DIVIDING EXISTING OWNERSHIPS, AND THE LINES OF STREETS AND WAYS SHOWN ARE THOSE OF PUBLIC OR PRIVATE STREETS OR WAYS ALREADY ESTABLISHED, AND THAT NO NEW LINES FOR DIVISION OF EXISTING OWNERSHIP OR FOR NEW WAYS ARE SHOWN.



6/13/18 Patrick J. Schollard  
DATE: 6/13/18 PATRICK J. SCHOLLARD, P.L.S., #48436

**PLAN OF EASEMENTS  
WALTHAM, MASSACHUSETTS**  
**BRIDGE W-04-006  
WOERD AVENUE OVER  
CHARLES RIVER**

GREEN INTERNATIONAL AFFILIATES, INC.  
CIVIL & STRUCTURAL ENGINEERS  
238 LITTLETON ROAD, WESTFORD MA, 01886 978-923-0400

SCALE: 1" = 20' PROJECT NO: 13047.02  
DATE: JUNE 13, 2018 SHEET NO. 1 OF 1