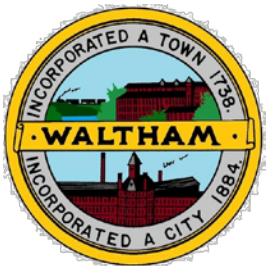


# WALTHAM COMPONENT OF THE WAYSIDE TRAIL

Public Meeting #3 –  
25% Review

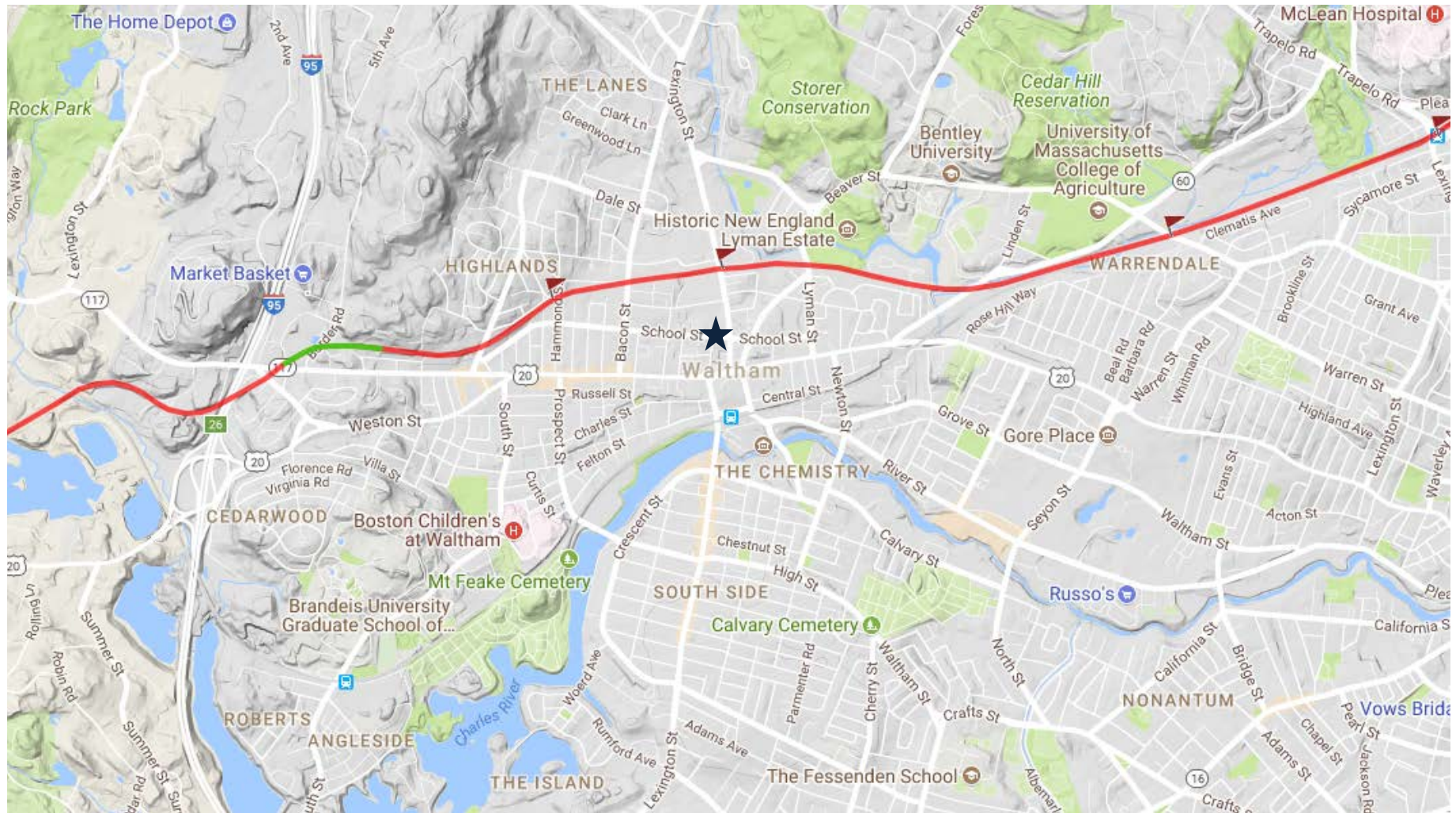
June 4, 2018



# AGENDA

- |                                     |                              |
|-------------------------------------|------------------------------|
| 1. Introduction                     | City of Waltham              |
| 2. Path History/Alignment           | Amy Archer, Pare Corporation |
| 3. Public Engagement Plan           | Amy Archer                   |
| 4. Design Details/Proposed Elements | Amy Archer                   |
| 5. Public Comment                   | Breakout Stations            |
| 6. Next Steps                       | Amy Archer                   |

# HISTORY AND PATH FORWARD



# PUBLIC ENGAGEMENT

- **Public Meeting #1 - Kick-off**
  - Review project history and alignment
  - Define scope and initial findings from existing conditions
  
- **Public Meeting #2 - Abutters**
  - Present design guidelines and preliminary approach
  - Breakout sessions for public input
  
- **Public Meeting #3 – 25% Review**

# PUBLIC ENGAGEMENT

## ENGAGEMENT GOAL

- Consult with Stakeholders
  - To inform stakeholders of project related information in a timely manner to ensure understanding.
  - To obtain stakeholder feedback on the design process that will be considered moving forward.

## ROLES & RESPONSIBILITIES

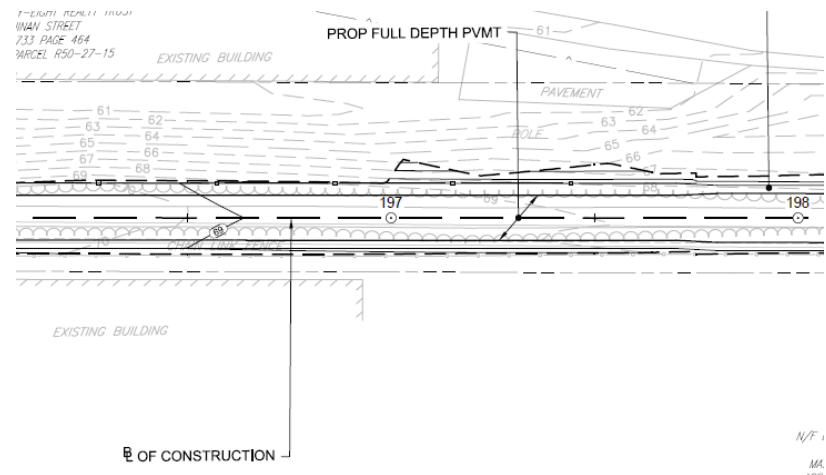
engage in the process in a manner that promotes **respectful civil discourse** and enhances mutual understanding of all stakeholder viewpoints.



# DESIGN DETAILS

## PLANTING GOALS

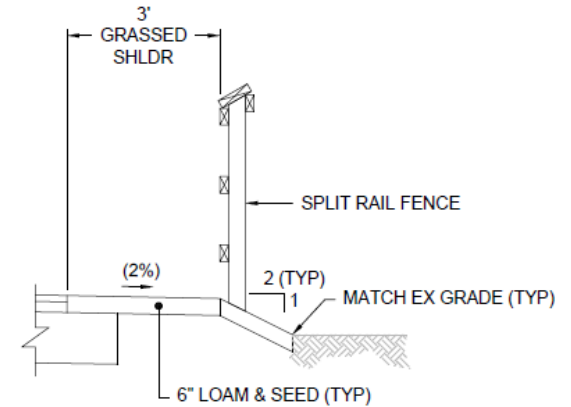
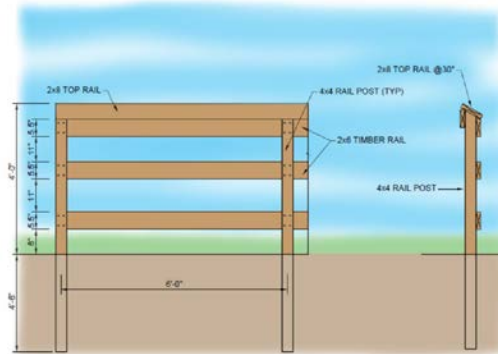
- Retain as many existing trees as possible (specs for minimally invasive construction methods)
- Replace trees over 14" caliper
- Mitigate impacts to Resource Areas (i.e. wetlands)
- Shrubs for added erosion protection as needed
- Regular intervals of shade in non-wooded areas



# DESIGN DETAILS

## EDGES

- Bridge crossings
- Steep drop-offs
- Wetlands
- Needed pedestrian/vehicular separation
- Needed pedestrian/rail separation

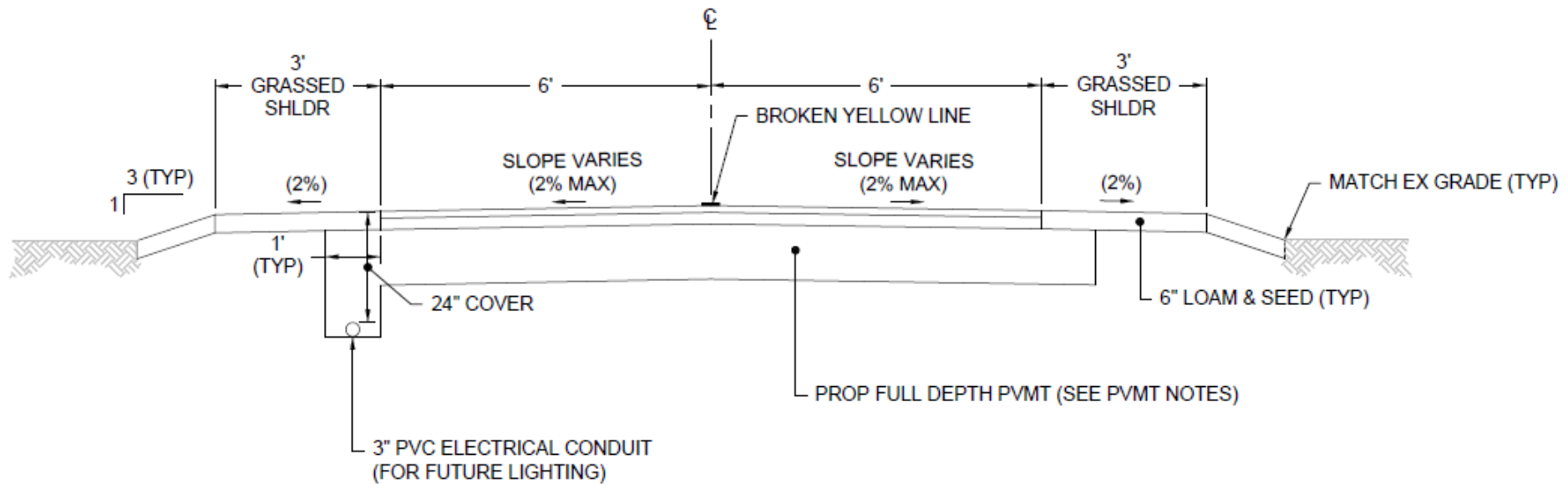


TYPICAL SECTION WITH SPLIT RAIL FENCE  
NOT TO SCALE



# DESIGN DETAILS

## TYPICAL

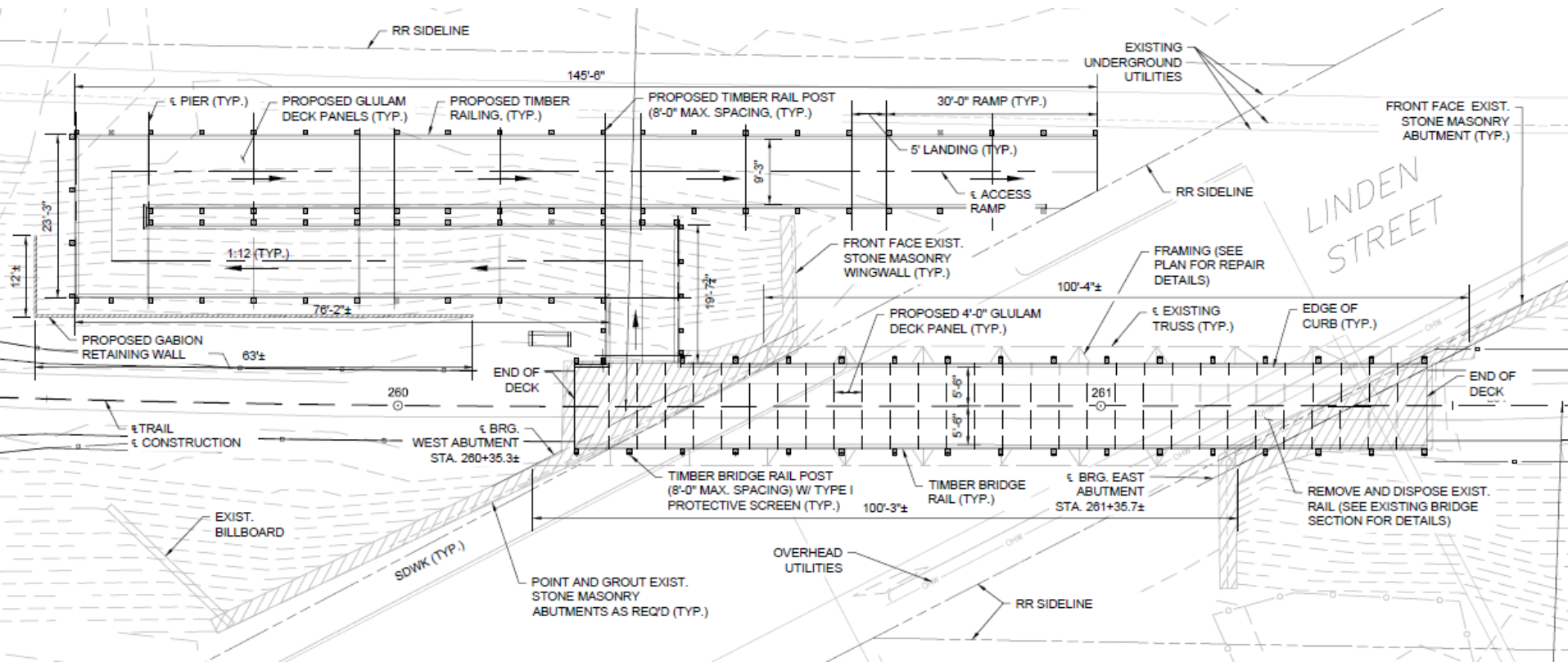


TYPICAL SECTION TRAIL  
NOT TO SCALE



# DESIGN DETAILS

## RAMP AT LINDEN



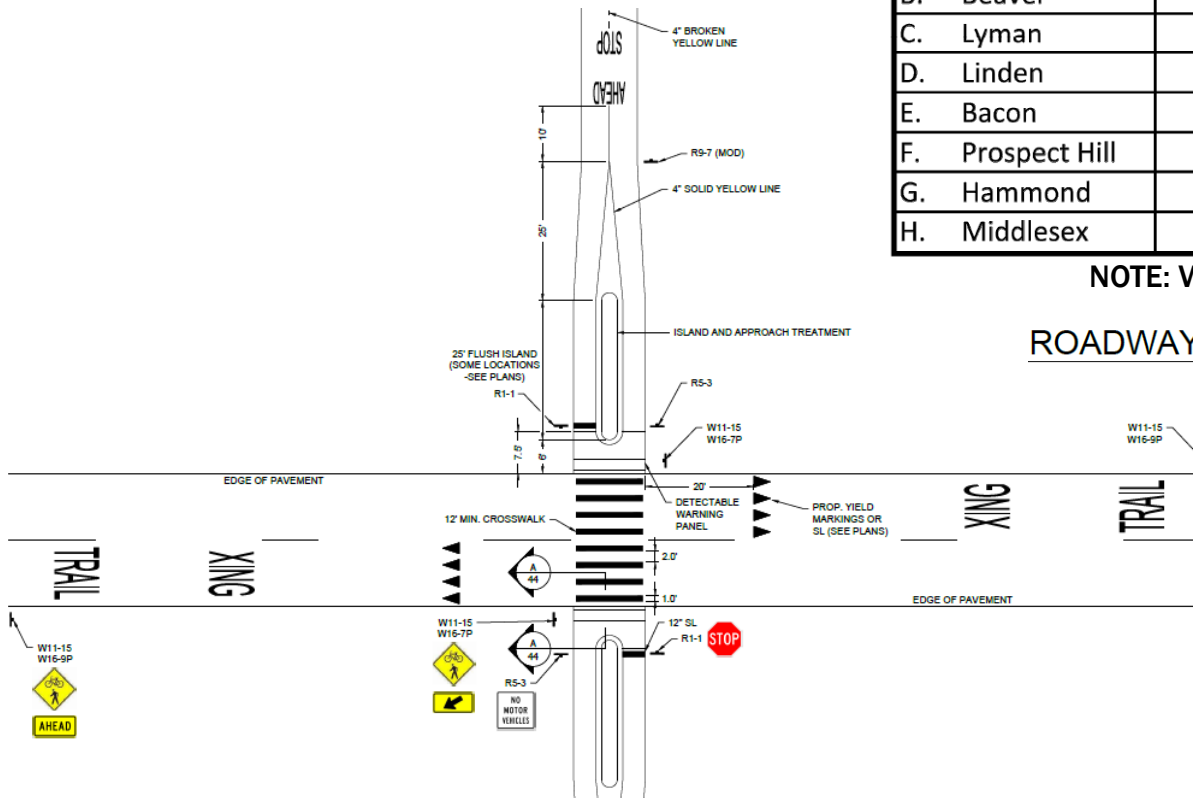
# CROSSINGS

Crossing	Roadway Volume (vehicles)	Projected Trail Volume (users)	Warrant
A. Lexington	1597	387	Full Signal
B. Beaver	1522	387	Full Signal
C. Lyman	1238	387	HAWK/Ped
D. Linden	1031	20	RRFB
E. Bacon	850	387	HAWK/Ped
F. Prospect Hill	782	387	RRFB
G. Hammond	277	387	Unsig
H. Middlesex	177	387	Unsig

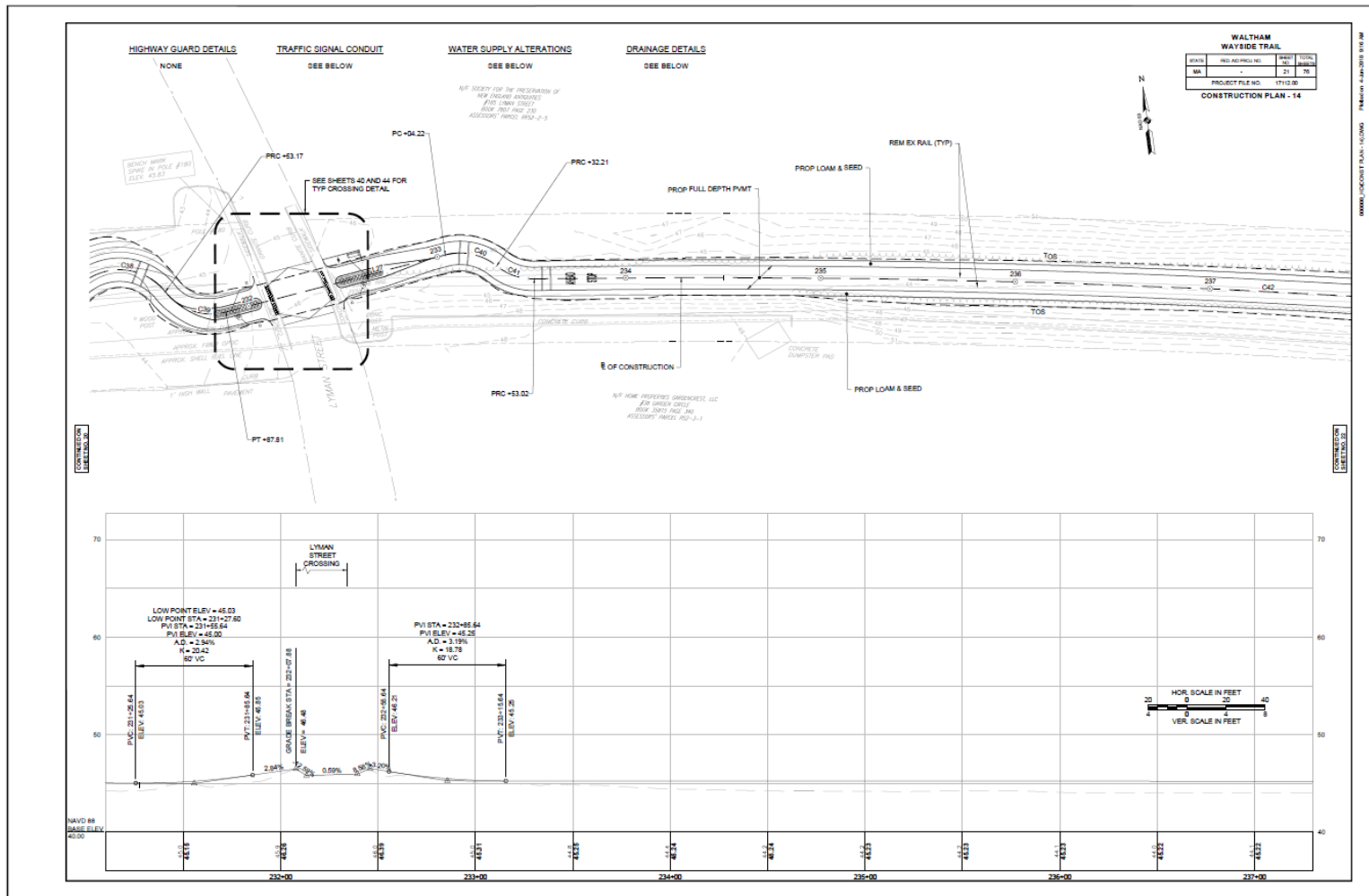
**NOTE: Volumes represent peak hour**

## ROADWAY CROSSING SIGNALIZATION

NOT TO SCALE



# BREAKOUT STATIONS



# BREAKOUT STATIONS



# WHAT'S NEXT?

- **Consultant Team advance to Final (75%/100%) Design**
- **Coordination with Local Commissions:**
  - **Conservation Commission – June 7**
  - **Traffic Commission – June 21**
- **Permitting as Necessary**



# THANK YOU!

- **Project Information & Online Comments on Planning Department Healthy Transportation Website**
  - <https://www.city.waltham.ma.us/planning-department/pages/walthams-wayside-trail-project>
- **Additional Comments can be mailed or emailed to:**
  - **Catherine Cagle – Planning Director**  
City of Waltham Planning Department  
119 School Street, Suite 25  
Waltham, MA 02451  
[ccagle@city.waltham.ma.us](mailto:ccagle@city.waltham.ma.us)
- **Please sign in, if you haven't already!**

