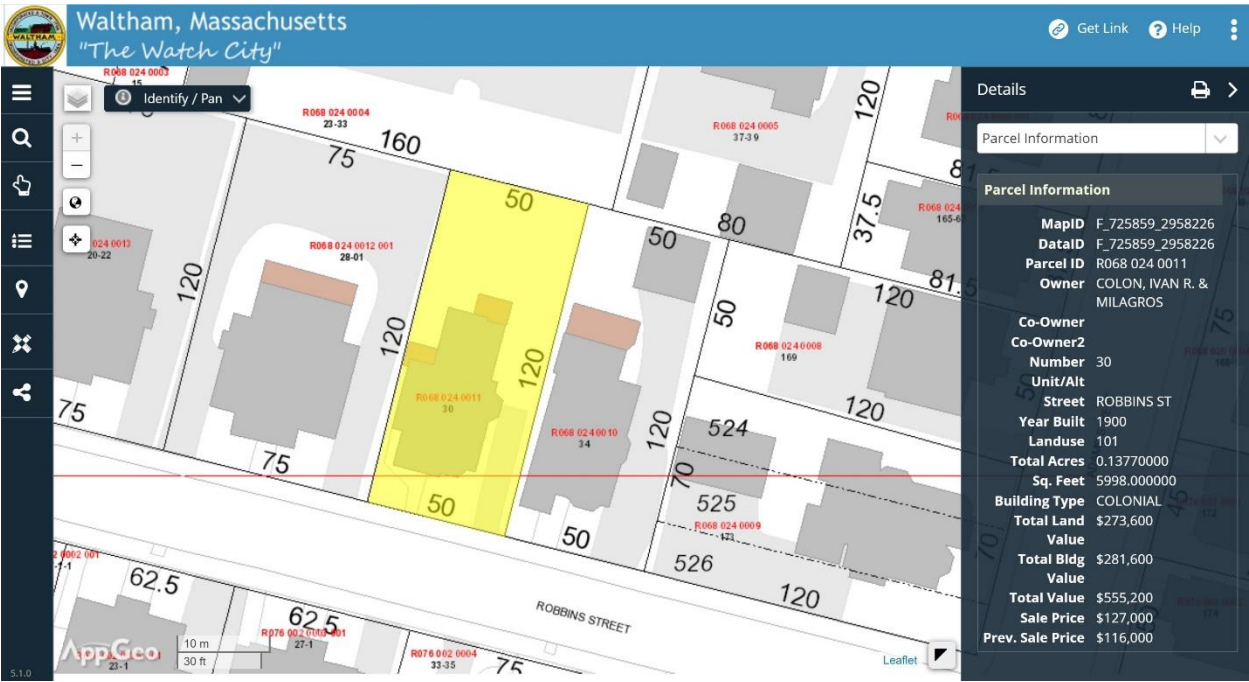
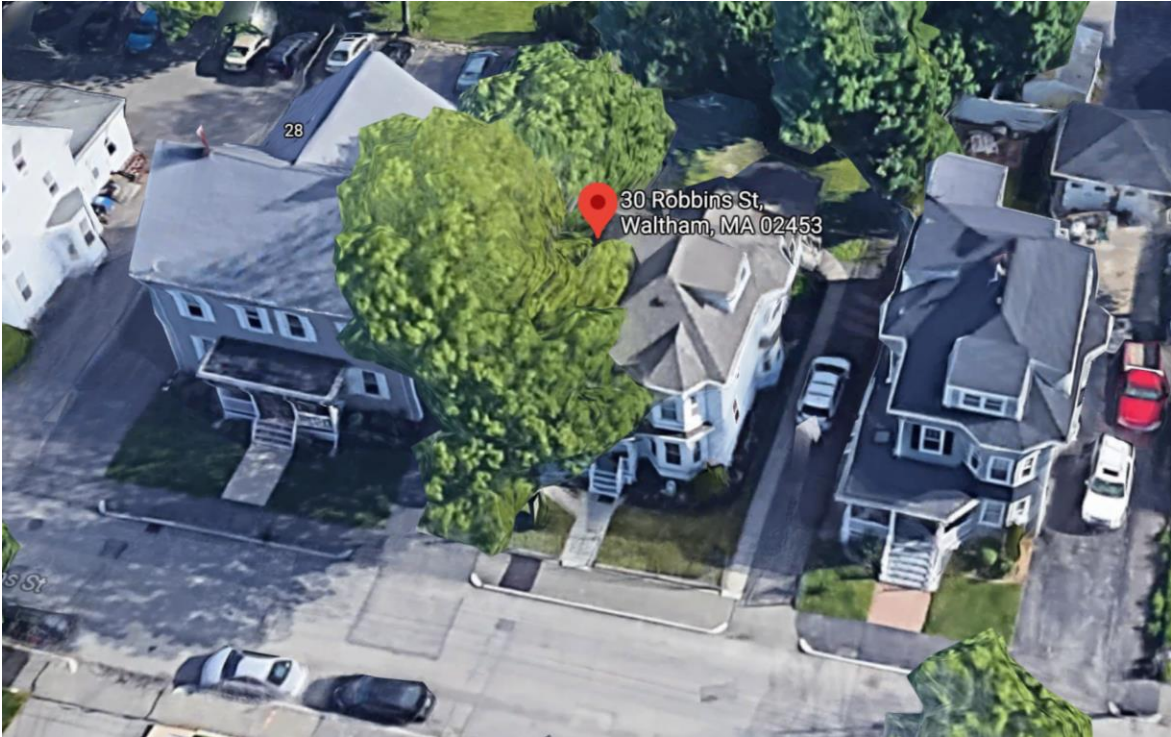


30 Robbins Street



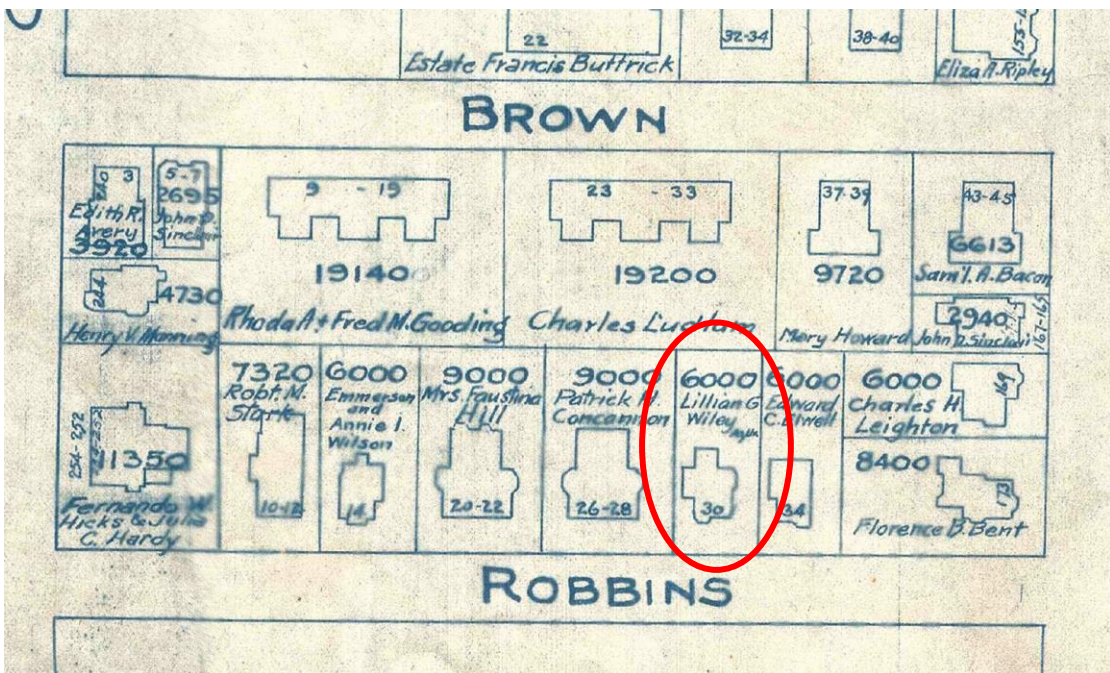
Waltham GIS



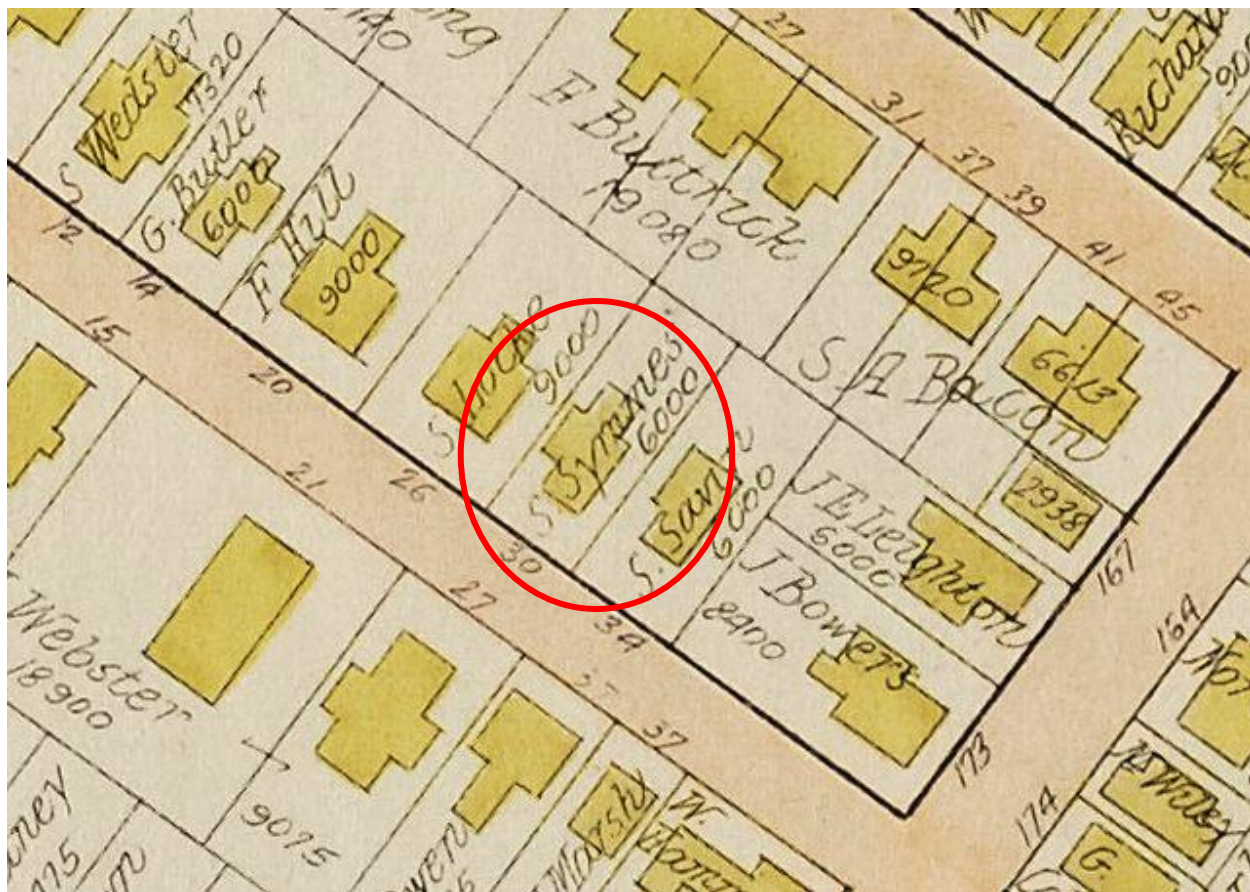
Google satellite



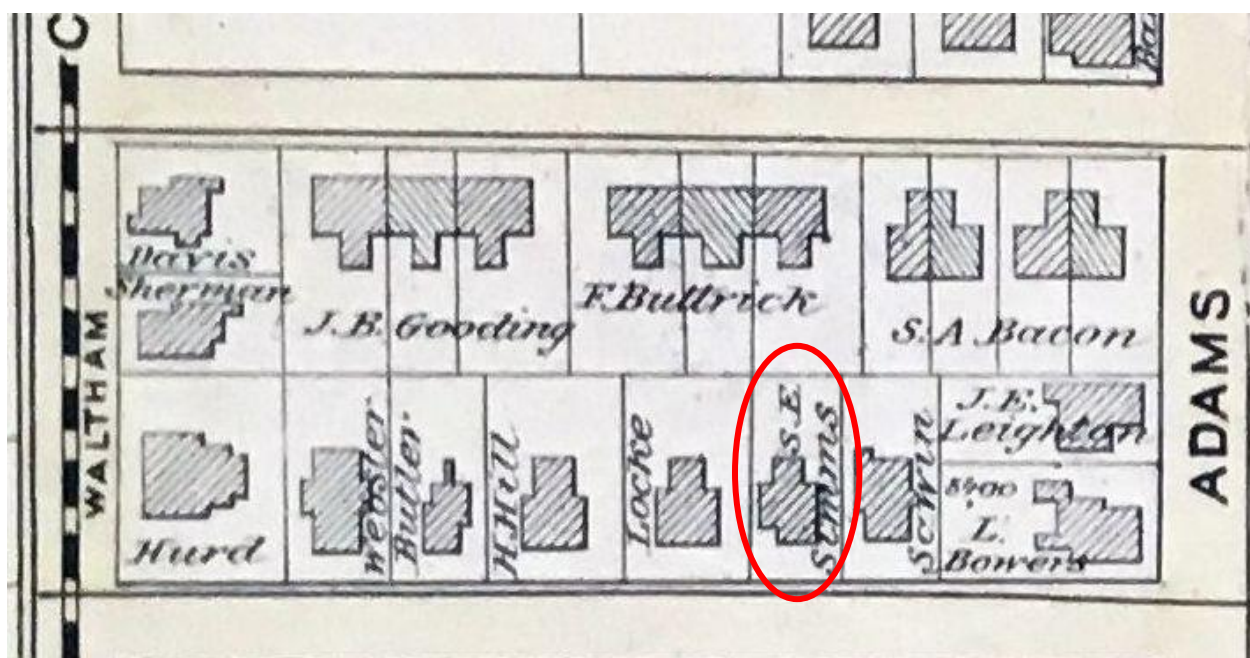
Google street view 2019



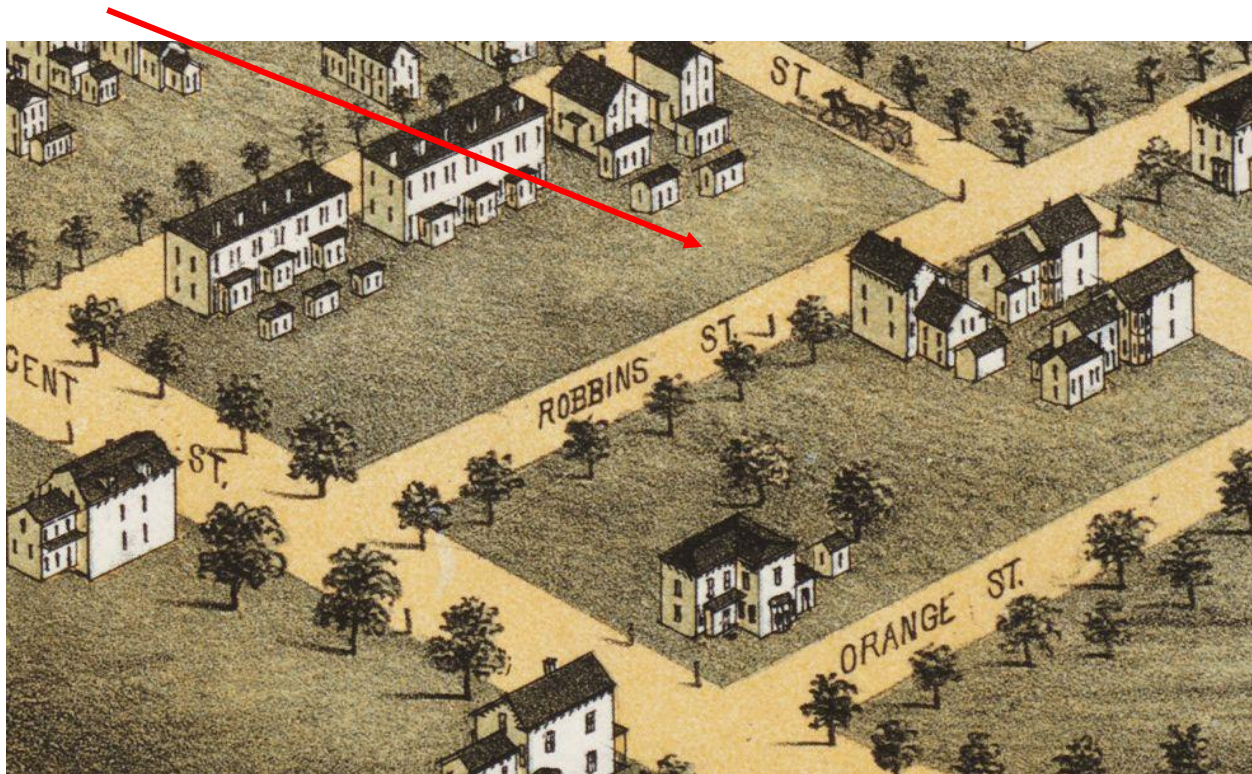
1918 map



1900 map



1886 map



1877 panorama

Timeline

- 1876 Deed, Am. Watch Co. to Sarah E. Symmes [MLR 1411/102] Lots 529 & 530
- 1882 Directory, Thomas Symmes, Am. W. W. Co., house Robbins n. Adams
- 1884 Directory, Thomas Symmes, Am. W. W. Co., house Robbins n. Adams
- 1888 Directory, Thomas Symmes, watchman, Am. W. W. Co., house 30 Robbins
- 1888 Death, Thomas Symmes
- 1910 Census, Sarah Symmes; Charles Sawin, machinist, watch factory
- 1912 Directory, Sarah Symmes, widow of Thomas, 30 Robbins
- 1915 Deed, Sarah Symmes to Lillian Wiley [MLR 4002/129]
- 1918 Death, Sarah Symmes, in Oregon
- 1920 Census, George & Lillian Wiley, die maker, watch factory
- 1930 Census, George & Lillian Wiley, watchmaker, watch factory
- 1940 Census, George & Lillian Wiley, machinist, machine company
- 1947 Death, Lillian (Hamlin) Wiley
- 1948 Deed, George A. Wiley to Henry V. Manning [MLR 7325/353]
- 1948 Death, George Wiley
- 1949 Deed, Henry V. Manning to George & Eleanor MacDougal [MLR 7458/516]
- 1958 Directory, George F. (Eleanor) MacDougal, inspector, Waltham Precision Instrument Co., h. 30 Robbins
- 1962 Directory, George F. (Eleanor) MacDougal, 30 Robbins
- 1977 Deed, George F. McDougal et al to James & Lynn Canning [MLR 13252/153]
- 1978 Deed, James & Lynn Canning to Frederick & Lena Strom [MLR 13580/563]
- 1980 Deed, Frederick & Lena Strom to Paul T. Burke & Leslie Ripley [MLR 13997/26]
- 1982 Deed, Paul T. Burke & Leslie Ripley to Daniel & Anne McAuliffe [MLR 14802/367]
- 1988 Deed, Daniel & Anne McAuliffe to Daniel J. McAuliffe [MLR 19139/264]

- 1991 Foreclosure deed, Daniel J. McAuliffe & The Federal Savings Bank to Main Street Building Corp.
[MLR 21016/168]
- 1993 Deed, Main Street Building Corp. to Ivan & Milagros Colon [MLR 323710/343]

Summary

The tract of land at 30 Robbins Street was sold by the American Waltham Watch Company to Sarah Symmes in 1876. However, the first time the Symmes are listed at the address was in 1882. The house is not shown on the 1877 panorama, and the Symmes are listed elsewhere in 1880. So the house was likely built between 1880 and 1882. The inhabitants of the house were employees of the Waltham Watch Company, and tool companies.