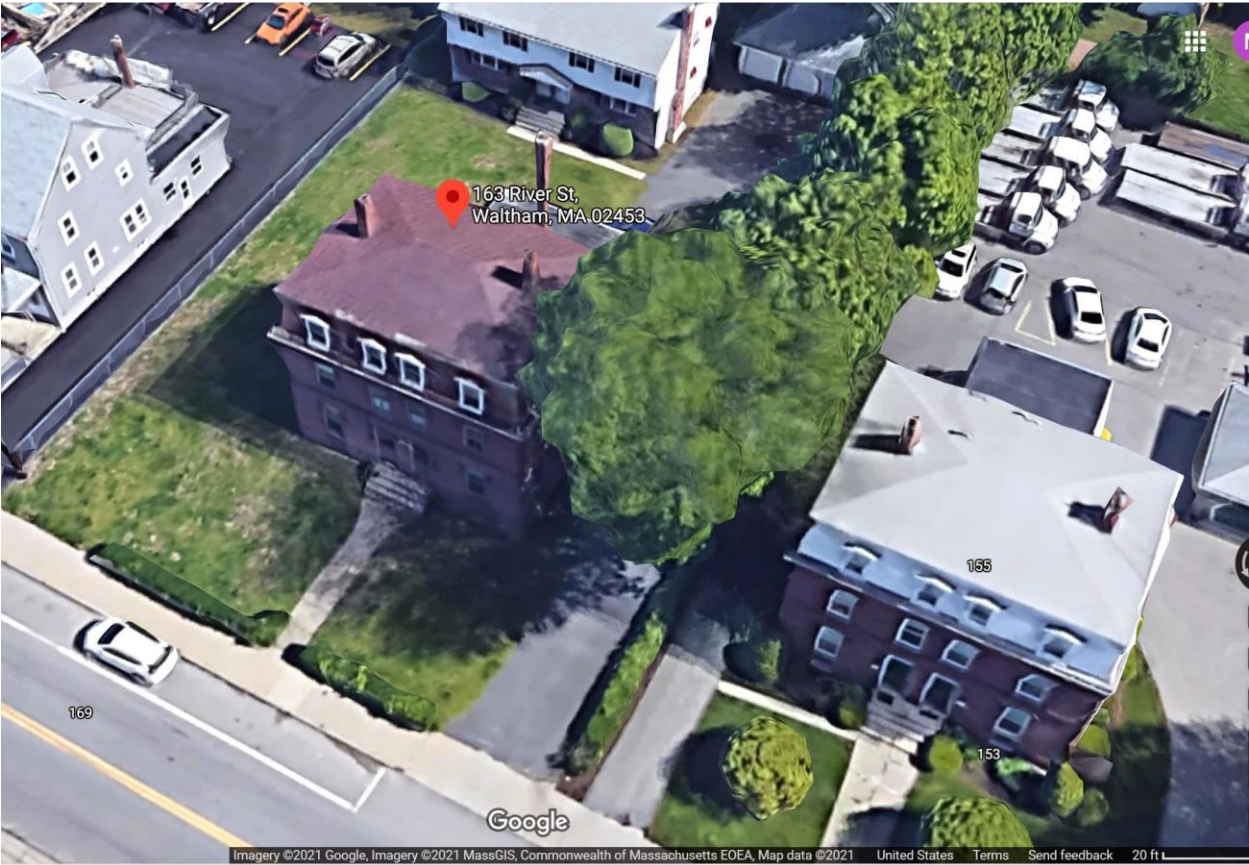
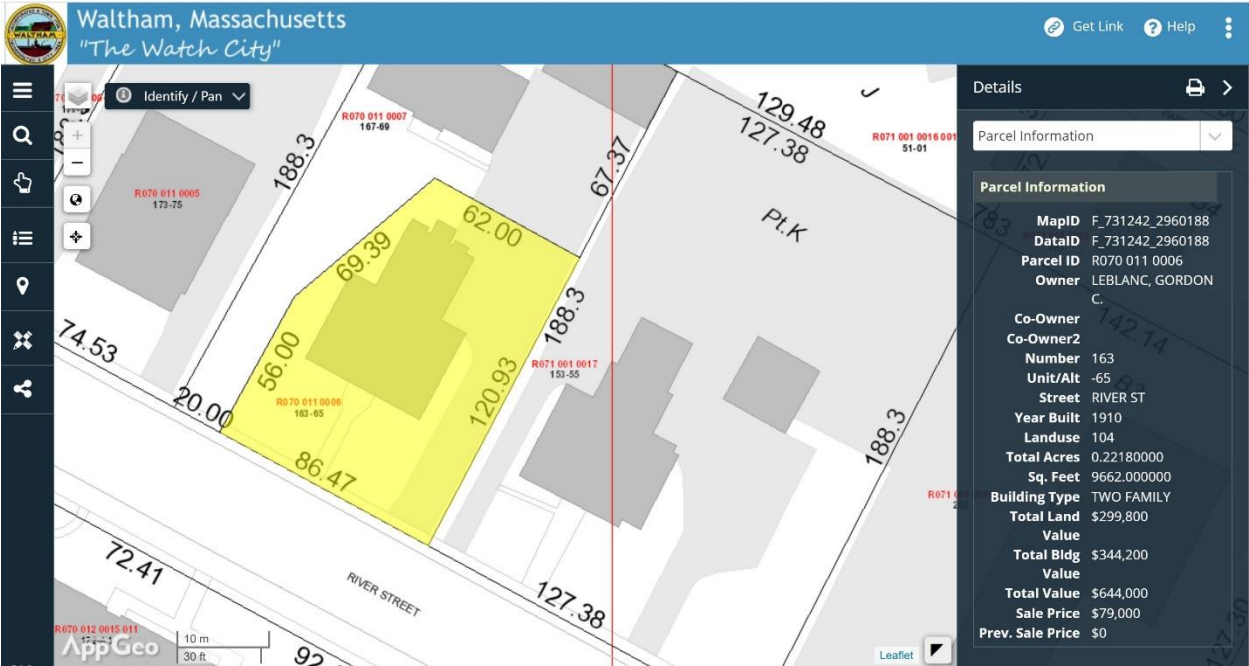


# 163-165 River Street



Google satellite



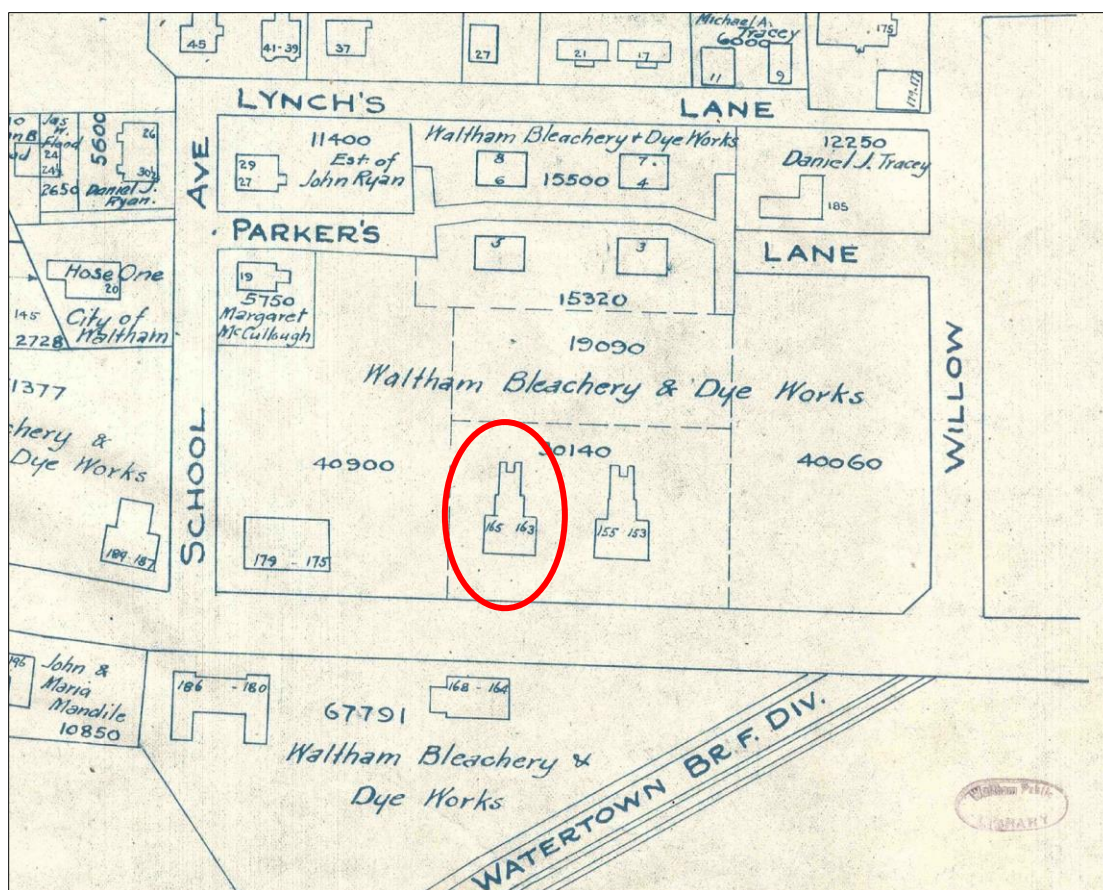


Google street view

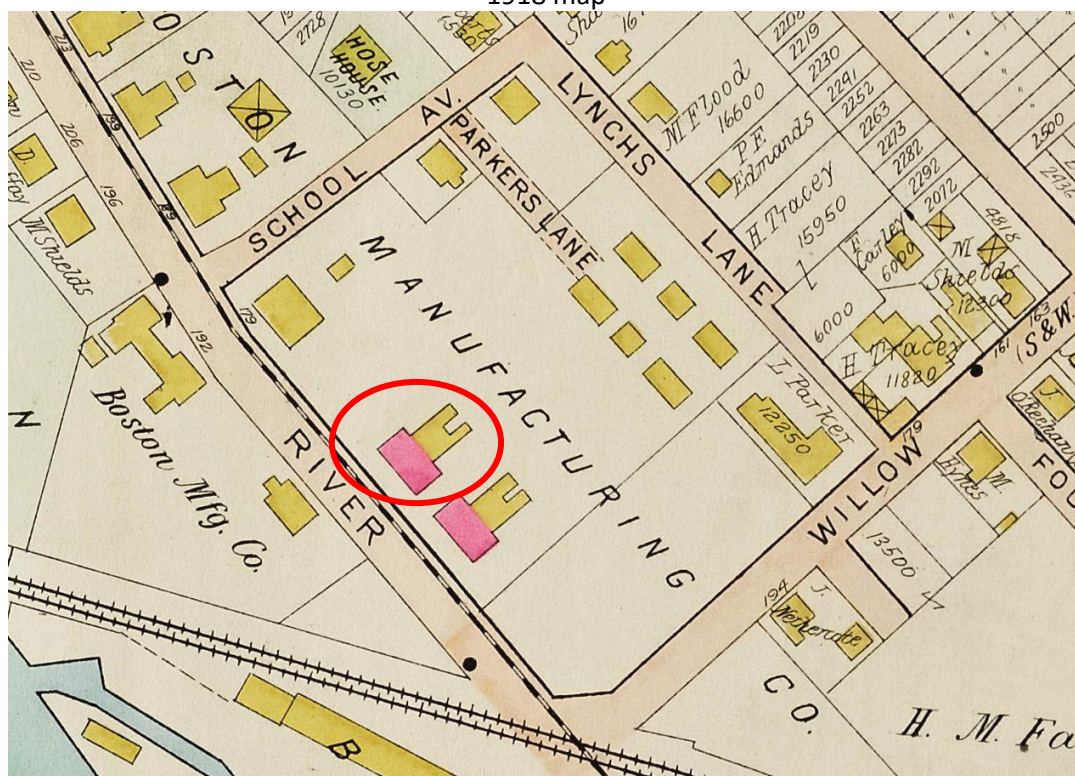


Google street view adjacent house



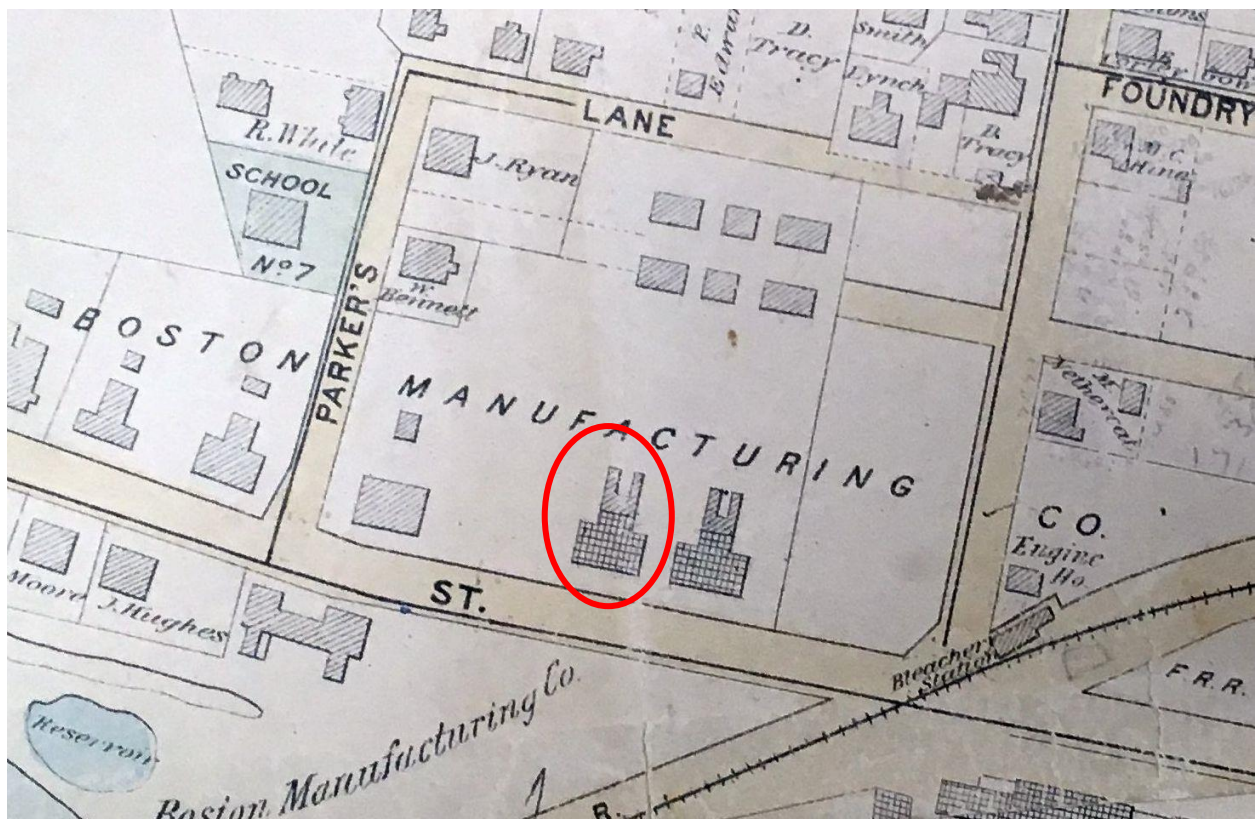


1918 map



1900 map



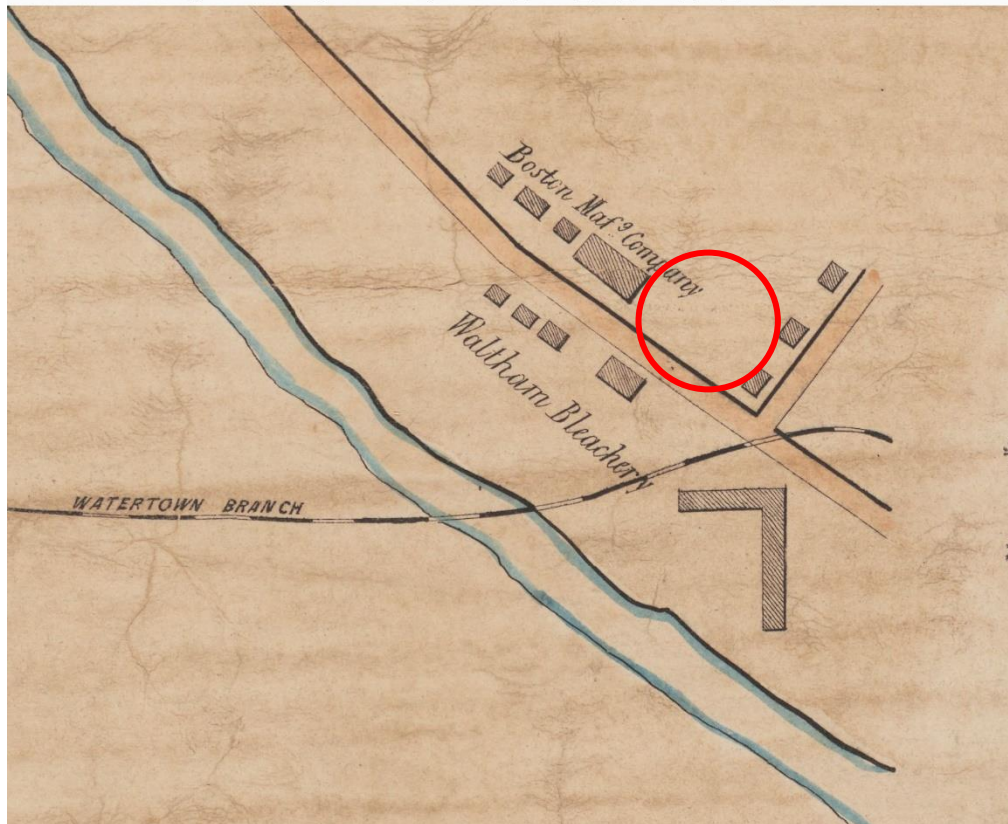


1886 map



1875 map





1854 Woodford map



1852 map

## Timeline

- 1870 MACRIS, built by owner, Boston Manufacturing Co.
- 1877 Directory, Spencer Smith, overseer of bleachery, house River. n. Willow
- 1880 Census, Charles E. Bean, Boss of bleachery yard
- 1884 Directory, Charles E. Bean, overseer, yard at Bleachery, house River, near Willow
- 1886 Directory, Samuel B. Eaton, dyer, boards at Charles Bean's, River near Willow
- 1888 Directory, Charles E. Bean, at W. B. & D. Works, house 163 River
- 1888 Directory, Samuel B. Eaton, dyer, W. B. & D. Works, house 163 River
- 1888 Directory, John Edmunds, machinist, W. B. & D. Works, house 165 River
- 1891 Newspaper, John Edmunds, delegate Democratic caucus
- 1894 Annual listing, 163 – Owen Kirk, laborer; 165 – John Edmunds, overseer
- 1895 Directory, John Edmunds, master mechanic, W. D. & B. Works, 165 River
- 1895 Newspaper, John Edmunds, candidate for alderman, Ward 3
- 1900 Annual listing, 163 – Owen Kirk, bleachery emp. 165 – John Edmunds, bleachery emp.
- 1902 Patent, John Edmunds, apparatus for manufacturing sulphurous acid
- 1910 Census, 163 - Julian Demers, carpenter, dye works; 165 – Thomas McCullough, folder, dye works, George Silman, son-in-law of Thomas McCullough
- 1910 Annual listing, 163 – Hugh Donnelly, bleachery emp; 165 – Thomas McCullough, bleachery emp.
- 1912 Directory, George Silman, WW Co., 165 River St.
- 1918 WWI draft registration, George Silman, dealer farm products & groceries, 165 River
- 1920 Annual listing, 163 - Julien Demers, carpenter, Joseph Robichaud, clerk; 165 – Thomas McCullough, bleacher, George Silman, salesman
- 1924 Deed, Waltham Bleachery & Dye Works to Paul L. Flynn [4793/382]
- 1924 Deed, Paul L. Flynn to Susie Silman [MLR 4795/167]
- 1930 Census, 163 – John McCullough, gateman, bleachery; 165 – George H. Silman, clerk, grocery store
- 1937 Death, George Silman, residence, 165 River St.
- 1940 Census, 163 – Theodore Von Hagen; 165 – Susan Silman
- 1957 Directory, Susie G. Silman, widow of George H., 165 River St.
- 1962 Directory, 163 – Catherine W. Brennan; 165 – Mrs. Susie Silman
- 1968 Death, Susie G. (McCullough) Silman
- 1971 Deed, Wyman R. Rice, executor of estate of Sue Silman to David & Carol (Zanco) Atkinson [MLR 12126/329]
- 1977 Deed, David & Carol (Zanco) Atkinson to Anthony Zanco [MLR 13186/313]
- 1978 Deed, Anthony Zanco to Gordon C. Leblanc [MLR 13401/523]
- 1990 Directory, Center for Mental Health (group home)
- 2019 Death, Gordon C. Leblanc

## Summary

Wikipedia entry: "These two buildings are located on the north side of River Street, between School Avenue and Willow Street a short way east of Waltham center. Both are 2-1/2 story brick buildings with mansard roofs providing a full third floor. They have symmetrical four-bay facades, with a pair of entrances in the center bays. Doors and windows are set in segmented-arch openings with brickwork hoods. The building at 163-165 retains the original slate of its mansard roof. These two buildings were built by the company about 1870, probably for upper-level employees, and are a contrast to wood-frame worker housing (now heavily altered) that stand behind them."

The duplex house at 163-165 River Street is listed on the national and state registers of historic places. The building was built and owned by the Boston Manufacturing Company probably around 1870, as reported in the Massachusetts Cultural Resources Inventory report. However, the National Register report erroneously states that the land was purchased from Isaac Parker in 1873. The deed the report cites was for an adjacent parcel. In fact, the land along River Street had been owned by the BMC from before 1832, when Isaac Parker purchased his property from the BMC. The BMC ownership may go back to 1820, when the bleachery was founded. Although there were earlier BMC buildings along River Street, the land for the two houses at 153-55 and 163-65 River Street was vacant until ca. 1870.

Associated with the Boston Manufacturing Company, the bleachery operated across River Street from 1820 to 1951. The Boston Manufacturing Company and the Waltham Bleachery and Dye Works rented the house at 163-165 River Street, and the matching house next door, to its foremen and employees from 1871 to 1924, when it sold off its property. Two men who worked in the bleachery, Spencer Smith and George L. Wright, are listed in the 1871 directory as living on River Street near Willow Street. But it is impossible to determine which house they lived in, since street numbers were not recorded in that year. Spencer Smith was an overseer (foreman) of the bleachery. The tenants in the 1880s and 1890s, were Charles E. Bean, the overseer of the bleachery yard, and John Edmunds, a master mechanic who held a patent for an apparatus used in the bleachery. Edmunds was also involved in Ward 3 politics. In 1910, Thomas McCullough lived at 165 River Street, and his daughter, Susie, married George Silman. In 1924, the Waltham Bleachery and Dye Works sold the property and house to Paul L. Flynn, a Waltham lawyer, who did not live in the house. Flynn then sold the house and land to Susie (McCullough) Silman, who had been living in the house since before 1910. After the death of her husband, George H. Silman, in 1937, Susie Silman continued to live in the house until her death in 1968. In 1971, the executor of her estate sold the property to David and Carol Atkinson. Carol Atkinson was the daughter of Anthony Zanco. Bartolo and Josephine Zanco owned the similar house next door. The Atkinsons sold the property to Anthony Zanco, who then sold it to Gordon C. Leblanc. Gordon Leblanc did not live at the address, and in 1990, both sides of the house were rented to a group home, Center for Mental Health.