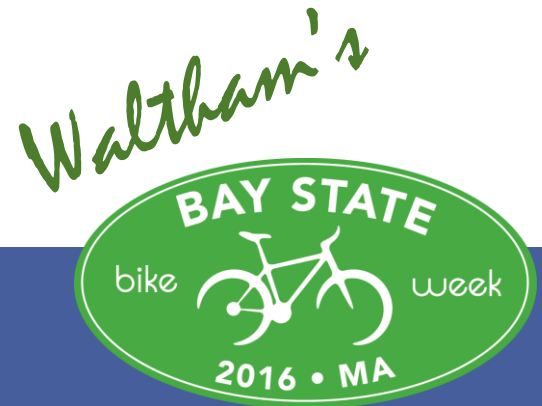




Bicyclist on Lexington Street morning rush hour.

3rd Annual Waltham Bicycle Update



May 18, 2016 6-7pm

**Government Center Auditorium
City of Waltham Planning Department**

Agenda 6:00 - 7:00pm



School Street Bicyclist riding on sidewalk during the evening commute

- **Welcome & Happy Waltham Bay State Bike Week!**
- **MA Bicycle Framework**
- **Bicycle-Friendly Waltham**
- **2015 Updates to Waltham's Baseline**
- **Waltham Goals 2016**
- **Q&A**

Bicycle-Friendly Waltham



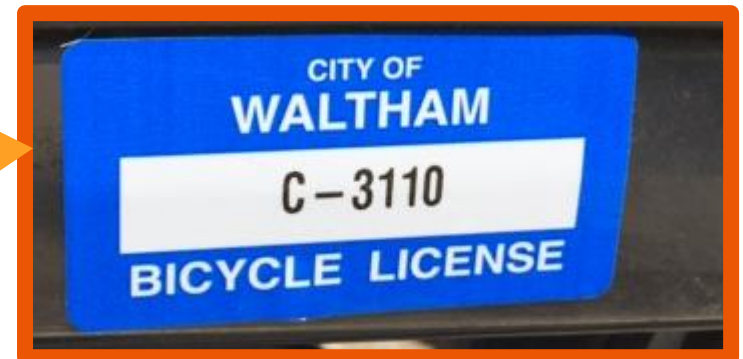
Secure indoor bike rooms with repair areas and bike share are essential amenities at many of the new rentals such as Currents on the Charles.

- Great Location, Scale, Existing Land Uses
- Economically Vibrant Downtown & 128/95 Innovation Center
- (2) Commuter Rail Stations with Local /Express Bus Routes
- (2) Major Universities
- *Transportation Master Plan - in Process*
- Local Bicycle Culture/Resources
 - Frank's Spoke N Wheel
 - Watch City Bike Lab
 - Waltham Bicycle Committee
 - Waltham Police Bicycle Registry

Bicycle-Friendly Waltham



- Have you registered your bike(s) yet?
- FREE & EASY Bicycle Registration Offered by Waltham Police Department
- Less than 5 Minutes to Complete Form & Pickup Stickers at Station on Lexington Street
- Helps the Police Locate Your Bike, if it is Stolen





Trio of bicyclists waiting for green light at Totten Pond & Wyman Street during afternoon commute.

A photograph showing a multi-modal transit scene. In the background, a commuter train with a white upper half and a purple lower half is moving. A cyclist wearing a blue shirt, tan shorts, a black helmet, and sunglasses is riding a green bicycle on a paved path in the foreground. A black metal fence separates the cyclist from the train tracks. The scene is set in an urban area with brick buildings and trees in the background.

*Strong multi-modal
connectivity between
transit and bicycling
exists in Waltham.*

*Seek to further enhance
connectivity to reduce
vehicular congestion &
increase quality of life.*

*Bicyclist leaving
workplace to
access Charles
River Reservation
multi-use path.*










Review of Outcomes from 2014 Bicycle Transportation Goals

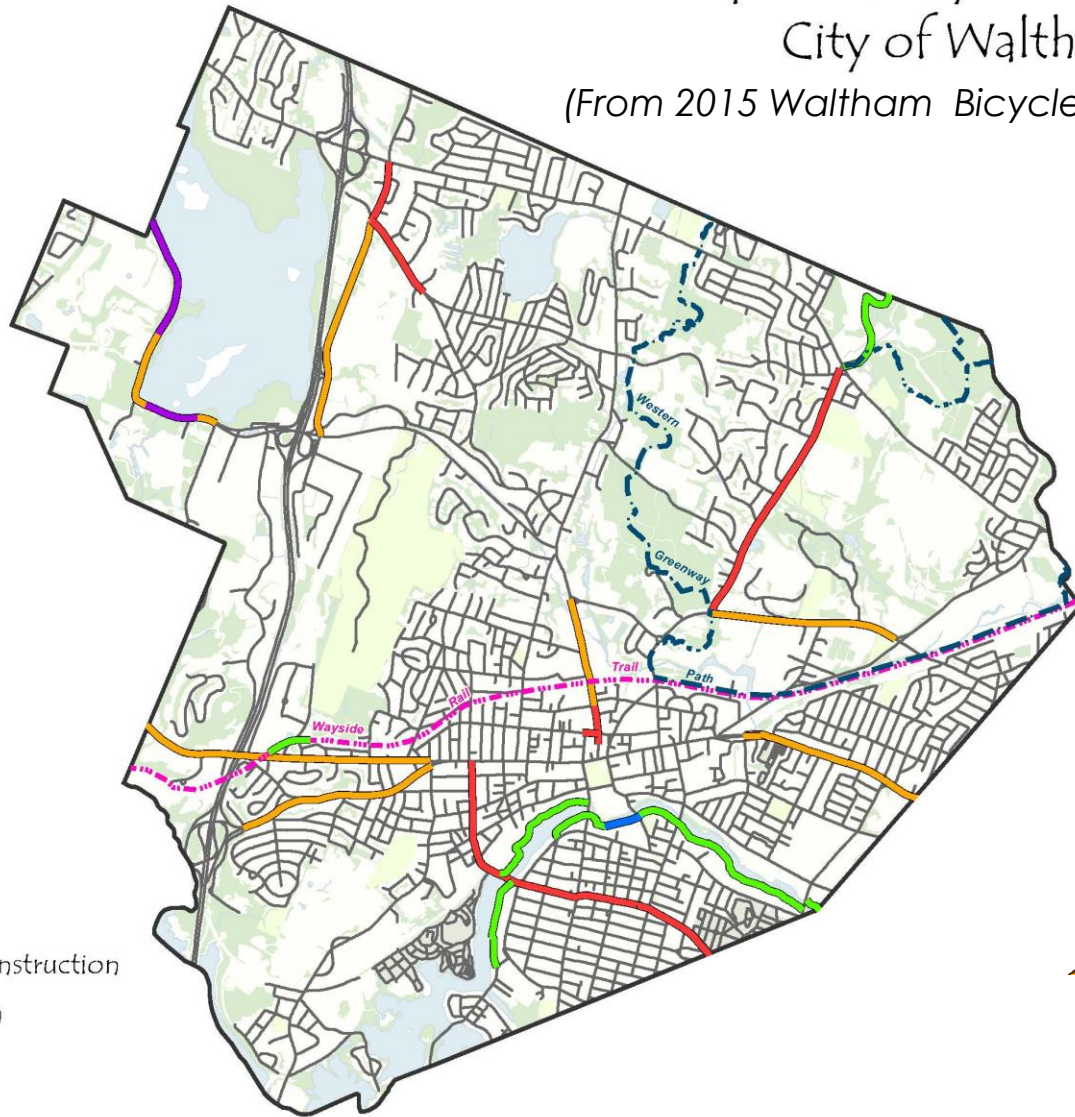
- ✓  Install 1st **Bicycle Lanes (Winter Street)** in Waltham
- ✓  Increase On-Road Facilities by **New 3 Miles (Exceeded Goal Actual 4.78 Miles)**
- ✓  Work with Police + Traffic Engineering to Use Crash Data to Reduce Number of Bicycle Crashes **Helmet Data 2015/Bicycle Registration**
- ✓  Bridge Data Gap on Helmut Usage **Modified Crash Form**
- ✓  Establish Strategy for Funding, Designing and Building Wayside Rail Trail **Presented Wayside to City Council April, Hosted MassDOT/DCR Forum November, Meeting with MassDOT & DCR Currently on Design & Next Steps**
- ✓  Apply for Bicycle Friendly Community Designation **Applied & Seeking to Implement Recommendations for Resubmission**

****BONUS** WALTHAM TRAFFIC COMMISSION ADOPTS 9/18/14
COMPLETE STREET POLICY**

Updated Bicycle Facilities City of Waltham (From 2015 Waltham Bicycle Update)

Bicycle Facilities

-  Bicycle Lanes
-  Proposed for 2015
-  DCR Riverwalk Under Construction
-  Shared Use Off Road Path
-  Sharrows/Signage
-  Wayside Rail Trail
-  Western Greenway Path



Totten Pond is the City's only 45 mph road.

**It serves as a connection for bicyclists traveling to
Waltham's 128/95 Innovation Center & beyond.**





Bicycles are great for local business, including Waltham's Farmer Market. Businesses recognize bicycles and pedestrians to increase their bottom line.

2015 Update & 2016 Forecast

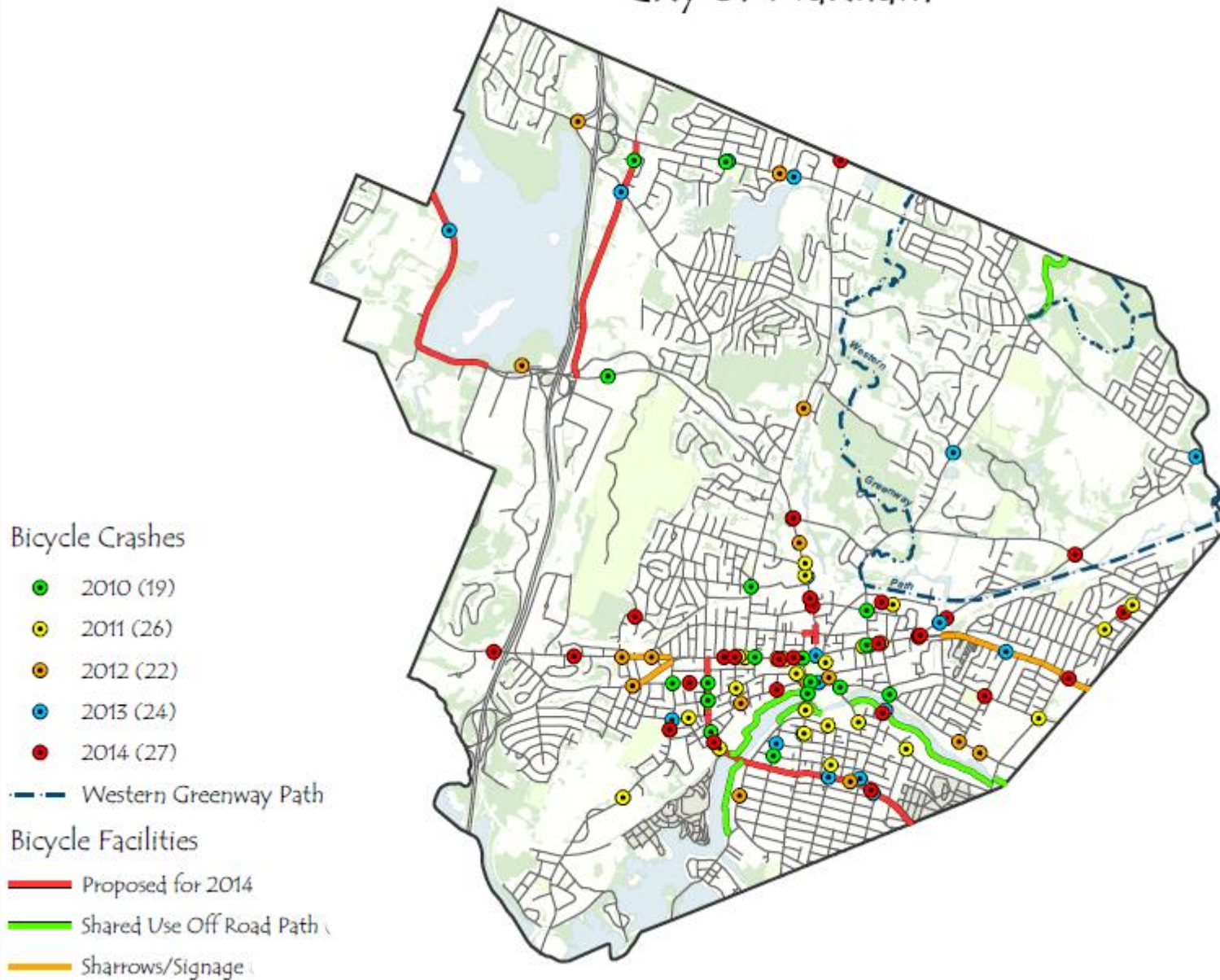


Bicyclist commuting to work on School Street

- ▣ 2010 – 2014 Baseline Crash Data/Facilities
- ▣ 2015 Bicycle Crash Data Locations/Charts
- ▣ Data Trends & Takeaways
- ▣ 2016 Forecasts

Bicycle Crash Locations 2010 - 2014

City of Waltham



Bicycle Crash Locations 2015

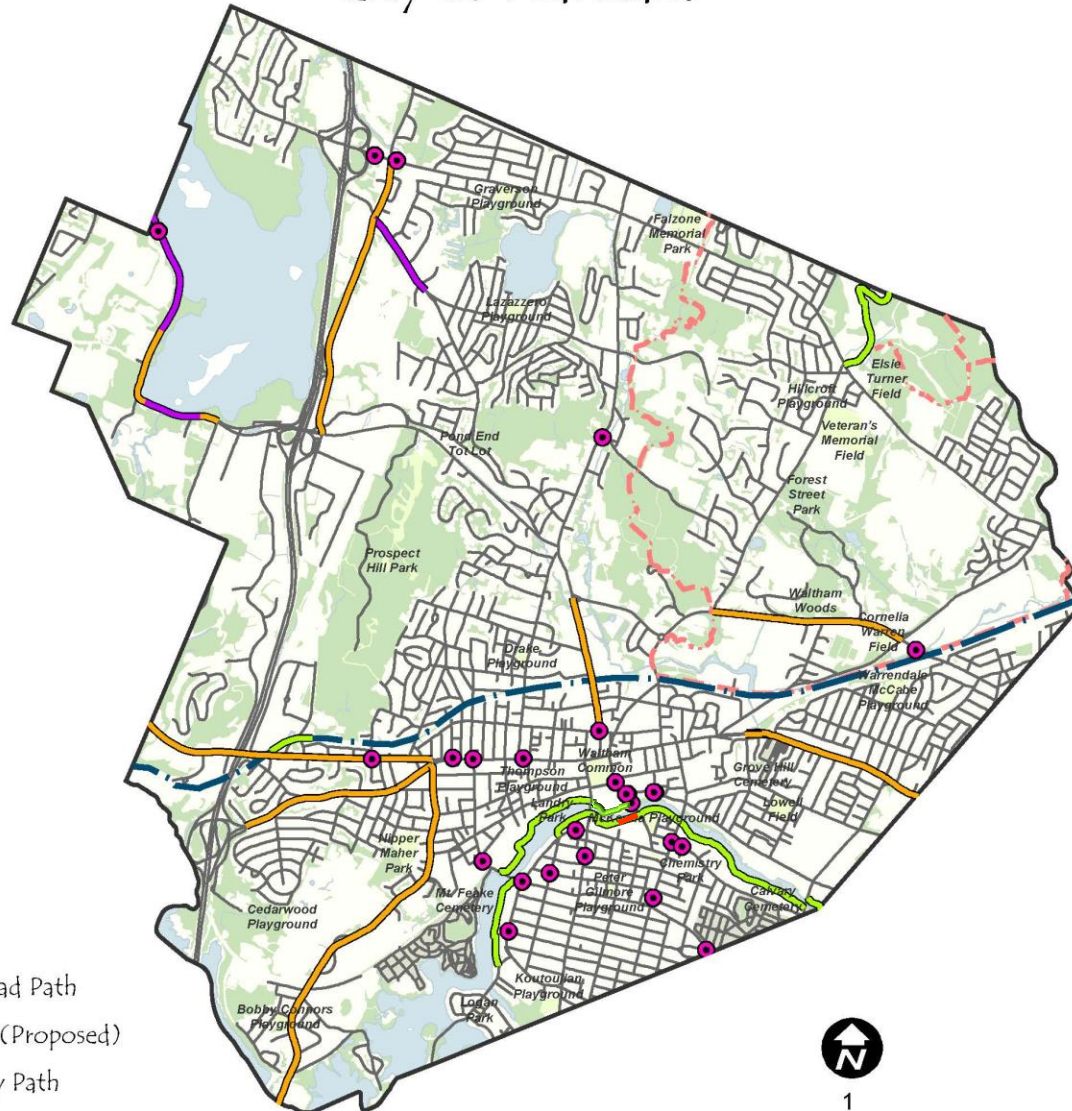
City of Waltham

Bicycle Crashes

● 2015 (27)

Bicycle Facilities

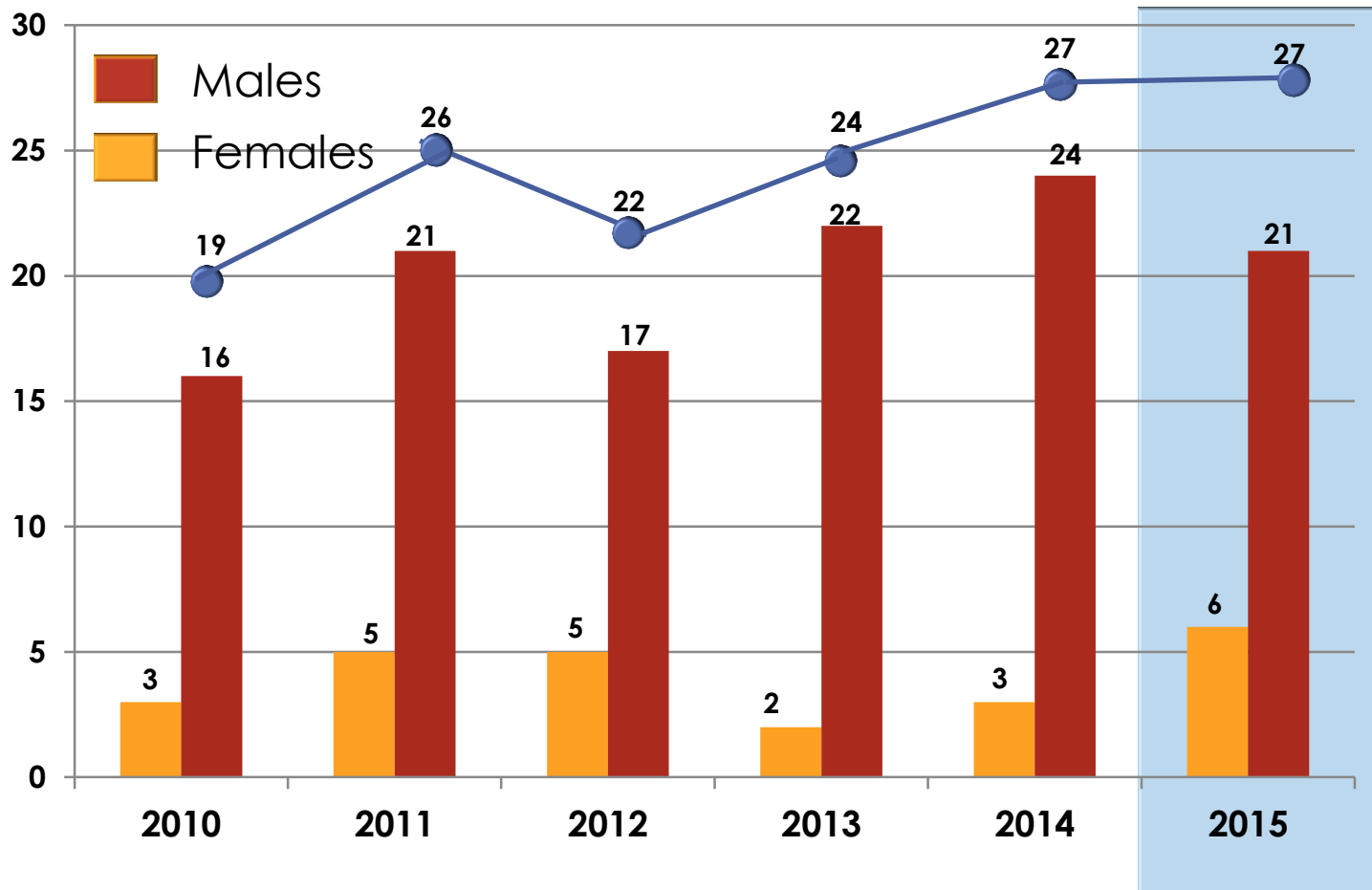
- Bicycle Lanes
- Sharrows/Signage
- Shared Use Off Road Path
- — — — — Wayside Rail Trail (Proposed)
- — — — — Western Greenway Path



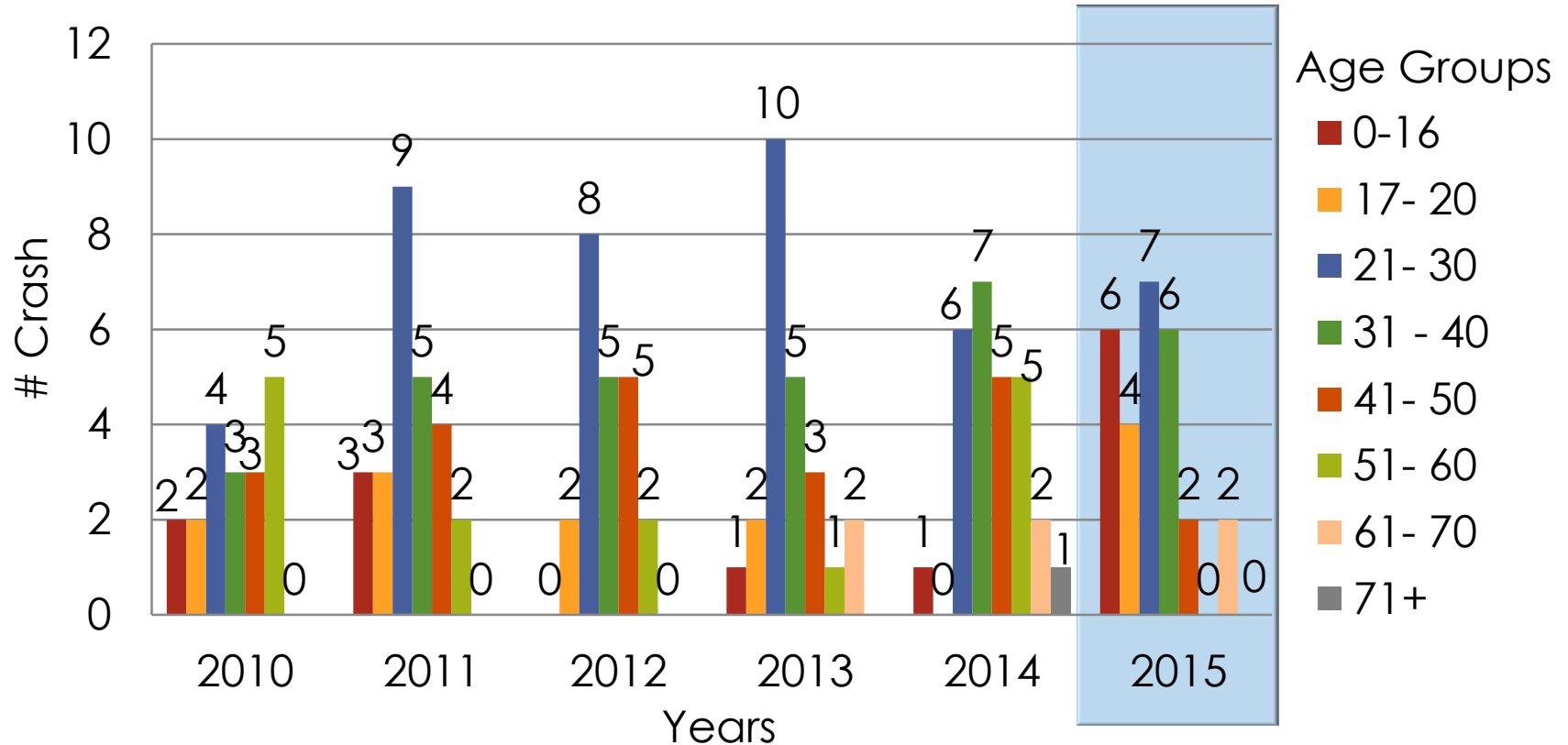
1

1 Miles

Crash Data by Year & Gender

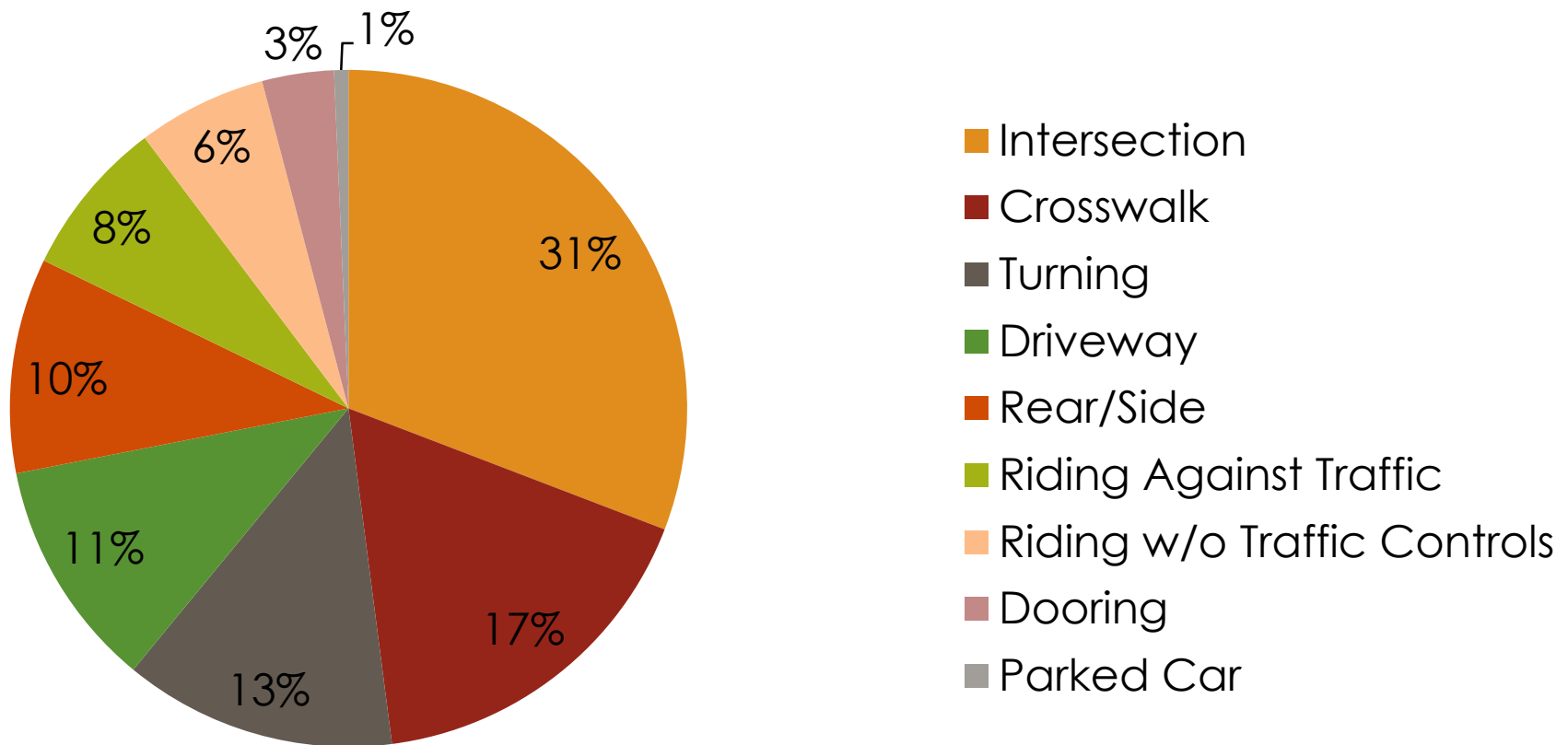


Crash Data by Year & Age



Bicycle Crashes Reported to Waltham Police

Crash Type





Reported 'Intersection' Crashes

- In 2015 (7) Bicyclist/Car Crashes at Intersections with Traffic Controls
- (2) Citations issued to Vehicular Operator for Failure to use Care in Turning (A7 22)
- 2010 – 2015 Crash Data: 31% of Bicycle/Car Crashes occur at Intersections with Traffic Controls

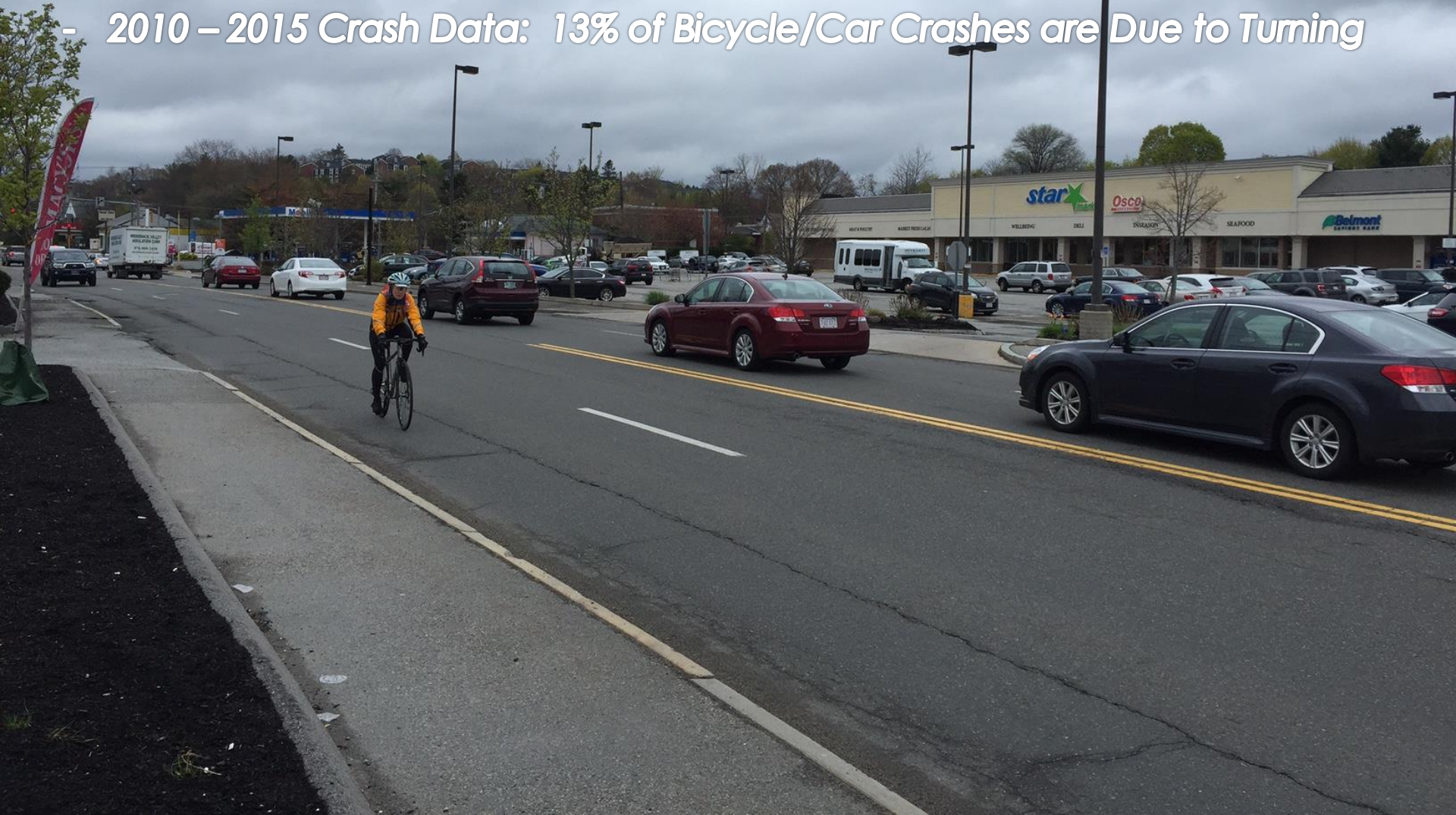


Reported 'Crosswalks' Crashes

- In 2015 (4) Minors Hit in Crosswalks, (3) Transported to Hospital, (1) Wearing a Helmet.
- In 2015 (5) Adults Hit in Crosswalks, (3) Transported to Hospital, No Helmets Worn.
- (3) Citations Issued to Vehicular Operators for Failure to Yield in Crosswalk (2) & No license (1).
- 2010 – 2015 Crash Data: 17% of Bicycle/Car Crashes Occur in Crosswalks

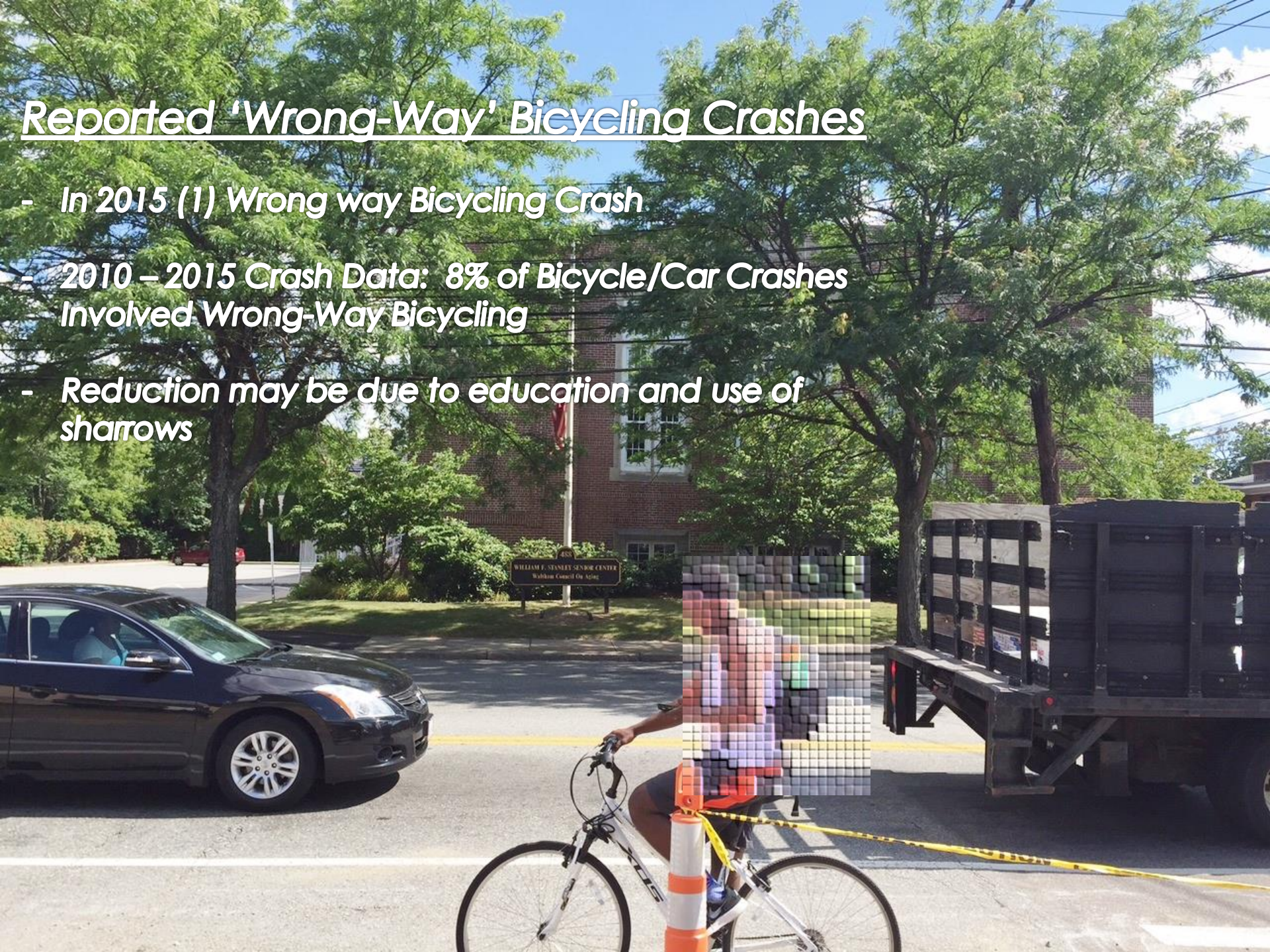
Reported 'Turning' Crashes

- In 2015 (1) Bicyclist/Car Crashes Due to Turning
- 2010 – 2015 Crash Data: 13% of Bicycle/Car Crashes are Due to Turning



Reported 'Wrong-Way' Bicycling Crashes

- In 2015 (1) Wrong way Bicycling Crash
- 2010 – 2015 Crash Data: 8% of Bicycle/Car Crashes Involved Wrong-Way Bicycling
- Reduction may be due to education and use of sharrows



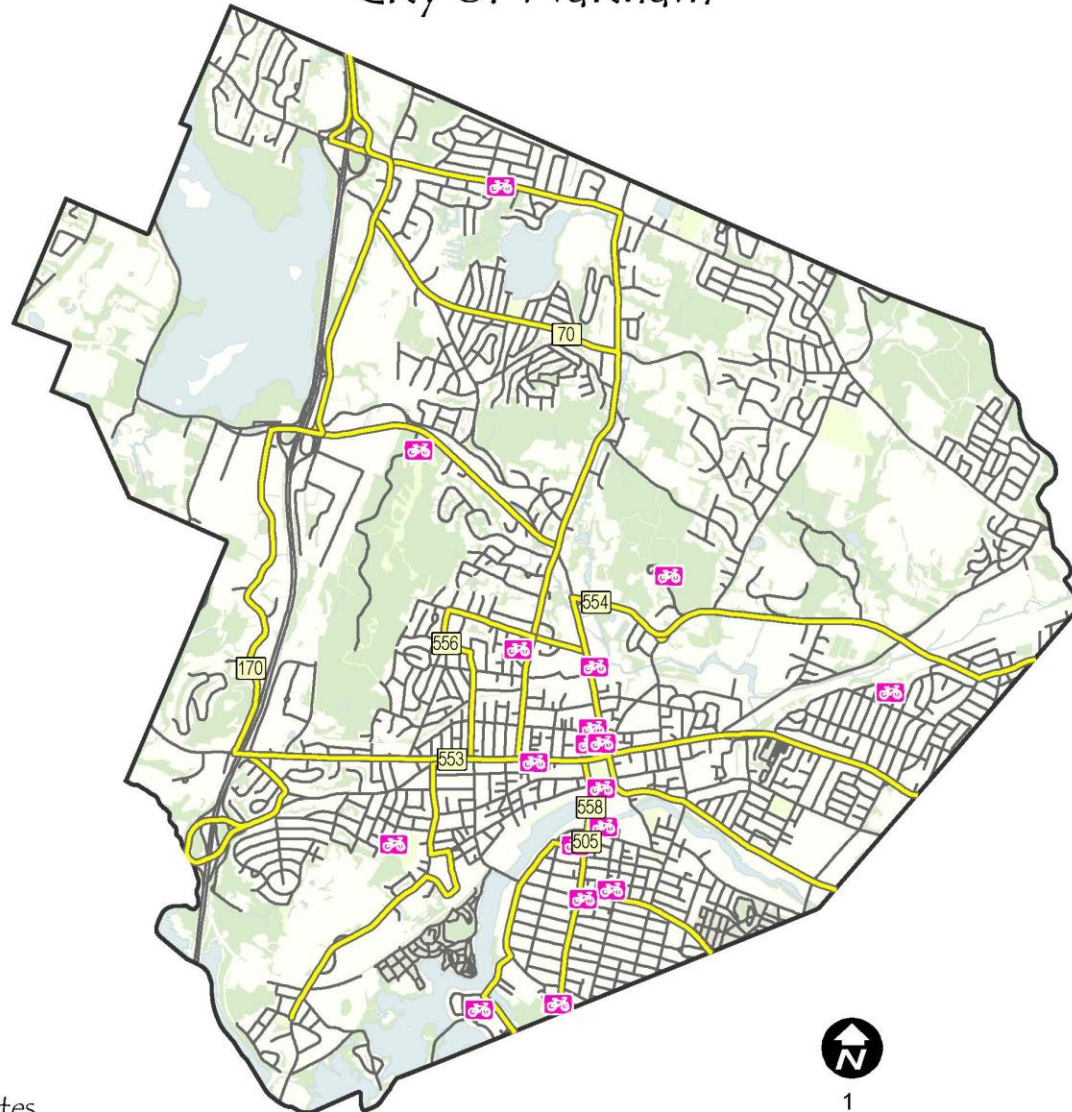
Takeaways & Data Trends



Bicyclist waiting for light at intersection of School/Lexington

- From 2010 – 2015 145 Reported Bicycle Crashes
- 74 of the 145 (51%) Bicyclists Requiring Transported to Hospital for Trauma
- 27 Reported Crashes in 2015
 - 6 Women/21 Men
 - 28 Years Old Average /Youngest 11 /Oldest 63
- 2015 1st Year of Helmet Data
 - 21 Adults Total
 - 10 Wearing Helmet with 2 Requiring Transport to Hospital for Trauma
 - 11 Not Wearing Helmets 6 Requiring Transport to Hospital for Trauma
 - 6 Minors
 - 1 Wearing Helmet with 1 Requiring Transport to Hospital for Trauma
 - 5 Not Wearing Helmets with 4 Requiring Transport to Hospital for Trauma

Bicycle Parking City of Waltham



Bicycle Facilities

-  Bicycle Parking
-  MBTA Bus Routes

***Most City of Waltham Buildings & Parks
have good parking for bicycles.***



***Additional parking options
needed in business areas to
encourage more bicycle
trips and avoid street tree
damage***



2014 Baseline Existing On-Road Bicycle Facilities

Type of Facility	Location	Year	Miles
Sharrows/Signage	Main Street (Palmer St./Lunda St.)	2012	.26
	Weston Street (South St./Eddy St.)	2012	.19
	Main Street(RR – Watertown)	2013	.66
	Wyman Street	2014	1.26
	Beaver Street	2014	.82
	Winter Street	2014	.57
	Main Street/117	2014	.4
Bicycle Lanes	Winter Street	2014	.9
			5.09Miles

2014 Baseline Existing Off-Road Bicycle Facilities

Type of Facility	Location	Year	Miles
Shared-Use Path	Waltham Charles River Path	Varied	2.27
	Metropolitan Parkway	Varied	1.19
			3.46 Miles

New Bicycle Facilities Added in 2015

Opportunity	Proposed Location	New Miles Installed
Maintenance	Prospect St.	.6 Sharrows/signage
Maintenance	Lincoln St/Wyman St	.7 Sharrows/signage
MassDOT	Rte. 20	.93 Sharrows/signage
Maintenance	Beaver St.	.82 Sharrows/signage
Maintenance	Main/117	.4 Sharrows/signage
Maintenance	South Street	1.4 Sharrows/signage
DCR Elm to Mill Connection	Charles River Reservation	.15 Multi-Use path
		5 Miles Created 2015

Total Mileage of Bicycle Facilities +2015 Facilities

- Bicycle Lanes: 0.9 miles
- Sharrows/signage: 8.04 miles
- Multi-use Facilities: 3.61 miles
- Total 12.55 miles



**Completed segment of Charles River
Reservation between Elm Street & Moody
Street. Now possible to ride on multi-use
facility from downtown Boston to downtown
Waltham.**

2015 Bicycle Transportation Outcomes

- ❑ Seek Funding for Design of Wayside Multi-Use Trail (MCRT) - *In process*
- ✓ ****Selected** by CTPS for Gap Analysis 10/16/15**
 - ❑ Increase On-Road Facilities by 3 Miles- **Exceeded goal- 5 miles added to Network**
- ✓ ****ADOPTED** 6/18/15 By Waltham Traffic Commission**
 - ❑ Adopt APBP Type Guidance for Bicycle Parking
 - ✓ ****ADOPTED** 6/18/15 By Waltham Traffic Commission**
 - ❑ Continue Inter-Departmental Collaborations Especially with Police + Traffic Engineering on Complete Street Safety
- ✓ ****ADOPTED** 6/18/15 By Waltham Traffic Commission**
 - ❑ Start Multi-Modal Transportation Plan – Data Collection & Public Process- **2nd Meeting May 17th /30 Day Comment Period**
- ✓ ****AWARDED** Honorable Mention 11/18/15**
 - ❑ Re-apply for Bicycle Friendly Community Designation
 - ❑ Encourage Local Businesses to Consider Applying for Bicycle Friendly Business Designation Process- **Awareness but no takers yet**
 - ❑ Encourage Brandeis University & Bentley University to Consider Applying for Bicycle Friendly University Designation Process- **Both Brandeis & Bentley may apply 2016**

May 2016 Proposed Bicycle Facilities

Opportunity	Location	New Miles Proposed
Maintenance	High Street	1
Maintenance	Trapelo Road	2
Maintenance	Lexington Street	1.8
Maintenance	Forest Street	1.22
		6.2 New Miles Proposed 2016

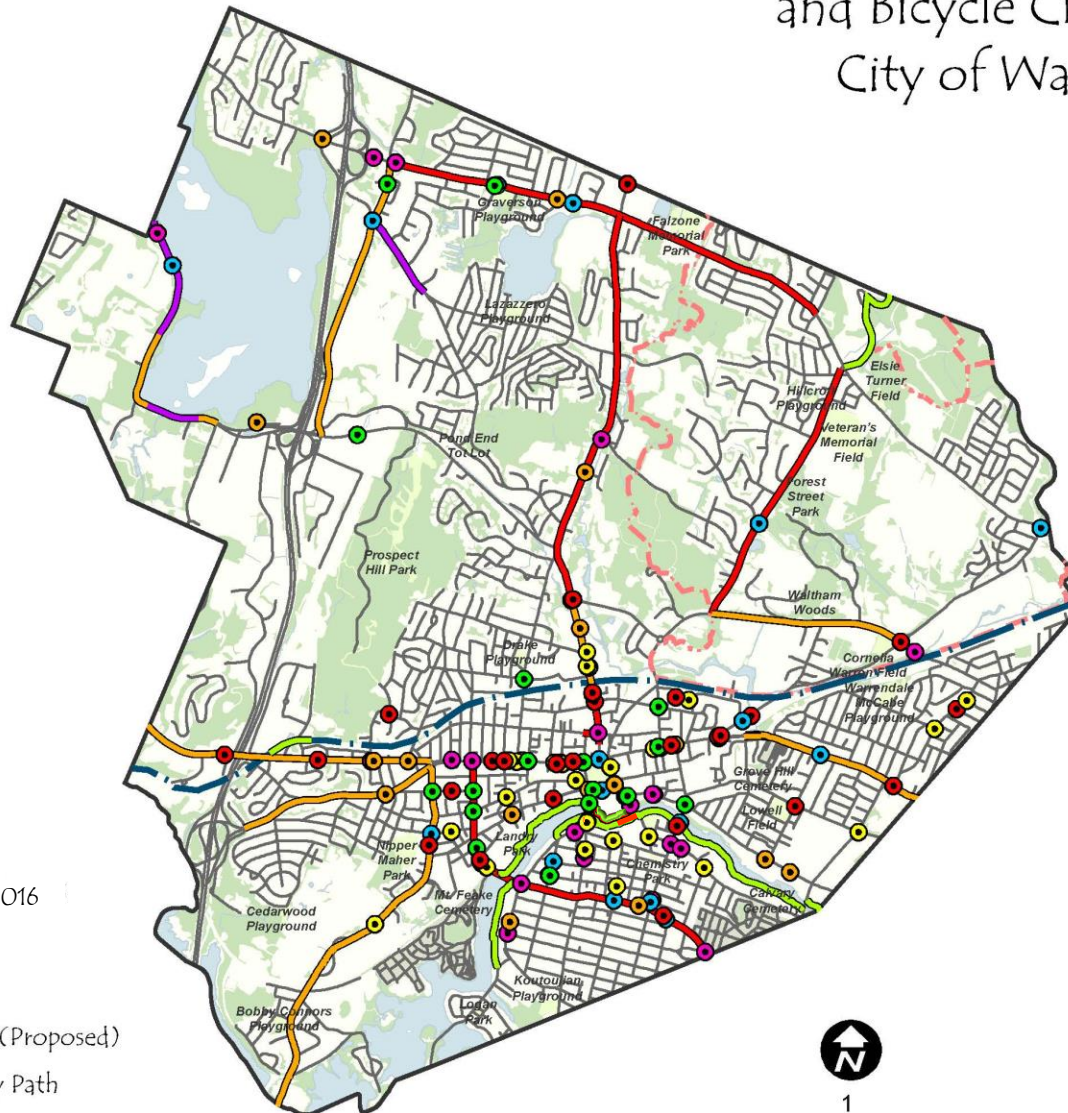
2010 - 2015 Bicycle Facilities and Bicycle Crash Data City of Waltham

Bicycle Crashes

- 2010 (19)
- 2011 (26)
- 2012 (22)
- 2013 (24)
- 2014 (27)
- 2015 (27)

Bicycle Facilities

- Bicycle Lanes
- Proposed Facility 2016
- Shared Use
- Sharrows/Signage
- Wayside Rail Trail (Proposed)
- Western Greenway Path



1

Miles



Afternoon commuter traveling on Lexington Street through intersection at School Street.



Bicyclist riding through residential neighborhood.



Bicyclist on Main Street in heavy vehicular traffic.

2016 Bicycle Transportation Goals

- Seek Funding for Design of Wayside Rail Multi-Use Path (Mass Central Rail Trail aka MCRT)
- Increase On-Road Facilities by at Least 3 Miles
- Continue Inter-Departmental & Police Collaborations on Complete Street Safety for All Roadway Users
- Complete Multi-Modal Transportation Plan
- Continue work with League of American Bicyclists for Bicycle Friendly Opportunities (Community, University & Business)
- Increase Education of Crash Prevention for All Roadway Users

Thank You!

Waltham's

